

# PRO PARK 9 PLUS

**TURN ONE PARKING SPOT  
INTO TWO!**

## VERSATILE AND PRODUCTIVE

- GOLD CERTIFIED
- COMMERCIAL GRADE
- PERFECT FOR HOME USE



### EXCLUSIVE LOCK LADDER SYSTEM

- Adjustable Leveling System enables level runways at all heights - even on uneven floors

### MULTIPLE LOCKING POSITIONS

- Allows for a comfortable working height. Store vehicles at a height that works in your floor to ceiling space.



### 20" WIDE RUNWAYS

- Accommodates wider vehicles



**84"**  
MAXIMUM RISE

**79 1/4"**  
CLEARANCE  
UNDER RUNWAY  
PLACEHOLDER



Model shown:  
**PP9PY11BKD**



### OPERATE THE LIFT FROM ONE COLUMN

- Mount power unit and single point lock release on the column that works best for your garage

## FEATURES

- Powered with standard 115 Volt plug
- Steel approach ramps
- Four runway drip trays
- One bottle jack tray
- Poly caster kit
- Durable black powder coat finish

**CAN PRO PARK  
FOUR POST LIFTS  
FIT IN MY SHOP  
OR GARAGE?**



### WATCH & LEARN!

Scan this code to watch the CEILING HEIGHT CALCULATOR video



## PP8 PLUS SPECIFICATIONS:

Capacity	9,000 lbs.
Maximum Rise	84"
Clearance Under Runways	79 1/4"
Overall Length w/ Approach Ramps	18' 9 1/2"
Overall Length w/o Approach Ramps	16' 1 1/8"
Overall Width with Motor	11' 1/2"
Overall Width without Motor	10' 1 1/2"
Approach Ramp Length	37"
Runway Width	20"
Runway Length	184 1/2"
Runway Height	4 3/4"
Drive Through Width	97"
Column Height	8' 1"
Clearance Between Columns	109 1/2"
Clearance Between Runways	39"
Outside Runway to Outside Runway	79"
Motor	115 Volt, 1HP

Specifications subject to change without notice or liability

### ALI GOLD CERTIFIED

Pro Park Lift Series meets the highest industry safety and performance standards. Your assurance of certification is the gold ALI/ETL certified label.



## PP8 PLUS LIFTS INCLUDE



**FOUR (4) DRIP TRAYS**



**ONE (1) BOTTLE JACK TRAY**  
4,500 lbs. Capacity



**POLY CASTER KIT**  
Includes four casters

## AVAILABLE ACCESSORIES



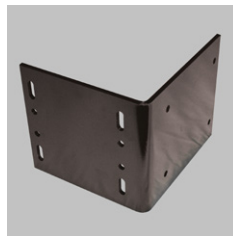
### PRO JACK 4500

- 4,500 lbs. capacity economical sliding bridge jack with hydraulic hand pump
- Requires no air or electricity

### PRO FLOOR 9

#### TURN THE SPACE BETWEEN RUNWAYS INTO A FULL FLOOR FOR ADDITIONAL STORAGE

- Floor panels to fill space between runways for versatile storage needs
- Requires 8 panels for full floor
- 375 lbs. capacity per panel
- Width: 39" / Length: 22"
- Weight: 30 lbs.



### 90° POWER UNIT BRACKET

- Moves power unit to front of column for additional space.
- Must be mounted on rear side vs. front side of column



### ROTARY SOLUTIONS

To learn more about all of our automotive service and repair solutions or to contact your local distributor, visit us at [www.RotarySolutions.com](http://www.RotarySolutions.com) today.

#### Need assistance or have questions? We're here to help:

800.445.5438 / Sales: [insidesales@rotarysolutions.com](mailto:insidesales@rotarysolutions.com)  
Technical Support: [LD-techsupport@rotarysolutions.com](mailto:LD-techsupport@rotarysolutions.com)

### ROTARY SOLUTIONS™

2700 Lanier Drive | Madison, IN 47250, U.S.A.

Lit# [Direct.PP9PLUS.Cutsheet.10.01.2024](#)

©2024 VEHICLE SERVICE GROUP™

All Rights Reserved. Unless otherwise indicated, ROTARY SOLUTIONS™, VEHICLE SERVICE GROUP™, DOVER® and all other trademarks are property of Dover Corporation and its affiliates.

Product specifications, part numbers, images and component descriptions are subject to change without notice or liability.