

PHOENIX™
ROLLING JACKS

NEW HIGH CAPACITY HYDRAULIC ROLLING JACK FOR PULLING RACK DECKS

THE PERFORMANCE EDGE:

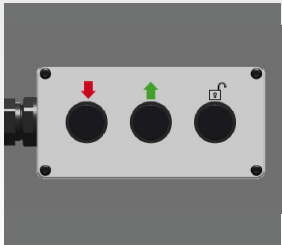
Upgrade your shop without breaking the bank with CHIEF's new Rolling Jacks. Backwards compatible, these jacks are packed with incredible features.



ADVANCED SAFETY & PROTECTION

These adjustable Rolling Jacks allow technicians to well-balance and secure vehicles to the Phoenix Frame Rack thanks to:

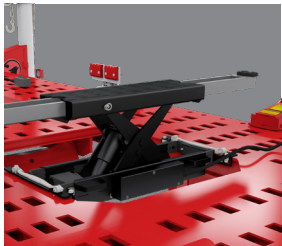
- Visible Locking Indicators
- Integrated Locking Mechanisms
- Smooth Pendant-Controlled Hydraulic System
- Heavy Duty Construction.



INDUSTRY-LEADING PENDANT CONTROLS

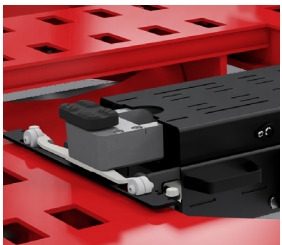
Smoother, faster, and more accurate lifting operations than competitive systems.

- Service from a safe distance, reducing the need for manual adjustments by or under vehicles.



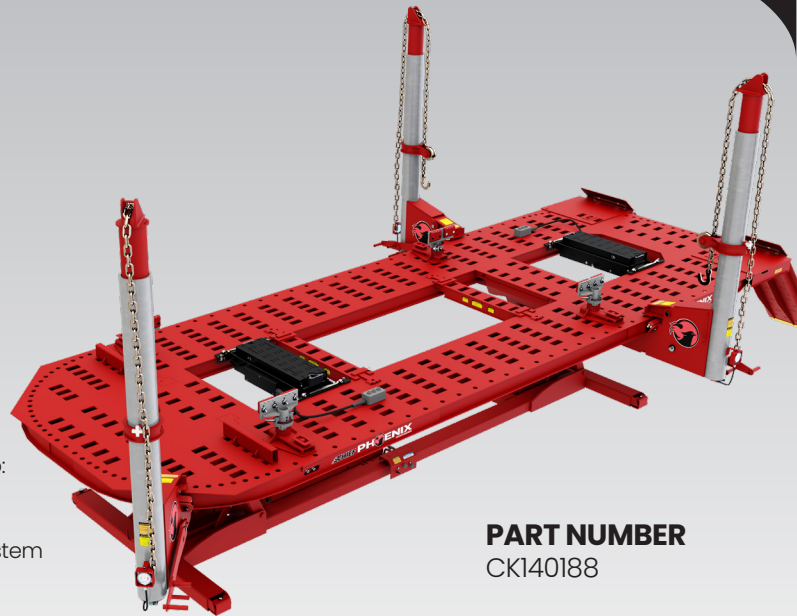
FLEXIBLE LIFTING & GREATER VEHICLE ACCESS

Engineered for speed and simplicity, CHIEF's flexible Rolling Jacks allow shops to quickly lift any vehicle on the road today (within the rack's lifting capacity), granting technicians greater access to critical vehicle components.

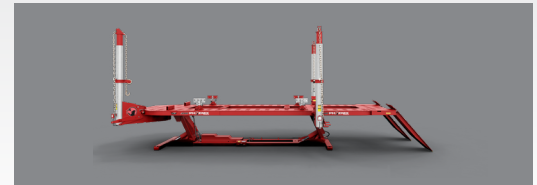


GOODBYE SKETCHY HANDHELD JACKS

Establishes a safer, four-point-of-contact system, enabling shops to leave unsafe handheld jacks in the past.



PART NUMBER
CK140188



BACKWARD COMPATIBILITY

This new Rolling Jack system offers full backward compatibility, seamlessly integrating with current and older models. This ensures that upgrades or expansions can be made without costly replacements. Older models include:

PRODUCT DETAILS

- Air-Hydraulic Power
- 5,700-Pound Lifting Capacity
- Pendant Controls
- Interchangeable Adapters

Available
for Different Sizes

- Color: Black
- Weight: 278 lbs.

POWERFUL ADD-ONS:

Long Roller Guide, Long Front (CHB6247750)

Accy Chief Adapter Accessory Package (CHBAC) **Chief EV Bridge W/Remote** (CHBSD26PHL)

COMPATIBLE MODEL



PHOENIX™ FRAME RACK | PN: CK140189

Phoenix provides the size and flexibility to profitably repair today's cars and trucks. Designed and engineered with the industry-leading features you've come to expect from CHIEF, the new Phoenix Frame Rack offers the size, capacity, and flexibility for your shop needs.

THE PERFORMANCE EDGE:

PORT-A-FRAME LIFTING SYSTEM

CHIEF's heavy duty, innovative lifting system has a 12,000-lifting capacity with a 22' by 92" deck supporting car repairs to large delivery vans.

MORE WORKSPACE

A variable height rack with an internal pump allows for more workspace. A unique hydraulic pump lifting system centered in the middle of the rack makes this possible.

MULTIPLE IN-DECK QUICK CONNECTORS

The Phoenix features multiple in-deck quick connectors. Plug in at the deck's four corners to adjust to different angles for multiple pullings.



ROTARY SOLUTIONS

To learn more about all of our automotive service and repair solutions or to contact your local distributor, visit us at www.RotarySolutions.com today.

Need assistance or have questions? We're here to help:

800.445.5438 / Sales: insidesales@rotarysolutions.com
 Technical Support: chiefsupport@rotarysolutions.com

ROTARY SOLUTIONS™

2700 Lanier Drive | Madison, IN 47250, U.S.A.

Lit# CHIEF.PHOENIX RB.J.Cutsheet.10.01.2024

©2024 VEHICLE SERVICE GROUP™

All Rights Reserved. Unless otherwise indicated, ROTARY SOLUTIONS™, VEHICLE SERVICE GROUP™, DOVER® and all other trademarks are property of Dover Corporation and its affiliates.

Product specifications, part numbers, images and component descriptions are subject to change without notice or liability.

PHOENIX FRAME RACK SPECS

FEATURE	22' RACK (6706mm)	20' RACK (6096mm)
Maximum Length with Ramps & Towers	29'-3" (8915mm)	27'-3" (8306mm)
Deck Width	7'-8" (2337mm)	7'-8" (2337mm)
Maximum Width (Footprint) with Towers	12'-6" (3556mm)	12'-6" (3556mm)
Max. Height	9'-4" (2840mm)	9'-4" (2840mm)
Height with Tower Rams extended	10'-2" (3099mm)	10'-2" (3099mm)
Clearance required on all sides	2'-2" (660mm)	2'-2" (660mm)
Tie-Down Openings (with optional cross-member)	272 284	252 264
Deck Plate Strength	50,000 PSI Yield A-572 Steel Plating	50,000 PSI Yield A-572 Steel Plating
Power / Single Phase	115 / 208 V / 20 Amp	115 / 208 V / 20 Amp
Air Supply / Power Required	100 PSI (6.89476 Bar)	100 PSI (6.89476 Bar)
Weight: 2 Tower / 3 Tower	7,100 lbs. / 7,750 lbs.	6,410 lbs. / 7,060 lbs. 2,907 kg / 3,202 kg



Quiet Operation



Easy-to-Use Controls

