

F10

**RAISE AND SERVICE
PASSENGER CARS,
TRUCKS, AND VANS**

**OPTIONAL HEIGHT
CONFIGURATIONS
WITH ADJUSTABLE
WIDTH CHOICES**

**T100295 Extended
Height Kit***

- Column extension kit adds an additional 2 feet to the top of the standard lift.
- Kit includes an extended length hose, return line, and cables.



*For use on the current 500 series model F10 Forward Two Post Lifts.

**SPRING OPERATED
ARM RESTRAINTS**

- Keeps lift arms performing at their peak performance.
- Arm restraints disengage at floor level

**DURABLE POWDER
COAT PAINT FINISH**

- Provides exceptional protection from the wears a shop will see for years



**F10
LIFTS INCLUDE**

**LARGE LOW-PROFILE
PADDED DROP-IN
ADAPTERS**

**FOUR (4) EACH
ADAPTER EXTENSIONS**

- 3 1/2"
- 5"

**VERSATILE 3-STAGE FRONT
AND 2-STAGE REAR ARMS**



Model shown:
FWD F10N500MBL

**KEY
FEATURES:**

- Top mounted Direct-Pull lifting technology
- Overhead cable equalization
- Single Point lock release
- Includes adapter storage bracket
- ALI Gold Certified



F10*

FEATURES & SPECIFICATIONS:

| | |
|--|--------------------------------|
| Capacity | 10,000 lbs. |
| Maximum Rise with Extensions | 76 1/4" |
| Overall Height | 11' 9" |
| Optional Extended Height* | 13' 9" |
| Ceiling Height Required | 12' |
| Overhead Switch Height | 137 5/8" |
| Width Inside Columns | 109" Standard 115" Optional |
| Overall Floor Width | 10' 9" or 11' 5" |
| Drive-Thru Width | 99" or 105" |
| Front Arm Reach (Min. / Max.) | 24 1/2" / 58" |
| Rear Arm Reach (Min. / Max.) | 36" / 58" |
| Minimum Adapter Height with Extension | 3 3/4" |
| Maximum Adapter Height with 5" Extension | 8 3/4" |
| Voltage / Amps | 208-230V 17 Amps |
| Motor / Single Phase | 2HP / 60Hz |

*With T100295 KIT

Lifts available in blue (BL) and red (RD)

Specifications subject to change without notice or liability.

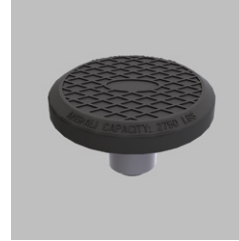
AVAILABLE ACCESSORIES



WIDE DROP IN TRUCK ADAPTERS

Wide drop in adapter for lifting 2019 Chevrolet Pick-ups

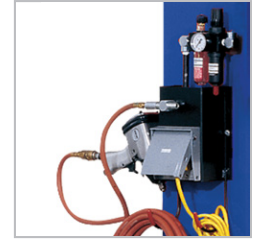
FJ6257KIT



ROUND RUBBER ADAPTERS

Kit of four rubber adapters, bracket and column hardware

FJ6245YKITM



AIR / ELECTRIC WORK STATION

Column mounted. Provides access to utilities.

- Includes two 110v electric outlets and air connection
- Filter/regulator/lubricator

FA5911BK



TIRE ARMS

100 lbs. capacity **Wheel Wing™ Tire Arm** mounts to column lift arms.

- Includes 2 arms, 2 magnetic lug nut dishes, shims
- Folds away

FA5974



COLUMN-MOUNTED LED TECH LIGHT

TECH LIGHT™ Line Light 2 34" light wands with 96 LED lights each.

- Easy positioning with magnetic clips
- 25' of cable and 20W power supply
- 3' spiral cord stretch up to 16' for placement
- Magnetic junction box

FA5701



HANDHELD LED TECH LIGHT

Rechargeable **TECH LIGHT™ Line Light R** inspection hand lamp with top spot light.

- Hook and magnet positioning
- Operates for up to 6 hours
- 4 hour charging time

FA5702



ROTARY SOLUTIONS

To learn more about all of our automotive service and repair solutions or to contact your local distributor, visit us at www.RotarySolutions.com today.

Need assistance or have questions? We're here to help:

800.445.5438 / Sales: insidesales@rotarysolutions.com

Technical Support: LD-techsupport@rotarysolutions.com

ROTARY SOLUTIONS™

2700 Lanier Drive | Madison, IN 47250, U.S.A.

Lit# [Forward.F10.Cutsheet.10.01.2024](#)

©2024 VEHICLE SERVICE GROUP™

All Rights Reserved. Unless otherwise indicated, ROTARY SOLUTIONS™, VEHICLE SERVICE GROUP™, DOVER® and all other trademarks are property of Dover Corporation and its affiliates.

Product specifications, part numbers, images and component descriptions are subject to change without notice or liability.

