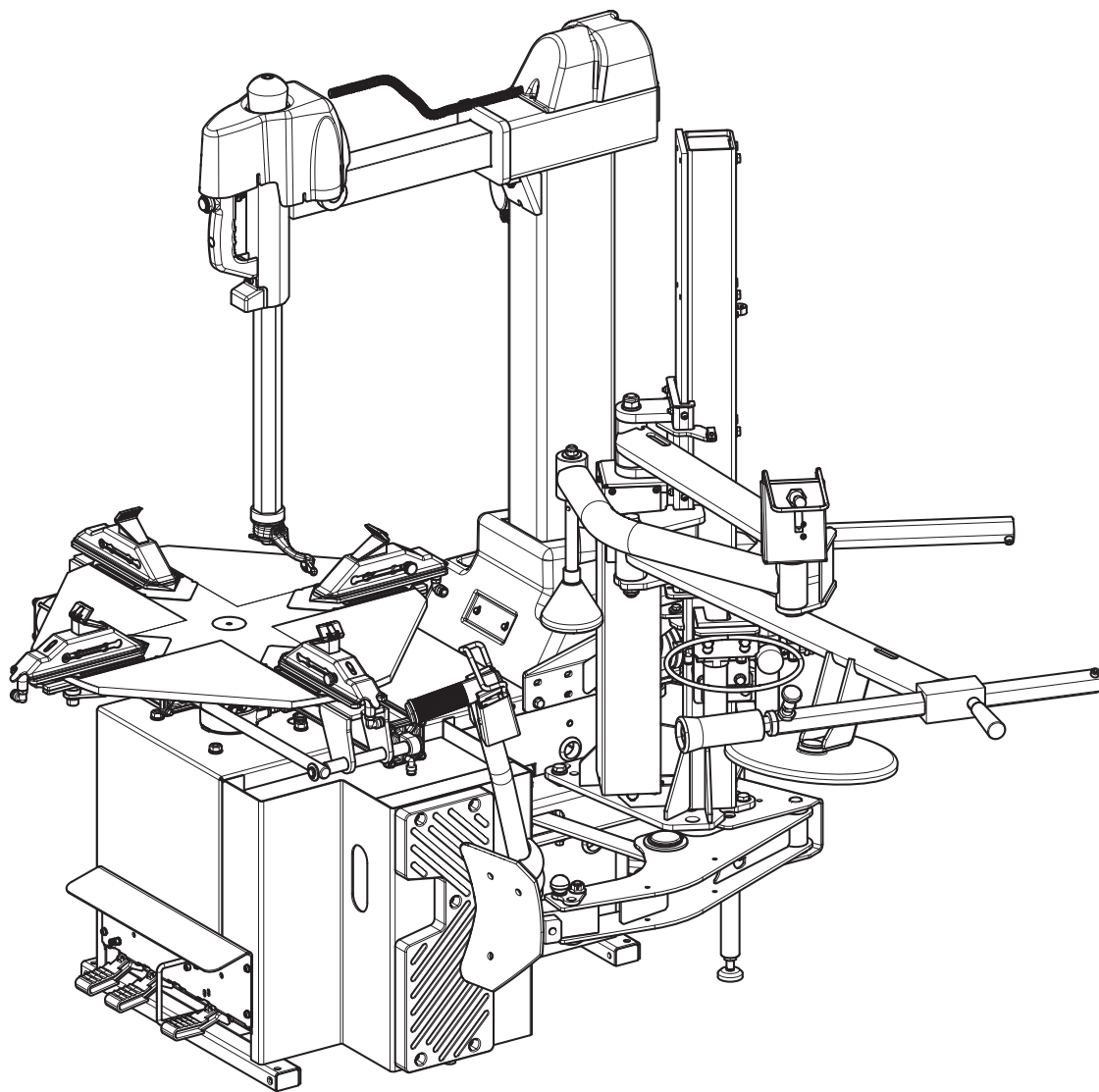




RWC645D.26IHRB (R145DR) Series Tire Changer



**P
A
R
T
S**

**B
R
E
A
K
D
O
W
N**

SUMMARY - SOMMAIRE - SUMARIO

Drawing Number 1 - Rev. 6 _____ 4	Drawing Number 11 - Rev. 3 _____ VSG800A102 29
<i>MAIN ASSEMBLY ASSEMBLAGE GENERAL JUNTO GENERAL</i>	<i>BEAD BREAKER CONTROL ON SHOVEL COMMANDE DÉCOLLE-PNEUS SUR PALETTE COMANDO DESTALONADOR SOBRE PALETA</i>
Drawing Number 2 - Rev. 2 _____ VS730091600 6	Drawing Number 12 - Rev. 2 _____ VS730095561 32
<i>ASSEMBLED POST ASSEMBLY ENSEMBLE POTEAU ASSEMBLÉ CONJUNTO PALO ENSAMBLADO</i>	<i>INVERTER PEDALBOARD ASSEMBLY ENSEMBLE PÉDALIER INVERSEUR CONJUNTO PEDALERA INVERSOR</i>
Drawing Number 3 - Rev. 3 _____ 9	Drawing Number 13 - Rev. 2 _____ VS140990401 35
<i>GUARD AND LATERAL CASING ASSEMBLIES ENSEMBLES CARTER ET COFFRE LATÉRAL CONJUNTOS CÁRTER Y CAPOT LATERAL</i>	<i>CHUCK PEDAL ASSEMBLY ENSEMBLE PÉDALE MANDRIN CONJUNTO PEDAL MANDRIL</i>
Drawing Number 4 - Rev. 2 _____ VS730094291 11	Drawing Number 14 - Rev. 2 _____ VS140990391 36
<i>CHASSIS ASSEMBLY ENSEMBLE CHÂSSIS CONJUNTO BASTIDOR</i>	<i>BEAD BREAKER PEDAL ASSEMBLY ENSEMBLE PÉDALE DÉCOLLE-PNEUS CONJUNTO PEDAL DESTALONADOR</i>
Drawing Number 5 - Rev. 3 _____ VS730095082 12	Drawing Number 15 - Rev. 2 _____ VS140990431 37
<i>PLATE ASSEMBLY WITH INVERTER ENSEMBLE PLAQUE AVEC INVERSEUR CONJUNTO PLACA CON INVERSOR</i>	<i>PEDAL ASSEMBLY ENSEMBLE PÉDAL CONJUNTO PEDAL</i>
Drawing Number 5 - Rev. 4 _____ VS730096870 14	Drawing Number 16 - Rev. 0 _____ 38
<i>INVERTER ASSEMBLY ENSEMBLE INVERSEUR CONJUNTO INVERSOR</i>	<i>INFLATION ASSEMBLY ENSEMBLE GONFLAGE CONJUNTO INFLADO</i>
Drawing Number 6 - Rev. 2 _____ VS140390530 15	Drawing Number 17 - Rev. 4 _____ VS730097140 40
<i>TILTING POST PIVOT ASSEMBLY ENSEMBLE POINT D'APPUI BASCULAGE POTEAU CONJUNTO FULCRO VUELCO PALO</i>	<i>GREASER REDUCTION GEAR FILTER AIR TREATMENT ASSEMBLY + HOSE NIPPLE ENSEMBLE TRAITEMENT AIR FILTRE RÉDUCTEUR LUBRIFICATEUR + PORTE-TUYAU CONJUNTO TRATAMIENTO AIRE FILTRO REDUCTOR LUBRIFICADOR + PORTA-GOMA</i>
Drawing Number 7 - Rev. 2 _____ VS730092590 16	Drawing Number 18 - Rev. 2 _____ PLUS83VSC 41
<i>TILTING CYLINDER ASSEMBLY ENSEMBLE CYLINDRE BASCULAGE CONJUNTO CILINDRO VUELCO</i>	<i>BEAD PRESS DEVICE WITH ROTATING ARM DISPOSITIF POUSSE-TALON AVEC BRAS ROTATIF DISPOSITIVO PRESIONATALÓN CON BRAZO GIRATORIO</i>
Drawing Number 8 - Rev. 3 _____ VS730094800 17	Drawing Number 19 - Rev. 1 _____ VS770790621 44
<i>10"-26" CHUCK ASSEMBLY MONTAGE MANDRIN 10"-26" MONTAJE MANDRIL 10"-26"</i>	<i>ARMS SUPPORT SUPPORT BRAS SOPORTE BRAZOS</i>
Drawing Number 8 - Rev. 4 _____ VS730094801 20	Drawing Number 20 - Rev. 1 _____ VS770790651 45
<i>10"-26" CHUCK ASSEMBLY MONTAGE MANDRIN 10"-26" MONTAJE MANDRIL 10"-26"</i>	<i>BRACKETS KIT KIT BRIDAGE KIT BRIDAS</i>
Drawing Number 9 - Rev. 1 _____ VS140302093 23	Drawing Number 21 - Rev. 1 _____ VSG800A129 47
<i>ROTATING DISTRIBUTOR ASSEMBLY ENSEMBLE DISTRIBUTEUR ROTATIF CONJUNTO DISTRIBUIDOR GIRATORIO</i>	<i>LIFT ROLLER ARM + CYLINDRICAL ROLL BRAS ROULEAU ÉLÉVATEUR + ROULEAU CYLINDRIQUE BRAZO RODILLO ELEVADOR + RODILLO CILÍNDRICO</i>
Drawing Number 10 - Rev. 1 _____ VS730093872 24	Drawing Number 22 - Rev. 0 _____ VS730095020 49
<i>GEARMOTOR ASSEMBLY WITH INVERTER ENSEMBLE MOTORÉDUCTEUR AVEC INVERSEUR CONJUNTO MOTORREDUCTOR CON INVERSOR</i>	<i>ACCESSORY KIT ASSEMBLY ENSEMBLE DOTATION CONJUNTO DOTACIÓN</i>
Drawing Number 11 - Rev. 2 _____ VSG800A102 26	Drawing Number 23 - Rev. 0 _____ 50
<i>BEAD BREAKER CONTROL ON SHOVEL COMMANDE DÉCOLLE-PNEUS SUR PALETTE COMANDO DESTALONADOR SOBRE PALETA</i>	<i>NAMEPLATES POSITIONING POSITIONNEMENT PLAQUETTES POSICIONAMIENTO PLAQUITAS</i>



IN THIS DOCUMENT THE FOLLOWING GRAPHIC REPRESENTATION IS ADOPTED:
 DANS CE DOCUMENT, LA REPRÉSENTATION GRAPHIQUE SUIVANTE EST ADOPTÉE:
 EN ESTE DOCUMENTO, SE ADOPTA LA SIGUIENTE REPRESENTACIÓN GRÁFICA:



This column indicates the component identification number on the drawing.
 Cette colonne indique le numéro d'identification du composant sur le dessin.
 Esta columna indica el número de identificación del componente en el dibujo.



Items available as spare parts are marked with the symbol "✓" in this column.
 Dans cette colonne, les articles disponibles comme pièces de rechange sont marqués par le symbole "✓".
 En esta columna, los artículos disponibles como repuestos están marcados con el símbolo "✓".

D.R

This column indicates the drawing in which the component is exploded and its possible revision.
 Cette colonne indique le dessin dans lequel le composant est éclaté et sa révision éventuelle.
 Esta columna indica el dibujo en el que se descompone el componente y su posible revisión.

D.R

Number of drawing	Revision index
Numéro de dessin	Index de révision
Número dibujo	Índice de revisión



In this column the unit/component identification code is indicated.
 Cette colonne indique le code d'identification du groupe/composant.
 En esta columna se indica el código de identificación del grupo/componente.



Symbol used to indicate a gasket kit.

Symbole utilisé pour indiquer un kit de joints.

Símbolo utilizado para indicar un kit de juntas.



Symbol used to indicate that the assembly/component is standard.
 Symbole utilisé pour indiquer que le groupe/composant est standard.
 Símbolo utilizado para indicar que el conjunto/componente es estándar.

OPT

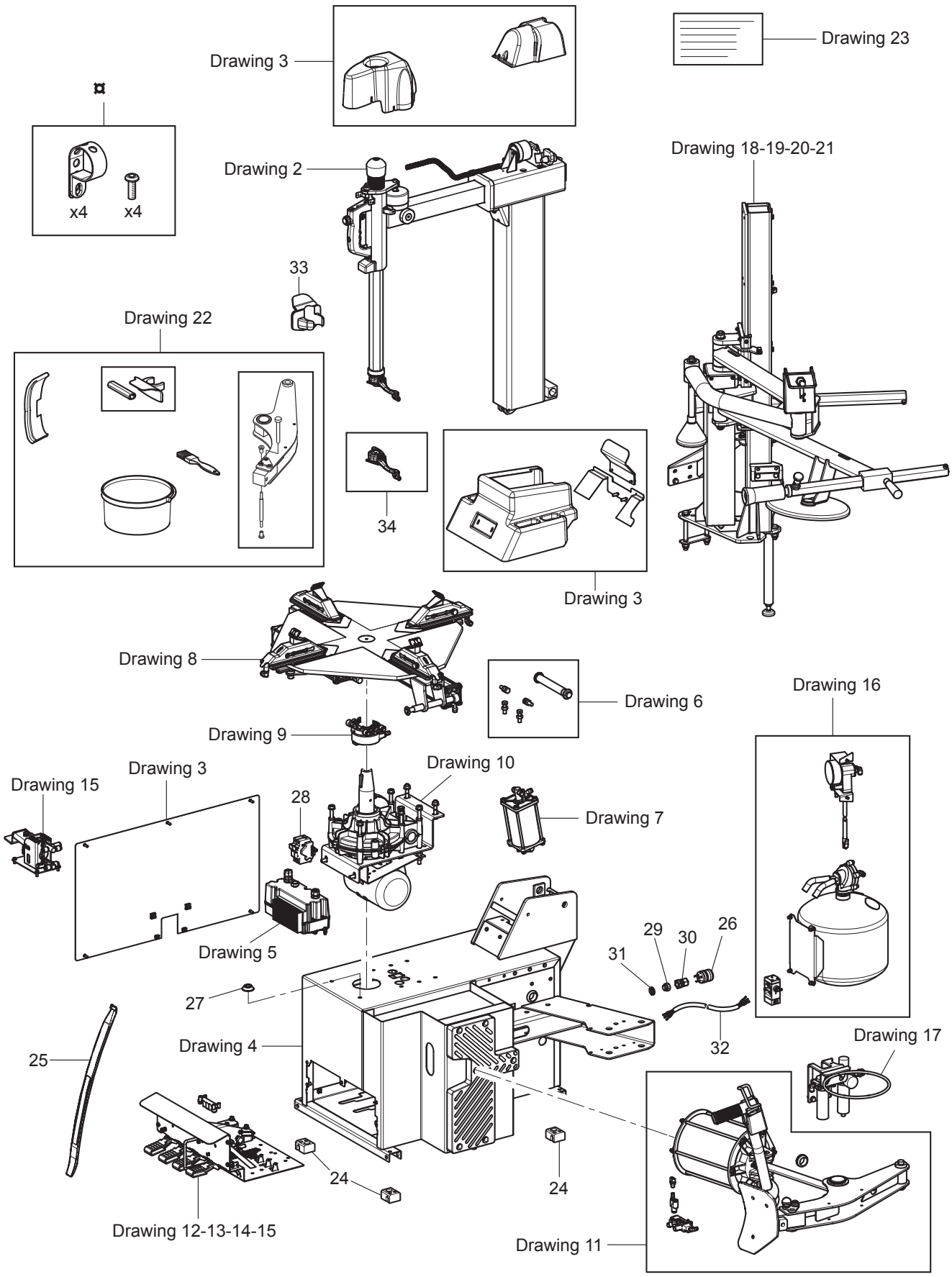
Symbol used to indicate that the assembly/component is OPTIONAL.
 Symbole utilisé pour indiquer que le groupe/composant est OPTIONNEL.
 Símbolo utilizado para indicar que el conjunto/componente es OPCIONAL.



Symbol indicating the serial number from which the drawing/component is valid.
 Symbole utilisé pour indiquer le numéro de série à partir duquel le dessin/composant est valide.
 Símbolo utilizado para indicar el número de serie a partir del cual se considera válido el dibujo/componente.



Symbol indicating the serial number up to which the drawing/component is valid.
 Symbole utilisé pour indiquer jusqu'à quel numéro de série le dessin/composant est valide.
 Símbolo utilizado para indicar hasta qué número de serie se considera válido el dibujo/componente.

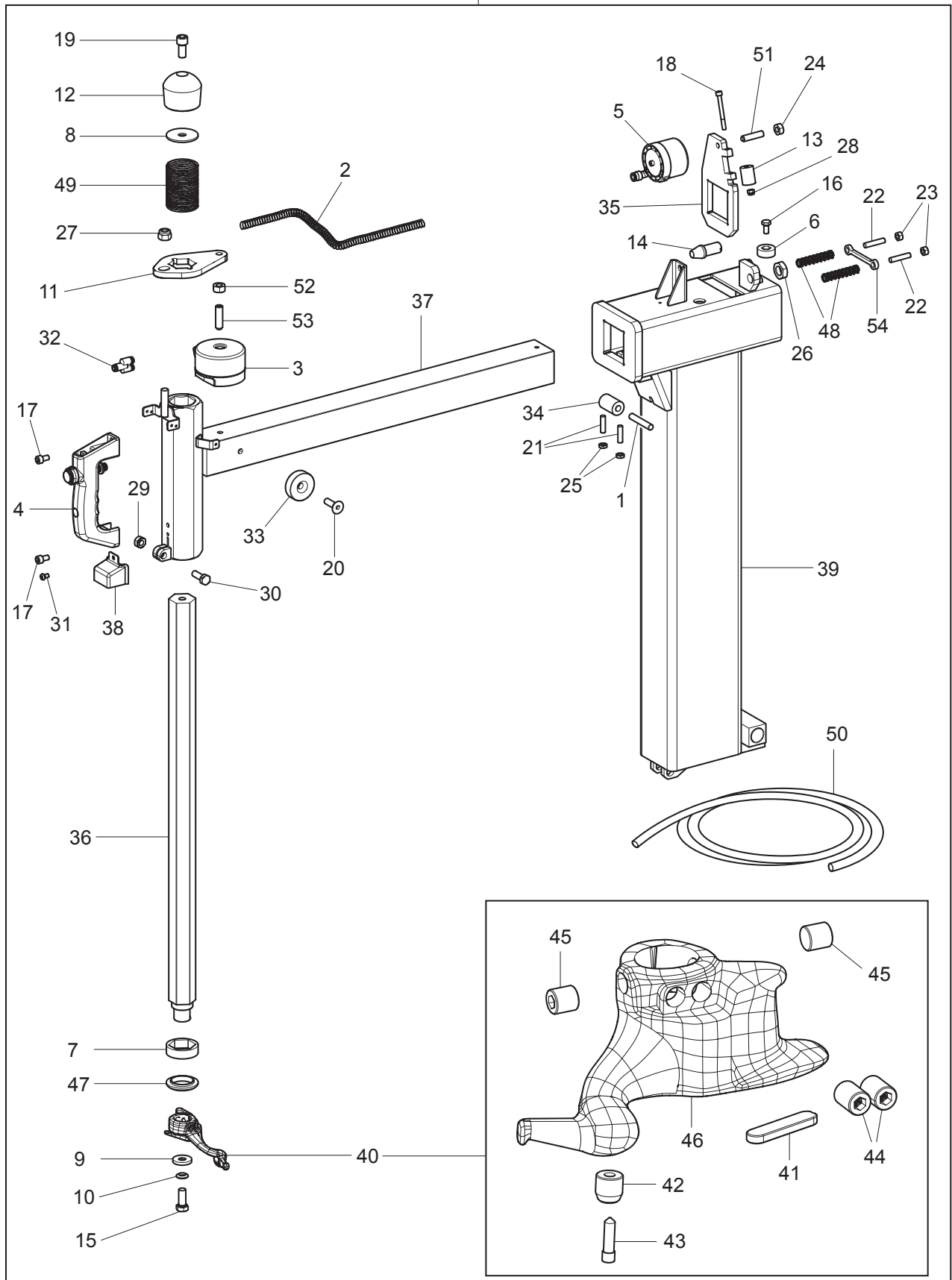


Drawing Number 1 - Rev. 6

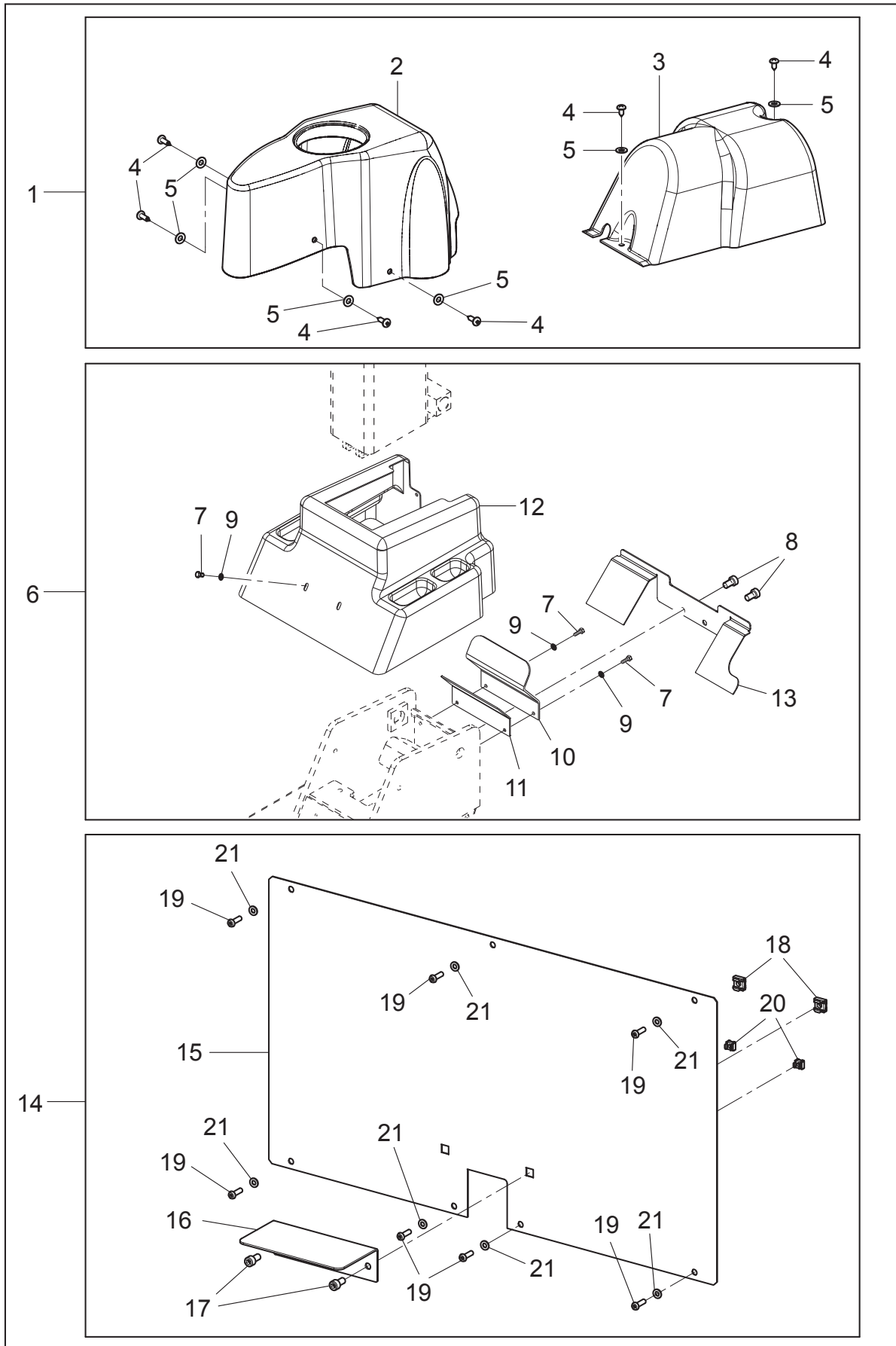
#		D.R	N	Description	Description	Descripción		
2		2.2	VS730091600	Assembled post assembly	Ensemble poteau assemblé	Conjunto palo ensamblado		
3		3.3	-	Guard and lateral casing assemblies	Ensembles carter et coffre latéral	Conjuntos cárter y capot lateral		
4		4.2	VS730094291	Chassis assembly	Ensemble châssis	Conjunto bastidor		
5		5.3	VS730095082	Plate assembly with inverter	Ensemble plaque avec inverseur	Conjunto placa con inversor		10476746
	✓	5.4	VS730096870	Inverter assembly	Ensemble inverseur	Conjunto inversor	10476747	
6		6.2	VS140390530	Tilting post pivot assembly	Ensemble point d'appui basculage poteau	Conjunto fulcro vuelco palo		
7		7.2	VS730092590	Tilting cylinder assembly	Ensemble cylindre basculage	Conjunto cilindro vuelco		
8	✓	8.3	VS730094800	10"-26" chuck assembly	Montage mandrin 10"-26"	Montaje mandril 10"-26"		10476759
		8.4	VS730094801	10"-26" chuck assembly	Montage mandrin 10"-26"	Montaje mandril 10"-26"	10476760	
9	✓	9.1	VS140302093	Rotating distributor assembly	Ensemble distributeur rotatif	Conjunto distribuidor giratorio		
10		10.1	VS730093872	Gearmotor assembly with inverter	Ensemble motorréducteur avec inverseur	Conjunto motorreductor con inversor		
11		11.2	VSG800A102	Bead breaker control on shovel	Commande décolle-pneus sur palette	Comando destalonador sobre paleta		
		11.3	VSG800A102	Bead breaker control on shovel	Commande décolle-pneus sur palette	Comando destalonador sobre paleta		
12	✓	12.2	VS730095561	Inverter pedalboard assembly	Ensemble pédalier inverseur	Conjunto pedalera inversor		
13	✓	13.2	VS140990401	Chuck pedal assembly	Ensemble pédale mandrin	Conjunto pedal mandril		
14	✓	14.2	VS140990391	Bead breaker pedal assembly	Ensemble pédale décolle-pneus	Conjunto pedal destalonador		
15	✓	15.2	VS140990431	Pedal assembly	Ensemble pédal	Conjunto pedal		
16	✓	16.0	-	Inflation assembly	Ensemble gonflage	Conjunto inflado		
17	✓	17.4	VS730097140	Greaser reduction gear filter air treatment assembly + hose nipple	Ensemble traitement air filtre réducteur lubrificateur + porte-tuyau	Conjunto tratamiento aire filtro reductor lubricador + porta-goma		
18	✓	18.2	PLUS83VSC	Bead press device with rotating arm	Dispositif pousse-talon avec bras rotatif	Dispositivo presionatalón con brazo giratorio		
19	✓	19.1	VS770790621	Arms support	Support bras	Soporte brazos		
20		20.1	VS770790651	Brackets kit	Kit bridage	Kit bridas		
21		21.1	VSG800A129	Lift roller arm + cylindrical roll	Bras rouleau élévateur + rouleau cylindrique	Brazo rodillo elevador + rodillo cilíndrico		
22		22.0	VS730095020	Accessory kit assembly	Ensemble dotation	Conjunto dotación		
23		23.0	-	Nameplates positioning	Positionnement plaquettes	Posicionamiento plaquitas		
24	✓		VS140315440	Foot	Pied	Pie		
25	✓		VSG1000A52	Bead lifting lever	Levier lève-pneus	Palanca levantatalón		
26	✓		VS520169	Nema L6-20 P plug	Goupille Nema L6-20 P	Enchufe Nema L6-20 P		
27	✓		VS730015400	Protection plug	Bouchon protection	Tapón protección		
28	✓		VS730096630	UL-CSA electric assembly	Ensemble électrique UL-CSA	Conjunto eléctrico UL-CSA		
29	✓		VS599517	Reduction gear	Réducteur	Reductor		
30	✓		VS599036	Cable press	Presse-câble	Prensaestopas		
31	✓		VS533042	Ring nut	Bague	Virola		
32	✓		VS730065201	1 Ph CSA general supply cable assembly	Ensemble câble alimentation générale 1 Ph CSA	Conjunto cable alimentación general 1 Ph CSA		
33	✓		VS770012480	Protection for tool head	Protection pour tête outil	Protección para cabeza útil		
34	✓		VSG800A126	Head assembly kit	Kit ensemble tête	Kit conjunto cabeza		
	✓		VS730071060	Clamp kit	Kit collier	Kit abrazadera		



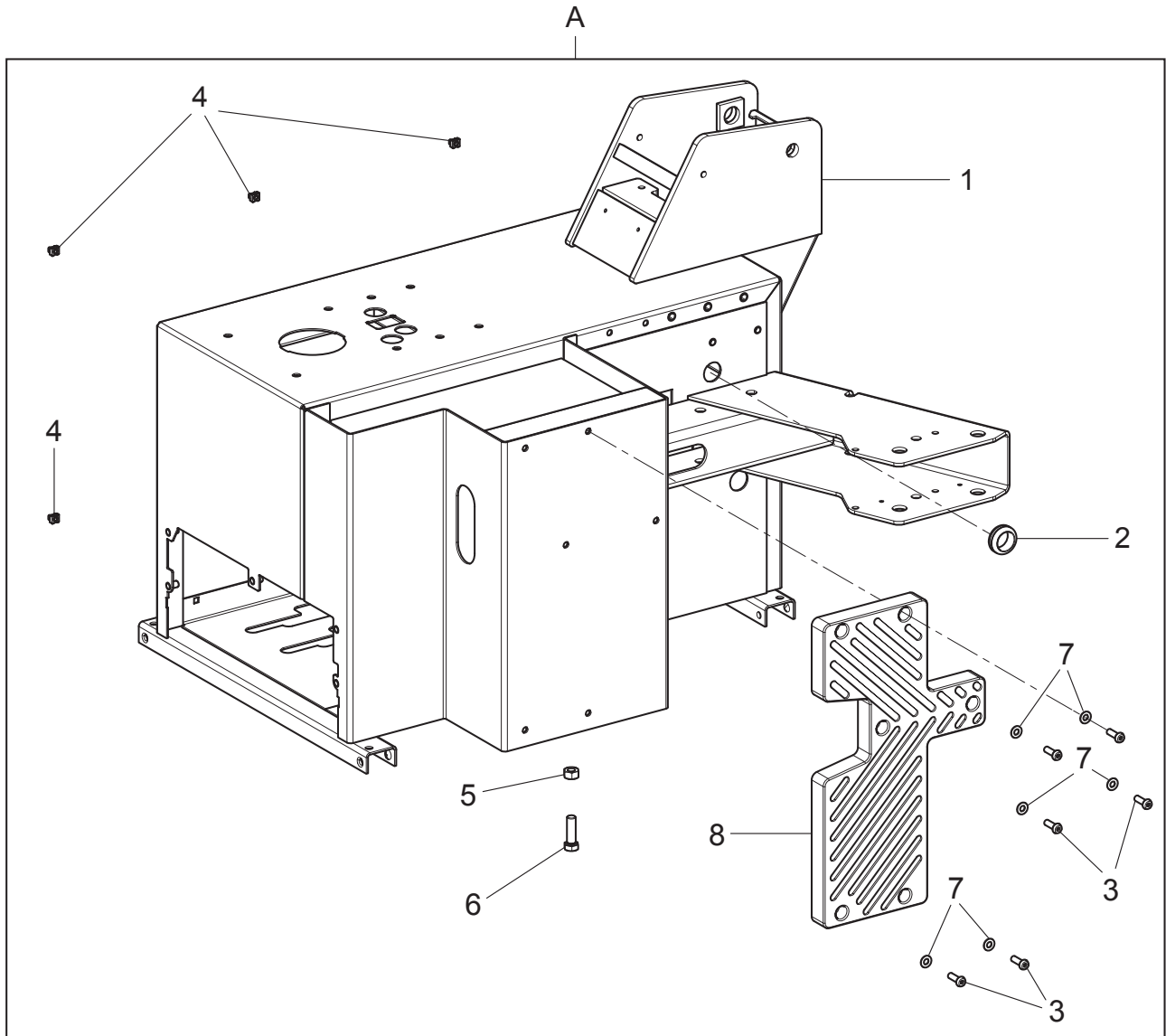
A



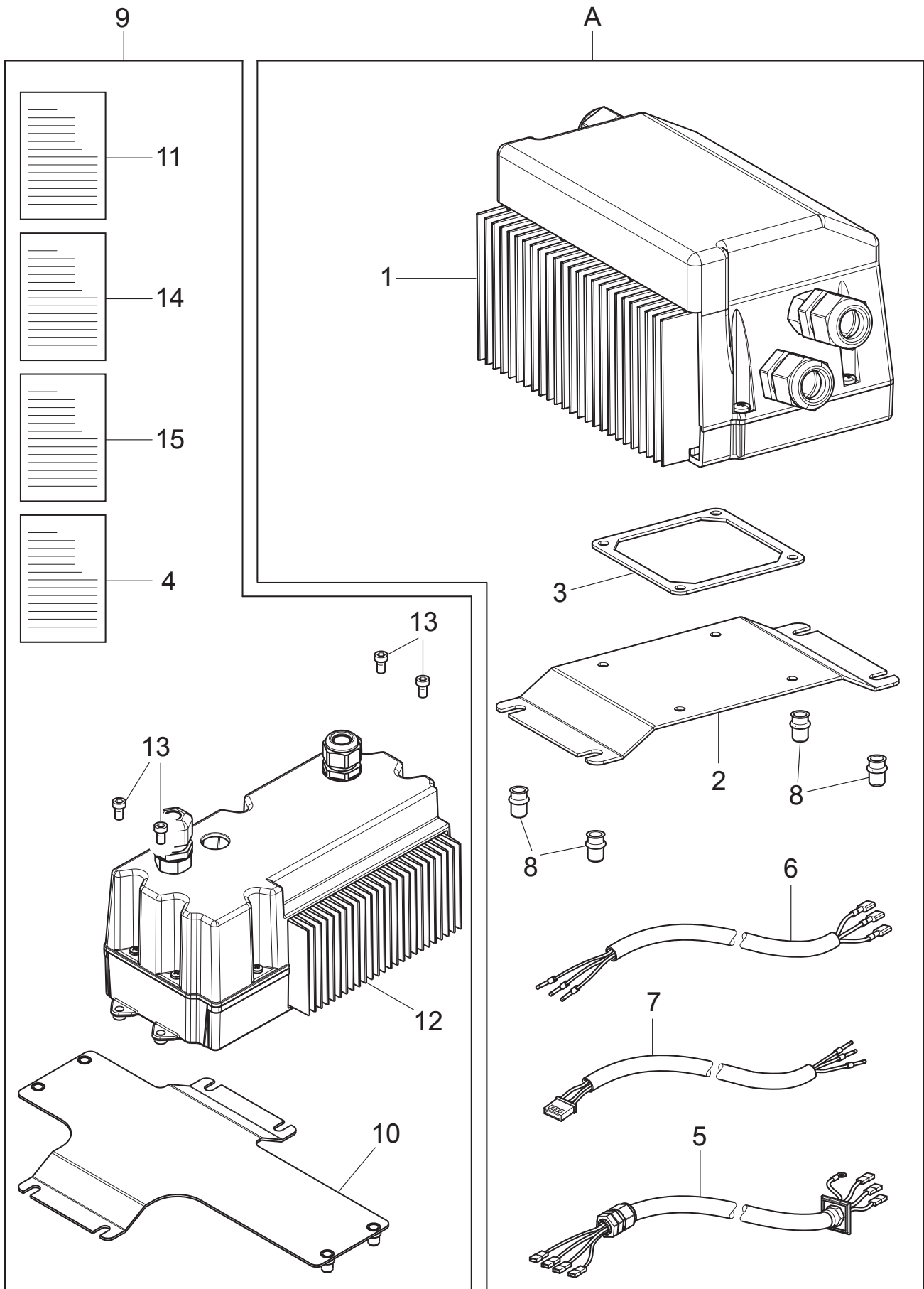
Drawing Number 2 - Rev. 2			VS730091600			→	←	
#		D.R	N	Description	Description	Descripción	→	←
1			VS234081	10x60 cylindrical pin	Goupille cylindrique 10x60	Clavija cilíndrica 10x60		
2			VS1408300	1x14x600 spring	Ressort 1x14x600	Resorte 1x14x600		
3	✓		VS730093400	D.80 neck cylinder	Cylindre étranglement D.80	Cilindro dispositivo de bloqueo D.80		
4	✓		VS2859001	C complete handle	Poignée complète C	Manija completa C		
5	✓		VS2871000	Rear neck cylinder	Cylindre étranglement postérieur	Cilindro dispositivo de bloqueo posterior		
6			VS13830247	Pad	Tampon	Tampón		
7	✓		VS140315721	40 hex-nut pad	Tampon hexagonal 40	Tampón hexágono 40		
8	✓		VS140320310	Washer	Rondelle	Arandela		
9	✓		VS140440380	Tower stopper washer	Rondelle arrêt	Arandela de seguro torreta		
10	✓		VS140440390	Ball washer	Rondelle sphérique	Arandela esférica		
11	✓		VS140710092	Neck	Étranglement	Dispositivo de bloqueo		
12	✓		VS140710160	Vertical shaft handgrip	Poignée arbre verticale	Empuñadura eje vertical		
13	✓		VS140910700	Neck roller	Rouleau étranglement	Rodillo dispositivo de bloqueo		
14	✓		VS140910711	Neck cone	Cône étranglement	Cono dispositivo de bloqueo		
15	✓		VS203072	TE M12x30 bolt	Vis TE M12x30	Tornillo TE M12x30		
16			VS203172	TE M8x16 bolt	Vis TE M8x16	Tornillo TE M8x16		
17			VS206031	TCEI M8x14 bolt	Vis TCEI M8x14	Tornillo TCEI M8x14		
18			VS206100	TCEI M6x60 bolt	Vis TCEI M6x60	Tornillo TCEI M6x60		
19	✓		VS206186	TCEI M12x25 bolt	Vis TCEI M12x25	Tornillo TCEI M12x25		
20	✓		VS209106	TSPEI M10x35 bolt	Vis TSPEI M10x35	Tornillo TSPEI M10x35		
21	✓		VS210040	STEI M8x30 bolt	Vis STEI M8x30	Tornillo STEI M8x30		
22	✓		VS210042	M8x40 STEI flat bolt	Vis STEI plane M8x40	Tornillo STEI plana M8x40		
23	✓		VS224009	M8 med. Nut	Écrou hexagonal moyen M8	Tuerca hexagonal medio M8		
24	✓		VS224011	M10 med. hex nut	Écrou hexagonal moyen M10	Tuerca hexagonal medio M10		
25	✓		VS226009	M8 jam nut	Écrou bas M8	Tuerca baja M8		
26	✓		VS226024	M18 jam hex nut	Écrou hexagonal bas M18	Tuerca hexagonal baja M18		
27	✓		VS228006	M12 self-locking nut	Écrou auto-bloquant M12	Tuerca autoblocante M12		
28	✓		VS228010	M6 self-locking nut	Écrou auto-bloquant M6	Tuerca autoblocante M6		
29			VS228310	M10 nut	Écrou M10	Tuerca M10		
30			VS256902	TE M10x30 bolt	Vis TE M10x30	Tornillo TE M10x30		
31	✓		VS271012	TBEI M6x10 bolt	Vis TBEI M6x10	Tornillo TBEI M6x10		
32	✓		VS325191	Y-6 pneumatic fitting	Raccord pneumatique Y-6	Empalme neumático Y-6		
33	✓		VS730012451	Pad	Tampon	Tampón		
34	✓		VS730014560	Roller	Rouleau	Rodillo		
35	✓		VS730015170	Rear neck	Étranglement arrière	Dispositivo de bloqueo posterior		
36	✓		VS730015320	Vertical hex-nut	Hexagone vertical	Hexágono vertical		
37			VS730017191	Horizontal square	Poutre horizontale	Viga horizontal		
38	✓		VS730017850	Guard	Carter	Cárter		
39			VS730019102	Welded post	Poteau soudé	Palo soldado		

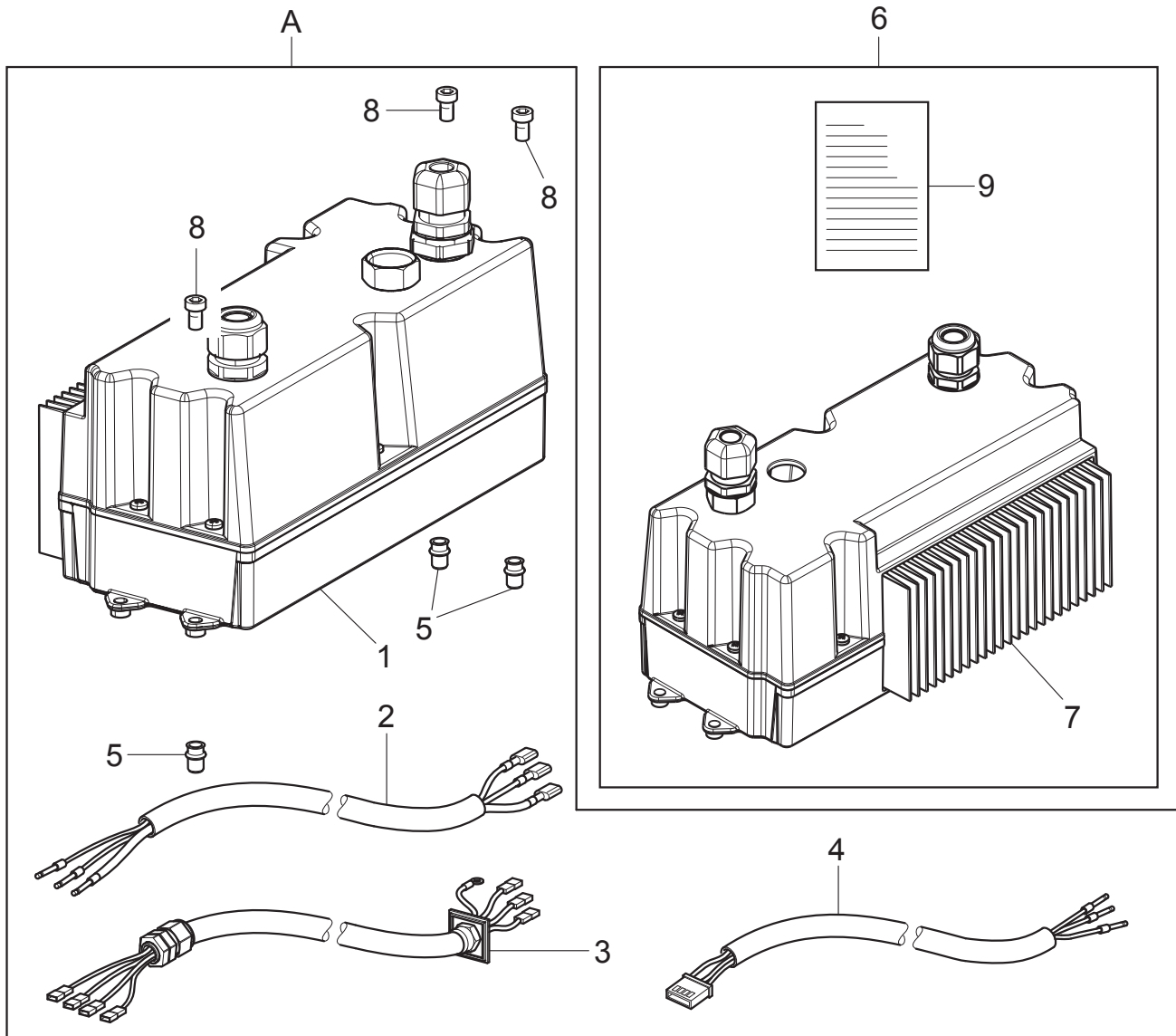


A

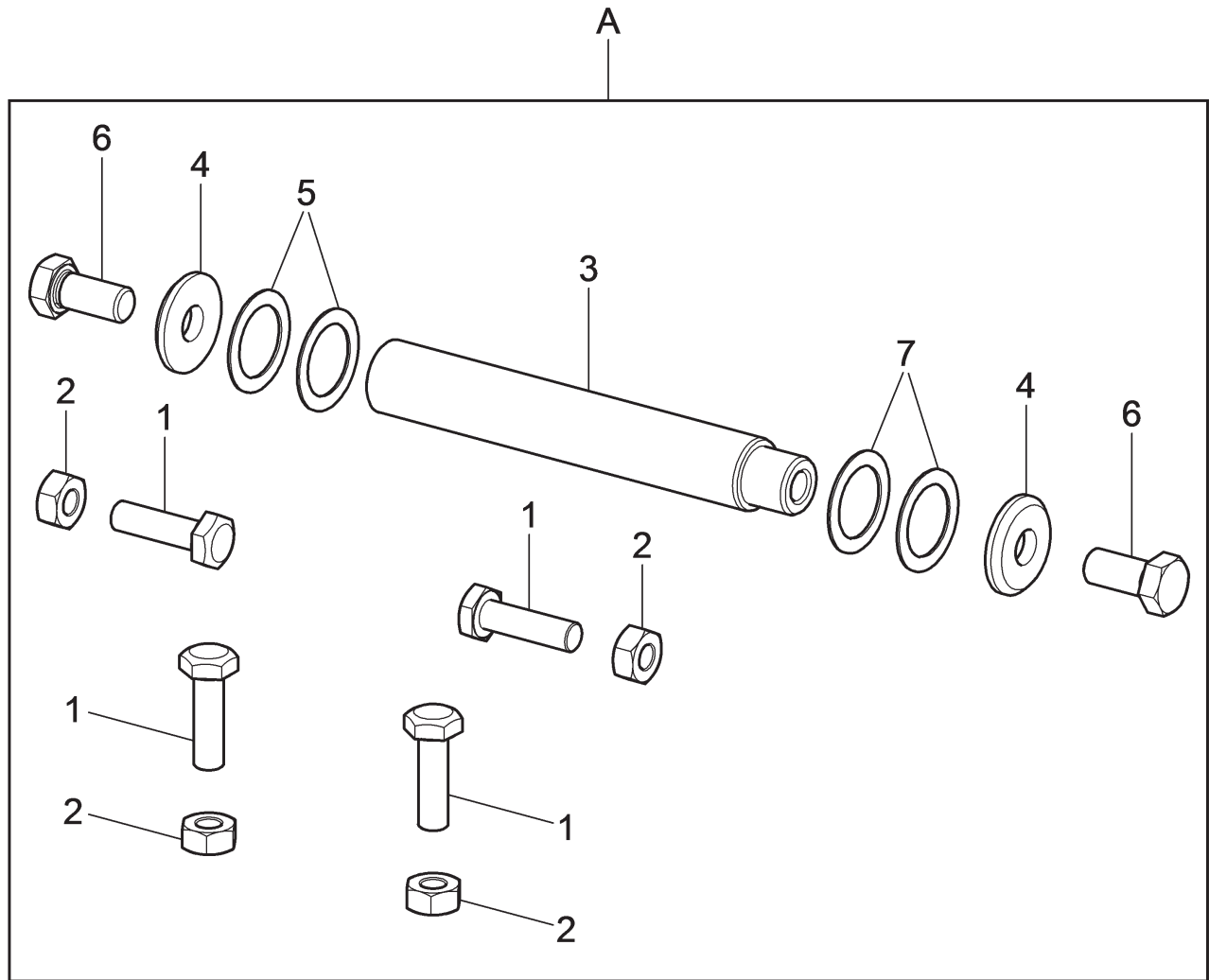


#		D.R	N	Description	Description	Descripción		
1			VS730071070	Chassis + inserts kit	Kit châssis + renforts	Kit bastidor + insertos		
2	✓		VS599418	Rubber-made hose clamp	Guide-câble en caoutchouc	Pasacable de goma		
3	✓		VS271038	TBEI M8x25 bolt	Vis TBEI M8x25	Tornillo TBEI M8x25		
4	✓		VS228250	M6 caged nut	Écrou en cage M6	Tuerca en jaula M6		
5	✓		VS224015	M12 med hex nut	Écrou hexagonal moyen M12	Tuerca hexagonal medio M12		
6	✓		VS203223	TE M12x40 bolt	Vis TE M12x40	Tornillo TE M12x40		
7	✓		VS236006	8.4 flat washer	Rondelle plane 8,4	Arandela plana 8,4		
8	✓		VS730018871	Lateral pad	Tampon latéral	Tampón lateral		
A			VS730094291	Chassis assembly	Ensemble châssis	Conjunto bastidor		

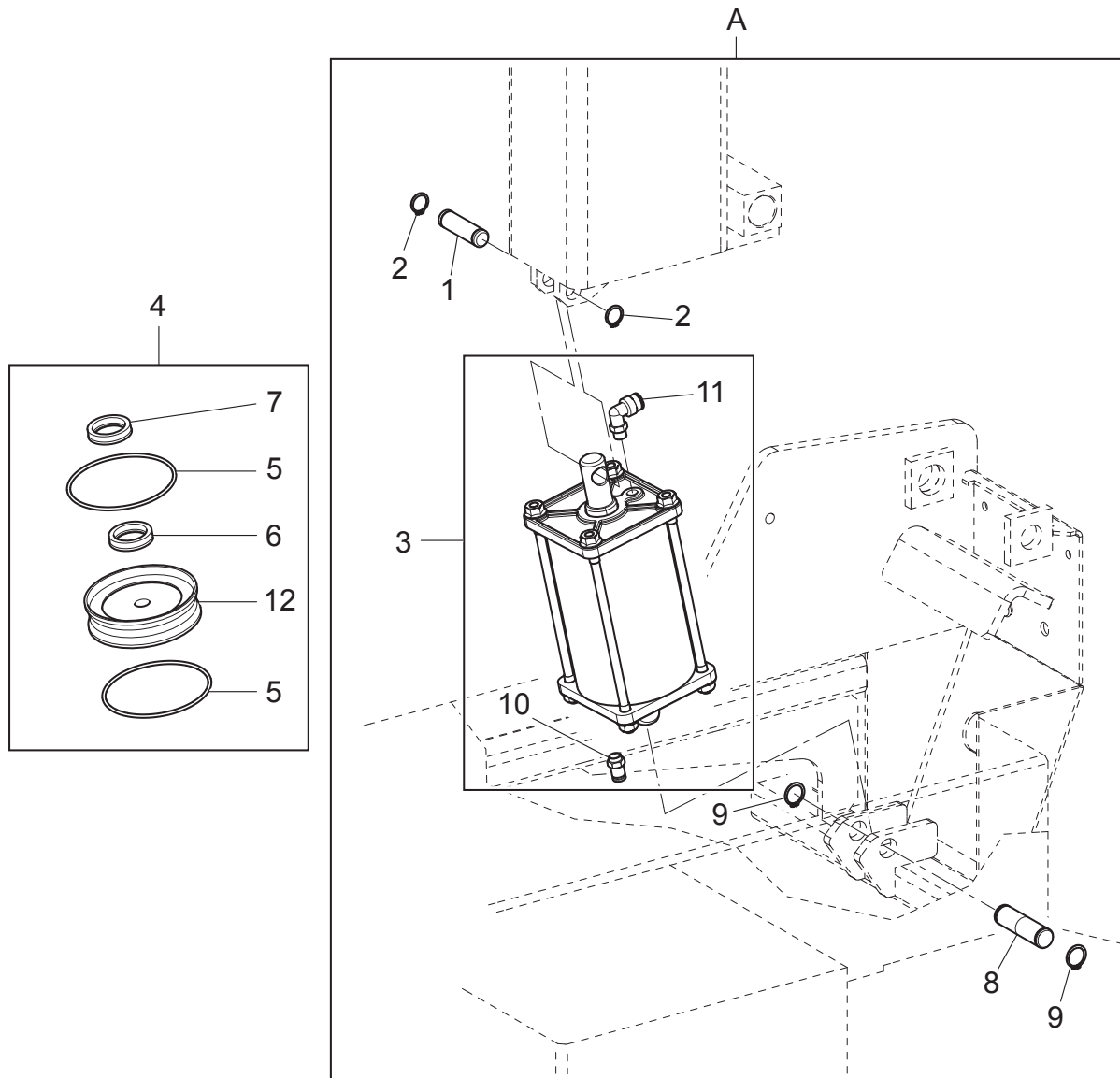




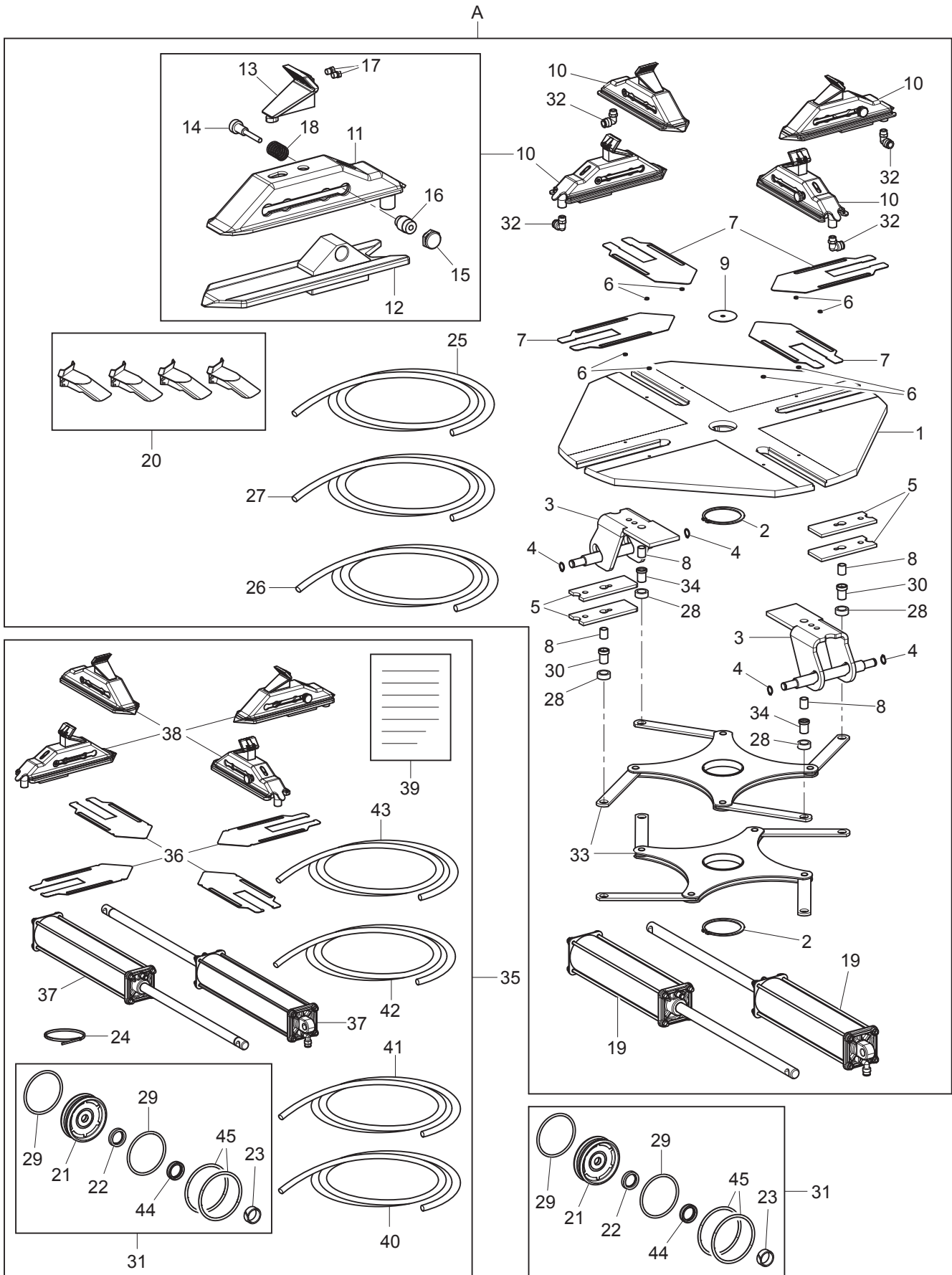
#		D.R	N	Description	Description	Descripción		
1	✓		VS730096880	Programmed inverter	Inverseur programmé	Inversor programado	10476747	
2	✓		VS730065160	Inverter supply cable assembly	Ensemble câble alimentation inverseur	Conjunto cable alimentación inversor	10476747	
3	✓		VS730065220	Remote inverter cable	Câble inverseur à distance	Cable inversor remoto		
4	✓		VS710565021	Inverter signal cable	Câble signaux inverseur	Cable señales inversor		
5			VSB9751000	M5 threaded insert	Renfort fileté M5	Inserto roscado M5		
6	✓		VS710470090	Inverter spare kit	Kit de rechange inverseur	Kit repuesto inversor	10476747	
7	✓		VS790090950	Inverter assembly	Ensemble inverseur	Conjunto inversor		
8	✓		VS206146	TCEI M5x16 bolt	Vis TCEI M5x16	Tornillo TCEI M5x16		
9			VS790005670	Inverter installation procedure	Procédure d'installation inverseur	Procedimiento de instalación inversor		
A	✓		VS730096870	Inverter assembly	Ensemble inverseur	Conjunto inversor	10476747	



#		D.R	N	Description	Description	Descripción		
1			VS730015010	Bolt	Vis	Tornillo		
2	✓		VS224011	M10 med. hex nut	Écrou hexagonal moyen M10	Tuerca hexagonal medio M10		
3			VS140315212	Pin	Pivot	Perno		
4			VS140315391	Spacer	Entretoise	Distanciador		
5			VS237501	Shim washer	Rondelle d'épaisseur	Arandela de espesor		
6	✓		VS256186	TE M12x25 bolt	Vis TE M12x25	Tornillo TE M12x25		
7	✓		VS237511	Shim washer	Rondelle d'épaisseur	Arandela de espesor		
A			VS140390530	Tilting post pivot assembly	Ensemble point d'appui basculage poteau	Conjunto fulcro vuelco palo		

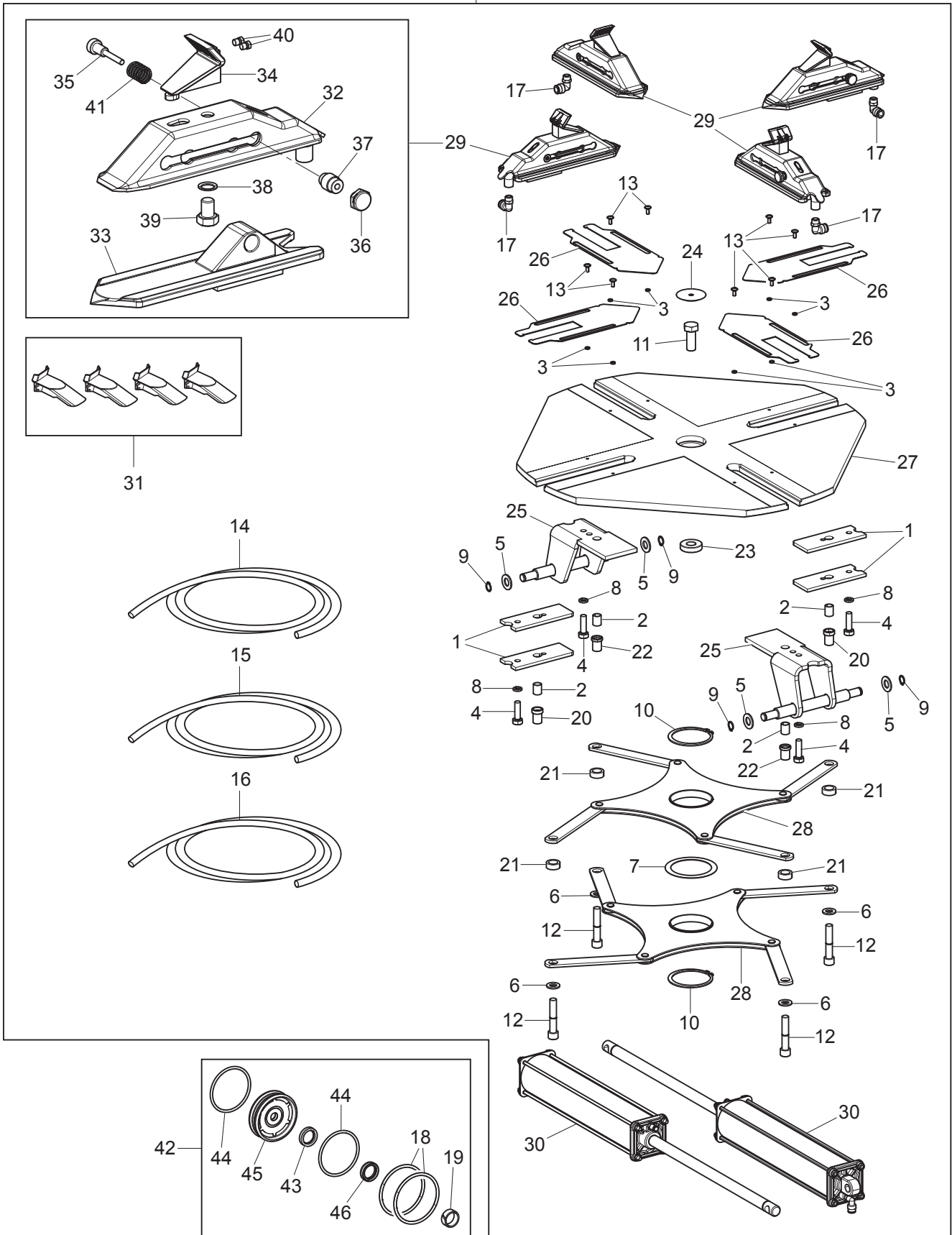


#		D.R	N	Description	Description	Descripción		
1			VS14030131	Pin	Pivot	Perno		
2	✓		VS243006	External clip ring 14 7435	Anneau de retenue extérieur 14 7435	Seeger externo 14 7435		
3	✓		VS730092580	Cylinder	Cylindre	Cilindro		
4	✓		VSGU4890	Cylinder gasket kit D.90	Kit joint cylindre D.90	Kit junta cilindro D.90		
5	✓		VS401216	OR	OR	OR		
6	✓		VS403123	Gasket	Joint	Junta		
7			VS403128DM	GSP rod gasket	Joint de tige GSP	Junta vástago GSP		
8			VSB1344800	Post cylinder pin	Pivot cylindre poteau	Perno cilindro palo		
9	✓		VS243008	External clip ring 16	Anneau de retenue extérieur 16	Seeger externo 16		
10	✓		VS325110	Fitting	Raccord	Empalme		
11	✓		VS325159	L-shaped fitting	Raccord à L	Empalme en L		
12	✓		VS321027	Piston	Piston	Pistón		
A			VS730092590	Tilting cylinder assembly	Ensemble cylindre basculage	Conjunto cilindro vuelco		

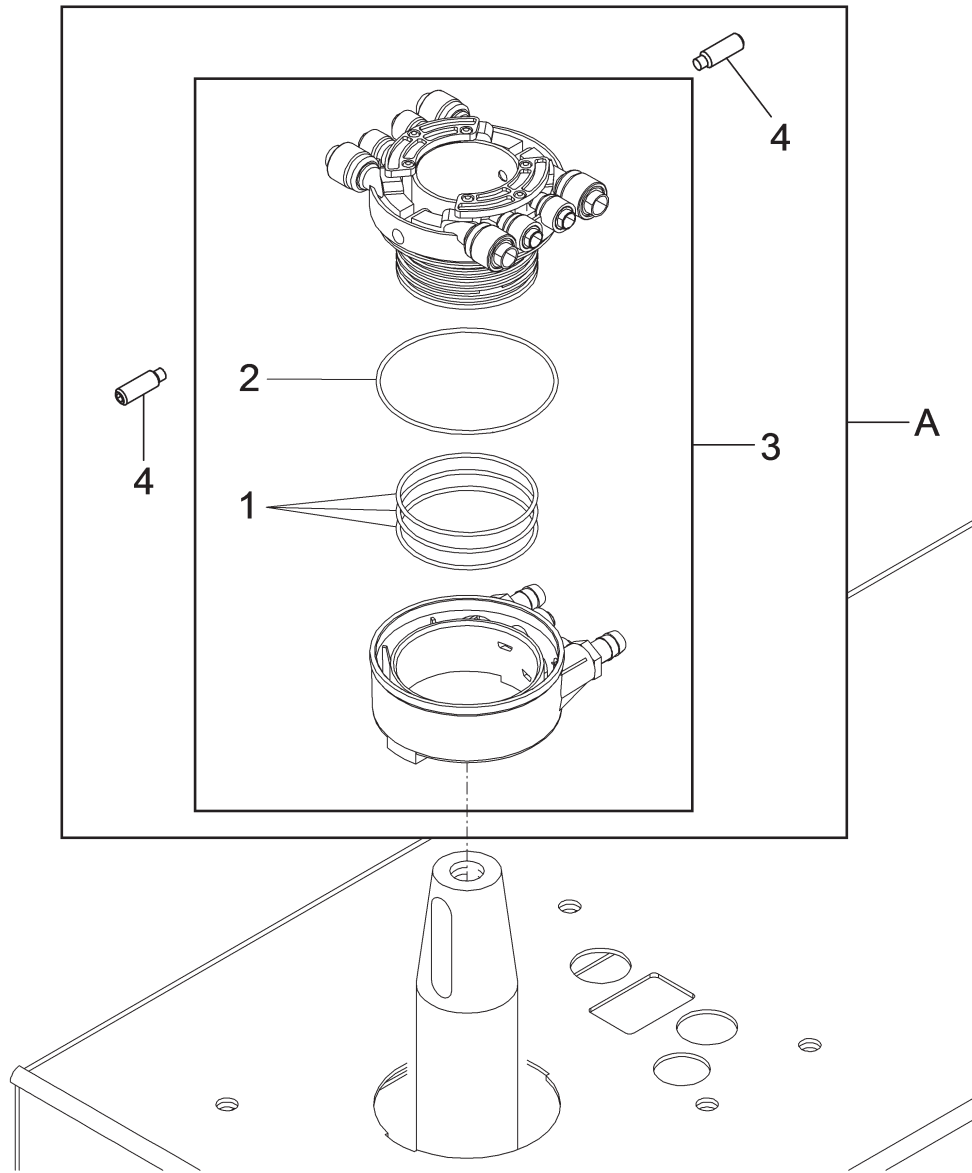


Drawing Number 8 - Rev. 3			VS730094800			→	←	10476759
#		D.R	N	Description	Description	Descripción	→	←
1	✓		VS730024690	10"-26" chuck assembly	Ensemble mandrin 10"-26	Conjunto mandril 10"-26"		
2	✓		VS243026	Clip ring Ø 75	Anneau de retenue Ø 75	Seeger Ø 75		
3	✓		VS730024600	U bolt assembly	Ensemble bride en forme de U	Conjunto brida en forma de "u"		
4	✓		VS243006	External clip ring 14 7435	Anneau de retenue extérieur 14 7435	Seeger externo 14 7435		
5	✓		VS140815322	Plate for slide guide	Plateau pour guide glissière	Placa para guía deslizadora		
6	✓		VS140816840	Spacer	Entretoise	Distanciador		
7	✓		VS730024671	Finger protection device	Dispositif protection doigts	Dispositivo protección dítos		
8	✓		VS140816230	Small hose	Tuyau petit	Tubo pequeño		
9	✓		VS730023630	Plug	Bouchon	Tapón		
10	✓		VS730094590	Slide assembly	Ensemble coulisseau	Conjunto deslizadora		
11	✓		VS730024530	Slide	Coulisseau	Deslizadora		
12	✓		VS730028490	Plate	Plaque	Placa	10411223	
13	✓		VS730093880	Jaw with points	Griffe avec pointes	Garra con puntas		
14	✓		VS730023531	Repositioner	Repositionneur	Reposicionador		
15	✓		VS730021330	Push-button	Poussoir	Pulsador		
16	✓		VS730021341	Repositioner pin	Pivot repositionneur	Perno reposicionador		
17	✓		VS730023440	Point for jaw	Pointe pour griffe	Punta para garra		
18	✓		VS918037	Compression spring 1.5X15.5X20x5	Ressort de compression 1.5X15.5X20x5	Resorte de compresión 1.5X15.5X20x5		
19	✓		VS730094600	Pneumatic cylinder	Cylindre pneumatique	Cilindro neumático		
20	✓		VSG800A6	4 protections jaws set	Ensemble 4 protections griffes	Conjunto 4 protecciones garras		
21	✓		VS321005	Complete piston	Piston complète	Pistón completo		
22	✓		VS403108	Gasket	Joint	Junta		
23	✓		VS410083	Guide ring	Anneau de guide	Anillo de guía		
24	✓		VS599095	Collar	Collier	Collar		
25	✓		VS317038	8x5.5 black Elastolan hose L=3000	Tuyau Elastolan 8x5,5 noir L=3000	Tubo Elastolan 8x5,5 negro L=3000		
26	✓		VS317021	10x8 black Elastolan hose L=3500	Tuyau Elastolan 10x8 noir L=3500	Tubo Elastolan 10x8 negro L=3500		
27	✓		VS317010	10x8 black rilsan hose L=1500	Tuyau rilsan 10x8 noir L=1500	Tubo rilsan 10x8 negro L=1500		
28	✓		VS730019290	Spacer	Entretoise	Distanciador		
29	✓		VS401174	OR	OR	OR		
30	✓		VS730019190	Driven bushing	Douille menée	Casquillo conducido		
31	✓		VSGU4870	Cylinder gasket kit D.70	Kit joint cylindre D.70	Kit junta cilindro D.70		
32	✓		VS325107	Fitting	Raccord	Empalme		
33	✓		VS730094580	Synchronizer	Synchronisation	Sincronizador		
34	✓		VS730019310	Driving bushing	Douille motrice	Casquillo motor		
35	✓		VS730070540	26" plate transformation kit repositioning 3"	Kit de transformation de plaque 26" repositionnement 3"	Kit de transformación plato 26" reposicionamiento 3"		
36	✓		VS730028940	10"-26" finger protection device	Dispositif protection doigts 10"-26"	Dispositivo protección dítos 10"-26"		
37	✓		VS730096900	Pneumatic cylinder assembly	Montage cylindre pneumatique	Montaje cilindro neumático		
38	✓		VS730095650	Slide assembly	Ensemble coulisseau	Conjunto deslizadora		

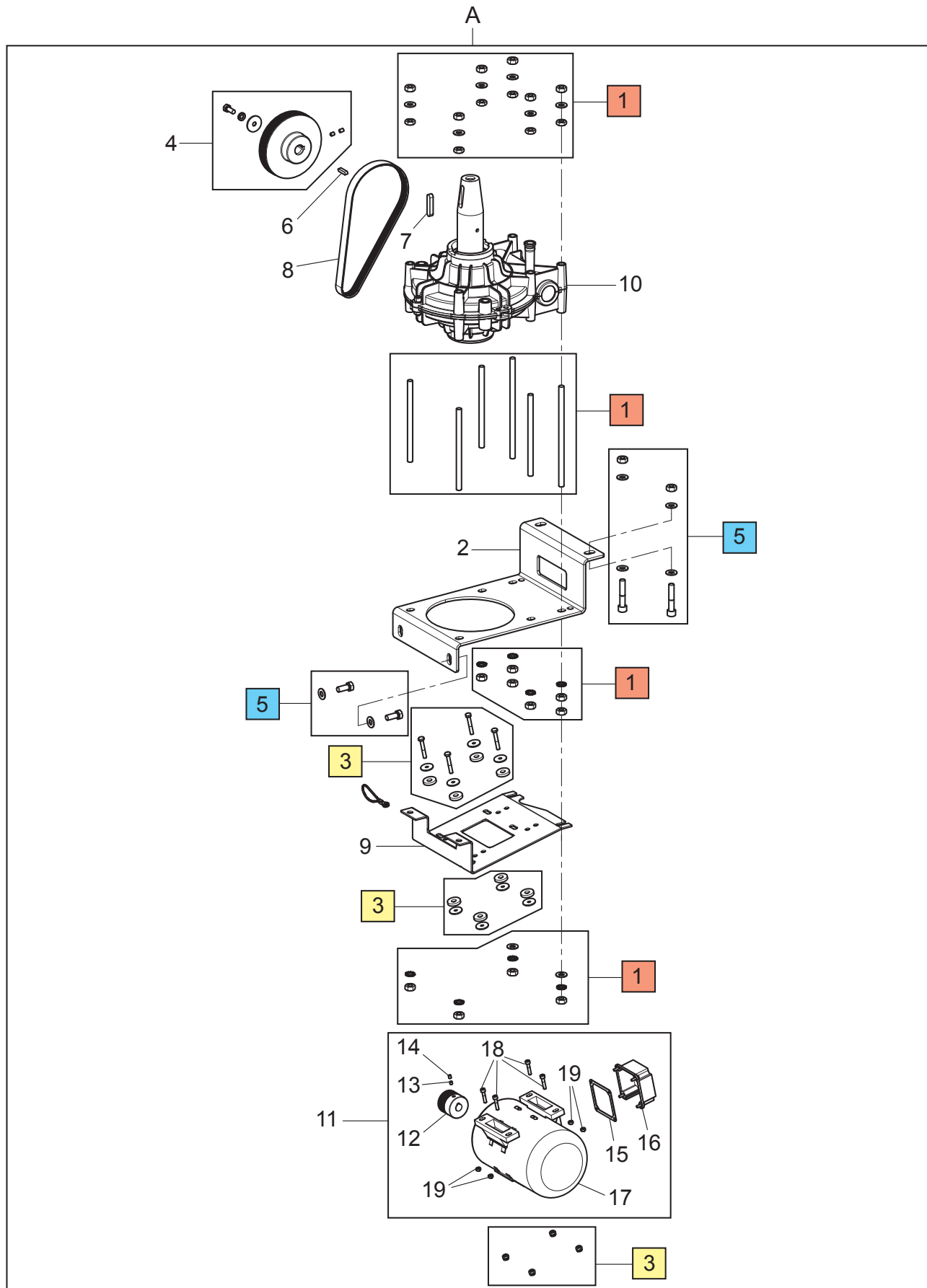
A

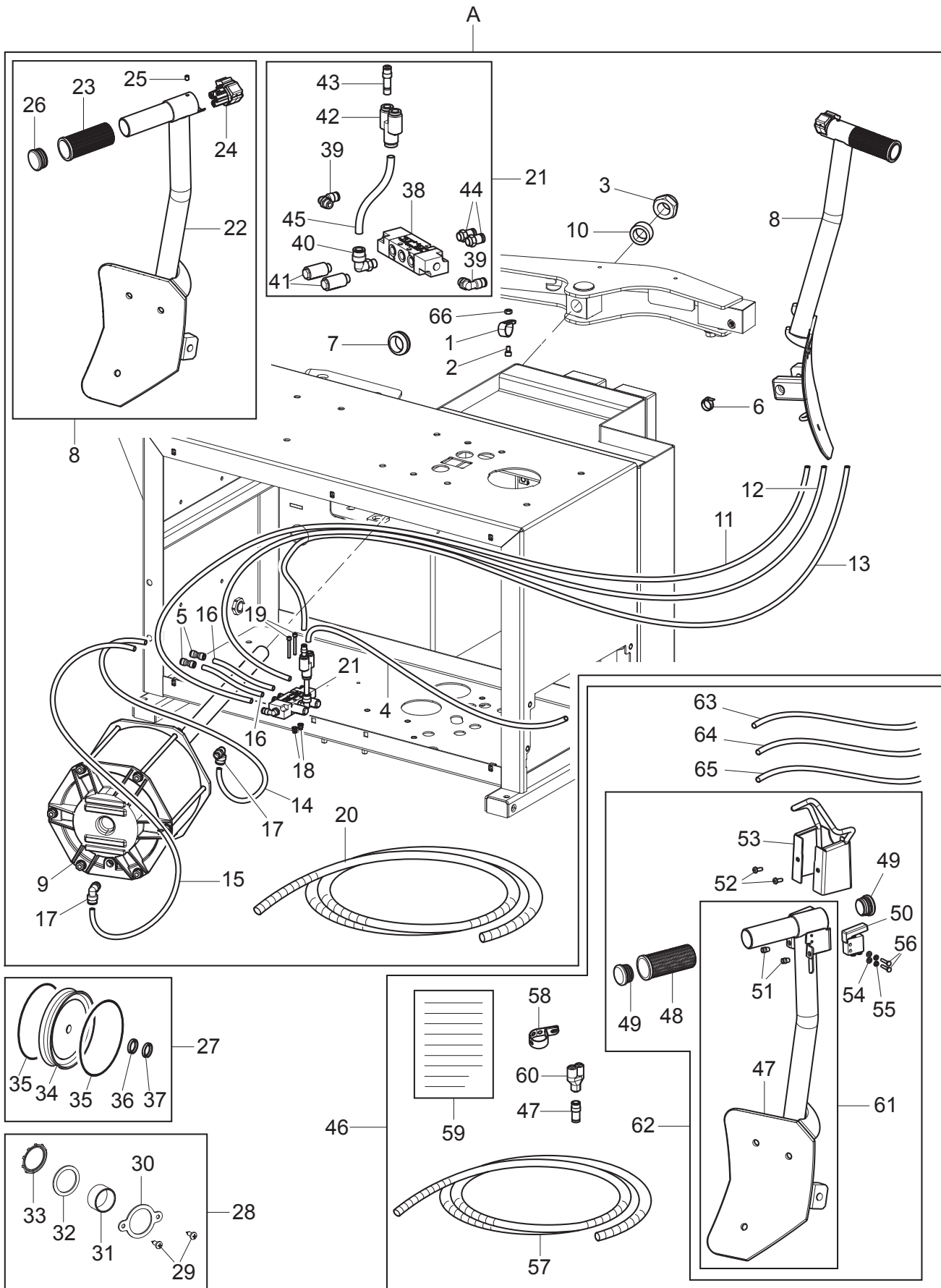


Drawing Number 8 - Rev. 4			VS730094801			10476760		
#		D.R	N	Description	Description	Descripción		
1	✓		VS140815322	Plate for slide guide	Plateau pour guide glissière	Placa para guía deslizadora		
2	✓		VS140816230	Small hose	Tuyau petit	Tubo pequeño		
3	✓		VS140816840	Spacer	Entretoise	Distanciador		
4	✓		VS203106	TE M10x35 bolt	Vis TE M10x35	Tornillo TE M10x35		
5	✓		VS236008	D.15 washer	Rondelle D.15	Arandela D. 15		
6	✓		VS236011	13 flat washer	Rondelle plane 13	Arandela plana 13		
7	✓		VS237547	75x95x1 washer	Rondelle 75x95x1	Arandela 75x95x1		
8	✓		VS238007	10.5 spring washer	Rondelle elastique 10,5	Arandela elástica 10,5		
9	✓		VS243006	External clip ring 14 7435	Anneau de retenue extérieur 14 7435	Seeger externo 14 7435		
10	✓		VS243026	Clip ring Ø 75	Anneau de retenue Ø 75	Seeger Ø 75		
11	✓		VS256256	TE M16x40 bolt	Vis TE M16x40	Tornillo TE M16x40		
12	✓		VS258258	TCEI M12x65 bolt	Vis TCEI M12x65	Tornillo TCEI M12x65		
13	✓		VS271950	Bolt	Vis	Tornillo		
14	✓		VS317010	10x8 black rilsan hose L=1400	Tuyau rilsan 10x8 noir L=1400	Tubo rilsan 10x8 negro L=1400		
15	✓		VS317021	10x8 black Elastolan hose L=1900	Tuyau Elastolan 10x8 noir L=900	Tubo Elastolan 10x8 negro L=1900		
16	✓		VS317038	8x5.5 black Elastolan hose L=2100	Tuyau Elastolan 8x5,5 noir L=2100	Tubo Elastolan 8x5,5 negro L=2100		
17	✓		VS325107	Fitting	Raccord	Empalme		
18	✓		VS401076	OR 3256	OR 3256	OR 3256		
19	✓		VS410083	Guide ring	Anneau de guide	Anillo de guía		
20	✓		VS730019190	Driven bushing	Douille menée	Casquillo conducido		
21	✓		VS730019290	Spacer	Entretoise	Distanciador		
22	✓		VS730019310	Driving bushing	Douille motrice	Casquillo motor		
23	✓		VS730023620	Locking washer	Rondelle de blocage	Arandela de bloqueo		
24	✓		VS730023630	Plug	Bouchon	Tapón		
25	✓		VS730024600	U bolt assembly	Ensemble bride en forme de U	Conjunto brida en forma de "u"		
26	✓		VS730028940	10"-26" finger protection device	Dispositif protection doigts 10"-26"	Dispositivo protección dítos 10"-26"		
27	✓		VS730024690	10"-26" chuck assembly	Ensemble mandrin 10"-26"	Conjunto mandril 10"-26"		
28	✓		VS730094580	Synchronizer	Synchronisation	Sincronizador		
29	✓		VS730095650	Slide assembly	Ensemble coulisseau	Conjunto deslizadora		
30	✓		VS730096900	Pneumatic cylinder assembly	Montage cylindre pneumatique	Montaje cilindro neumático		
31	✓		VSG800A6	4 protections jaws set	Ensemble 4 protections griffes	Conjunto 4 protecciones garras		
32			VS730026250	Welded slide	Coulisseau soudé	Deslizadora soldada		
33	✓		VS730028490	Plate	Plaque	Placa	10411223	
34	✓		VS730093880	Jaw with points	Griffe avec pointes	Garra con puntas		
35	✓		VS730023531	Repositioner	Repositionneur	Reposicionador		
36	✓		VS730021330	Push-button	Poussoir	Pulsador		
37	✓		VS730021341	Repositioner pin	Pivot repositionneur	Perno reposicionador		
38	✓		VS299081	Washer	Rondelle	Arandela		
39	✓		VS256069	TE M12x16 bolt	Vis TE M12x16	Tornillo TE M12x16		
40	✓		VS730023440	Point for jaw	Pointe pour griffe	Punta para garra		

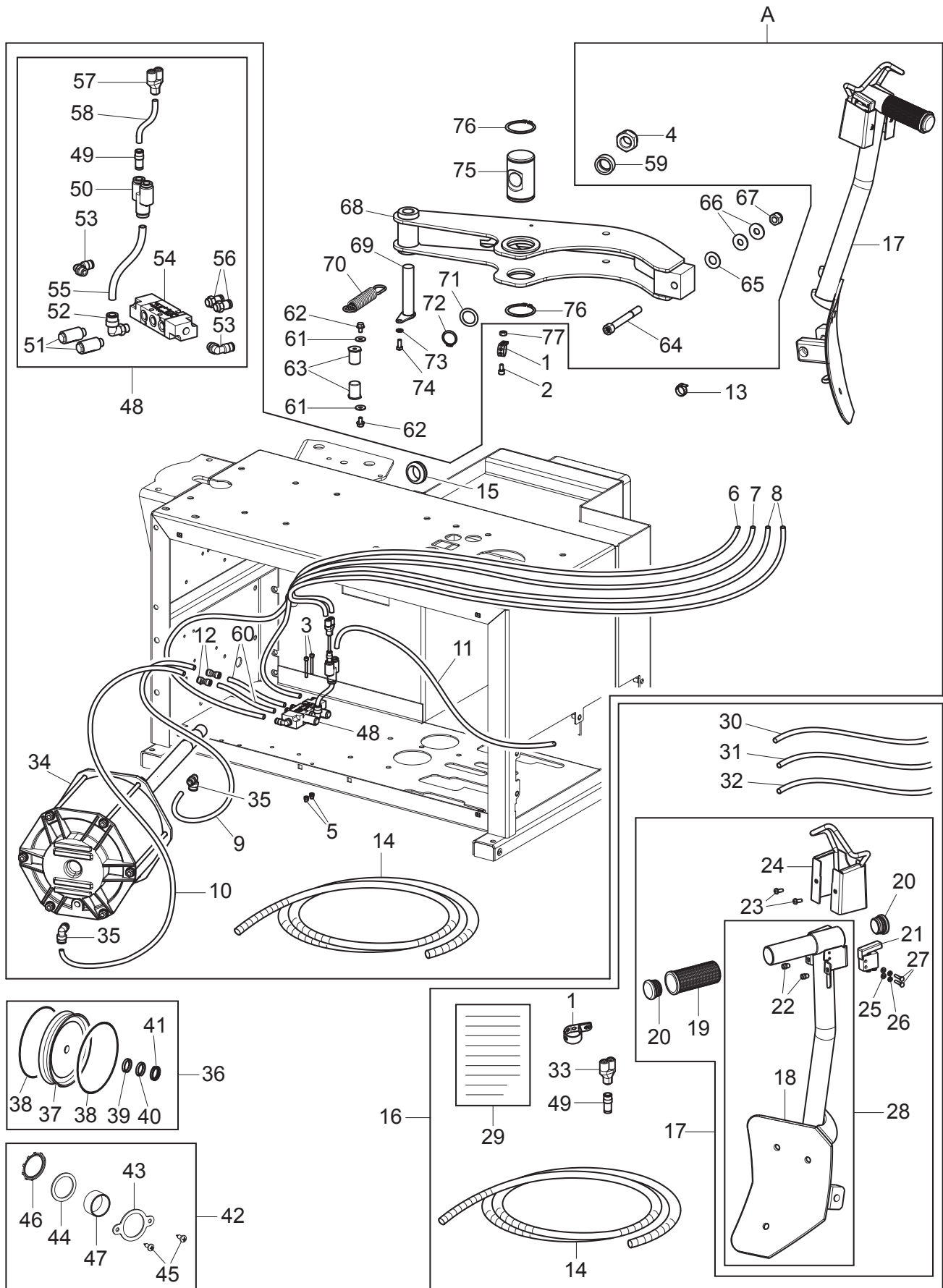


#		D.R	N	Description	Description	Descripción		
1	✓		VSB7093000	2.62 x 64.77 O-ring	Joint OR 2,62 x 64,77	Junta OR 2,62 x 64,77		
2	✓		VSB7092000	O-ring	Joint OR	Junta OR		
3	✓		VSB7095000	FI rotating fitting	Raccord pivotant FI	Empalme giratorio FI		
4	✓		VS211035	STEI M8x20 bolt	Vis STEI cylindrique M8x20	Tornillo STEI M8x20		
A	✓		VS140302093	Rotating distributor assembly	Ensemble distributeur rotatif	Conjunto distribuidor giratorio		



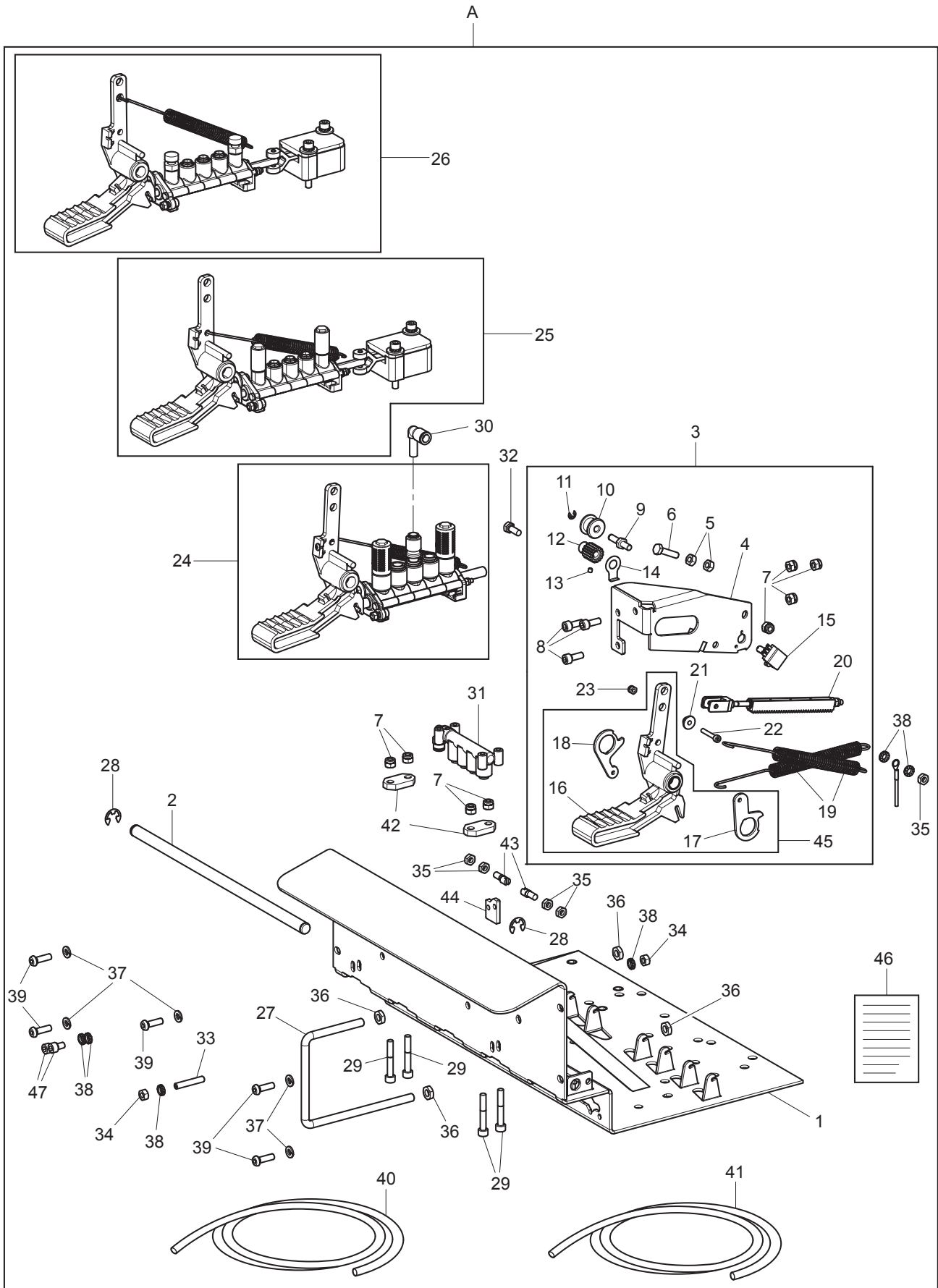


Drawing Number 11 - Rev. 2			VSG800A102			→	←	
#		D.R	N	Description	Description	Descripción	→	←
1	✓		VS B5717000	Hose clamp	Collier de serrage	Pasacable		
2	✓		VS206021	TCEI M6x20 bolt	Vis TCEI M6x20	Tornillo TCEI M6x20		
3	✓		VS228041	M22x1.5 self-locking nut	Écrou auto-bloquant M22x1,5	Tuerca autoblocante M22x1,5		
4	✓		VS317038	8x5.5 black Elastolan hose L=1000	Tuyau Elastolan 8x5,5 noir L=1000	Tube Elastolan 8x5,5 negro L=1000		
5	✓		VS325218	10x8 reduction	Réduction 10x8	Reducción 10x8		
6	✓		VS599095	Collar	Collier	Collar		
7	✓		VS599418	Rubber-made hose clamp	Guide-câble en caoutchouc	Pasacable de goma		
8	✓		VS730096650	Shovel assembly with control	Ensemble palette avec commande	Conjunto paleta con mando		10479835
9			VS730093030	Bead breaker cylinder assembly	Ensemble cylindre décolle-pneus	Conjunto cilindro destalonador		
10	✓		VS790012770	Spacer	Entretoise	Distanciador		
11	✓		VS317027	4x2.7 red rilsan hose L=2170	Tuyau rilsan 4x2,7 rouge L=2170	Tube rilsan 4x2,7 rojo L=2170		
12	✓		VS317028	4x2.7 green rilsan hose L=2170	Tuyau rilsan 4x2,7 vert L=2170	Tube rilsan 4x2,7 verde L=2170		
13	✓		VS317029	4x2.7 white rilsan hose L=2170	Tuyau rilsan 4x2,7 blanc L=2170	Tube rilsan 4x2,7 blanco L=2170		
14	✓		VS317036	10x6.5 black Elastolan hose L=600	Tuyau Elastolan 10x6,5 noir L=600	Tube Elastolan 10x6,5 negro L=600		
15	✓		VS317036	10x6.5 black Elastolan hose L=350	Tuyau Elastolan 10x6,5 noir L=350	Tube Elastolan 10x6,5 negro L=350		
16	✓		VS317007	8x6 black rilsan hose L=50	Tuyau rilsan 8x6 noir L=50	Tube rilsan 8x6 negro L=50		
17	✓		VS325107	Fitting	Raccord	Empalme		
18	✓		VS251117	Threaded insert	Renfort fileté	Inserto roscado		
19	✓		VS206363	TCEI M4x35 bolt	Vis TCEI M4x35	Tornillo TCEI M4x35		
20	✓		VS599417	Spiral wire containment cable	Spirale porte-câble	Porta-cable de espiral		
21	✓		VS730096640	Valve assembly for shovel control	Ensemble soupape pour commande palette	Conjunto válvula para mando paleta		
22	✓		VS730028590	Control shovel assembly	Ensemble palette pour commande	Conjunto paleta para mando		10479835
23	✓		VS750615050	Knob	Poignée	Pomo		
24	✓		VS B2358000	Control valve	Soupape commande	Válvula mando		
25	✓		VS213126	STEI M6x8 cup bolt	Vis STEI M6x8 flasque	Tornillo STEI M6x8 copa		
26	✓		VS B5862000	Plug	Bouchon	Tapón		
27	✓		VSGU4740	Cylinder gasket kit	Kit joint cylindre	Kit junta cilindro		
28			VS730070670	Bolts plate bushing kit	Kit douille plaquette vis	Kit casquillo placa tornillos		
29	✓		VS220063	TCB M4.2x13 bolt	Vis M4,2x13	Tornillo M4,2x13		
30	✓		VS140912061	Plate	Plaquette	Placa		
31	✓		VS630036	Self-lubricating bushing	Douille auto-lubrifiante	Casquillo autolubricante		
32	✓		VS140926220	Gasket washer	Rondelle joint	Arandela guarnición		
33	✓		VS299156	Clip ring for hole	Anneau de retenue pour trou	Seeger para hoyo		
34	✓		VS140920140	Bead-breaker gasket	Joint décolle-pneus	Junta destalonador		
35	✓		VS401196	O-ring 183.74x3.53	O-ring 183,74x3,53	O-ring 183,74x3,53		
36	✓		VS403123	Gasket	Joint	Junta		
37	✓		VS408425	Scraper	Raclette	Raspador		
38	✓		VS309113	5/3 cc valve	Soupape 5/3 cc	Válvula 5/3 cc		

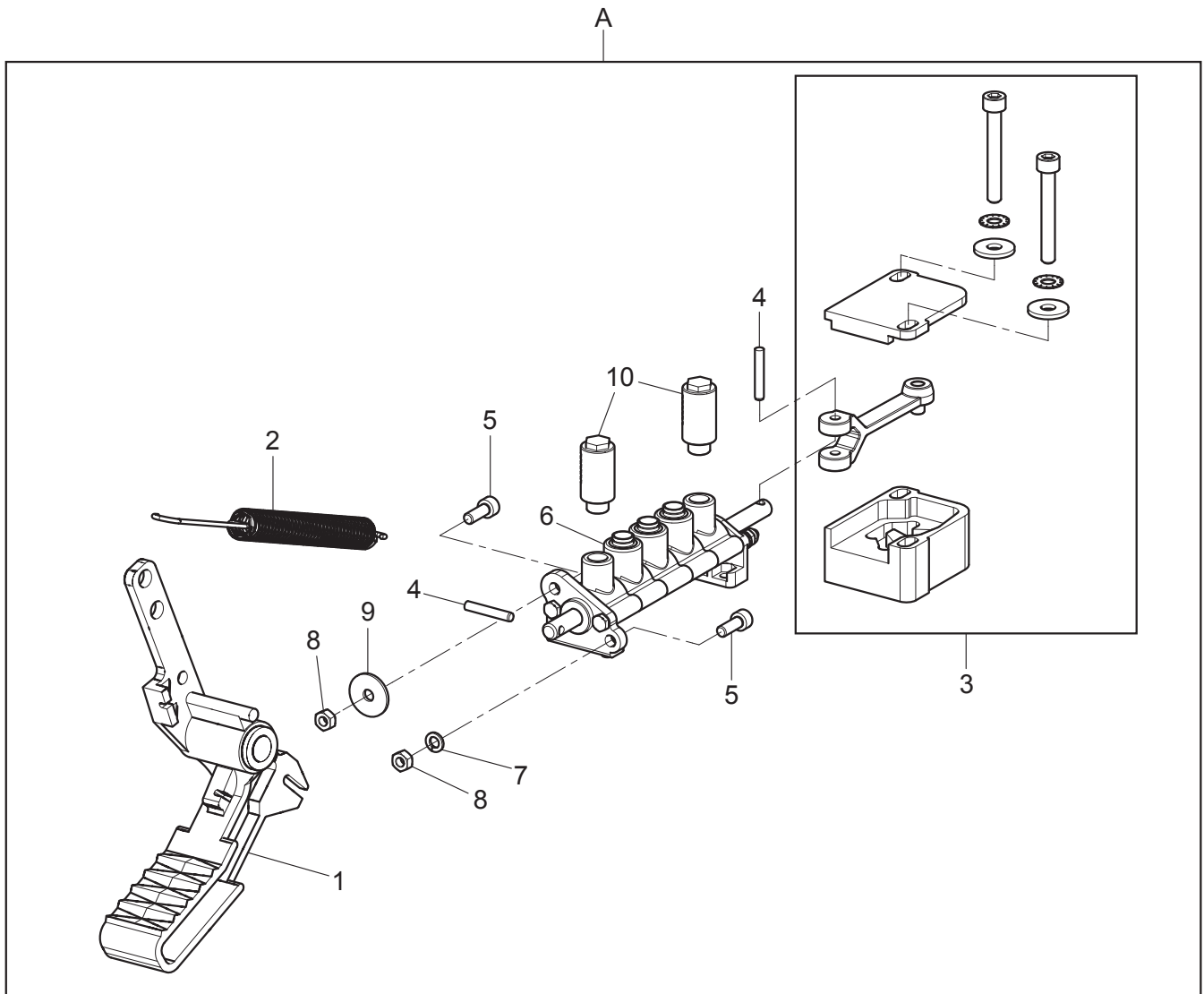


Drawing Number 11 - Rev. 3			VSG800A102			→	→	→
#		D.R	N	Description	Description	Descripción	→	→
1	✓		VS B5717000	Hose clamp	Collier de serrage	Pasacable		
2	✓		VS206021	TCEI M6x20 bolt	Vis TCEI M6x20	Tornillo TCEI M6x20		
3	✓		VS206363	TCEI M4x35 bolt	Vis TCEI M4x35	Tornillo TCEI M4x35		
4	✓		VS228041	M22x1.5 self-locking nut	Écrou auto-bloquant M22x1,5	Tuerca autoblocante M22x1,5		
5	✓		VS251113	Threaded insert	Renfort fileté	Inserto roscado		
6	✓		VS317027	4x2.7 red rilsan hose L=1820	Tuyau rilsan 4x2,7 rouge L=1820	Tubo rilsan 4x2,7 rojo L=1820		
7	✓		VS317028	4x2.7 green rilsan hose L=1820	Tuyau rilsan 4x2,7 vert L=1820	Tubo rilsan 4x2,7 verde L=1820		
8	✓		VS317029	4x2.7 white rilsan hose L=1750	Tuyau rilsan 4x2,7 blanc L=1750	Tubo rilsan 4x2,7 blanco L=1750		
9	✓		VS317036	10x6.5 black Elastolan hose L=600	Tuyau Elastolan 10x6,5 noir L=600	Tubo Elastolan 10x6,5 negro L=600		
10	✓		VS317036	10x6.5 black Elastolan hose L=350	Tuyau Elastolan 10x6,5 noir L=350	Tubo Elastolan 10x6,5 negro L=350		
11	✓		VS317038	8x5.5 black Elastolan hose L=1000	Tuyau Elastolan 8x5,5 noir L=1000	Tubo Elastolan 8x5,5 negro L=1000		
12	✓		VS325218	10x8 reduction	Réduction 10x8	Reducción 10x8		
13	✓		VS599095	Collar	Collier	Collar		
14	✓		VS599417	Spiral wire containment cable	Spirale porte-câble	Porta-cable de espiral		
15	✓		VS599418	Rubber-made hose clamp	Guide-câble en caoutchouc	Pasacable de goma		
16	✓		VS730070550	Bead breaker shovel control	Kit commande palette décolle-pneus	Kit mando paleta destalonador		
17			VS730097090	Shovel assembly with control	Ensemble palette avec commande	Conjunto paleta con mando	10479836	
18			VS730029150	Shovel assembly	Ensemble palette	Conjunto paleta	10479836	
19	✓		VS750615050	Knob	Poignée	Pomo		
20	✓		VS B5862000	Plug	Bouchon	Tapón		
21	✓		VS309149	3-2 NC 304MGN micro-valve	Microvanne 3-2 NC 304MGN	Microválvula 3-2 NC 304MGN		
22	✓		VS251118	M5 threaded insert	Renfort fileté M5	Inserto roscado M5		
23			VS271207	TBEI M5x12 bolt	Vis TBEI M5x12	Tornillo TBEI M5x12		
24			VS730028920	Cover	Couverture	Cobertura		
25	✓		VS236025	D. 4.3x9x0.8 washer	Rondelle d. 4,3x9x0,8	Arandela d. 4,3x9x0,8		
26			VS239018	4.3 toothed washer	Rondelle dentée 4,3	Arandela dentada 4,3		
27			VS203226	TE M4x20 bolt	Vis TE M4x20	Tornillo TE M4x20		
28			VS730070640	Shovel with inserts spare kit	Kit de rechange palette avec renforts	Kit repuesto paleta con insertos		
29	✓		VS730097100	Installation instructions	Instructions d'installation	Instrucciones de instalación		
30	✓		VS317027	4x2.7 red rilsan hose L=2200	Tuyau rilsan 4x2,7 rouge L=2200	Tubo rilsan 4x2,7 rojo L=2200		
31	✓		VS317028	4x2.7 green rilsan hose L=2200	Tuyau rilsan 4x2,7 vert L=2200	Tubo rilsan 4x2,7 verde L=2200		
32	✓		VS317029	4x2.7 white rilsan hose L=4400	Tuyau rilsan 4x2,7 blanc L=4400	Tubo rilsan 4x2,7 blanco L=4400		
33	✓		VS325228	Y 4 fitting	Raccord Y 4	Empalme Y 4		
34			VS730093030	Bead breaker cylinder assembly	Ensemble cylindre décolle-pneus	Conjunto cilindro destalonador		
35	✓		VS325107	Fitting	Raccord	Empalme		
36	✓		VSGU4740	Cylinder gasket kit	Kit joint cylindre	Kit junta cilindro		
37	✓		VS140920140	Bead-breaker gasket	Joint décolle-pneus	Junta destalonador		

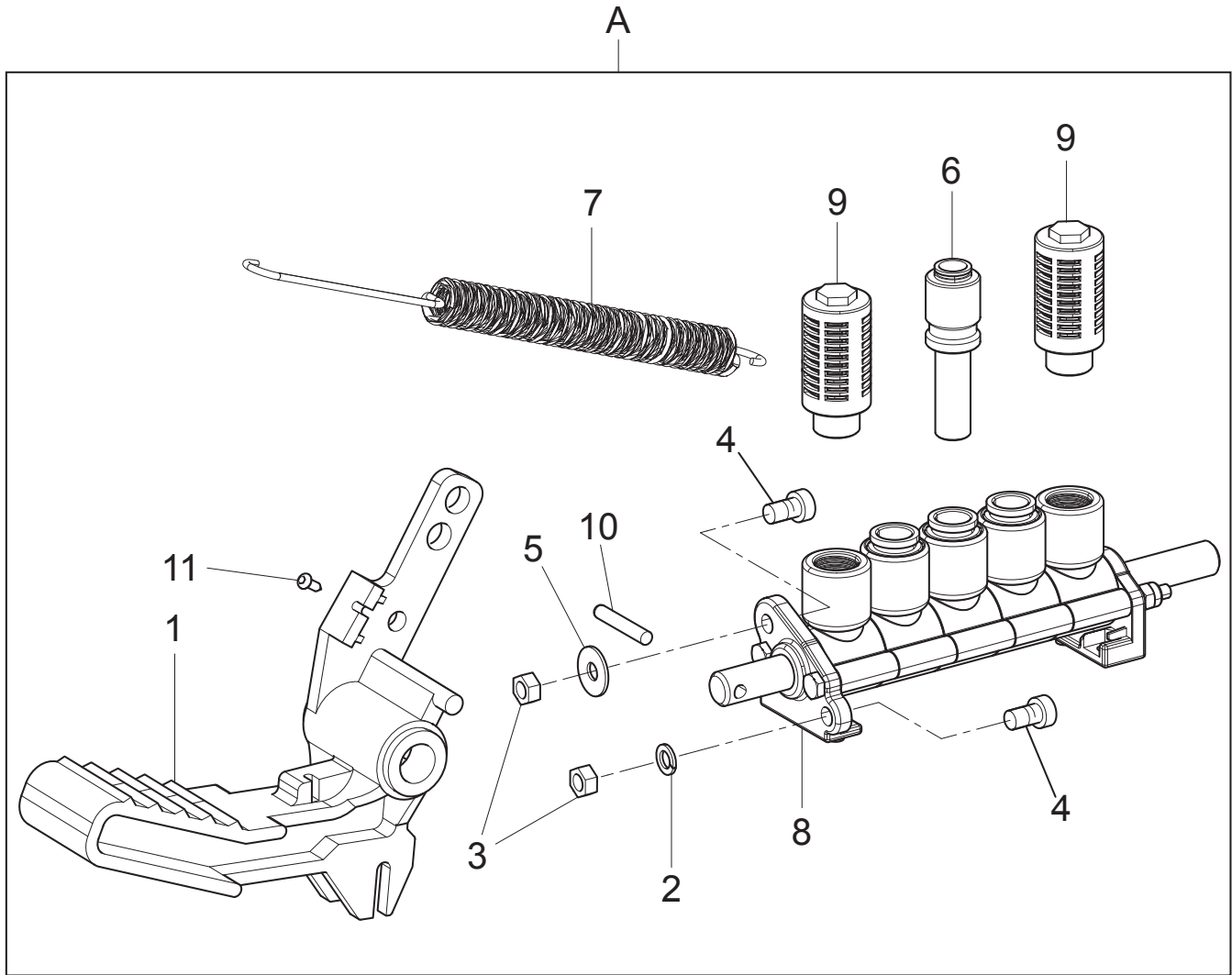
Drawing Number 11 - Rev. 3			VSG800A102			→	→	→
#		D.R	N	Description	Description	Descripción	→	→
38	✓		VS401196	O-ring 183.74x3.53	O-ring 183,74x3,53	O-ring 183,74x3,53		
39	✓		VS403123	Gasket	Joint	Junta		
40	✓		VS408425	Scraper	Raclette	Raspador		
41			VS403128DM	GSP rod gasket	Joint de tige GSP	Junta vástago GSP		
42			VS730070670	Bolts plate bushing kit	Kit douille plaquette vis	Kit casquillo placa tornillos		
43	✓		VS140912061	Plate	Plaquette	Placa		
44	✓		VS140926220	Gasket washer	Rondelle joint	Arandela guarnición		
45	✓		VS220063	TCB M4.2x13 bolt	Vis M4,2x13	Tornillo M4,2x13		
46	✓		VS299156	Clip ring for hole	Anneau de retenue pour trou	Seeger para hoyo		
47	✓		VS630036	Self-lubricating bushing	Douille auto-lubrifiante	Casquillo autolubricante		
48	✓		VS730096640	Valve assembly for shovel control	Ensemble soupape pour commande palette	Conjunto válvula para mando paleta		
49	✓		VS325193	4/8 adapter fitting	Raccord adapteur 4/8	Empalme adaptador 4/8		
50	✓		VS325181	Y8 fitting	Raccord à V8	Empalme en V8		
51	✓		VS399066	Silencer	Silencieux	Silenciador		
52	✓		VS325159	L-shaped fitting	Raccord à L	Empalme en L		
53	✓		VS325130	L-shaped rotating fitting	Raccord pivotant L	Empalme giratorio L		
54	✓		VS309113	5/3 cc valve	Soupape 5/3 cc	Válvula 5/3 cc		
55	✓		VS317007	8x6 black rilsan hose L=170	Tuyau rilsan 8x6 noir L=170	Tubo rilsan 8x6 negro L=170		
56	✓		VS325110	Fitting	Raccord	Empalme		
57	✓		VS325228	Y 4 fitting	Raccord Y 4	Empalme Y 4		
58	✓		VS317029	4x2.7 white rilsan hose L=50	Tuyau rilsan 4x2,7 blanc L=50	Tubo rilsan 4x2,7 blanco L=50		
59	✓		VS790012770	Spacer	Entretoise	Distanciador		
60	✓		VS317007	8x6 black rilsan hose L=50	Tuyau rilsan 8x6 noir L=50	Tubo rilsan 8x6 negro L=50		
61	✓		VS237011	ø6x18 flat washer	Rondelle plane ø6x18	Arandela plana ø6x18		
62	✓		VS269201	M6X10 TE self-drilling bolt	Vis TE auto-forant M6X10	Tornillo TE auto-horada M6X10		
63	✓		VS140920361	Cylinder pivot pin	Pivot point d'appui cylindre	Perno fulcro cilindro		
64	✓		VS140925901	Bolt for bead-breaker arm	Vis pour bras décolle-pneus	Tornillo para brazo destalonador		
65	✓		VS253017	Belleville washer	Ressort godet	Resorte de disco		
66	✓		VS237069	Flat washer	Rondelle plane	Arandela plana		
67	✓		VS228006	M12 self-locking nut	Écrou auto-bloquant M12	Tuerca autoblocante M12		
68	✓		VS730011591	Bead breaker arm	Bras décolle-pneus	Brazo destalonador		
69	✓		VS140320430	Arm pivot pin	Pivot point d'appui bras	Perno fulcro brazo		
70	✓		VS950020060	Arm return spring	Ressort retourne bras	Resorte vuelta brazo		
71	✓		VS237525	Shim washer	Rondelle d'épaisseur	Arandela de espesor		
72	✓		VS243013	External clip ring 25	Anneau de retenue extérieur 25	Seeger externo 25		
73	✓		VS238004	6.4 spring washer	Rondelle elastique 6,4	Arandela elástica 6,4		
74	✓		VS206012	TCEI M6x10 bolt	Vis TCEI M6x10	Tornillo TCEI M6x10		
75	✓		VS730019810	Pivot pin	Pivot point d'appui	Perno fulcro		
76	✓		VS243022	External clip ring	Anneau de retenue extérieur	Seeger externo		
77	✓		VS228010	M6 self-locking nut	Écrou auto-bloquant M6	Tuerca autoblocante M6		
A			VSG800A101	Bead breaker control on shovel	Commande décolle-pneus sur palette	Comando destalonador sobre paleta		



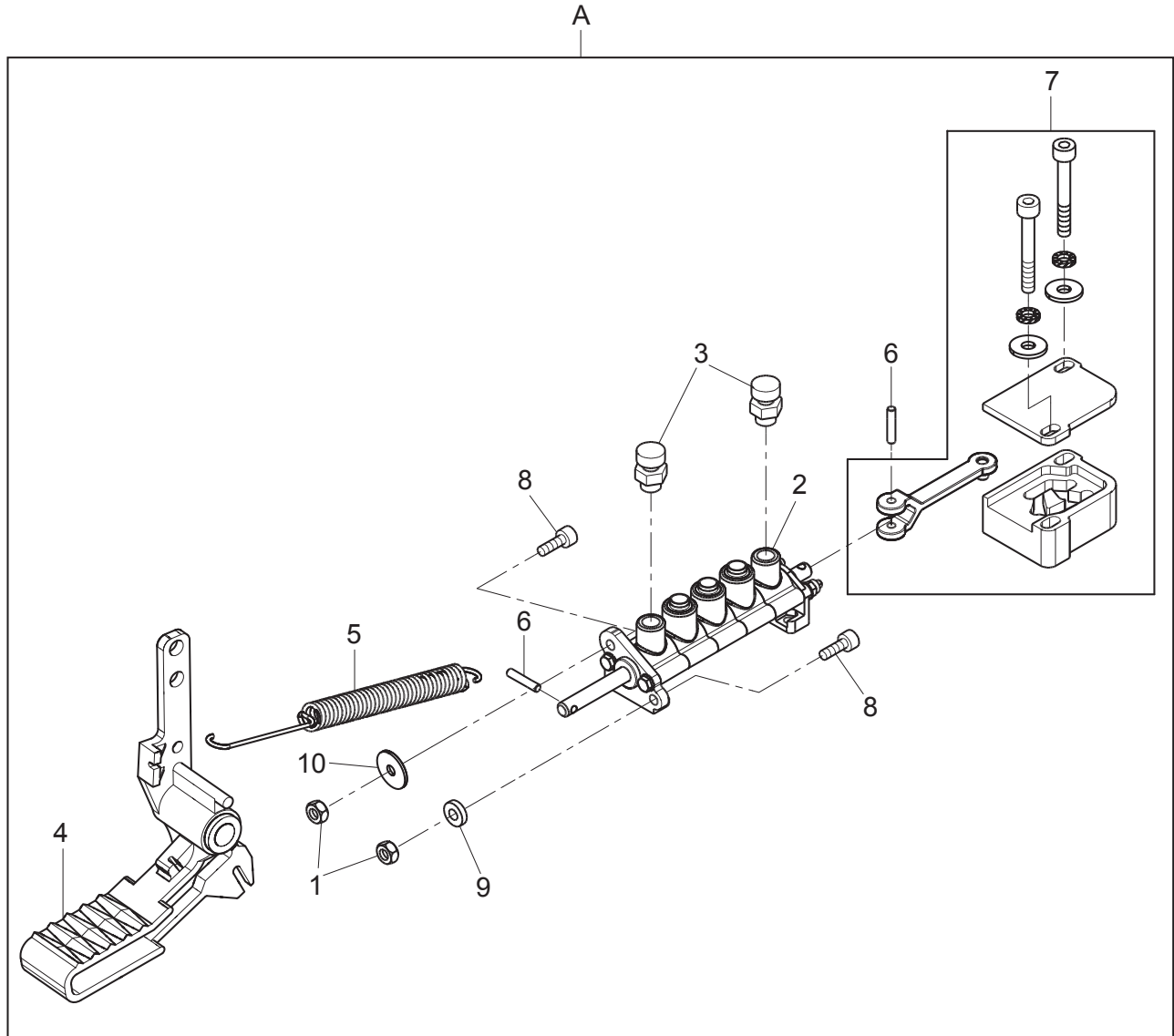
Drawing Number 12 - Rev. 2			VS730095561			→	→	
#		D.R	N	Description	Description	Description	→	→
1			VS730071140	Pedalboard assembly with inserts	Ensemble pédalier avec renforts	Conjunto pedalera con insertos		
2	✓		VS140915170	Pedals pivot pin	Pivot point d'appui pédales	Perno fulcro pedales		
3			VS730096820	Pedal assembly with inverter	Ensemble pédale avec inverseur	Conjunto pedal con in-versor		
4	✓		VS730028790	Potentiometer support	Support potentiomètre	Soporte potenciómetro		
5	✓		VS224007	M6 med nut	Écrou moyen M6	Tuerca media M6		
6			VS203127	TE M6x25 bolt	Vis TE M6x25	Tornillo TE M6x25		
7	✓		VS228010	M6 self-locking nut	Écrou auto-bloquant M6	Tuerca autoblocante M6		
8	✓		VS206019	TCEI M6x16 bolt	Vis TCEI M6x16	Tornillo TCEI M6x16		
9	✓		VSB3934000	Pin for roller	Pivot pour rouleau	Perno para rodillo		
10	✓		VSB3837000	Rack roller	Rouleau cremaillère	Rodillo cremallera		
11	✓		VS299042	D.4 stopper ring	Anneau d'arrêt D.4	Anillo de seguro D.4		
12	✓		VS730011050	D.17 pinion gear	Pignon D.17	Piñon D.17		
13	✓		VS213485	STEI M4x4 bolt	Vis STEI M4x4	Tornillo STEI M4x4		
14	✓		VS790011970	Safety washer	Rondelle de sécurité	Arandela de seguridad		
15	✓		VS710565010	Cable and potentiometer	Câble et potentiomètre	Cable y potenciómetro		
16	✓		VS730091391	Pedal with bushings	Pédale avec douilles	Pedal con casquillos		
17	✓		VS730017980	Cam	Came	Leva		
18	✓		VS730017990	Cam	Came	Leva		
19	✓		VS950001720	Inverter spring	Ressort inverseur	Resorte inversor		
20	✓		VS730091040	Rack	Cremaillère	Cremallera		
21	✓		VS730012310	Plug nut	Pastille	Pastilla		
22			VS206231	TCEI M4x25 bolt	Vis TCEI M4x25	Tornillo TCEI M4x25		
23	✓		VS228023	M4 self-locking nut	Écrou auto-bloquant M4	Tuerca autoblocante M4		
24	✓	14.2	VS140990391	Bead breaker pedal assembly	Ensemble pédale décolle-pneus	Conjunto pedal destalo-nador		
25	✓	13.2	VS140990401	Chuck pedal assembly	Ensemble pédale mandrin	Conjunto pedal mandril		
26	✓	15.2	VS140990431	Pedal assembly	Ensemble pédal	Conjunto pedal		
27	✓		VS140910280	Pedal partition	Diviseur pédales	Divisor pedales		
28	✓		VS299052	D.9 stopper ring	Anneau d'arrêt D.9	Anillo de seguro D.9		
29	✓		VS206094	TCEI M6x40 bolt	Vis TCEI M6x40	Tornillo TCEI M6x40		
30	✓		VS325186	8-8 L pneumatic fixed fitting	Raccord pneumatique L fixe 8-8	Empalme neumático en L fijo 8-8		
31	✓		VSB2850001	5-way block	Petit block à 5 voies	Bloque a 5 vias		
32			VS203019	TE M6x16 bolt	Vis TE M6x16	Tornillo TE M6x16		
33			VS210093	M6x35 STEI flat bolt	Vis STEI plane M6x35	Tornillo STEI plana M6x35		
34	✓		VS224007	M6 med nut	Écrou moyen M6	Tuerca media M6		
35	✓		VS226007	M6 jam nut	Écrou bas M6	Tuerca baja M6		
36	✓		VS226009	M8 jam nut	Écrou bas M8	Tuerca baja M8		
37	✓		VS238004	6.4 spring washer	Rondelle elastique 6,4	Arandela elástica 6,4		
38	✓		VS239019	6.4 toothed washer	Rondelle dentée 6,4	Arandela dentada 6,4		
39	✓		VS271021	TBEI M6x20 bolt	Vis TBEI M6x20	Tornillo TBEI M6x20		
40	✓		VS317007	8x6 black rilsan hose L=7500	Tuyau rilsan 8x6 noir L=7500	Tubo rilsan 8x6 negro L=7500		
41	✓		VS317010	10x8 black rilsan hose L=2300	Tuyau rilsan 10x8 noir L=2300	Tubo rilsan 10x8 negro L=2300		



#		D.R	N	Description	Description	Descripción		
1			VS140915032	Pedal	Pédale	Pedal		
2	✓		VS950001720	Inverter spring	Ressort inverseur	Resorte inversor		
3	✓		VS140998041	Lever cam kit for pedal-board	Kit came levier pour pedaliar	Kit leva palanca para pedalera		
4	✓		VS234036	Cylindrical pin	Goupille cylindrique	Clavija cilíndrica		
5	✓		VS206007	TCEI M5x14 bolt	Vis TCEI M5x14	Tornillo TCEI M5x14		
6	✓		VS140998071	Chuck distributor assembly	Ensemble distributeur mandrin	Conjunto distribuidor mandril		
7	✓		VS238026	Spring washer	Rondelle élastique	Arandela elástica		
8	✓		VS224005	M5 med nut	Écrou moyen M5	Tuerca media M5		
9	✓		VS237010	5x20x1.5 washer	Rondelle 5x20x1,5	Arandela 5x20x1,5		
10	✓		VS399066	Silencer	Silencieux	Silenciador		
A	✓		VS140990401	Chuck pedal assembly	Ensemble pédale mandrin	Conjunto pedal mandril		



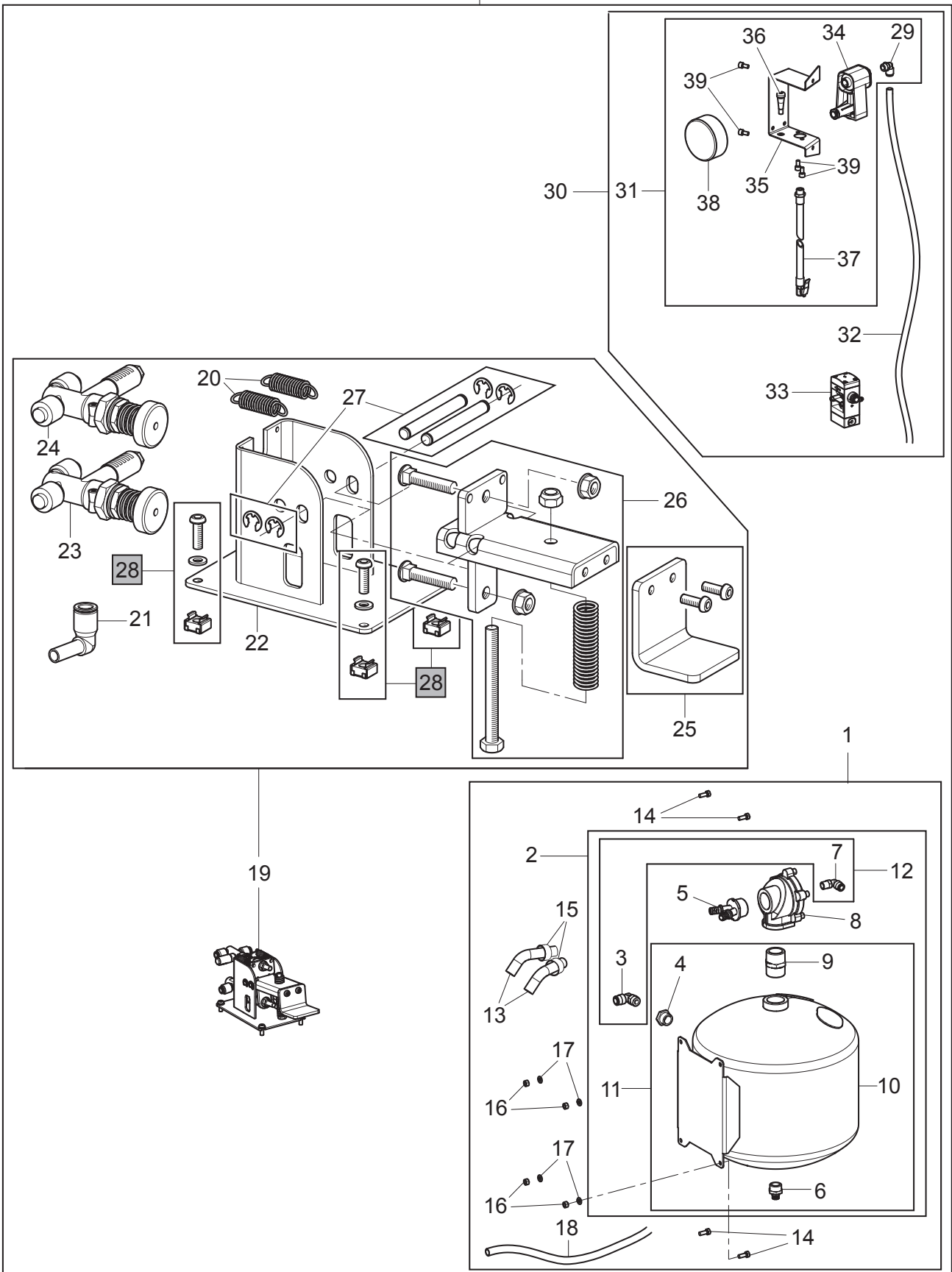
#		D.R	N	Description	Description	Descripción		
1	✓		VS140915032	Pedal	Pédale	Pedal		
2	✓		VS238026	Spring washer	Rondelle élastique	Arandela elástica		
3	✓		VS224005	M5 med nut	Écrou moyen M5	Tuerca media M5		
4	✓		VS206007	TCEI M5x14 bolt	Vis TCEI M5x14	Tornillo TCEI M5x14		
5	✓		VS237010	5x20x1.5 washer	Rondelle 5x20x1,5	Arandela 5x20x1,5		
6	✓		VS325227	10-8 reduction	Réduction 10-8	Reducción 10-8		
7	✓		VS950001720	Inverter spring	Ressort inverseur	Resorte inversor		
8	✓		VS730091710	Bead breaker valve assembly	Ensemble soupape décolle-pneus	Conjunto válvula destalonador		
9	✓		VS399064	1/4" silencer	Silencieux 1/4"	Silenciador 1/4"		
10	✓		VS234036	Cylindrical pin	Goupille cylindrique	Clavija cilíndrica		
11	✓		VS220042	3.5x6.5 TCB bolt	Vis TCB 3,5x6,5	Tornillo TCB 3,5x6,5		
A	✓		VS140990391	Bead breaker pedal assembly	Ensemble pédale décolle-pneus	Conjunto pedal destalonador		



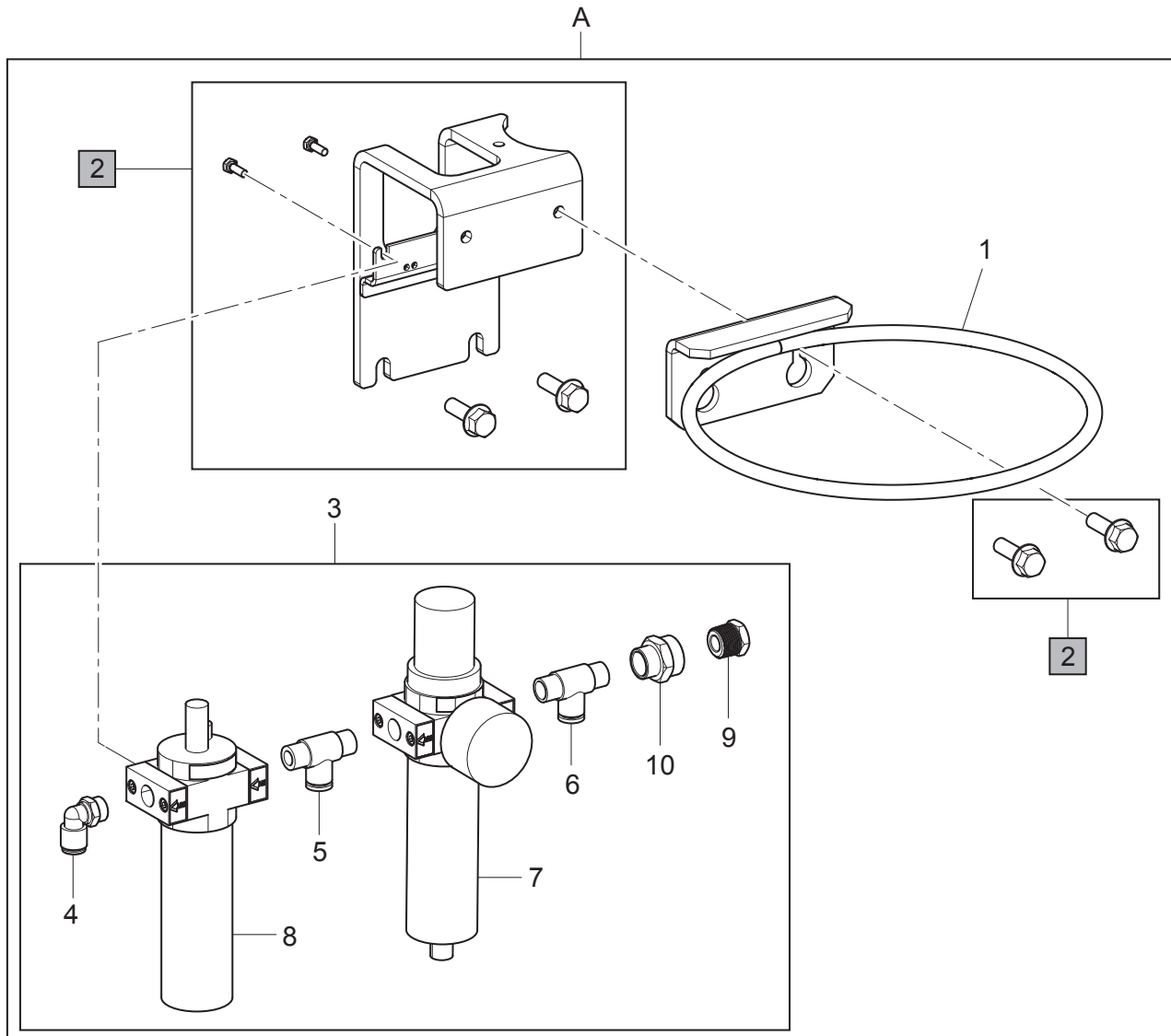
#		D.R	N	Description	Description	Descripción		
1	✓		VS224005	M5 med nut	Écrou moyen M5	Tuerca media M5		
2	✓		VS140998062	Tilting distributor assembly	Ensemble distributeur renversement	Conjunto distribuidor vuelco		
3	✓		VS399264	1/8" adjustable silencer	Silencieux réglable 1/8"	Silenciador regulable 1/8"		
4			VS140915032	Pedal	Pédale	Pedal		
5	✓		VS950001720	Inverter spring	Ressort inverseur	Resorte inversor		
6	✓		VS234036	Cylindrical pin	Goupille cylindrique	Clavija cilíndrica		
7	✓		VS140998041	Lever cam kit for pedal-board	Kit came levier pour pedalier	Kit leva palanca para pedalera		
8	✓		VS206007	TCEI M5x14 bolt	Vis TCEI M5x14	Tornillo TCEI M5x14		
9	✓		VS238026	Spring washer	Rondelle élastique	Arandela elástica		
10	✓		VS237010	5x20x1.5 washer	Rondelle 5x20x1,5	Arandela 5x20x1,5		
A	✓		VS140990431	Pedal assembly	Ensemble pédal	Conjunto pedal		



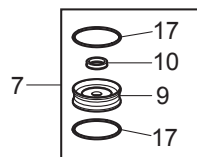
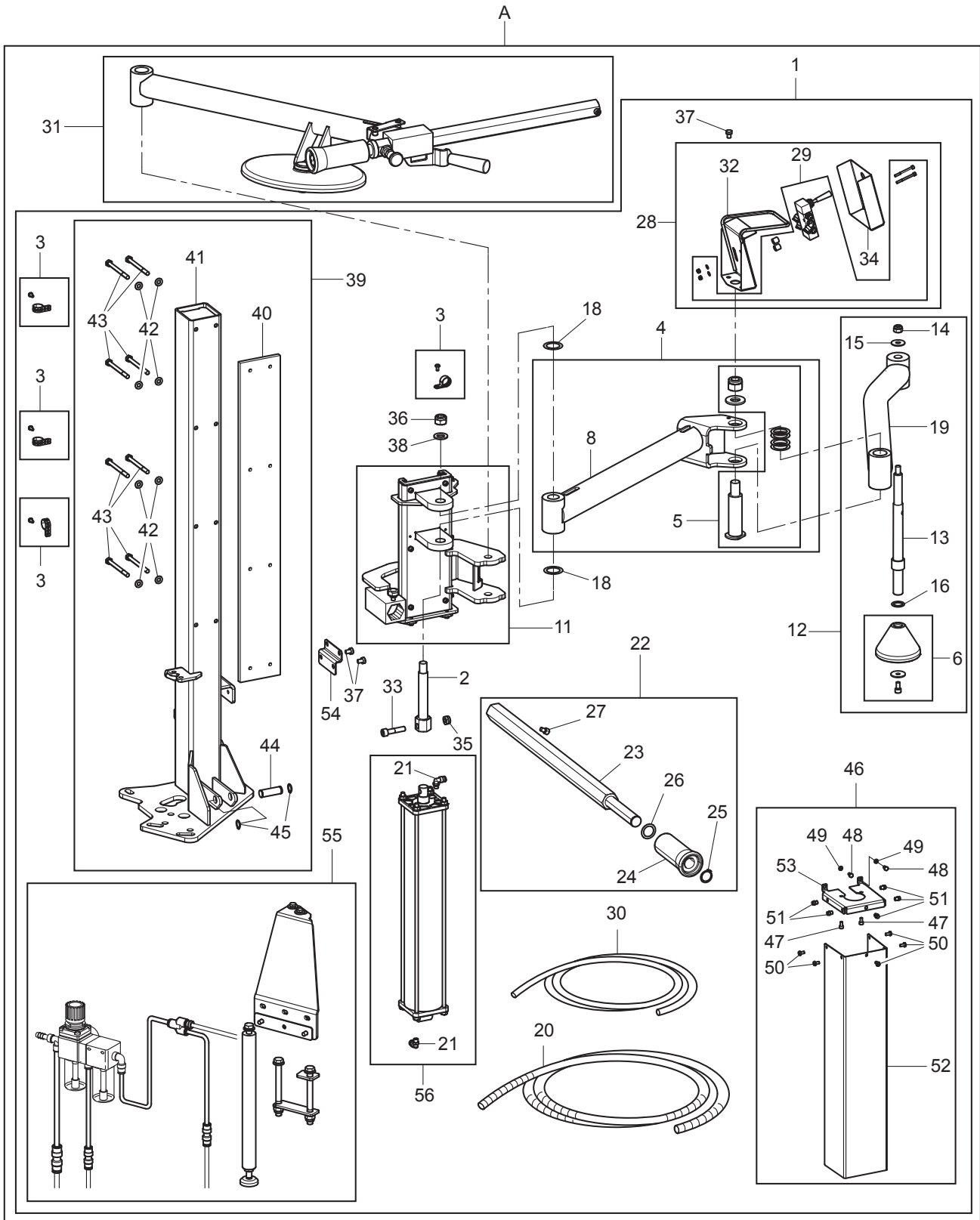
A



Drawing Number 16 - Rev. 0								
#		D.R	N	Description	Description	Description		
1	✓		VS730095030	Air tank assembly	Ensemble réservoir air	Conjunto tanque aire		
2	✓		VS730095150	Tank assembly	Ensemble réservoir	Conjunto tanque		
3	✓		VS325141	Rotating fitting	Raccord pivotant	Empalme giratorio		
4	✓		VS310106	1-2M x 3-8F reduction	Réduction 1-2M x 3-8F	Reducción 1-2M x 3-8F		
5	✓		VS730016760	Y-shaped fitting	Raccord à Y	Empalme en Y		
6	✓		VSB1175900	1/2" Release cock	Robinet décharge 1/2"	Llave descarga 1/2"		
7	✓		VS325031	Rotating fitting	Raccord pivotant	Empalme giratorio		
8	✓		VS309095	Blow valve	Soupape de soufflage	Válvula di soplado		
9	✓		VSB1202700	M-M1" nipple fitting	Raccord mamelon M-M1"	Empalme niple M-M1"		
10	✓		VS790010750	ASME tank	Réservoir ASME	Tanque ASME		
11	✓		VS710570140	Tank spare kit	Kit de rechange réservoir	Kit repuesto tanque		
12	✓		VS730071120	Fittings kit	Kit de raccords	Kit empalmes		
13	✓		VS318011	Screened hose	Tuyau retiné	Tubo retinado		
14			VS203019	TE M6x16 bolt	Vis TE M6x16	Tornillo TE M6x16		
15	✓		VS319012	Clamp	Collier	Abrazadera		
16	✓		VS224007	M6 med nut	Écrou moyen M6	Tuerca media M6		
17	✓		VS238004	6.4 spring washer	Rondelle elastique 6,4	Arandela elástica 6,4		
18	✓		VS317010	10x8 black rilsan hose	Tuyau rilsan 10x8 noir	Tubo rilsan 10x8 negro		
19	✓		VS140990371	Tubeless inflation pedal-board	Ensemble pédalier de gonflage tubeless	Pedaler de inflado tubeless		
20	✓		VS918006	1.8x12x40.4 TRZ spring	Ressort TRZ 1,8x12x40,4	Resorte TRZ 1,8x12x40,4		
21	✓		VS325186	8-8 L pneumatic fixed fitting	Raccord pneumatique L fixe 8-8	Empalme neumático en L fijo 8-8		
22	✓		VSB4103200	Painted pedal support	Support pédales peint	Soporte pedales pintado		
23	✓		VSB7076001	Motor valve	Soupape moteur	Válvula motor		
24	✓		VSB7075001	Bead-breaker valve	Soupape décolle-pneus	Válvula destalonador		
25	✓		VS790070720	Pedal kit and bolts	Kit pédale et vis	Kit pedal y tornillos		
26	✓		VS790070750	Inflation pedal kit	Kit pédale de gonflage	Kit pedal de inflado		
27	✓		VS790070740	Inflation pedal pin kit	Kit pivot pédale de gonflage	Kit perno pedal de inflado		
28	✓		VS790070710	Pedal fasteners kit	Kit fixation pédale	Kit sujeción pedal		
29	✓		VS325118	Rotating fitting	Raccord pivotant	Empalme giratorio		
30	✓		VS730097340	Inflation assembly	Ensemble gonflage	Conjunto inflado		
31	✓		VS730097330	Pressure gage support assembly	Ensemble support manomètre	Conjunto soporte manómetro		
32	✓		VS317007	8x6 black rilsan hose L=3500	Tuyau rilsan 8x6 noir L=3500	Tubo rilsan 8x6 negro L=3500		
33	✓		VS710590670	60 PSI inflation valve assembly	Ensemble soupape de gonflage 60 PSI	Conjunto válvula de inflado 60 PSI		
34	✓		VSB9055001	Man+discharge support	Support man+décharge	Soporte man+descarga		
35			VSB1166100	Pressure gage support	Support manomètre	Soporte manómetro		
36	✓		VSB7204000	Tire valve	Soupape pour pneu	Válvula de neumático		
37	✓		VSB1600000	Inflation hose L=1500	Tuyau de gonflage L=1500	Tubo de inflado L=1500		
38	✓		VSB7026001	D.80 (80 psi) pressure gage	Manomètre D.80 (80 psi)	Manómetro D.80 (80 psi)		
39	✓		VS206188	TCEI M6x12 bolt	Vis TCEI M6x12	Tornillo TCEI M6x12		
A			-	Inflation assembly	Ensemble gonflage	Conjunto inflado		



#		D.R	N	Description	Description	Descripción		
1	✓		VSB0223000	Grease holder ring	Anneau cuve porte-graisse	Anillo porta grasa		
2	✓		VS730070750	Air treatment assembly support kit + bolts	Kit support ensemble traitement air + vis	Kit conjunto tratamiento de aire + tornillos		
3	✓		VS730097150	Pressure reducer filter with fittings assembly	Ensemble filtre réducteur de pression avec raccords	Conjunto de filtro reductor de presión con empalmes		
4	✓		VS325118	Rotating fitting	Raccord pivotant	Empalme giratorio		
5	✓		VS325148	T middle fitting	Raccord intermédiaire T	Empalme intermedio T		
6	✓		VS325203	T-shaped fitting	Raccord à T	Empalme en T		
7	✓		VS399319	Filter assembly	Ensemble filtre	Conjunto filtro		
8	✓		VS399320	Lubricator filter assembly	Ensemble filtre lubrificateur	Conjunto filtro lubricador		
9			VS312174	4NPT reduction	Réduction 4NPT	Reducción 4NPT		
10			VS312173	Reduction sleeve 1/4-3/8	Manchon de réduction 1/4-3/8	Manguito de reducción 1/4-3/8		
A	✓		VS730097140	Greaser reduction gear filter air treatment assembly + hose nipple	Ensemble traitement air filtre réducteur lubrificateur + porte-tuyau	Conjunto tratamiento aire filtro reductor lubricador + porta-goma		

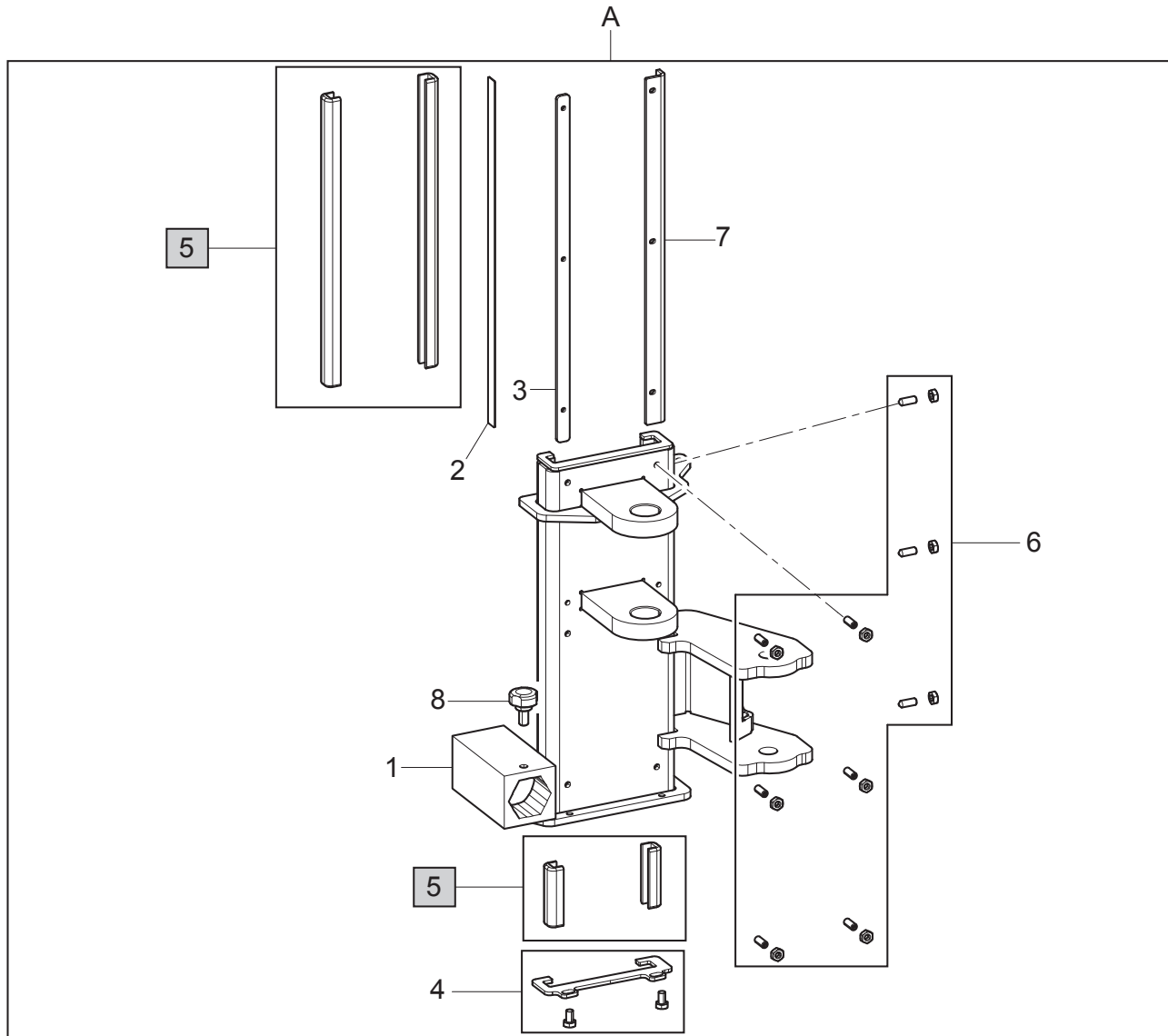


Drawing Number 18 - Rev. 2			PLUS83VSC			→	←	
#		D.R	N	Description	Description	Descripción	→	←
1			PLUS83	Pneumatic bead press/lift device	Dispositif pousse-lève pneu	Dispositivo presiona-levantatalón neumático		
2			VS770714200	Centering pin	Pivot de centrage	Perno de centrage		
3				Clamps kit	Kit colliers	Kit abrazaderas		
4			VS770790103	Wedge support arm	Bras support cale	Brazo soporte cuña		
5			VS730071090	Pin kit	Kit pivot	Kit perno		
6			VS770770250	Pusher cone kit	Kit cône presseur	Kit cono prensador		
7	✓		VSGU6130	Cylinder gasket kit D.80	Kit joint cylindre D.80	Kit junta cilindro D.80		
8			VS770710302	Wedge support arm	Bras support cale	Brazo soporte cuña		
9	✓		VS321024	Piston 80-78	Piston 80-78	Pistón 80-78		
10	✓		VS403123	Gasket	Joint	Junta		
11	✓	19.1	VS770790621	Arms support	Support bras	Soporte brazos		
12			VS770790321	Pusher arm assembly	Ensemble bras presseur	Conjunto brazo prensador		
13	✓		VS770714220	Rod for pusher	Tige pour presseur	Vástago para prensador		
14	✓		VS228012	M10 self-locking nut	Écrou auto-bloquant M10	Tuerca autoblocante M10		
15	✓		VS237043	10x30x2.5 flat washer	Rondelle plane 10x30x2,5	Arandela plana 10x30x2,5		
16			VS237563	20x30x2 washer	Rondelle 20x30x2	Arandela 20x30x2		
17			VS401250	O-ring	Joint OR	Junta OR		
18	✓		VS237510	D.20 shim washer	Rondelle d'épaisseur D.20	Arandela de espesor D.20		
19			VS770711671	Pusher arm	Bras presseur	Brazo prensador		
20	✓		VS599417	Spiral wire containment cable	Spirale porte-câble	Porta-cable de espiral		
21	✓		VS325178	Fitting	Raccord	Empalme		
22			VS770790660	Hexagonal arm	Bras hexagonal	Brazo hexagonal		
23			VS770713310	Roller holder hex-nut	Hexagone porte-rouleau	Hexágono porta rodillo		
24	✓		VS140841360	Roller	Rouleau	Rodillo		
25	✓		VS243013	External clip ring 25	Anneau de retenue extérieur 25	Seeger externo 25		
26	✓		VS237511	Shim washer	Rondelle d'épaisseur	Arandela de espesor		
27			VS203129	TE M8x12 bolt	Vis TE M8x12	Tornillo TE M8x12		
28	✓		VS770790310	Valve control	Commande soupape	Comando válvula		
29	✓		VS770770270	Valve kit and fasteners	Kit soupape et fixations	Kit válvulas y fijaciones		
30	✓		VS317006	6x4 black rilsan hose L=7500	Tuyau rilsan 6x4 noir L=7500	Tubo rilsan 6x4 negro L=7500		
31		21.1	VSG800A129	Lift roller arm + cylindrical roll	Bras rouleau élévateur + rouleau cylindrique	Brazo rodillo elevador + rodillo cilíndrico		
32	✓		VS770710651	Valve guard	Carter soupape	Cárter válvula		
33			VS206064	TCEI M10x45 bolt	Vis TCEI M10x45	Tornillo TCEI M10x45		
34	✓		VS770711881	Plus valve guard	Carter soupape	Cárter válvula Plus		
35	✓		VS228022	M10 jam self-locking nut	Écrou auto-bloquant bas M10	Tuerca autoblocante baja M10		
36	✓		VS228040	M16 self-locking nut	Écrou auto-bloquant M16	Tuerca autoblocante M16		
37			VS203028	TE M8x10 bolt	Vis TE M8x10	Tornillo TE M8x10		
38	✓		VS236020	17 flat washer	Rondelle plane 17	Arandela plana 17		
39			VS770790591	Column assembly	Ensemble colonne	Conjunto columna		

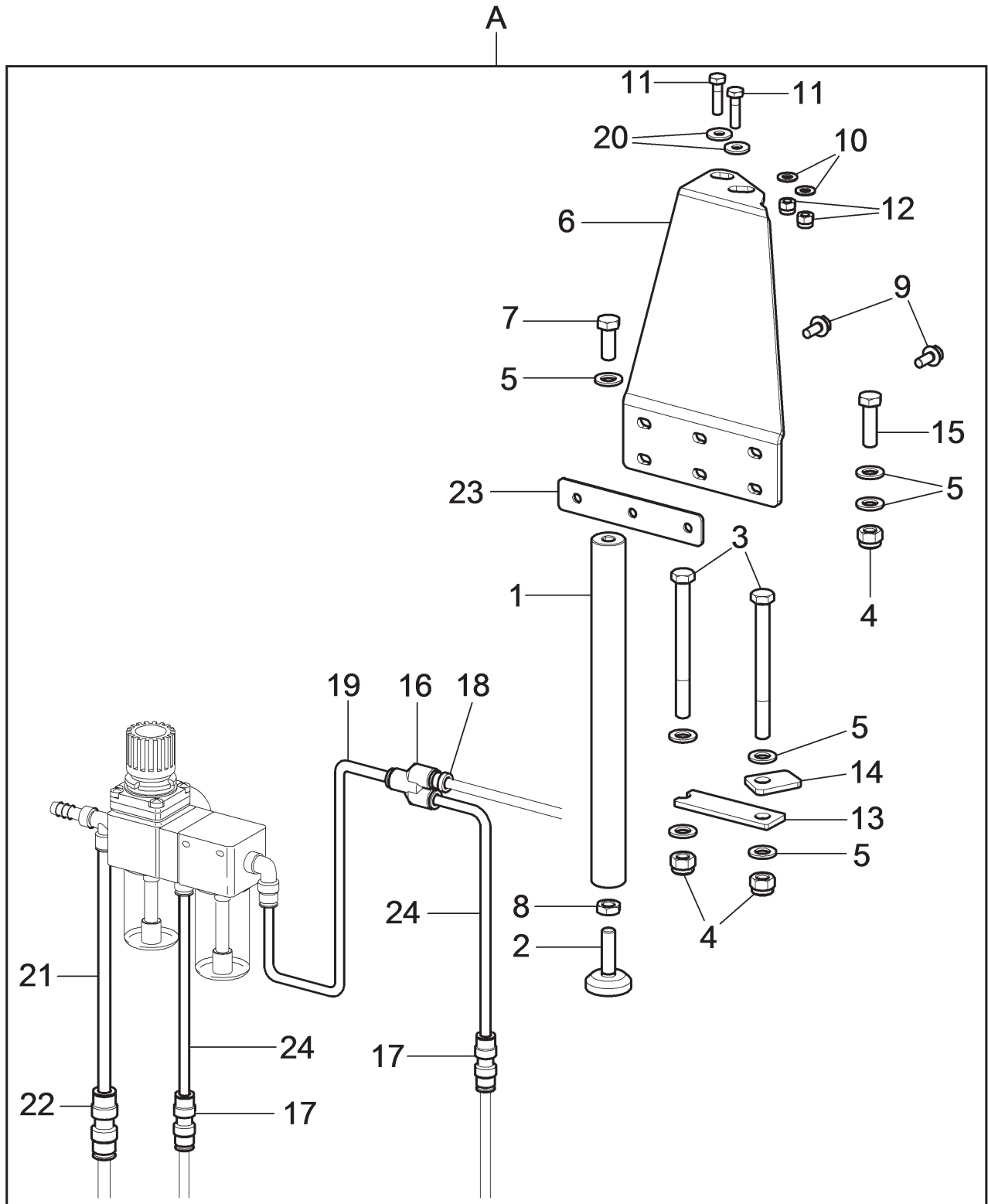
☼ Refer to clamp kit in Drawing 1

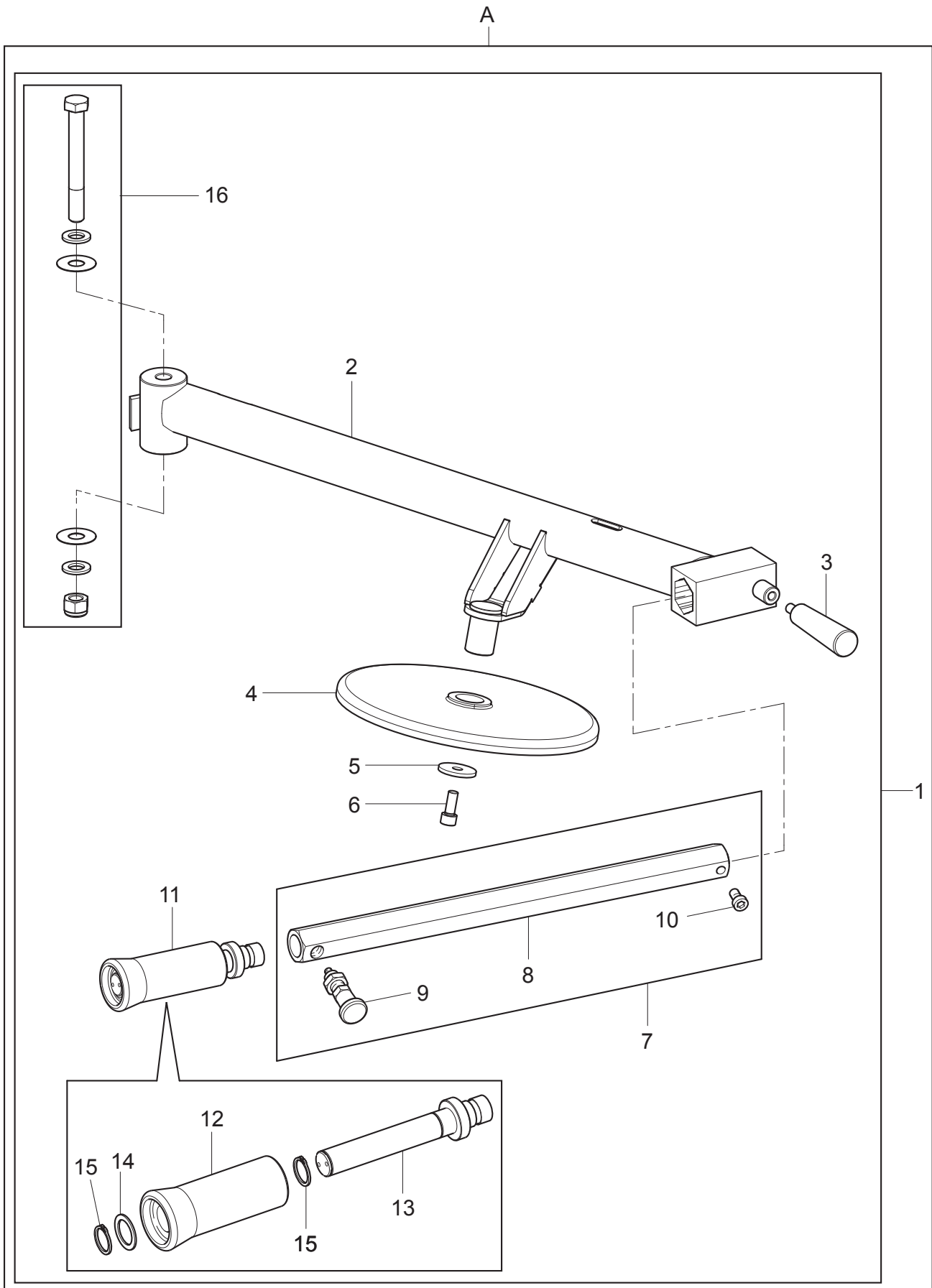
☼ Faire référence au kit colliers dans Table 1

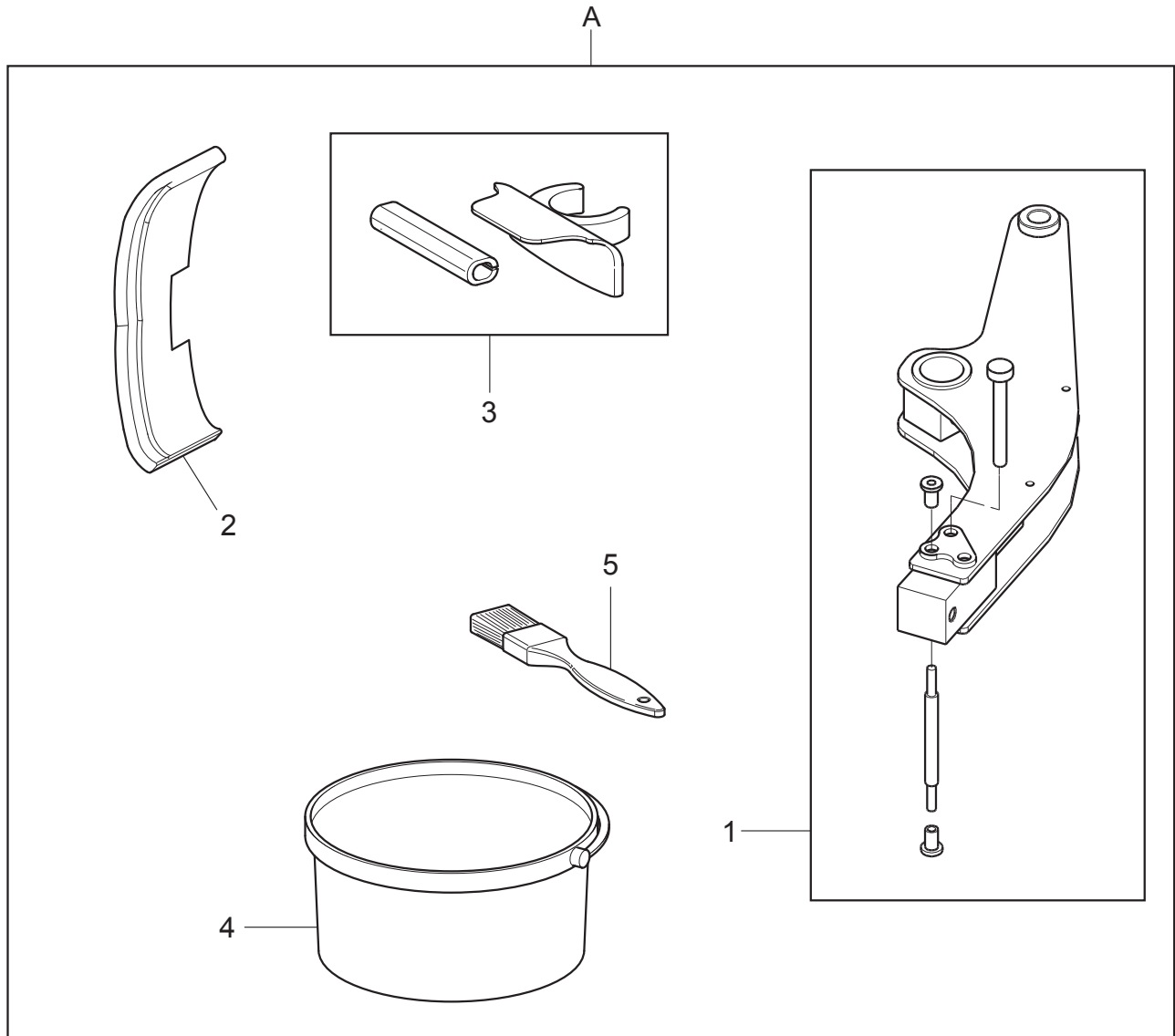
☼ Consulte el kit de abrazaderas en Tabla 1



#		D.R	N	Description	Description	Descripción		
1			VS770713231	Arms support	Support bras	Soporte brazos		
2			VS770714040	Shim blade	Lame d'épaisseur	Cuchilla de espesor		
3			VS770713000	Plate	Plateau	Plaque		
4	✓		VS730071130	Sliding blocks and bolts closing kit	Kit fermeture patines et vis	Kit cierre patines y tornillos		
5	✓		VS770790720	Long and short gib kit	Kit lardon long et court	Kit chaveta larga y corta		
6	✓		VS730071100	Bolts and nuts kit	Kit vis et écrous	Kit tornillos y tuercas		
7			VS770714010	Angle bar	Angulaire	Angular		
8	✓		VSB7298000	D.25 knob	Poignée D.25	Pomo D.25		
A	✓		VS770790621	Arms support	Support bras	Soporte brazos		







#		D.R	N	Description	Description	Descripción		
1	✓		VSG800A26	Shovel with adjustment inclination	Palette avec angle réglable	Pala con ángulo regulable		
2	✓		VSG800A11	Bead breaker shovel guard	Protection palette décolle-pneus	Protección paleta destalonador		
3	✓		VSG800A117	Tool protection set	Ensemble de protection outil	Conjunto protecciones útil		
4	✓		VSG800A37	Mounting grease	Pâte de montage	Grasa para montaje		
5	✓		VSG800A38	Brush	Brosse	Pincel		
A			VS730095020	Accessory kit assembly	Ensemble dotation	Conjunto dotación		

Drawing Number 23 - Rev. 0						→	→	
#		D.R	N	Description	Description	Descripción	→	→
		✓	VS2165001	Lateral bead breaker danger nameplate	Plaquette danger décolle-neus latéral	Plaquita peligro destalonador lateral		
		✓	VS2166001	Bead breaker danger nameplate	Plaquette danger décolle-neus	Plaquita peligro destalonador		
		✓	VS2170000	Max inflation pressure rating nameplate	Plaquette indicateur max. pression gonflage	Plaquita indicador máx presión de inflado		
		✓	VS2661000	4-pedals symbols nameplate	Plaquette symboles 4 pedales	Plaquita símbolos 4 pedales		
		✓	VS4244001	Rotating parts danger indicating nameplate	Plaquette danger parties rotatives	Plaquita peligro partes giratorias		
	■	✓	VS730095060	Nameplates kit	Kit plaquettes	Kit plaquitas		
	▲	✓	VS730096480	CSA nameplates kit	Kit plaquettes CSA	Kit plaquitas CSA		
	◆	✓	VS730096750	Rotary nameplates kit	Kit plaquettes Rotary	Kit plaquitas Rotary		
		✓	VS999911871	Headphones nameplate	Plaquette cache-oreilles	Plaquita cascos		
		✓	VS999913250	Head use nameplate	Plaquette usage tête	Plaquita uso cabeza		
		✓	VS999914290■	Serial number nameplate	Plaquette matricule	Plaquita matrícula		
		✓	VS999914700	Bead press control nameplate	Plaquette commandes pousse-talon	Plaquita mandos presio-natalón		
		✓	VS999916011	Motoinverter nameplate (placed inside the equipment)	Plaquette motoinverter (placée à l'intérieur de l'équipement)	Plaquita motoinversor (co-locada dentro del equipo)		
		✓	VS999916311	Rubbish skip nameplate	Plaquette poubelle déchets	Plaquita contenedor de-sechos		
		✓	VS999922390▲	Overload protection nameplate	Plaquette protection sur-charge	Plaquita protección sobre-carga		
		✓	VS999923160	Prop 65 Attention nameplate	Plaquette attention Prop 65	Plaquita atención Prop 65		
		✓	VS999923300▲	220 V - 1 Ph - 60 Hz - 20 A voltage nameplate	Plaquette tension 220 V - 1 Ph - 60 Hz - 20 A	Plaquita voltaje 220 V - 1 Ph - 60 Hz - 20 A		
		✓	VS999923350▲	For indoor use only nameplate	Plaquette usage intérieur seulement	Plaquita sólo para uso interior		
		✓	VS999923360▲	Disconnect power supply nameplate	Plaquette coupure de courant	Plaquita interrupción su-ministro		
		✓	VS999923400	UL-CSA ready nameplate	Plaquette UL-CSA ready	Plaquita UL-CSA ready		
		✓	VS999930420	Electricity danger nameplate	Plaquette danger élec-tricité	Plaquita peligro electri-cidad		
		✓	VS999930620◆	Rotary logo nameplate	Plaquette logo Rotary	Plaquita logo Rotary		
		✓	VS999930750◆	QR code nameplate	Plaquette code QR	Plaquita código QR		
		✓	VS999930760◆	Equipment nameplate	Plaquette équipement	Plaquita equipo		
A			-	Nameplates positioning	Positionnement plaquettes	Posicionamiento plaquitas		

The nameplates marked with the ■ symbol belong to the kit code 730095060.
 Les plaquettes marquées du symbole ■ appartiennent au kit code 730095060.
 Las plaquitas marcadas con el símbolo ■ pertenecen al código del kit 730095060.

The nameplates marked with the ▲ symbol belong to the kit code 730096480.
 Les plaquettes marquées du symbole ▲ appartiennent au kit code 730096480.
 Las plaquitas marcadas con el símbolo ▲ pertenecen al código del kit 730096480.

The nameplates marked with the ◆ symbol belong to the kit code 730096750.
 Les plaquettes marquées du symbole ◆ appartiennent au kit code 730096750.
 Las plaquitas marcadas con el símbolo ◆ pertenecen al código del kit 730096750.

Installer: Please return this booklet to literature package, and give it to the owner/ operator.

Thank You

Instalador: Por favor devuelva este manual al paquete de documentación y devuélvalo al propietario / operador.

Gracias

Installateur: Veuillez renvoyer ce manuel dans le dossier de documentation et le renvoyer au propriétaire / opérateur.

Merci

Trained Operators and Regular Maintenance Ensures Satisfactory Performance of Your Wheel Service Equipment.

Los Operadores Calificados y el Mantenimiento Regular Aseguran un Rendimiento Satisfactorio del Equipo de Asistencia para Ruedas.

Des Opérateurs Qualifiés et un Entretien Régulier Garantissent une Performance Satisfaisante de l'équipement d'assistance aux Roues.

Contact Your Nearest Authorized Rotary Wheel Service Equipment Parts Distributor for Genuine Replacement Parts. See Literature Package for Parts Breakdown.

Póngase en Contacto con su Distribuidor Autorizado de Piezas de Repuesto Rotary más Cercano para Obtener Reemplazos Originales.

Contactez votre Distributeur de Pièces Détachées Rotary Autorisé Plus Proche pour les Pièces D'origine.

Rotary World Headquarters
2700 Lanier Drive
Madison, IN 47250, USA
www.rotarylif.com

North America Contact Information
Tech. Support:
p 800.445.5438
f 800.578.5438
e userlink@rotarylif.com
Sales: p 800.640.5438
f 800.578.5438
e userlink@rotarylif.com

World Wide Contact Information
World Headquarters/USA: 1.812.273.1622
Canada: 1.905.812.9920
European Headquarters/Germany: +49.771.9233.0
United Kingdom: +44.178.747.7711
Australasia: +60.3.7660.0285
Latin America / Caribbean: +54.3488.431.608
Middle East / Northern Africa: +49.771.9233.0

© **Vehicle Service Group**SM
Printed in U.S.A., All Rights Reserved. Unless otherwise indicated, ROTARY, and all other trademarks are property of Dover Corporation and its affiliates.

