



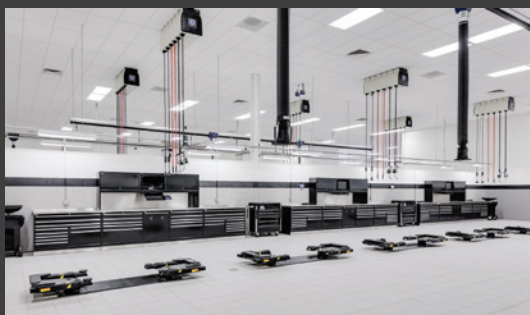
# SMARTLIFT<sup>®</sup>

INGROUND LIFT SERIES

8,000 lbs. / 10,000 lbs. / 12,000 lbs. CAPACITIES

# WHY SMARTLIFT®?

Since 1995, Rotary SMARTLIFTS have been the #1 choice for dealers to increase their shop's productivity and profitability.



From every angle, Rotary designed the SMARTLIFT® to maximize space, increase technician productivity and lower total cost of ownership, ultimately resulting in higher profits.



**Rotary delivers the SMART dealer choice for productivity and profit.**

***Don't take just our word for it...***

"Every technician who uses the Shock-wave-equipped lift loves it. It's a lot easier to rack the vehicles and they love the speed: It goes up a lot quicker and comes down faster, too."

- **Chris Musselman, Service Manager**  
**Bush Auto Place**

"In this business, seconds count. It's amazing how much faster we can service vehicles. Anything that gets the customer in and out quick is that much better."

- **Brent Ross, Service Director,**  
**Germain Nissan**

"It takes me half the time to rack, half the time to raise and lower. I can be on my job within two minutes of pulling the vehicle into the bay."

- **Rich Hofer, Service Technician**  
**Chandler Chevrolet**

"It's the best lift I've ever used. It's quicker, it's more efficient, and it operates very smoothly. The technicians love these lifts. I wouldn't even consider putting anything else in."

- **Gene Byrd, Fixed Operations Director**  
**Ed Morse Automotive Group**

**Choose the right lift for your shop.**

**Rotary Lift.**



## ARE YOU READY FOR **ELECTRIC VEHICLES?**

Today's dealerships and repair shops need a lift that is wide enough and versatile enough to work with both current and next generation vehicles.

**By 2030,**  
**1 out of every 3**  
**vehicles on the road**  
**will be electric.**

Ford and GM aspire that 40-50% of sales to be EVs by that year.



## MAXIMIZE YOUR SERVICE OPTIONS BY **GOING WIDE.**



**WIDE SMARTLIFT** SLW210-RA

Now, Rotary is ready to help you future-proof your business with the **NEW WIDE SMARTLIFT®** – **1.5X WIDER & 2X FASTER** than standard lifts!♦

Available in 10,000 and 12,000 lb. lifting capacities, the **WIDE SMARTLIFT®** can service vehicles ranging from subcompact cars to trucks. Modernize your facility and prepare for the future of repairs with the lift that services any vehicle that comes through the door.

♦ 2X FASTER WITH ADDED SHOCKWAVE TECHNOLOGY



# WIDE SMARTLIFT®

THE FUTURE LOOKS WIDE.

GET READY TO SERVICE THE NEXT GENERATION OF VEHICLES.

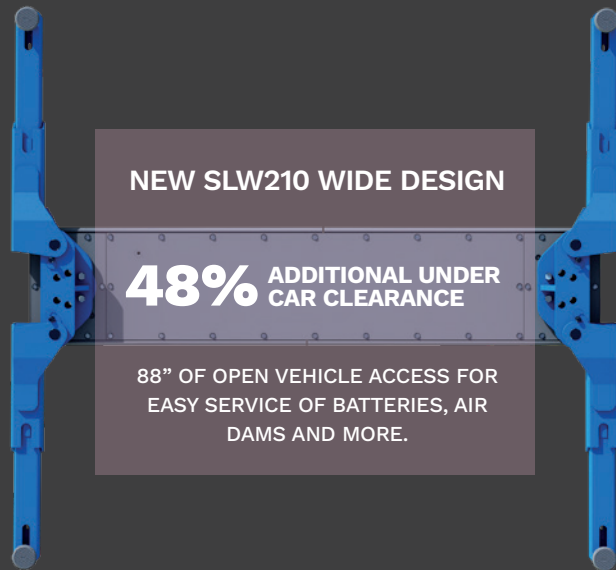
The WIDE SMARTLIFT® combines a wide stance with the exclusive revenue producing features only Rotary can offer.

Designed with versatility in mind to service electric vehicles, exotics and standard vehicles.

## 1.5X MORE ROOM FOR YOUR BUSINESS TO GROW

Wider open superstructure design provides clear access above and below the vehicle.

Repairs are done without danger of damaging vehicle components on lift columns or overheads.



## INCREASE PRODUCTIVITY SERVICE MORE VEHICLES



Rotary inground lifts provide 360° movement around the vehicle and unobstructed access above and below the vehicle.

The redesigned superstructure creates nearly 50% more under-vehicle space. Repairs can be performed without danger of damaging the vehicle on lift columns or overheads.

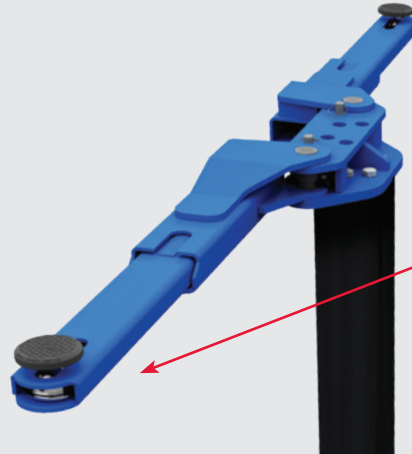




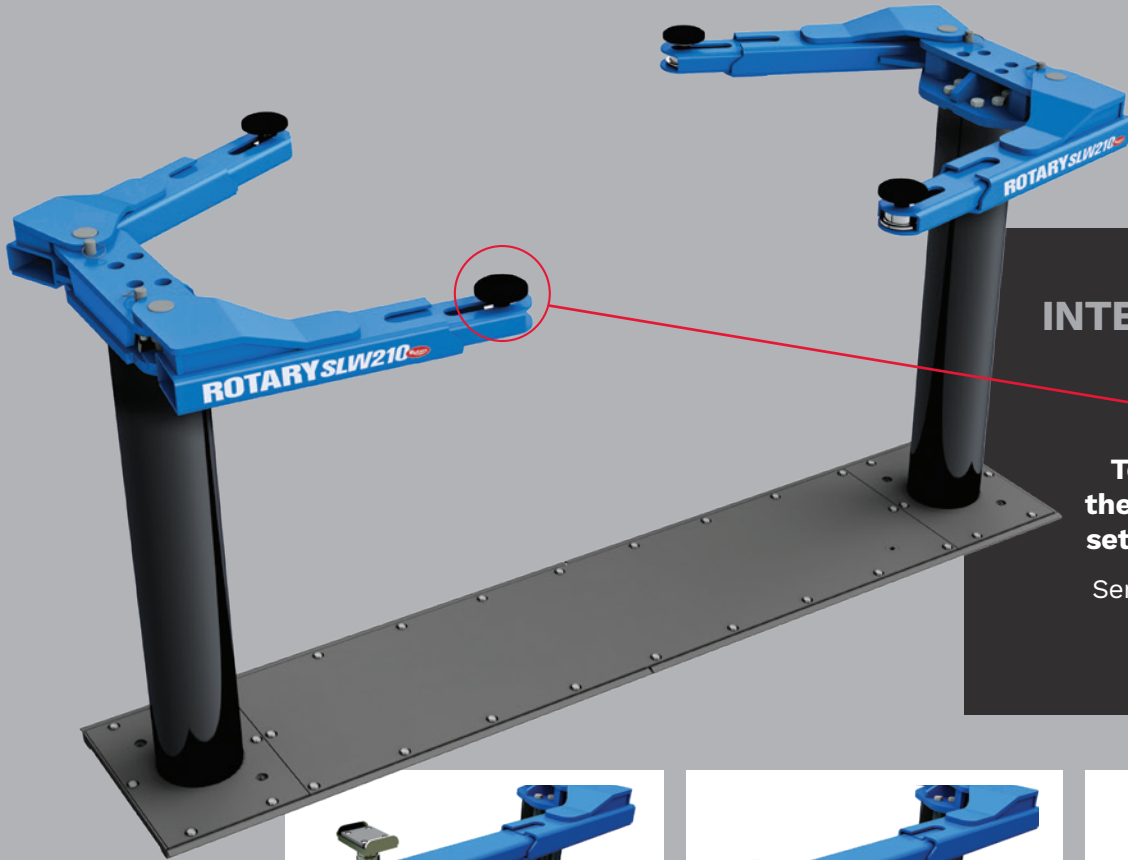
# PATENTED TRIO™ THREE-STAGE ARMS

**FASTER, EASIER SPOTTING OF EXOTIC AND LOW-PROFILE CARS.**

Versatile two-piece, three-stage arm design allows for quick positioning of the adapter to the vehicle pickup point with no need to move heavy two or three stage inner arms.



**18% GREATER VEHICLE REACH**  
TRIO arms spot a greater variety of vehicle types versus standard lift arms.



## INTERCHANGEABLE ADAPTER OPTIONS

**Technicians can choose the best optional adapter set for their lifting needs.**

Service cars, trucks and EVs on the same arm.\*



### TA Truck Adapters

Frame-engaging polymer adapters thread-up for additional reach.

Four (4) 3.5" and four (4) 5" stackable adapter inserts are standard on TA models

Required when lifting trucks and frame vehicles  
Available for use with stackable inserts



### RA Round Adapters

Round, padded RA polymer adapters thread-up for additional positioning.

Also available for use with stackable inserts



### OPTIONAL EV PAD ADAPTER

Padded polymer adapters thread-up for additional positioning.

\*SMARTLIFTS WITH TRIO ARMS COME STANDARD WITH YOUR CHOICE OF RA OR TA ADAPTERS.

EACH ADDITIONAL ADAPTER SET IS SOLD SEPARATELY.

# FEATURES DESIGNED FOR **HIGHER PROFITS**

Get the most from your service facility and see bigger savings over the life of your shop lifts.

## **SMART MONEY**



**NO ADDITIONAL EQUIPMENT IS NEEDED**

There are no hidden costs for special compressors, airlines or equipment while easily operating on typical shop air system - at only 90-120 psi.

## **FASTER, EASIER INSTALLATION\***

**SAVE UP TO**

**35%**



Smartlifts are preassembled and install easier and faster in a new or existing facility with minimal excavation. Smartlifts require less materials versus other wide stance lifts that need multiple pours, more assembly and longer time to complete installation.

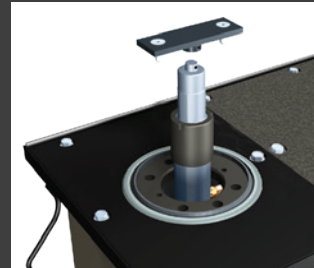


**SMARTLIFT TECHNOLOGY**  
FASTER ROUTINE SERVICE  
**AT A LESSER COST\***

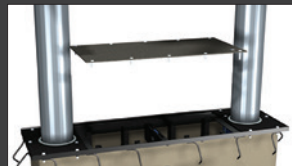
Easy Access™

**REDUCE DOWNTIME BY**  
**75%**

**PRESERVE BAY REVENUE WITH LOWER SERVICE REPAIR COSTS\***



**PATENTED EASY ACCESS™** cylinders allow all routine cylinder maintenance to be done at floor level with no forklifts cutting downtime by 75%.



**MAINTAIN ALL INTERIOR SYSTEMS FROM THE SHOP FLOOR**

**Easy to remove center cover** allows floor level service to air fittings, hydraulic hoses, air lock cylinder, and locking system.

\*WHEN COMPARED TO COMPETITIVE DESIGNS

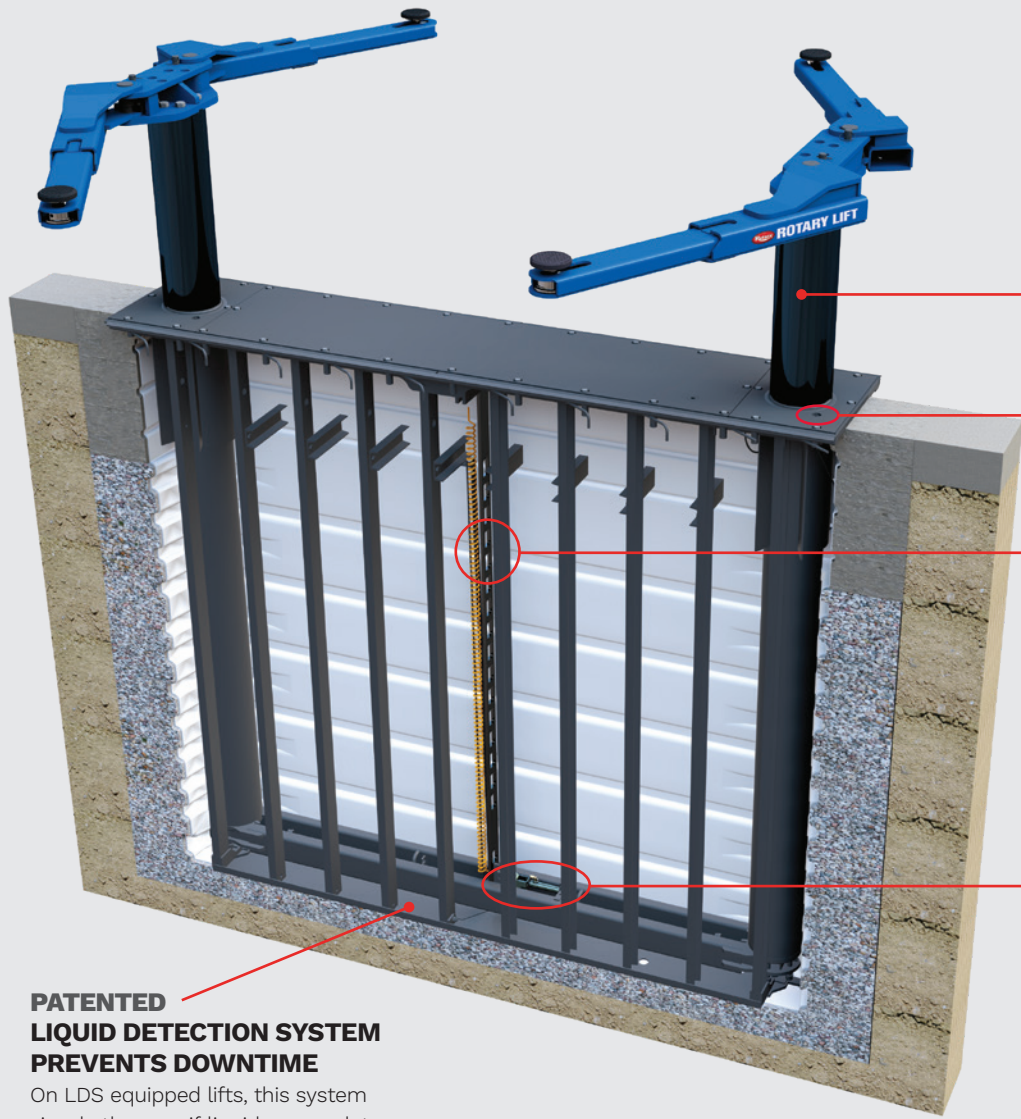
## **MORE UP TIME**



## **LESS LOST REVENUE**

No other lift brand rigorously life cycle tests its equipment to the same standards as Rotary. Testing validates components, minimizes lift failures and maximizes working time in the bay - matching years of reliable service.





**EXCLUSIVE SMARTGUARD® COATED PLUNGERS**

Prevents corrosion for time tested durability and performance.

**ACCESSIBLE GREASE FITTINGS**

Easy, ground level maintenance.

**LOCKING SYSTEM ENGAGES EVERY 3"**

Fully accessible from the surface for maintenance. Single lower to lock function at the power unit.

**PATENTED LOCKING SYSTEM FOR TROUBLE-FREE OPERATION**



The locking mechanism features a stainless steel and polymer cylinder construction for maximum corrosion resistance and service life.

**PATENTED LIQUID DETECTION SYSTEM PREVENTS DOWNTIME**

On LDS equipped lifts, this system signals the user if liquid accumulates in the containment.

**ENVIRONMENTALLY RESPONSIBLE NO EPA CONCERNS**



Smartlifts are fully contained in a recycled, single-piece polymer composite housing - oil leakage and spillage are a thing of the past eliminating any EPA concerns with this inground lift.



# SHOCKWAVE™ TECHNOLOGY

Achieve your goals of greater productivity and higher profits with the fastest lifts in the world.

SUPERCHARGE YOUR DEALERSHIP WITH

## 2X LIFTING SPEED

COMPARED TO STANDARD LIFTS



Designed specifically for bays where service speed is essential, Shockwave helps you keep step with the ever changing demands in the vehicle service industry.



**More productivity makes happier techs!**

*"The best product I have seen in my 35 years of being in business. We're getting cars in and out of the bays safer and faster. The technicians love these lifts. I wouldn't even consider putting anything else in."*

Gene Byrd  
Fixed Operations Manager  
Ed Morse Automotive Group

*"We have installed more than 100 Shockwave-equipped SmartLift inground lifts at several new dealership locations. Going forward, we will have Shockwave in all of our new bays. With unmatched equipment reliability and support, Rotary is a name you can trust."*

Dan Johnson  
Director of Fixed Operations  
Larry H. Miller Group

## PATENTED SHOCKWAVE PERFORMANCE PACKAGE



## DC POWER SYSTEM REDUCES OPERATING COSTS



Shockwave's DC power system gives you lower cost and more reliable operation while using two standard Group 24 batteries.\*

## SAVE UP TO 80% INSTALLING SHOCKWAVE

The built in battery charger uses 110v power, eliminating the need for installing expensive 220v wiring.

## 2X CYCLE TIMES\*\*



25 SECOND RISE TIME  
19 SECOND DESCENT TIME



## SPOTLINE™ MOTION ACTIVATED LASER

HELPS SPOT VEHICLES THE FIRST TIME!



Center vehicles in bays quickly and accurately using this laser-guided system.

LEARN HOW TO ACCELERATE YOUR SERVICE NUMBERS WITH SHOCKWAVE LIFTS



\* Batteries not included \*\* Actual rise and descent times may vary depending on weight of the vehicle



## OPERATING CONTROLS and POWER UNIT CONFIGURATIONS

AVAILABLE OPTIONS FOR 8,000 lbs., 10,000 lbs. and 12,000 lbs. SERIES LIFTS

### INTEGRATED BENCH CONTROLS

Improve your facility's image with an open and clear floor. Increase technician efficiency with the ease of use.

Available for conventional and SHOCKWAVE-equipped lifts. Contact Rotary for details.



Shown: Center controls on work bench

### SINGLE TOUCH CONTROLS



#### ONE TOUCH CONTROL with Liquid Detection System

Raising and lowering the lift is simplified with a single button. The lift can be lowered and the safety locks disengaged with one finger.

### CONVENTIONAL CONTROLS



#### CONVENTIONAL

Efficient and easy to use, power units feature a heavy-duty electric motor with single up button switch and a single lowering valve release handle.

### CHOOSE FROM WALL-MOUNTED OR PEDESTAL STAND CONFIGURATIONS

Options are available for conventional, one-touch, and SHOCKWAVE-equipped lifts. Contact Rotary for details.



## SERIES SPECIFICATIONS

Minimum Bay Size	8,000 and 10,000 lbs. Capacities: 11' x 24' 12,000 lbs. Capacity: 11' x 26'	Voltage Single Phase	208-230V <b>110V with SHOCKWAVE</b>	* Rise measures lowest and highest position of the supplied adapters from floor to full cylinder stroke.  ** Actual rise and descent times vary depending on vehicle weight.  Lift colors: Blue or Red RAL3002  RAL5005
Ceiling Height Minimum	Required ceiling height equals rise with tallest adapter extensions plus height of vehicle	Electrical Usage Ø	.01kWh per cycle	
		Guide Plunger Diameter	8 1/2"	
		Time of Full Rise / Descent <b>With SHOCKWAVE**</b>	53 seconds / 24 seconds <b>25 seconds / 19 seconds</b>	

### 10,000 lbs. and 12,000 lbs. SERIES LIFTS FEATURE TRIO 2-piece, three-stage arms

- Available with SHOCKWAVE™ DC battery power • Multi-position wheel spotting dish standard • ALI Gold Certified lifts

### WIDE SMARTLIFT® MODELS



#### 10,000 LBS. CAPACITY LIFTS

**SLW210-RA**  
Round Polymer Adapters

**SLW210-TA**  
Frame-Engaging Truck Adapter



#### 12,000 LBS. CAPACITY LIFTS

**SLW212-TA**  
Frame-Engaging Truck Adapter

### STANDARD SMARTLIFT® MODELS



#### 10,000 LBS. CAPACITY LIFTS

**SL210-RA**  
Round Polymer Adapters

**SL210-TA**  
Frame-Engaging Truck Adapter



#### 12,000 LBS. CAPACITY LIFTS

**SL212-TA**  
Frame-Engaging Truck Adapter

### MODEL SPECIFICATIONS

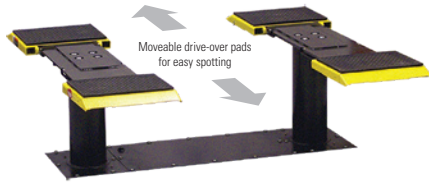
	SLW210-RA	SLW210-TA	SLW212-TA	SL210-RA	SL210-TA	SL212-TA
STANDARD POWER	SLW210iN0GO	SLW210iN0TO	SLW212iN0TO	SL210N10GO	SL210N10TO	SLW212N110
SHOCKWAVE POWER	SLW210U0GO	SLW210U0TO	SLW212U0TO	SL210U10GO	SL210U10TO	SLW212U110
Lift Capacity Capacity per Arm	10,000 lbs. 2,500 lbs.		12,000 lbs. 3,000 lbs.	10,000 lbs. 2,500 lbs.		12,000 lbs. 3,000 lbs.
Rise* / 71" cylinder stroke	75-3/16" to 76-3/8"	75-1/4" to 76-7/16"	75-9/16" to 76-3/4"	74 3/4" to 76"	75" to 76 1/4"	75" to 76 1/4"
Overall Width	119-5/8"			108 1/4"		98 5/8"
Drive-Thru Clearance	88-1/16"			88"		87 3/8"
Minimum Arm Reach	19-11/16"	19-11/16"	21-7/16"	18 7/8"	18 7/8"	22"
Maximum Arm Reach	44-1/2"	44 -1/2"	47"	41 5/8"	41 5/8"	46"
Min. Adapter Height from Floor	4-1/4"	4-7/8"	4-7/8"	3 3/4"	4"	4"

## DRIVE-OVER SMARTLIFT® PAD MODELS

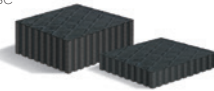


**8,000 LBS. CAPACITY LIFTS**  
**SL210-MP8**  
 Drive-Over Movable Pad Lifts

Moveable, low profile lift pads allow for quick and accurate vehicle spotting and lifting. Ideal for quick service bays, pads extend and retract allowing ample area when spotting the vehicle.



Standard with composite polymer rubber adapter pad kits. Pads are placed on platforms to increase height for accurate vehicle spotting.



### MODEL SPECIFICATIONS **SL210-MP8**

STANDARD POWER	SLW210N8XO
SHOCKWAVE POWER	SLW210U8XO
Lift Capacity	8,000 lbs.
Capacity per Pad	2,000 lbs.
Rise*/ 71" cylinder stroke	75 1/4" to 76 3/4"
Overall Width	78 1/4"
Width Between Pads	36 3/4"
Minimum Pad Reach	29 3/4"
Maximum Pad Reach	74 3/4"
Minimum Pad Height	2 3/4"
Pad Width / Pick-up Area	20"

## OPTIONAL ACCESSORIES

### Specialty Adapters for GM Pickup Trucks

#### Drop-In Truck Adapter Kits for Standard and TRIO™ Arms

Adapter kits for lifting 2019 Chevrolet Silverado and GMC Sierra 1500 trucks.

- Maximum width: 7"
- Capacity 3,000 lbs. per adapter



#### #FJ6257KIT

Set of two specifically designed for TRIO arms.

These adapters are wider to fit the wider frame of the vehicle. You'll replace the front two adapters on the lift and continue to use the current truck adapters on the rear arm.

### TECH LIGHT™ Line Light R

Rechargeable LED inspection hand lamp with top spot light. Supplied with flexible suspension clips holder with both hook and magnet for positioning the light where you need it.

- 180 lumen in main light operates for up to 3 hours
- 120 lumen in spot light operates for up to 6 hours
- 4 hour charging time

#FA5702



### Wheel Wing™ Tire Arm

100 lbs. capacity Wheel Wing tire arm mounts on arm and holds a tire at lift arm height. Folds away when not in use.

- Adjustable to fit various lift arms
- Includes 2 arms, 2 magnetic lug nut dishes, shims



#FA5974

### Lock Light™ Patent pending

Provides an instant green light visual confirmation when lift is lowered to its locks. Compatible with high-pressure lifts that use an electric/hydraulic power unit providing an unused pressure port is available.

- Kit includes:**
- Indicator light assembly
  - Pressure switch



#FA834-KIT / 110V  
 #FA835-KIT / 220V

### MW-200 Tire Lift

Air operated tire and wheel lift. 200 lbs. capacity.

- Quick transfers to tire balancers with easy positioning of the tire and wheel
- Includes air hose and air tool connection

#### #MW-500

500 lbs. capacity model available



#MW-200

### SPOTLINE™ Laser Kit

Motion activated laser helps center vehicles in bays quickly and accurately. Laser guided system comes complete with motion sensor and mounting hardware.



#FA7815

**The name you've come to trust for lifting vehicles worldwide also offers the best wheel service equipment for your shop.**

Rotary's line of wheel service equipment offers cutting-edge technology, productivity and safety features that every shop is looking for.

Providing the best service is about more than just know-how. It's about having the right equipment for the job. The go-to choice for shops of all sizes, Rotary's line of premium equipment is manufactured to the highest standards of quality and durability to help you perform the job right the first time, every time. All Rotary wheel service equipment carries an industry-leading 3 year warranty

Offer your customers top quality tire and wheel service by putting Rotary to work for you.

[www.rotarywheelservice.com](http://www.rotarywheelservice.com)



**ALIGNMENT SYSTEMS**



**TIRE CHANGERS**



**WHEEL BALANCERS**



PART OF **VSG** a **DOVER** company

Rotary is the world leader in service bay solutions offering a broad range of equipment and accessories to make any service bay safer and more productive.

For a complete guide to our product offering or to contact your local distributor, visit us at [www.rotarylift.com](http://www.rotarylift.com) today.

If you need assistance or have questions, we're here to help

800.445.5438 / Sales: [insidesales@vsdover.com](mailto:insidesales@vsdover.com) / Support: [technicalsupport@rotarylift.com](mailto:technicalsupport@rotarylift.com)



**ROTARY**

2700 Lanier Drive  
Madison, IN 47250, U.S.A.

Lit# **Rotary SMARTLIFT Cutsheet.2022.11**

©2022 VEHICLE SERVICE GROUP™  
All Rights Reserved. Unless otherwise indicated, ROTARY, VEHICLE SERVICE GROUP™, DOVER and all other trademarks are property of Dover Corporation and its affiliates. Printed in U.S.A.

Product specifications, part numbers, images and component descriptions are subject to change without notice or liability.