

LT35A LIFT TABLE

SERVICE ELECTRIC VEHICLES SAFELY

PATENT-PENDING REPAIR TABLE
EXPANDS YOUR SERVICE CAPABILITIES!

**FUTURE-PROOF
CAPACITY AND
CAPABILITIES WITH
THIS VERSATILE,
AIR-HYDRAULIC
LIFTING TABLE.**

Built by the maker of the most trusted lifts in the industry, Rotary's LT35A Lift Table is designed to handle EV batteries and other heavy vehicle components with ease!



NO ELECTRIC POWER NEEDED

- Air-powered hydraulics
- Can be used in any bay that has shop air
- Save time and increase production
- PASE and UL201 compliant for shop equipment



WATCH & LEARN!
Scan code to watch product videos.



SHOP AIR OPERATED HANDHELD PENDANT CONTROLS

ERGONOMIC CONTROLS WITH EXTRA LONG 78" PENDANT CORD

- Allows for ample operator movement
- Provides technician full view of work area to confirm load is correctly on the platform



**OEM-INSPIRED.
TECHNICIAN APPROVED.**

LT35A LIFT TABLE

THE ULTIMATE POSITIONING FLEXIBILITY

TABLE POSITION ALIGNMENTS CAN BE ADJUSTED WHILE UNDER LOAD WITHOUT REMOVING BATTERIES, PARTS, OR TOOLS FROM THE PLATFORM!

To compensate for floor slope, platform level adjustments align tabletop with batteries and car components without caster movement.



① SIDE TO SIDE TILT ALIGNMENT

Use a 14mm or 9/16" socket or wrench on tilt mechanism located on the right side of the lift table to raise or lower platform $\pm 3^\circ$.



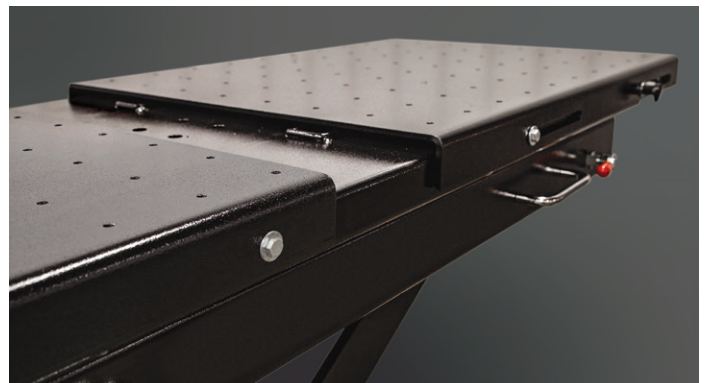
③ FINE TUNING ADJUSTMENT

For fine platform positioning, release the four red handled swivel locks on both sides of the lift table allowing the tabletop to move freely. Re-engage locks when fine positioning is not needed.



② FORE & AFT TILT ADJUSTMENT

Adjust the tabletop with the object being removed or installed $+3^\circ/-1^\circ$. Tighten to raise the side with the tilt mechanism and loosen to lower it by using a 14mm or 9/16" socket or wrench.

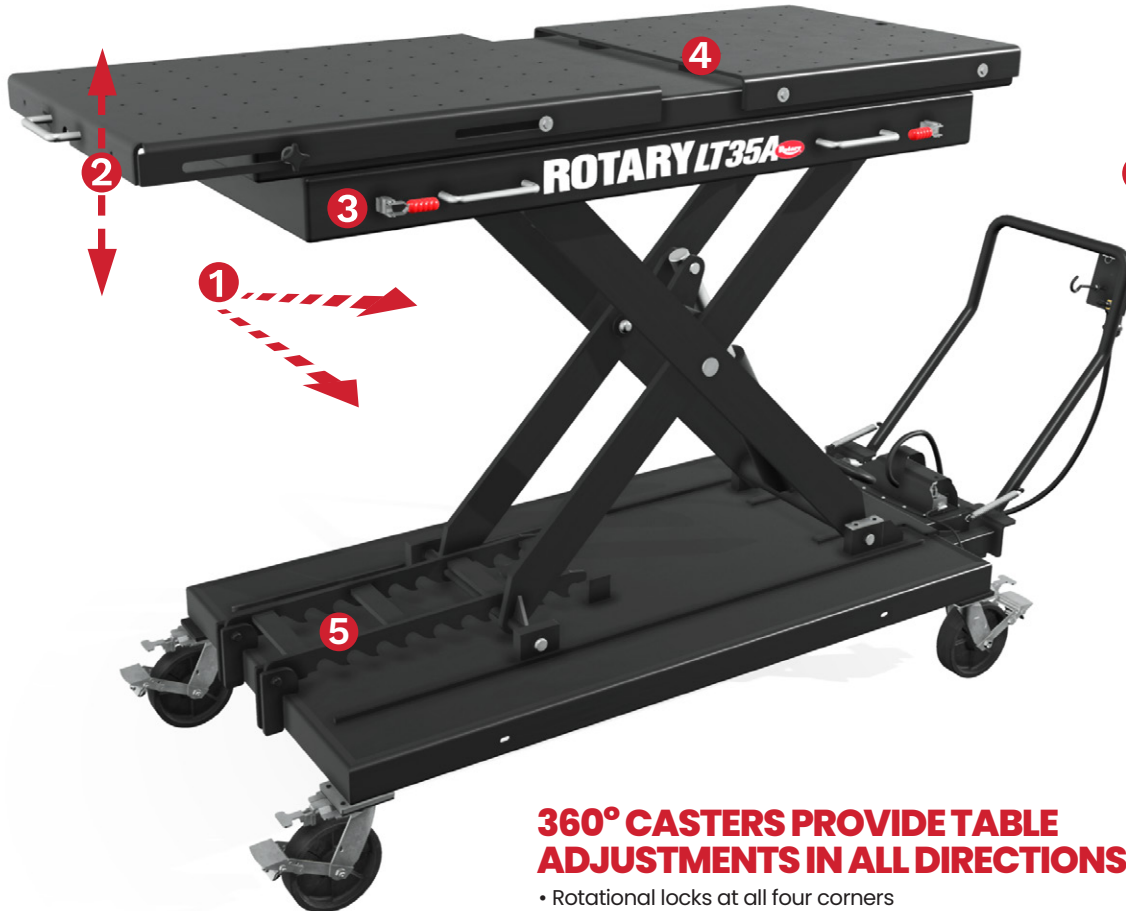


④ VERSATILE SPLIT SLIDING TOP

Extend platform surface up to an additional 8" without having to move the entire table for multi-positioning of larger loads. Includes threaded 10mm tabletop holes for attaching mounts and brackets for a broader array of service functions.

3,500 lbs. CAPACITY

THE LT35A LIFT TABLE IS DESIGNED TO HANDLE HEAVY VEHICLE COMPONENTS WITH EASE!



5 SHOP AIR RELEASED MECHANICAL LOCKS

- Safety measure adds locking security versus relying solely on the hydraulic system itself
- 10 locking positions at every 2-3/4",
- First lock is at a 34" table top height



360° CASTERS PROVIDE TABLE ADJUSTMENTS IN ALL DIRECTIONS

- Rotational locks at all four corners
- 8" low friction casters provide ample clearance between floor and platform base and easier movement across longer distances

Compliant with Standards for Garage Equipment
- adds additional support and safety guidelines



Locks shown in the raised position during lowering of table

ROTARY

BY ROTARY SOLUTIONS

LT35A

FEATURES & SPECIFICATIONS:

SPECIFICATIONS: LT35A000YBK

Lift Table Capacity	3,500 lbs.
Maximum Rise Height	70 1/8"
Collapsed Height	29"
Overall Width	35 1/2"
Overall Length	102 1/8"
Deck Width	31 7/8"
Deck Length	Closed: 73 3/8" Open: 81 3/8"
First Locking Positions*	34" Table Height
Air Requirements	90-120 PSI 6.2-8.3 bar
Clearance	6 3/4"

* 10 locking positions with 2 3/4" horizontal travel between each. Standard color is black.

RT30

FEATURES & SPECIFICATIONS:

SPECIFICATIONS: RT30-0000YBK

Lift Capacity: 3,000 lbs.	Width: 42"
Min. Height: 33 7/8"	Length: Min: 77" / Max: 106 1/2"
Max. Height: 38 1/8"	Weight: 400 lbs.

GAME CHANGING, PATENTED ACCESSORY! RT30 REPAIR TABLE

3,000 lbs. CAPACITY

**CREATE
MULTIPLE
REPAIR
STATIONS!**

**DO MORE WITH
ONE LIFT TABLE AND
PAIR THE RT30 REPAIR TABLE
WITH THE LT35A SCISSOR LIFT.**



SHOWN ABOVE: RT30 repair table mounted to 3,500 lbs. capacity LT35A scissor lift table

Use numerous RT30 repair tables with a single LT35A lift table and reduce the need for multiple lift tables!



WATCH & LEARN!
Scan code to watch product videos.



ROTARY SOLUTIONS

To learn more about all of our automotive service and repair solutions or to contact your local distributor, visit us at www.RotarySolutions.com today.

Need assistance or have questions? We're here to help:

800.445.5438 / Sales: insidesales@rotarysolutions.com
Technical Support: LD-techsupport@rotarysolutions.com

ROTARY SOLUTIONS™

2700 Lanier Drive | Madison, IN 47250, U.S.A.

Lit# Rotary.LT35 Lift Table Cutsheet.01.14.2025

©2025 VEHICLE SERVICE GROUP™
All Rights Reserved. Unless otherwise indicated, ROTARY SOLUTIONS™, VEHICLE SERVICE GROUP™, DOVER® and all other trademarks are property of Dover Corporation and its affiliates.

Product specifications, part numbers, images and component descriptions are subject to change without notice or liability.

