

# R501PLUS

## SPEEDCHANGER HD

### DISMOUNT AND MOUNT TRUCK TIRES IN 30 SECONDS WITH PATENTED FOUR ROLLER SYSTEM

- Positioned on both sides of the wheel in opposite positions
- Supported by two separately controlled arms
- Each control arm has two rollers
  - one conical which pushes on the bead
  - one cylindrical which pushes the side of the tire

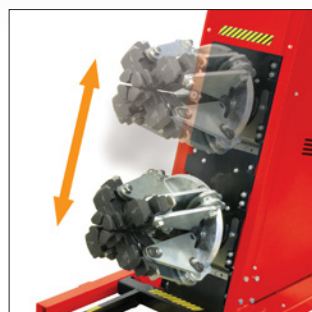
### SIMPLE TIRE MOUNT / DISMOUNTING:

- Bead saver tool protects beads during mounting and makes dismounting safer and far less labor intensive



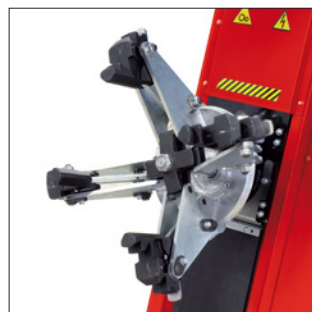
### ERGONOMIC CONSOLE PANEL

- Easy to use hand controls with adjustable arm positioning
- Allows for quick and easy movement around the machine



### HYDRAULIC HEIGHT POSITIONING

- Raise or lower the wheel clamps depending on the wheel diameter



### SECURE HYDRAULIC CLAMPING

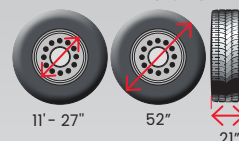
- Chucking unit moves clockwise, counter-clockwise, and up and down to clamp a variety of wheels

**4" Minimum Clamping  
13" Minimum Height**



### SUPER FAST TIRE CHANGER SERVICE TIRE DIAMETERS UP TO 52"

#### TIRE DIMENSIONS



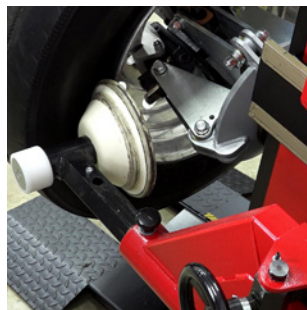
Adjustable arm positioning allows easy movement of bead breaker to lower drop center in front of the tire.



**QUICK LOADING  
SLIDING TIRE RAMP**

### WATCH & LEARN!

Scan code to watch product videos.



### PLASTIC ROLLERS

- Safely prevent damage to the rim
- Fast removal of tires with both front and back bead breakers in use



### PATENTED BEAD LEVER

- Allows quick mounting of the tire to the wheel

# ROTARY®

BY ROTARY SOLUTIONS

## R501PLUS COMMERCIAL TIRE CHANGER

### FEATURES

- Adjustable arm position
- Quick loading
- Hydraulic clamping / chucking table
- Stand-by function - no noise when not in operation
- Hydraulic controls
- Tire paste lubricant and brush

### R501 PLUS services:



Optional equipment may be required

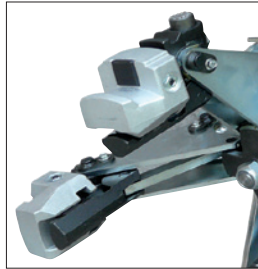
### SPECIFICATIONS:

Chucking unit rotation motor	2.7 Hp / 2 kW
Hydraulic drive unit motor	1 Hp / 1.5 kW
Maximum tire diameter	52" (1320mm)
Max. tire width	21" (540mm)
Bead breaker power	13,300 Ft / Lbs / 18000 N
Maximum assembly weight	2,645 lbs / 1200 kg
Chuck rotation speed (rev/min)	8
Max. torque to chuck	585 Ft/L lbs / 2600 Nm
Power supply	220v / 3Ø / 60 Hz

**Site Requirements: 220V / 3Ø / 60 Hz power supply**

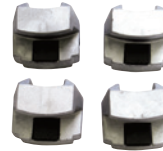
ROTARY WHEEL SERVICE EQUIPMENT carries a 3 year warranty.  
See website for details.

### STANDARD ACCESSORIES



#### VSG108A2

Standard clamp protections  
for alloy rims / 4 x kit



Aluminum rim protection  
using attachable braces on  
hydraulic clamps



#### VSG90A6

Aluminum rim clamp



#### VSG108A25

Steel rim clamp



#### VSG108A3 Tire Lever



#### B5308000

Long bead lifting lever

### OPTIONAL ACCESSORIES

#### VSG108A24

Disc for wheels with lock  
ring / agricultural wheels



#### VSG108A34

Pneumatic bead  
pushing device



PART OF VSG a DOVER company



ROTARY SOLUTIONS

To learn more about all of our automotive service and  
repair solutions or to contact your local distributor, visit  
us at [www.RotarySolutions.com](http://www.RotarySolutions.com) today.

**Need assistance or have questions? We're here to help:**  
800.445.5438 / Sales: [insidesales@rotarysolutions.com](mailto:insidesales@rotarysolutions.com)  
Technical Support: [WS-techsupport@rotarysolutions.com](mailto:WS-techsupport@rotarysolutions.com)

### ROTARY SOLUTIONS™

2700 Lanier Drive | Madison, IN 47250, U.S.A.

Lit# Rotary.R501P.Cutsheet.10.01.2024

©2024 VEHICLE SERVICE GROUP™

All Rights Reserved. Unless otherwise indicated, ROTARY SOLUTIONS™,  
VEHICLE SERVICE GROUP™, DOVER® and all other trademarks are  
property of Dover Corporation and its affiliates.

Product specifications, part numbers, images and component  
descriptions are subject to change without notice or liability.