

R541 COMMERCIAL HD

**ELECTRO-HYDRAULIC CHANGER
FOR TRUCKS, AGRICULTURAL, AND
EARTHMOVING VEHICLES**

SERVICE TUBE AND TUBELESS TIRES

The machine's dimensions and working strokes ensure maximum efficiency over a large range of tires.



TWO SPEED ROTATING CHUCKING TABLE

Rotational chucking table can accommodate rims from 11" up to 44" and up to 56" with optional extensions set.

EASY SINGLE ARM CARRIAGE MOVEMENT



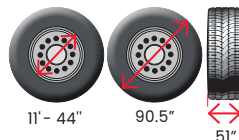
Hydraulic arm easily moves for precise tool spotting



INTEGRATED DEMOUNT TOOL FOR TUBE AND TUBELESS TIRES

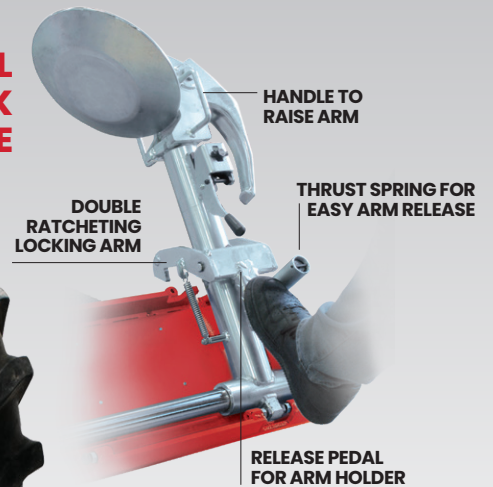
The tool operates between bead and rim for demounting the tire.

TIRE DIMENSIONS



HEAVY DUTY TIRE CHANGER SERVICES TIRE DIAMETERS UP TO 90"

**ROTATIONAL
TOOL WITH QUICK
UNLOCKING RELEASE**



Portable wired stand for rotational control

ROTARY[®]

BY ROTARY SOLUTIONS

R541 COMMERCIAL TIRE CHANGER

FEATURES

- Single carriage movement
- Double ratcheting locking arm
- Double speed for chucking table rotation
- Tire paste lubricant and brush

R541 services:



Optional equipment may be required

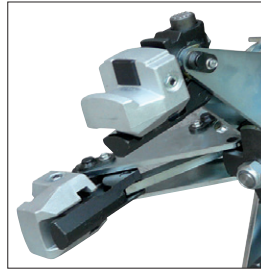
SPECIFICATIONS:

Chucking unit rotation motor	1.75 Hp / 1-1.3 kW
Hydraulic drive unit motor	2.95 Hp / 2.2 kW
Rim diameter	11" - 43"
With VSGA108A12 ADAPTERS	44" - 56"
Maximum tire diameter	90.5" (2300mm)
Maximum tire width	51" (1300mm)
Chuck rotation speed (rev/min)	4-8
Power supply	220v / 3Ø / 60 Hz

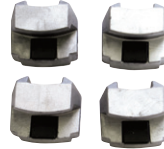
Site Requirements: 220V / 3Ø / 60 Hz power supply

ROTARY WHEEL SERVICE EQUIPMENT carries a 3 year warranty. See website for details.

STANDARD ACCESSORIES



VSG108A2
Standard clamp protections
for alloy rims / 4 x kit



**Aluminum rim protection
using attachable braces on
hydraulic clamps**



VSG90A6
Aluminum rim clamp



VSG108A3 Tire Lever



VSG108A25
Steel rim clamp



B5308000
Long bead lifting lever

OPTIONAL ACCESSORIES

VSG108A24
Disc for wheels with lock
ring / agricultural wheels



VSG108A34
Pneumatic bead
pushing device



VSG108A12
Set of extensions to increase clamping capacity
(4 x kit)



ROTARY SOLUTIONS

To learn more about all of our automotive service and repair solutions or to contact your local distributor, visit us at www.RotarySolutions.com today.

Need assistance or have questions? We're here to help:
800.445.5438 / Sales: insidesales@rotarysolutions.com
Technical Support: WS-techsupport@rotarysolutions.com

ROTARY SOLUTIONS™

2700 Lanier Drive | Madison, IN 47250, U.S.A.

Lit# [Rotary.R541.Cutsheet.10.01.2024](#)

©2024 VEHICLE SERVICE GROUP™
All Rights Reserved. Unless otherwise indicated, ROTARY SOLUTIONS™, VEHICLE SERVICE GROUP™, DOVER® and all other trademarks are property of Dover Corporation and its affiliates.

Product specifications, part numbers, images and component descriptions are subject to change without notice or liability.