



# COLLISION REPAIR TOOLS AND ACCESSORIES

**CHIEF**  
COLLISION TECHNOLOGY

## TABLE OF CONTENTS

Clamping Accessories **2 - 7**

Specialty Clamping Systems **8 - 13**

Pulling Accessories **14 - 22**

Hydraulics & Accessories **23 - 26**

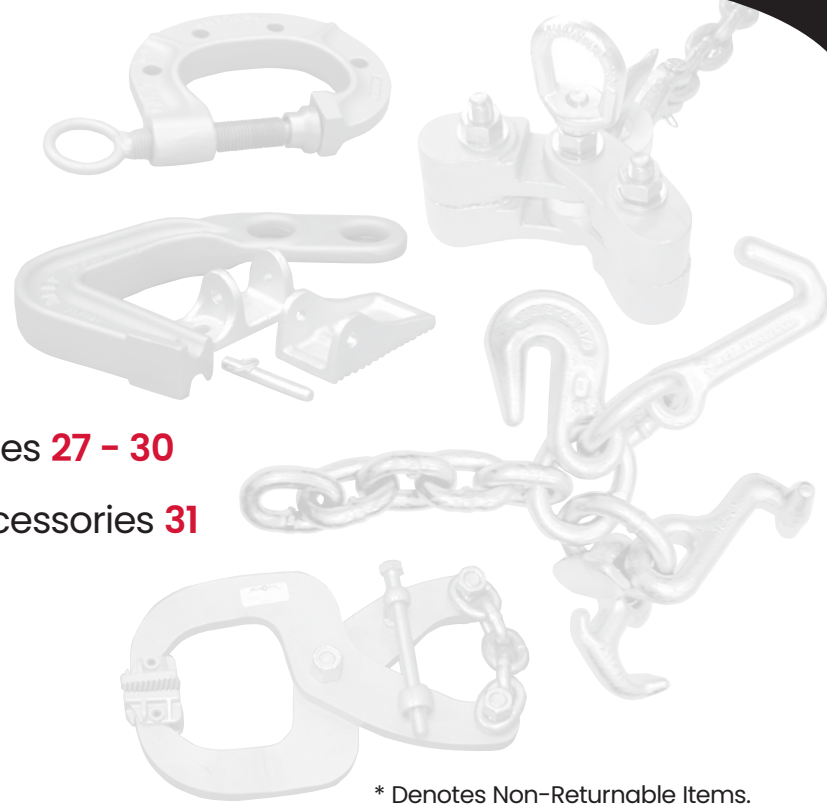
Fast Anchoring Systems & Accessories **27 - 30**

Streamliner Anchoring System & Accessories **31**

Tool Board Packages **32 - 35**

Miscellaneous **36 - 39**

Warranty Information **40**



\* Denotes Non-Returnable Items.

## ORDERING INFORMATION

To order Chief accessories, contact the Chief distributor nearest you by visiting [www.RotarySolutions.com](http://www.RotarySolutions.com). If ordering from outside the United States, contact the Chief representative or Chief distributor nearest you.

When contacting Chief by telephone or mail, provide the following information: Name; Name of Business; Business Telephone Number and Business Address. Also indicate the name of the accessory and its part number.

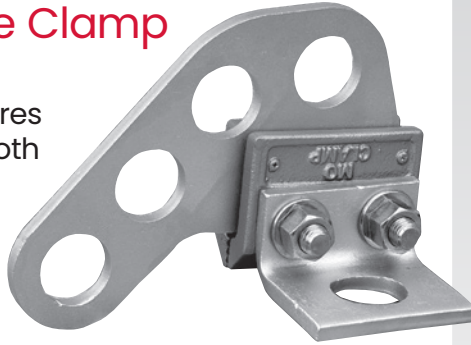
### NOTE:

- 1) Chief reserves the right to alter product specifications and/or package components without notice.
- 2) If accessory required is not listed in this catalog, contact our Inside Sales Department (1-800-445-9262) regarding the current availability or potential development of that accessory.

# CLAMPING ACCESSORIES

## MAC II™ Multi-Angle Clamp MC4058\*

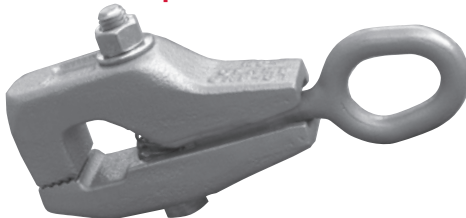
New style features cross-hatch tooth pattern which holds with less metal distortion. Larger pull plate is adjustable and reversible for more multi-angle pulls. Clamp has "bolt stoppers" to hold bolts stationary for easy tightening.



### SPECIFICATIONS:

|                   |                                        |
|-------------------|----------------------------------------|
| Capacity:         | 4 Ton (3,629 kg)                       |
| Overall Length:   | 9" (228mm)                             |
| Gripping Surface: | 3-3/4" wide (95mm)<br>5/8" deep (16mm) |
| Weight:           | 8 lbs. (3.63 kg)                       |

## Baby Box Clamp™ MC0670



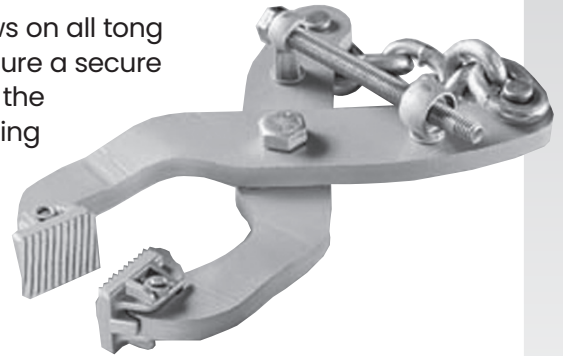
Self-tightening. Great for single-lip flanges and inside frame horns. Original wedge; cross-hatch tooth design; spring loaded for each opening.

### SPECIFICATIONS:

|                   |                                          |
|-------------------|------------------------------------------|
| Capacity:         | 5 Ton (4,536 kg)                         |
| Gripping Surface: | 1-3/4" wide (45mm)<br>1" deep (25mm)     |
| Throat Clearance: | 1-1/2" high (38mm)<br>1-1/4" deep (32mm) |
| Overall Length:   | 9-1/2" (241mm)                           |
| Weight:           | 7 lbs. (3.18kg)                          |

## Small Jaw Tong Clamp MC5850\*

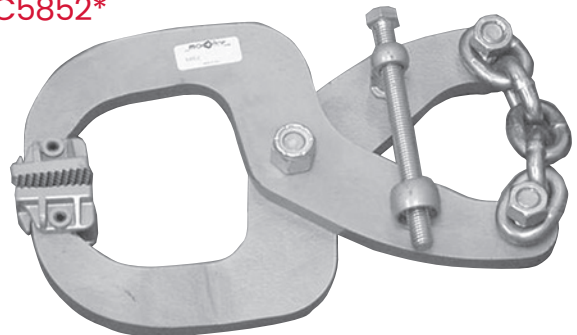
Pivoting jaws on all tong clamps assure a secure grip across the entire gripping surface on pulls up to 5 tons. Made in the USA of Tru-Tuff® heat treated steel alloy.



### SPECIFICATIONS:

|                  |                  |
|------------------|------------------|
| Capacity:        | 5 Ton (4.5t)     |
| Throat Depth:    | 5" (127mm)       |
| Maximum Opening: | 5.25" (133mm)    |
| Throat Closed:   | 2" (51mm)        |
| Overall Length:  | 12" (304mm)      |
| Weight:          | 10 lbs. (4.54kg) |

## Large Tong Type Clamp MC5852\*



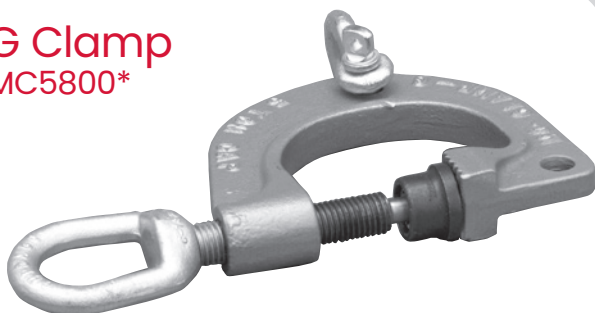
Pivoting jaws on all tong clamps assure a secure grip across the entire gripping surface on pulls up to 5 tons. Made in the USA of Tru-Tuff® heat treated steel alloy.

### SPECIFICATIONS:

|                  |                   |
|------------------|-------------------|
| Capacity:        | 5 Ton (4.5t)      |
| Throat Depth:    | 5" (127mm)        |
| Maximum Opening: | 6" (152mm)        |
| Throat Closed:   | 3" (76mm)         |
| Overall Length:  | 12" (304mm)       |
| Weight:          | 11 lbs. (4.95 kg) |

# CLAMPING ACCESSORIES

## G Clamp MC5800\*

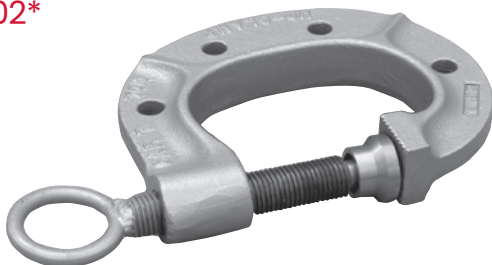


Easier pulling with multiple pulling angles. The G Clamp's 4-inch throat allows room to get over, around and behind damage, plus movable shackle for more versatility. Made of heat-treated alloy steel cast. Includes swivel pad.

### SPECIFICATIONS:

|                 |                  |
|-----------------|------------------|
| Capacity:       | 4 Ton (3,629 kg) |
| Overall Length: | 10-1/2" (267mm)  |
| Overall Width:  | 6" (152mm)       |
| Weight:         | 6 lbs. (2.72 kg) |

## Jumbo G Clamp MC5802\*



The Jumbo G Clamp's 7-inch throat opening allows you to get over, around and behind the damage. Multiple holes allow for various angle pulls. Optional Shackle (#4059) means even more versatility. Includes swivel pad.

### SPECIFICATIONS:

|                 |                  |
|-----------------|------------------|
| Capacity:       | 5 Ton (4,536 kg) |
| Overall Length: | 15-1/2" (394mm)  |
| Overall Width:  | 9-1/2" (241mm)   |
| Weight:         | 22 lbs. (9.9 kg) |

## Curved Clamp MC1370\*

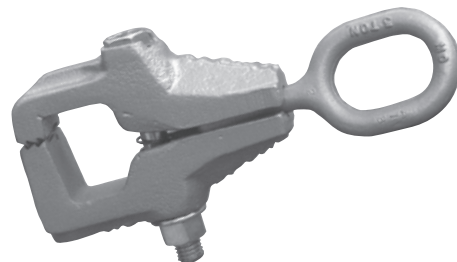


Features actuating jaws for getting around multiple angle curves and bends. Heavy duty pull rings allow for both vertical and horizontal pulling. Cast-in cross-hatch tooth design means no slippage when making pulls. Rated at 5-tons for tough pulls. Made from Tru-Tuff® steel alloy.

### SPECIFICATIONS:

|                   |                                       |
|-------------------|---------------------------------------|
| Capacity:         | 5 Ton (4,536 kg)                      |
| Gripping Surface: | 7" wide (177.8mm)<br>3/4" deep (19mm) |
| Weight:           | 11 lbs. (5 kg)                        |

## Dyna-Mo Box Clamp™ MC0655

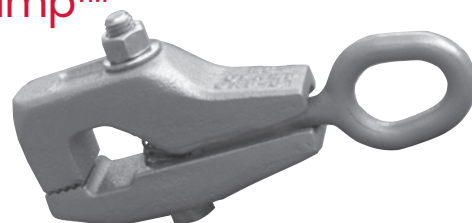


Heat-treated jaws reach around flanges and other obstructions to get a grip on hard-to-reach surfaces. Severe duty tooth design for aggressive pulling power.

### SPECIFICATIONS:

|                   |                                          |
|-------------------|------------------------------------------|
| Capacity:         | 3 Ton (2,722 kg)                         |
| Gripping Surface: | 1-1/4" wide (32mm) X<br>1/2" deep (10mm) |
| Overall Length:   | 8" (201mm)                               |
| Weight:           | 4 lbs. (1.81kg)                          |

## Baby Box Clamp™ MC0670



Self-tightening. Great for single-lip flanges and inside frame horns. Original wedge; cross-hatch tooth design; spring loaded for each opening.

### SPECIFICATIONS:

|                   |                                          |
|-------------------|------------------------------------------|
| Capacity:         | 5 Ton (4,536 kg)                         |
| Gripping Surface: | 1-3/4" wide (45mm)<br>1" deep (25mm)     |
| Throat Clearance: | 1-1/2" high (38mm)<br>1-1/4" deep (32mm) |
| Overall Length:   | 9-1/2" (241mm)                           |
| Weight:           | 7 lbs. (3.18kg)                          |



# CLAMPING ACCESSORIES

## Flash Clamps

MC0450\* / MC0451\* / MC0452\*



Spring-loaded operation makes each clamp easy to use. Pivoting heads allow for a secure grip on uneven surfaces. Heat-treated investment cast jaws provide years of effective pulling power. Retaining bolt holds clamps in place. Drop-forged wedge teeth can be easily replaced.

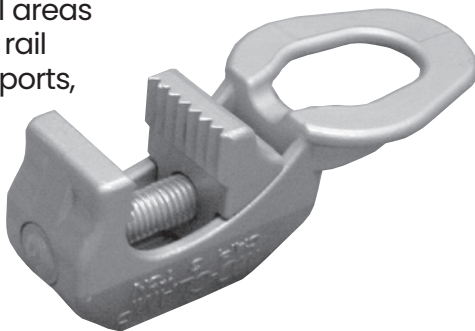
### SPECIFICATIONS:

|                 | MC0450           | MC0451           | MC0452           |
|-----------------|------------------|------------------|------------------|
| Capacity:       | 5 Ton (4,536 kg) | 3 Ton (2,722 kg) | 7 Ton (6,350 kg) |
| Overall Length: | 8" (228mm)       | 8" (228mm)       | 8" (228mm)       |
| Overall Width:  | 2" (50.7mm)      | 2" (50.7mm)      | 3.5" (89mm)      |
| Weight:         | 3 lbs. (.91 kg)  | 3 lbs. (.91 kg)  | 5 lbs. (2.27 kg) |

## T.O.<sup>TM</sup> (Tight Opening) Clamp

MC0550\*

For hard to pull areas such as frame rail ends, core supports, box sides and cowls. Original straight cut tooth design.

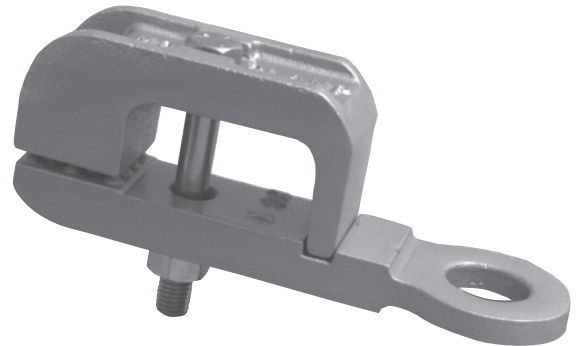


### SPECIFICATIONS:

|                   |                                        |
|-------------------|----------------------------------------|
| Capacity:         | 3 Ton (2,722 kg)                       |
| Gripping Surface: | 1-1/2" wide (38mm)<br>1/2" deep (13mm) |
| Overall Length:   | 6-1/2" (165mm)                         |
| Weight:           | 3 lbs. (1.36 kg)                       |

## Box<sup>TM</sup> Clamp

MC0650\*



A must for pulling on box rails with welded-on bumper flanges. Reaches around protruding metal to get a grip on hard-to-reach surfaces. Its heat-treated jaws grip a substantial area for pulls from several directions and angles. Gator tooth design.

### SPECIFICATIONS:

|                   |                                  |
|-------------------|----------------------------------|
| Capacity:         | 4 Ton (3,629 kg)                 |
| Gripping Surface: | 2" wide (50mm)<br>2" deep (50mm) |
| Overall Length:   | 10" (254mm)                      |

## W<sup>®</sup> Clamp

MC0400\*



Self-tightening. Ultra-wide gripping surface. Grabs 4-1/4" of metal. Original wedge. Original straight cut tooth design.

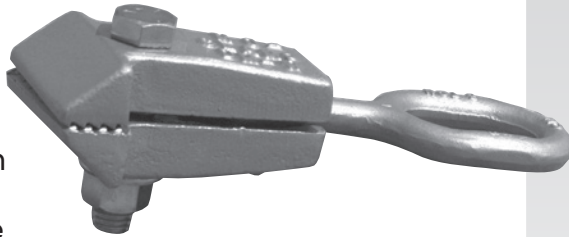
### SPECIFICATIONS:

|                   |                                       |
|-------------------|---------------------------------------|
| Capacity:         | 6 Ton (5,443 kg)                      |
| Gripping Surface: | 4-1/4" wide (108mm)<br>1" deep (25mm) |
| Overall Length:   | 9-1/2" (241mm)                        |
| Weight:           | 11 lbs. (4.99 kg)                     |

# CLAMPING ACCESSORIES

## Dyna-Mo™ W Clamp MC0405\*

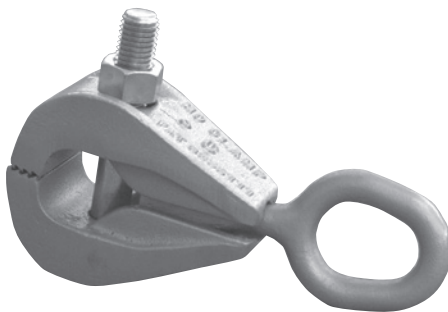
Self tightening. Wide tooth surface to grab more thin metal without tearing. Drop-forged round wedge to keep twist out of chain, and aggressive cross-hatch tooth design.



| SPECIFICATIONS:   |                                          |
|-------------------|------------------------------------------|
| Capacity:         | 3 Ton (2,722 kg)                         |
| Gripping Surface: | 2-1/4" wide (57mm)<br>1-3/4" deep (45mm) |
| Overall Length:   | 7" (178mm)                               |
| Weight:           | 3 lbs. (1.36 kg)                         |

## C Clamp MC0200\*

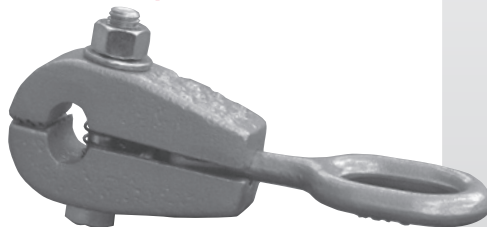
Self-tightening. Its 1-1/2" (39mm) throat clearance fits over a flange or frame horn, or around a lip to pull from behind. Original wedge. Original straight cut tooth design.



| SPECIFICATIONS:   |                                    |
|-------------------|------------------------------------|
| Capacity:         | 5 Ton (4,536 kg)                   |
| Gripping Surface: | 2" wide (50mm)<br>5/8" deep (16mm) |
| Overall Length:   | 8-1/2" (215mm)                     |
| Weight:           | 7 lbs. (3.18 kg)                   |

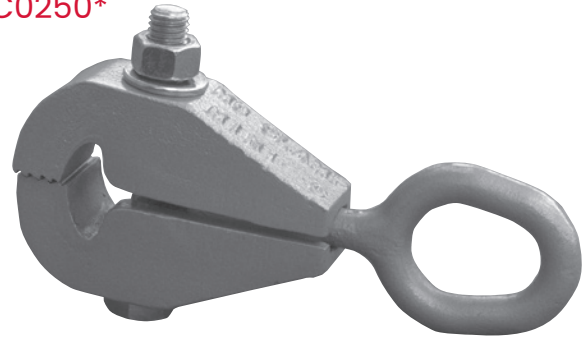
## Dyna-Mo™ C Clamp MC0205\*

Self-tightening. Great for getting over lips or edges. Drop-forged round wedge to keep the twist out of chain, and aggressive cross-hatch tooth design. Spring-loaded for easy opening.



| SPECIFICATIONS:   |                                        |
|-------------------|----------------------------------------|
| Capacity:         | 3 Ton (2,722 kg)                       |
| Gripping Surface: | 1-1/4" wide (32mm)<br>1/2" deep (13mm) |
| Overall Length:   | 7" (178mm)                             |
| Weight:           | 2 lbs. (.91 kg)                        |

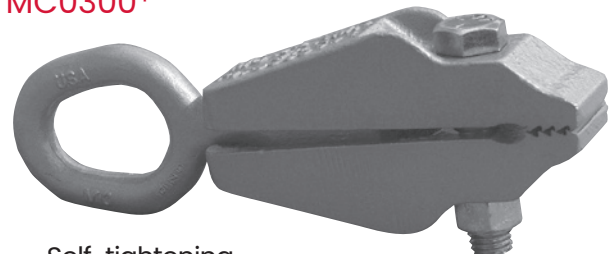
## Mini-C™ Clamp MC0250\*



Self-tightening. Small, light, versatile. Minimum 1-1/2" (38mm) throat clearance reaches around flanges, cowls, pinch welds and lips. Butts against panels where only narrow bite is available. 1-1/2" original wedge. Original straight cut tooth design.

| SPECIFICATIONS:   |                                        |
|-------------------|----------------------------------------|
| Capacity:         | 5 Ton (4,536 kg)                       |
| Gripping Surface: | 1-1/2" wide (38mm)<br>3/4" deep (19mm) |
| Overall Length:   | 8-1/2" (216mm)                         |
| Weight:           | 6 lbs. (2.72 kg)                       |

## Jr.® Clamp MC0300\*

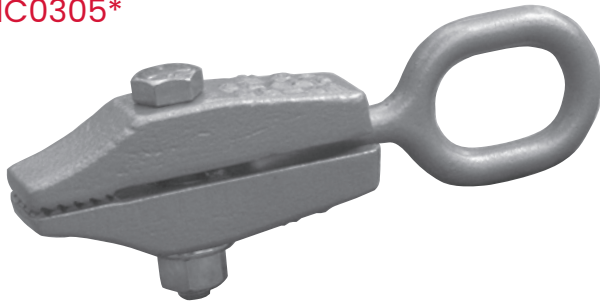


Self-tightening. A must for everybody. 1-1/2" wide bite for aggressive pulling. Original wedge. New angled tooth design.

| SPECIFICATIONS:   |                                        |
|-------------------|----------------------------------------|
| Capacity:         | 5 Ton (4,536 kg)                       |
| Gripping Surface: | 1-1/2" wide (38mm)<br>3/4" deep (19mm) |
| Overall Length:   | 9" (229mm)                             |
| Weight:           | 5 lbs. (2.27 kg)                       |

# CLAMPING ACCESSORIES

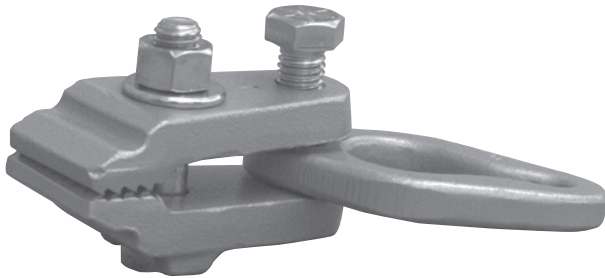
## Dyna-Mo™ Jr. Clamp MC0305\*



Self-tightening. Thin edge nose for getting into hard-to-reach places. Drop-forged round wedge to keep twist out of chain. Aggressive cross-hatch tooth design. Spring-loaded for easy opening.

| SPECIFICATIONS:   |                                      |
|-------------------|--------------------------------------|
| Capacity:         | 3 Ton (2,722 kg)                     |
| Gripping Surface: | 1-1/4" wide (32mm)<br>1" deep (25mm) |
| Overall Length:   | 7" (178mm)                           |
| Weight:           | 2 lbs. (.91 kg)                      |

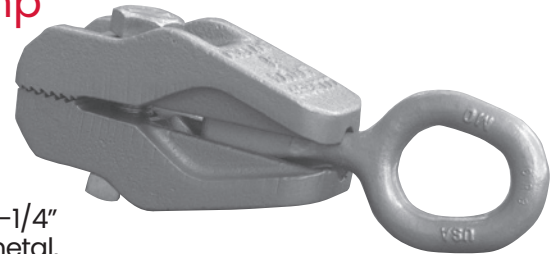
## A™ Clamp with Pull Ring MC0053\*



Narrow seams and ridges. Hardened steel cross-hatch teeth assure a secure pull. Excellent for use with slide hammer. Raised "bolt stoppers" to hold bolts stationary for easy tightening. Includes pull ring for easy chain hook-up that swivels. Use only with 1/4" chain.

| SPECIFICATIONS:   |                                        |
|-------------------|----------------------------------------|
| Capacity:         | 3 Ton (2,722 kg)                       |
| Gripping Surface: | 1-1/2" wide (38mm)<br>3/4" deep (19mm) |
| Overall Length:   | 3-1/2" (89mm)                          |
| Weight:           | 2 lbs. (.91 kg)                        |

## B® Clamp MC0100\*

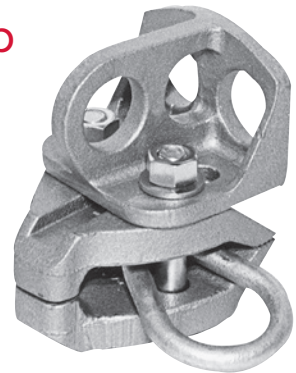


Self-tightening. The body-man's right arm. Grabs 2-1/4" (57mm) of metal, making it ideal for hard pulls on heavy metal or frame. Original wedge. Original straight cut tooth design.

| SPECIFICATIONS:   |                                      |
|-------------------|--------------------------------------|
| Capacity:         | 6 Ton (5,443 kg)                     |
| Gripping Surface: | 2-1/4" wide (57mm)<br>1" deep (25mm) |
| Overall Length:   | 9-1/2" (241mm)                       |
| Weight:           | 7 lbs. (3.18 kg)                     |

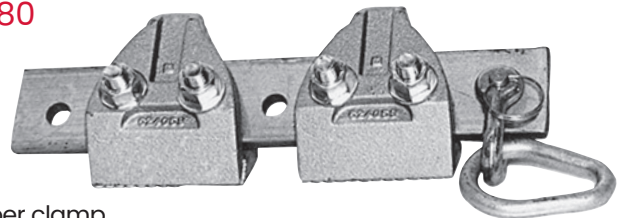
## All Angle Clamp 611899

One of the most versatile clamps you can use. Installs in seconds for pulls at any angle. Breaks down for various set-up combinations.



| SPECIFICATIONS:   |                                     |
|-------------------|-------------------------------------|
| Capacity:         | 6 Ton (5,443 kg)                    |
| Gripping Surface: | 4" wide (102mm)<br>5/8" deep (15mm) |
| Overall Length:   | 6" (152mm)                          |
| Weight:           | 11 lbs. (5 kg)                      |

## Unitized Body Clamp 611880



A super clamp designed to secure unitized body vehicles and much more. This accessory will be one of the most used in your shop. Components are used singularly in some clamping situations.

| SPECIFICATIONS:   |                                     |
|-------------------|-------------------------------------|
| Capacity:         | 5 Ton (4,536 kg)                    |
| Gripping Surface: | 8" wide (203mm)<br>5/8" deep (16mm) |
| Overall Length:   | 18-3/4" (476mm)                     |
| Weight:           | 20 lbs. (9 kg)                      |

# CLAMPING ACCESSORIES

## 2" Self-Tightening Clamp 672034

This model has a 2" (50mm) throat so it will go over a flange and pull. No more welding a plate on the damaged area for a pull.



### SPECIFICATIONS:

|                   |                                    |
|-------------------|------------------------------------|
| Capacity:         | 5 Ton (4,536 kg)                   |
| Gripping Surface: | 2" wide (51mm)<br>3/4" deep (19mm) |
| Overall Length:   | 9" (228mm)                         |
| Weight:           | 8 lbs. (3.6 kg)                    |

## 1-1/2" Self-Tightening Clamp 672000

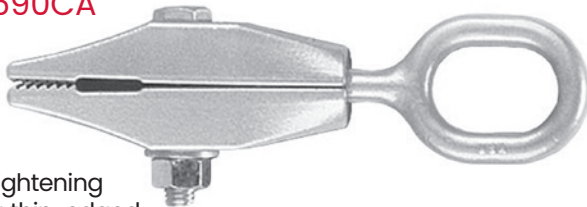


Here's the clamp you'll use every day. It's designed to get in tight places no other clamp will go and yet, you'll never use a wrench to tighten it. Made of high quality steel. 1-1/2" (38mm) throat.

### SPECIFICATIONS:

|                   |                                        |
|-------------------|----------------------------------------|
| Capacity:         | 5 Ton (4,536 kg)                       |
| Gripping Surface: | 1-1/2" wide (38mm)<br>5/8" deep (16mm) |
| Overall Length:   | 9" (228mm)                             |
| Weight:           | 6 lbs. (2.7 kg)                        |

## Mini Bite-Tite Clamp CL0690CA



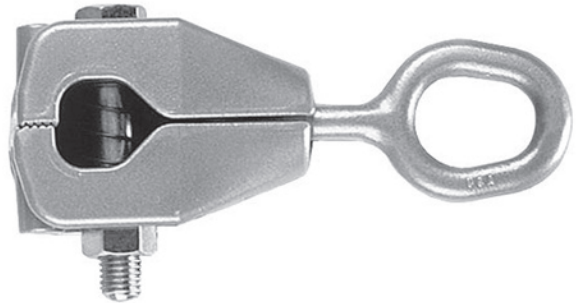
Self-tightening with a thin-edged nose for getting into those hard-to-reach places. Drop-forged round wedge keeps twists out of chain.

Aggressive cross-hatch tooth design and spring-loaded for easy opening.

### SPECIFICATIONS:

|                   |                                         |
|-------------------|-----------------------------------------|
| Capacity:         | 3 Ton (2.7t)                            |
| Gripping Surface: | 1-1/4" wide (3mm)<br>27/32" deep (21mm) |
| Overall Length:   | 8" (203mm)                              |
| Weight:           | 3 lbs. (1.36 kg)                        |

## Bite-Tite C Clamp CL1290CA

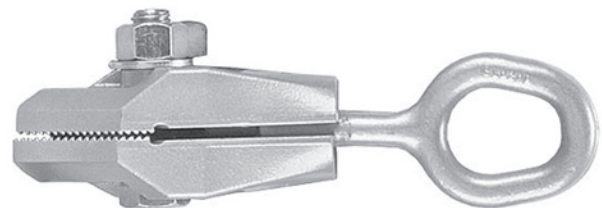


Self-tightening. Small, light and versatile. Designed to provide a big pull in a small area. Has a minimum of 1-1/2" (38mm) throat clearance to reach around flanges, cowls, pinch welds and lips. Butts against panels where only a narrow bite is available.

### SPECIFICATIONS:

|                   |                                           |
|-------------------|-------------------------------------------|
| Capacity:         | 6 Ton (5.4t)                              |
| Gripping Surface: | 1-1/16" wide (52mm)<br>27/32" deep (14mm) |
| Overall Length:   | 9-3/8" (238mm)                            |
| Weight:           | 7 lbs. (3.2 kg)                           |

## Angle Bite-Tite Clamp CL1590CA



Self-cleaning, self-tightening clamp with a gator tooth design and a 45-degree head for those hard-to-pull areas. Drop-forged wedge for extra durability and long life.

### SPECIFICATIONS:

|                   |                                         |
|-------------------|-----------------------------------------|
| Capacity:         | 6 Ton (5.4t)                            |
| Gripping Surface: | 2-15/16" wide (74mm)<br>3/8" deep (9mm) |
| Overall Length:   | 10-3/16" (259mm)                        |
| Weight:           | 6 lbs. (2.7 kg)                         |



# SPECIALTY CLAMPING SYSTEMS

## UNIVERSAL CLAMPING SYSTEM & ACCESSORIES

### Universal Clamping System

392000 16" to 19" Mounting Bracket

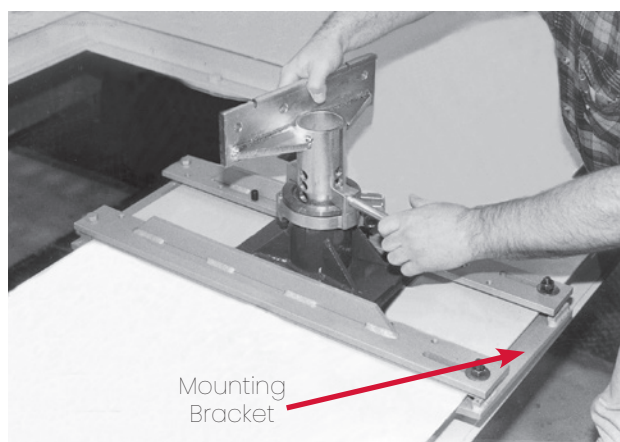
392001 19" to 22" Mounting Bracket

392002 22" to 25" Mounting Bracket

392003 25" to 28" Mounting Bracket

392004 28" to 31" Mounting Bracket

For use with EZ Liner or other pulling systems to which mounting brackets attach.



### Special UAS Stand

499107

Set of 4 with tubes

509000

Single tube

509006

Set of 4 tubes

Set of four anchoring stands to be installed at corners of vehicle's center section. When used in conjunction with mounting brackets, these stands provide positive anchoring of unitized body vehicles.

### Universal Adapter Tube and Clamp Jaws For UAS Stand 509006

Four specially designed adapter tubes fit within Universal Anchoring Stands.

Adapter tubes not only allow use of clamping system accessories on EZ Liner repair systems

but also position vehicle at datum height required for Universal Measuring System usage. Weight: 73 lbs. (32.85 kg)

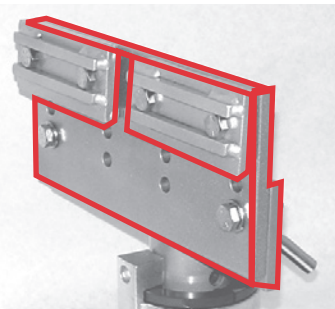


### Datum Height Clamping Adapter 519330

Set of four adjustable plates used in conjunction with basic anchoring stands to secure various vans and sport utility vehicles either 2-inches (50mm) or

3-inches (75mm) above datum height for installation of Universal Measuring System.

Weight: 44 lbs. (19.8 kg)

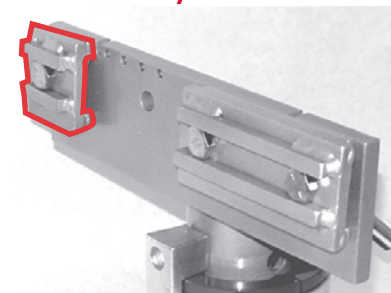


### Half Clamp Assembly 519600

Set of four half-sized clamps (two left/two right) that are used in conjunction with existing pinch weld clamps. Allows anchoring stand to

straddle minor obstructions along vertical pinch weld. Includes: 518700 - Half Clamp, left / 518701 - Half Clamp, right

Weight: 4 lbs. (1.8 kg)



# SPECIALTY CLAMPING SYSTEMS

## Universal Anchoring System

(Metric) 702083 – Set of 4 Stands (EZ Liner)

For use with EZ Liner Repair Systems.

Set of four anchoring units to be installed at the corners of the vehicle's center section.

Weight: 176 lbs. (79.2 kg)



## Tall Anchoring Stand

673688 – 1 Stand

Allows anchoring of high ground clearance vehicles. Allows adjustment of tubes to vehicle's datum height or other appropriate measuring height.

Weight: 58 lbs. (26.10 kg)

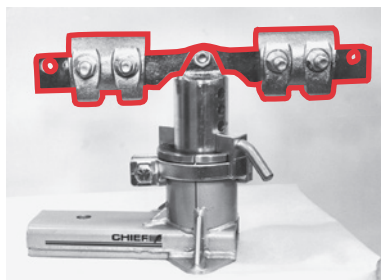


## Pinch Weld Clamps With Clamp Bar Assembly 611952

One each. Standard pinch weld mounting clamps and bar for UAS.

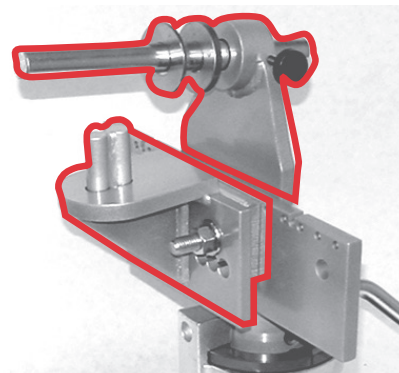
Requires anchoring tube (Part No. 532241)

Weight: 19 lbs. (8.55 kg)

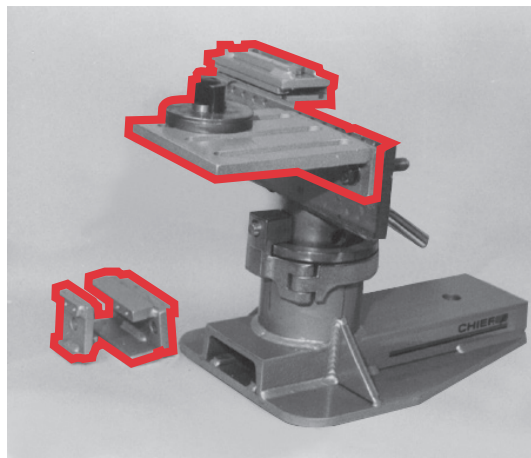


## BMW Clamping Adapters (3, 7, 8) With Side Jack Lifting Holes 519070\*

Set of four adapters (two front and two rear) used to secure vehicles with jack tubes and lift pad fixture holes in rocker (sill) panels. Round spacers and flats shown in photo. Weight: 70 lbs. (31.5 kg)



## BMW Clamping Adapters (3, 5, z3) Without Side Jack Lifting Holes 519638\*/ 519639\* BMW (x3) adapter add-on pkg.

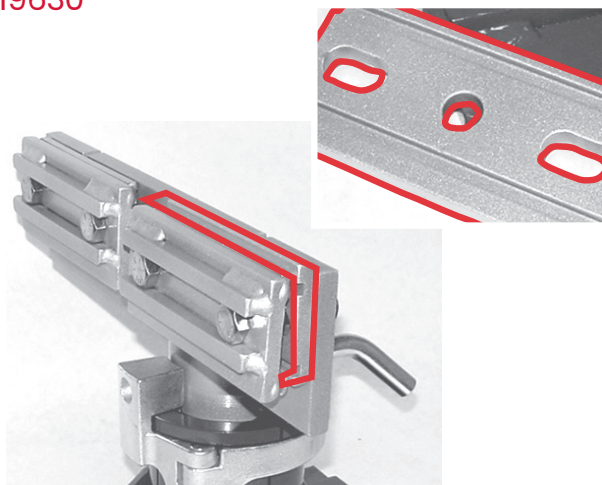


Set of large and small angle supports, spacers, oval hole attachments and assorted clamp jaws designed to mount to holes at bottom of rocker panels. Clamp jaws secure either horizontal or vertical pinch welds near holes in rocker panel. Includes storage box.

Weight: 64 lbs. (28.8 kg)

# SPECIALTY CLAMPING SYSTEMS

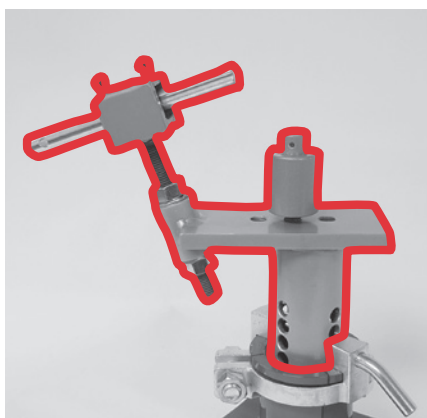
## Drain Channel Spacer 519630



Set of eight specially designed spacers for use on European vehicles with drain channels located on pinch weld. Spacers ensure that bottom of rocker panels sit flush with anchoring stands.

Weight: 10 lbs. (4.5 kg)

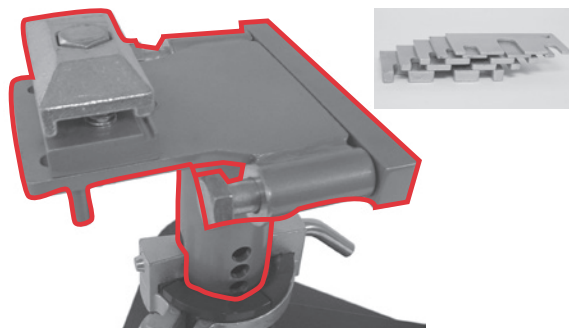
## Mercedes Adapter Package 519558\*



Set of four specially designed anchoring adapters for holding all Mercedes with side jacking tubes and bottom fixture holes.

Weight: 75 lbs. (33.75 kg)

## Universal Honda Adapter 519300\*



Set of four specially designed clamping adapters for anchoring vehicles with vertical jack tabs and horizontal pinch welds.

(Honda/Accord/Acura)

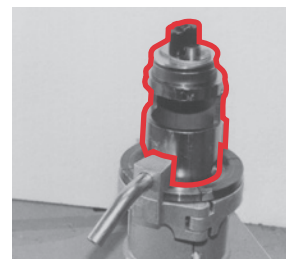
Weight: 74 lbs. (33.3 kg)

## Corvette Adapters 539526\*

Set of four oval hole attachments and cradle mount tubes designed to mount to holes at bottom of rocker panels.

(Chevrolet Corvette - 1997 to current)

Weight: 34 lbs. (15.3 kg)

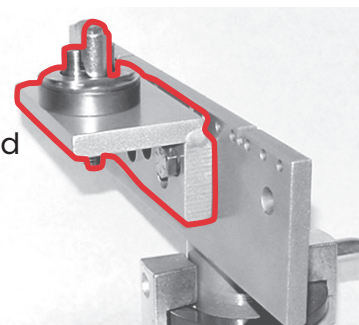


## Corvette Adapters (UMS) 539516\*

Set of four angle brackets and oval hole inserts designed to mount to holes at bottom of rocker panels.

(Chevrolet Corvette - 1997 to current)

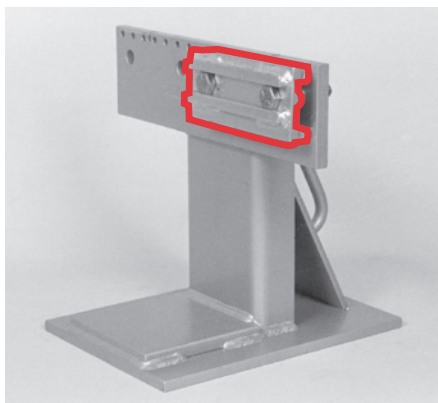
Weight: 24 lbs. (10.8 kg)





# SPECIALTY CLAMPING SYSTEMS

## Saturn/Opel Omega Clamp 519610\*



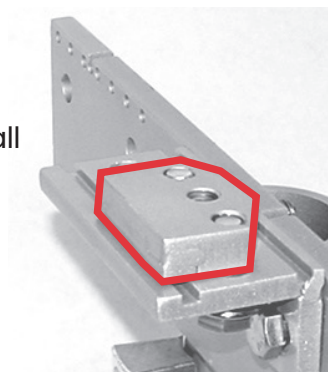
Set of four specially designed clamps that can be reversed dependent upon configuration of pinch weld lip.

Weight: 11 lbs. (4.95 kg)

## Clamp Jaw, Low Profile 498106 – One

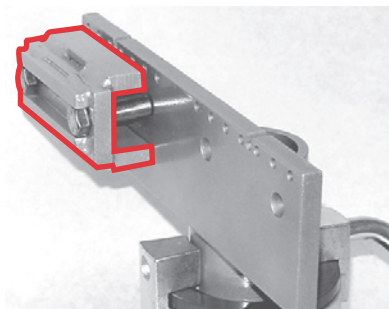
A specially designed clamp jaw used in conjunction with small angle supports to secure horizontal pinch welds.

Weight: 3 lbs. (1.36 kg)

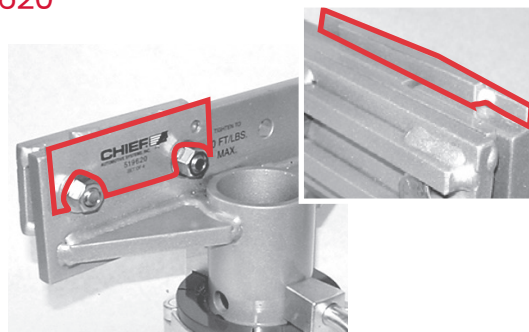


## Special Clamp Jaw PP 519650

Set of two specially designed clamps that fasten to pinch weld at front of center section. Deep cavity allows clamp to reach over lip of oval hole at point of attachment. (Chrysler Cirrus/Dodge Stratus, Mustang Convertible.)  
Weight: 6 lbs. (2.7kg)



## Volkswagen Spacers 519620



Set of four specially designed spacers (two right/two left) used in conjunction with system's standard clamp jaws when attaching to Volkswagen pinch welds. Spacers ensure that bottom of rocker panels sit flush with anchoring stands.

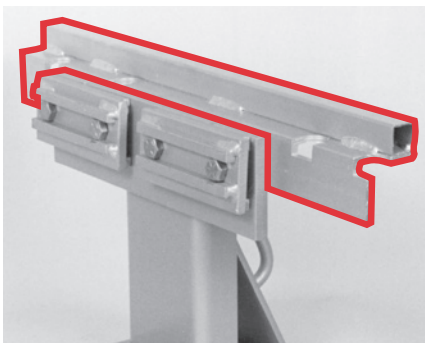
(VW Polo – European model only)

Weight: 2 lbs. (.91 kg)



# SPECIALTY CLAMPING SYSTEMS

## Porsche Front Support 519030\*



Set of two specially designed brackets (right and left) that support wide rocker (sill) panels at front of center section.

(For all Porsche 911 models)

Weight: 15 lbs. (6.81 kg)

## Porsche Rear Mount Adapter Tube for UAS

519045 \* – For '89 Porsche to current

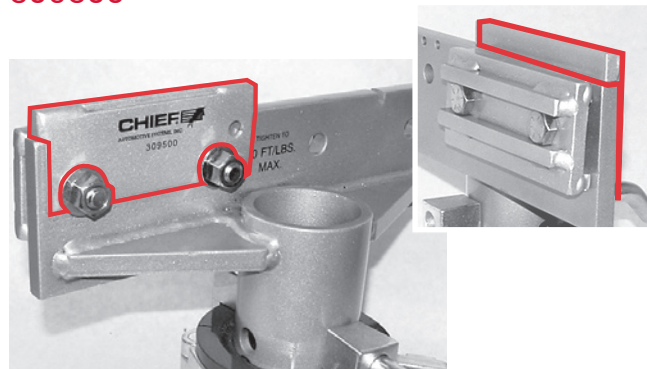


Set of two specially designed anchoring stands (right/left) that clamp to slanted pinch welds at rear of vehicle's center section.

(Porsche 911 models – 1989 to present)

Weight: 22 lbs. (9.9 kg)

## X-Body Clamping Adapter 309500

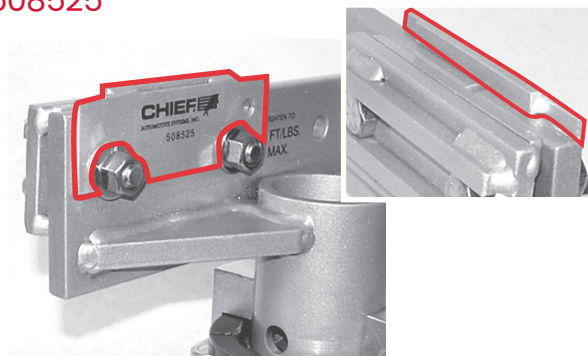


A specially designed clamping adapter that supports irregularly shaped rocker (sill) panels directly above pinch weld clamp. Adapter ensures bottom of rocker panel sits flush with anchoring stand.

Sold individually.

Weight: 1 lb. (.45kg)

## K-Body Clamping Adapter 508525\*



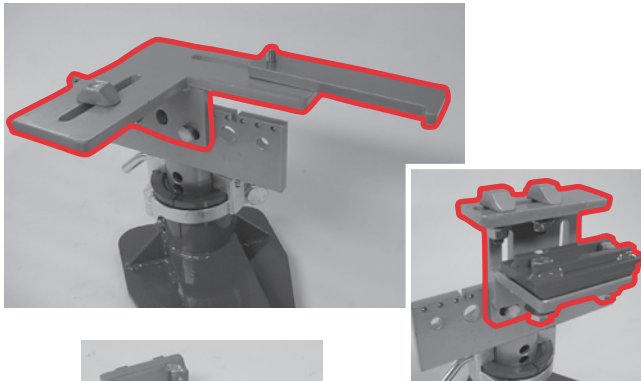
A specially designed clamping adapter that supports irregularly shaped rocker (sill) panels directly above pinch weld clamp. Adapter ensures bottom of rocker panel sits flush with anchoring stand.

Sold individually.

Weight: 1 lb. (.45 kg)

# SPECIALTY CLAMPING SYSTEMS

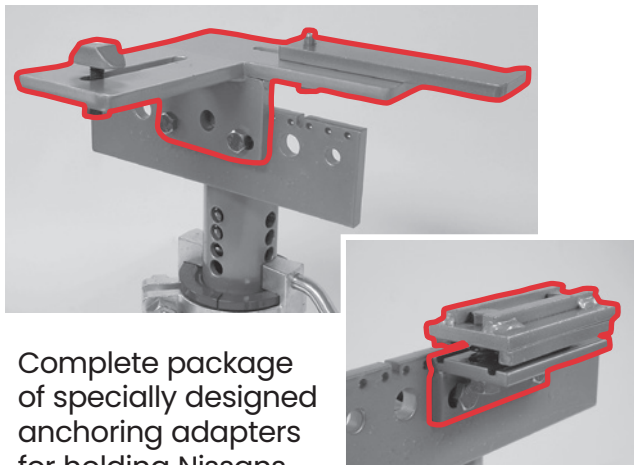
## Renault Megane Adapter Set 519757\*



With 1/2 Clamp  
Assembly and Tube

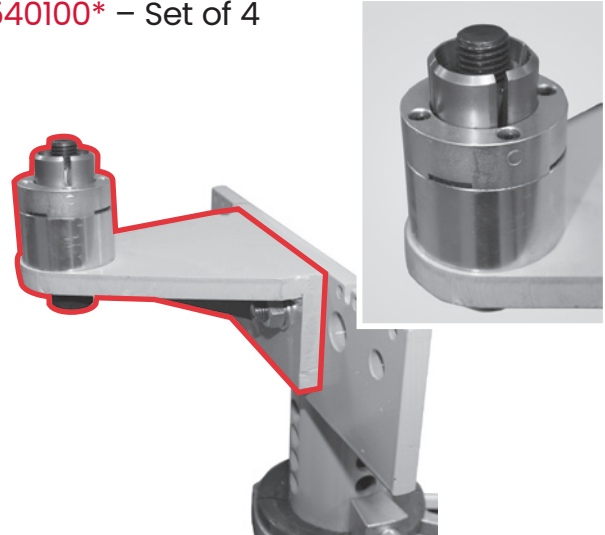
Complete package of specially designed  
adapters for holding the Renault Megane.  
Weight: 55 lbs. (24.75 kg)

## Nissan Clamp Adapter Package 519775\*



Complete package  
of specially designed  
anchoring adapters  
for holding Nissans  
without pinch welds.  
Weight: 34 lbs. (15.3 kg)

## Torque Box Holding Package 540101\* – One 540100\* – Set of 4



Designed for 28-32mm holds.  
Used on various European vehicles.  
Weight: 48 lbs. (21.77 kg)

# PULLING ACCESSORIES

## Universal Cluster Hook Assembly PFCACHA1\*

One assembly...many applications. Eliminate wasted time fumbling around looking for the correct assembly.

### Grab Hook

Allows for easy securing and/or additional lengths of chain

#### SPECIFICATIONS:

|           |                  |
|-----------|------------------|
| Capacity: | 3 Ton (2.7t)     |
| Weight:   | 4 lbs. (1.82 kg) |

### "J" Hook

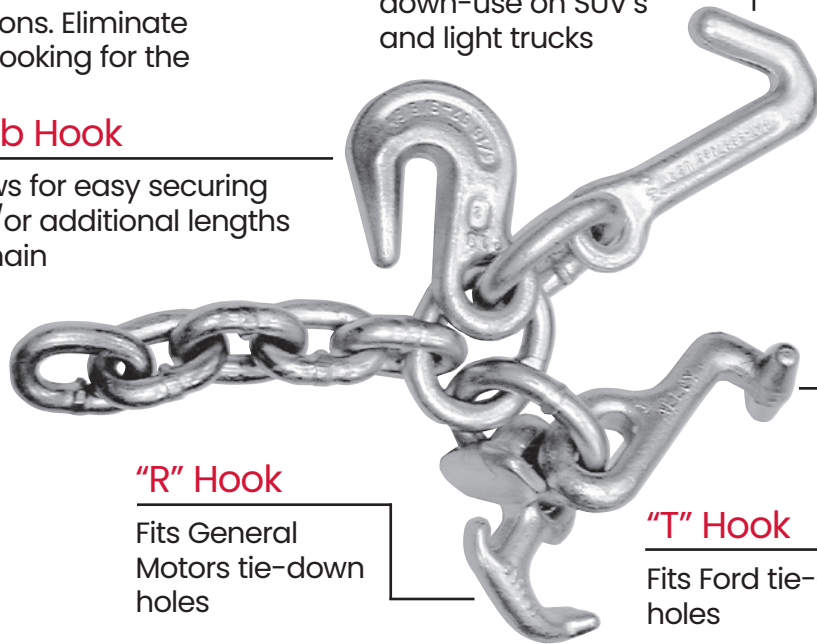
Most universal tie-down-use on SUV's and light trucks

### "R" Hook

Fits General Motors tie-down holes

### "T" Hook

Fits Ford tie-down holes



## Regular Sill Hook Set MC6400\*

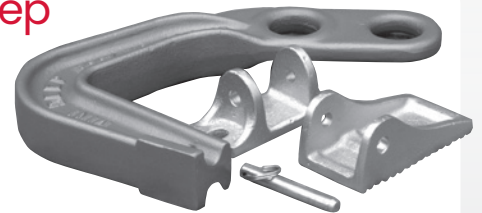
The perfect accessory for reaching around obstacles like frame rails, hinge pillars, etc. The interchangeable feet allow the hook to be used virtually anywhere.



#### SPECIFICATIONS:

|                 |                   |
|-----------------|-------------------|
| Capacity:       | 5 tons (4,536 kg) |
| Overall Length: | 19" (482mm)       |
| Weight:         | 20 lbs. (9 kg)    |

## Jumbo Deep Hook Set MC6410\*



#### SPECIFICATIONS:

|                 |                   |
|-----------------|-------------------|
| Capacity:       | 4 Ton (3,629 kg)  |
| Throat Depth:   | 10" (254mm)       |
| Throat Opening: | 15" (381mm)       |
| Overall Length: | 21" (533mm)       |
| Weight:         | 21 lbs. (9.52 kg) |

## Chain Snugger MC6600\*

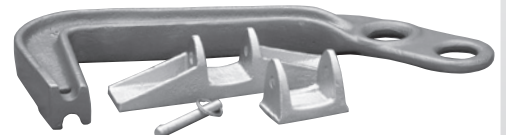
Tightens chain when used with a chain locking fork.



#### SPECIFICATIONS:

|                 |                  |
|-----------------|------------------|
| Capacity:       | 6 Ton (5,443 kg) |
| Overall Length: | 12" (305mm)      |
| Weight:         | 6 lbs. (2.72 kg) |

## Mini Deep Hook Set MC6420\*



#### SPECIFICATIONS:

|                 |                   |
|-----------------|-------------------|
| Capacity:       | 4 Ton (3,629 kg)  |
| Throat Depth:   | 6" (152mm)        |
| Throat Opening: | 9" (229mm)        |
| Overall Length: | 13" (330mm)       |
| Weight:         | 15 lbs. (6.81 kg) |

# PULLING ACCESSORIES

## 30" Sling w/Pear and Triangle MC6302\*

Protects finish from marks. Wraps around and protects pillars while spreading force. Forged pull loops for exceptional toughness.



| SPECIFICATIONS: |                      |
|-----------------|----------------------|
| Vertical:       | 2,400 lbs (1,088 kg) |
| Choke:          | 1,500 lbs (680 kg)   |
| Basket:         | 4,000 lbs (1,814 kg) |
| Overall Length: | 31" (790mm)          |
| Weight:         | 4 lbs. (1.8 kg)      |

## Door Post Puller/Twister MC5616\*

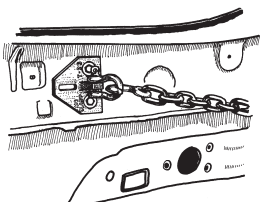
Designed to put a twist in your pull with its "V" shaped gusset. Three positions to choose from. For use on bolt-type hinge pillars.



| SPECIFICATIONS: |                                |
|-----------------|--------------------------------|
| Capacity:       | 2 Ton (1,814 kg)               |
| Overall Length: | 5-1/4" (133mm)                 |
| Slots:          | 1/2" x 1-1/2"<br>(12mm x 39mm) |
| Weight:         | 2 lbs. (.91 kg)                |

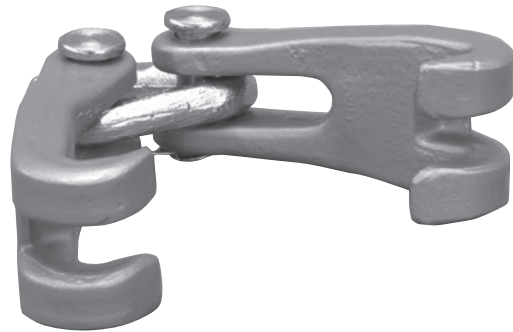
## Hinge Plate MC5623\*

Use in existing holes in frame structure or body panels. Comes with 3/8" shackle for angle pulls.



| SPECIFICATIONS: |                  |
|-----------------|------------------|
| Capacity:       | 3 Ton (2,722 kg) |
| Overall Length: | 4" (101mm)       |
| Weight:         | 2 lbs. (.91 kg)  |

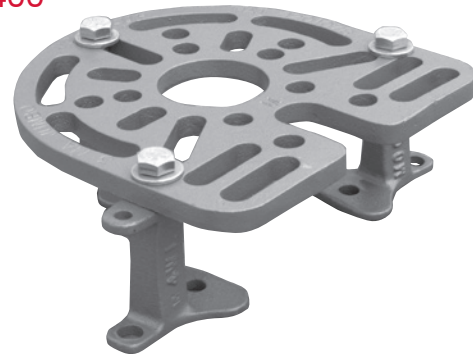
## Double Looper MC4150\*



Two single claws with triangle. Grabs bumpers or panels. Easy 3/8" chain connection. Triangle allows for center pull.

| SPECIFICATIONS: |                  |
|-----------------|------------------|
| Capacity:       | 5 Ton (4,536 kg) |
| Overall Length: | 10" (254mm)      |
| Weight:         | 3 lbs. (1.36 kg) |

## 3MA™ Multi-Adapter Plate MC2400\*



Designed for a wide variety of strut towers. Permits fast hook-up and pulling in any direction. Allows center strut tower measurements with tram gauge and gives added versatility for pulling over and around obstructions. Includes three 4-way legs with four hole sizes to accommodate most vehicles.

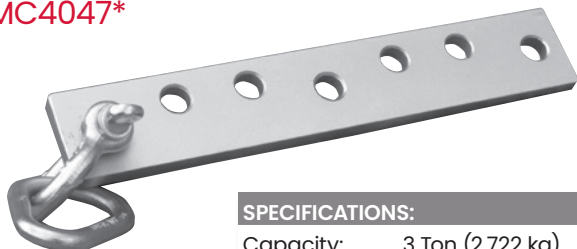
| SPECIFICATIONS: |                   |
|-----------------|-------------------|
| Capacity:       | 5 Ton (4,536 kg)  |
| Overall Length: | 9" (228mm)        |
| Weight:         | 11 lbs. (4.99 kg) |



# PULLING ACCESSORIES

## DRAW BARS

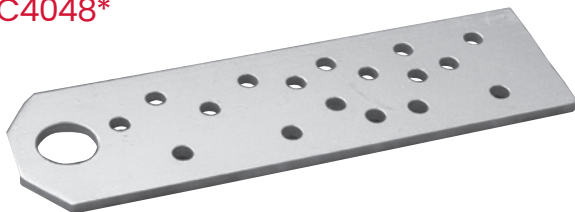
### Frame Rack Draw Bar With Shackle and Oval Loop MC4047\*



#### SPECIFICATIONS:

|                 |                  |
|-----------------|------------------|
| Capacity:       | 3 Ton (2,722 kg) |
| Overall Length: | 14-1/2" (368mm)  |
| Weight:         | 5 lbs. (2.27 kg) |

### Many Hole Wide Draw Bar MC4048\*



#### SPECIFICATIONS:

|                 |                  |
|-----------------|------------------|
| Capacity:       | 3 Ton (2,722 kg) |
| Overall Length: | 14-1/2" (368mm)  |
| Weight:         | 7 lbs. (3.15 kg) |

### Narrow Draw Bar With Single Claw MC4056\*



#### SPECIFICATIONS:

|                 |                  |
|-----------------|------------------|
| Capacity:       | 3 Ton (2,722 kg) |
| Overall Length: | 13" (330mm)      |
| Weight:         | 4 lbs. (1.81 kg) |

### Junior Versa Hook™ MC1360\*



Designed for use in tight areas, the Junior Versa Hook is only 1-3/4" wide for pulling on rocker panels, door posts, etc. The back lip is used for a tie-down to secure the vehicle during pulls.

The narrow width permits use on frame racks with smaller slots.

#### SPECIFICATIONS:

|                   |                                      |
|-------------------|--------------------------------------|
| Capacity:         | 5 Ton (4,536 kg)                     |
| Gripping Surface: | 1-3/4" wide (45mm)<br>1" deep (25mm) |
| Overall Length:   | 9" (228mm)                           |
| Weight:           | 5 lbs. (2.27 kg)                     |

### Numerous Angle Puller (NAP)™ MC1450\*

Allows pulls from any angle. Just put the bolt through a 1/2" hole and pull. Use with MC2400 Multi-Adapter Plate or with back-up plates. For use with 3/8" chain.



#### SPECIFICATIONS:

|                 |                  |
|-----------------|------------------|
| Capacity:       | 4 Ton (3,629 kg) |
| Overall Length: | 6" (152mm)       |
| Weight:         | 2 lbs. (.91 kg)  |

### Pull Ring MC1500\*

Provides unlimited frame pulls, such as frame horns, brackets, cowl, etc. Has recessed pockets to hold bolts stationary for easy, one-handed tightening.



#### SPECIFICATIONS:

|                 |                  |
|-----------------|------------------|
| Capacity:       | 5 Ton (4,536 kg) |
| Overall Length: | 4-1/2" (114mm)   |
| Weight:         | 2 lbs. (.91 kg)  |

# PULLING ACCESSORIES

## Lip Grip™ With Side Pull Bracket MC0750\*

Multi-purpose clamp with gator teeth for sure, non-slip pulls on any lip. Use the Lip Grip as a sandwich clamp on quarter panels or floor section. The chain loop permits pulling at any angle. Side pull bracket adds a 90° angle for two directional pulling.



### SPECIFICATIONS:

|                   |                                   |
|-------------------|-----------------------------------|
| Capacity:         | 4 Ton (3,629 kg)                  |
| Gripping Surface: | 2" wide (51mm)<br>5" long (127mm) |
| Overall Length:   | 6-1/2" (165mm)                    |
| Weight:           | 7 lbs. (3.18 kg)                  |

## Slim Line Sill Hook® MC1320\*

Pull front hinge pillars, center pillar posts, rear hinge section or any location where you need a broad, thin pulling surface. Drop-forged, with a pulling capacity of 4 tons.



### SPECIFICATIONS:

|                 |                    |
|-----------------|--------------------|
| Capacity:       | 2.5 Ton (2,268 kg) |
| Overall Length: | 11-1/2" (248mm)    |
| Weight:         | 9 lbs (4.1 kg)     |

## Chain Spread Bar MC1150\*



Enables you to make pulls around box rails or other obstacles while maintaining distance between pulling clamps.

### SPECIFICATIONS:

|                 |                  |
|-----------------|------------------|
| Capacity:       | 5 Ton (4,536 kg) |
| Overall Length: | 11" (280mm)      |
| Weight:         | 2 lbs (.91 kg)   |

## Portable Gauges 650205

Update your EZ Liner with these rugged and durable gauges, offering improved line-of-sight for monitoring hydraulic pressure. Part 650205 allows you to connect an auxiliary line to the gauge and the "L" bracket is adjustable to hook into the first deck hole of all EZ Liners.



650205 with quick coupler

## Tower Pinning Plates

### 648800 & 648750

The tower pinning plates act like a cam that lets you put a tower at a specific angle after pressure is applied.



### 648800

Includes 2 small and 2 large for EZ25's, S21 and S21M

Weight: 9 lbs. (4.1 kg)

### 648750

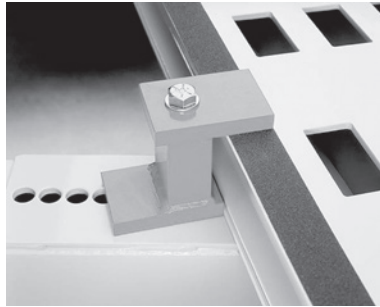
Includes 2 small and 2 large for EZ II and Classic

Weight: 10 lbs. (4.54 kg)

# PULLING ACCESSORIES

## External Tower Bolt-Down Plate 648725 / 648730

The external tower bolt-down plate offers a fast and easy method of bolting down your tower at infinite bolting positions, versus bolting through the deck holes which only offers incremental bolting positions with "dead spots" in between deck holes.



648725 shown

### SPECIFICATIONS:

|         | 648725                      | 648730          |
|---------|-----------------------------|-----------------|
| Use:    | EZ25 Series, EZ II, Classic | S21M, Standard  |
| Weight: | 8 lbs. (3.63 kg)            | 9 lbs. (4.1 kg) |

## Tie-Down Chains 602853 / 602861

A quality 3/8" (10mm) chain designed to withstand the heavy loads. Rigid alloy end hook.



### SPECIFICATIONS:

|         | 602853           | 602861           |
|---------|------------------|------------------|
| Length: | 4" (1.2m)        | 8" (2.4m)        |
| Weight: | 7 lbs. (3.15 kg) | 12 lbs. (5.4 kg) |

## Bumper Puller With Chain 605261



A versatile chain and hook assembly. Allows quick set-up for pulls on frame and unibody vehicles. Wide hook width helps protect metal.  
Weight: 5 lbs. (2.27 kg)

## T-Type Hook With Chain 602749



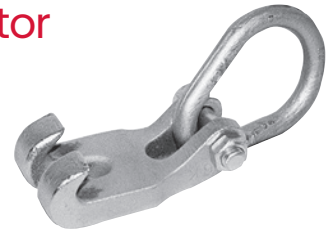
The "T" hook is used for instant tie-downs on unitized and some conventional frame vehicles and is made of heavy duty materials for long life.

Weight: 3 lbs. (1.36 kg)

## Chain Connector 610984

A handy tool that allows fast set-up to tower chains.

Weight: 2 lbs. (.91 kg)



## Double Grab Hook Assembly 619090



Allows technicians to quickly connect or shorten chains.

Weight: 3 lbs. (1.36 kg)

## Chain Shortener 605288

This versatile accessory connects and shortens chains for safer, more accurate pulls.

Weight: 2 lbs. (.91 kg)



## Slotted Chain Hook 619057

A great time saver on set-ups. No chain is too long and no hooks are needed on this chain.

Weight: 2 lbs. (.91 kg)



# PULLING ACCESSORIES

## R-Type Hook With Chain 602757

A must for repairing unitized body vehicles. The "R" hook fits into transport tie-down holes for instant tie-downs or pulls.

Weight: 3 lbs. (1.36 kg)



## Hole Hugger With Chain 605253

A reliable tie-down accessory for most standard frame holds.

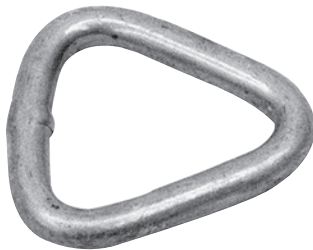
Weight: 7 lbs. (3.18 kg)



## Triangle 605464

Triangle shaped loop is used to link pulling chains to pulling attachments.

Weight: 1 lb. (.45 kg)



## Oval Loop 605480

Oval-shaped loop is used to link pulling chains to pulling attachments.

Weight: 1 lb. (.45 kg)

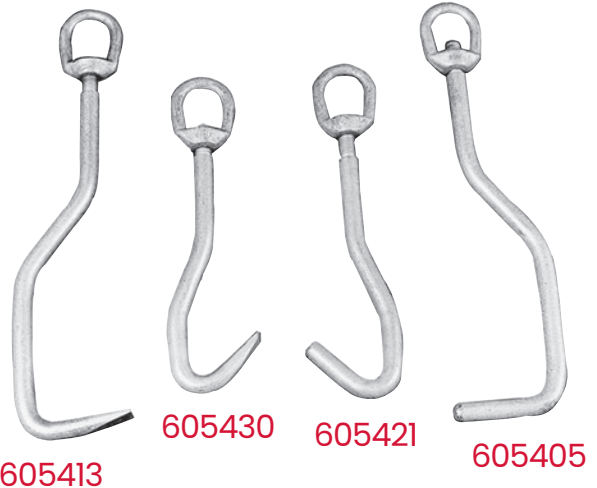


## Sheet Metal Pulling Hooks 605309 - Set of four

Lightweight for fast action and safe pulls on most sheet metal panels. Each hook has a threaded 1/2" nut for set-ups at any angle.

Sheet Metal Pulling Hooks, although 100% tested, are not warranted by Chief.

Weight (set of 4): 9 lbs. (4.1 kg)



### SPECIFICATIONS:

|         | 605413           | 605430          | 605421          | 605405           |
|---------|------------------|-----------------|-----------------|------------------|
| Type:   | Flat             | Flat            | Round           | Round            |
| Length: | 15" (380mm)      | 12" (280mm)     | 11" (280mm)     | 15" (380mm)      |
| Weight: | 3 lbs. (1.36 kg) | 2 lbs. (.91 kg) | 2 lbs. (.91 kg) | 3 lbs. (1.36 kg) |

## C-Type Pull Hooks

Chief's C-Hooks are perfect accessories for reaching around frame structures.

Three sizes designed for accurate pulls for most every angle and repair situation.



**603514**  
Weight:  
33 lbs.  
(14.85 kg)

**603522**  
Weight:  
21 lbs.  
(9.52 kg)

**603530**  
Weight:  
13 lbs.  
(5.85 kg)



# PULLING ACCESSORIES

## Nylon Body 602888



A tough, durable strap that provides a multitude of body pulls in heavy pulling situations where a chain might damage the structure.

### SPECIFICATIONS:

Length: 25" (635mm)

Weight: 5 lbs. (2.27 kg)

## Nylon Fender Strap 602896



Extra long strap for aligning fenders, sheet metal and various body pulls. Tough nylon for long life.

### SPECIFICATIONS:

Length: 43" (1.092mm)

Weight: 3 lbs. (1.36 kg)

## Cable Sling 602909



Reaching those awkward places with a chain is impractical. This sling features extra long looped ends with heavy clamp connections.

### SPECIFICATIONS:

Length: 48" (1.219mm)

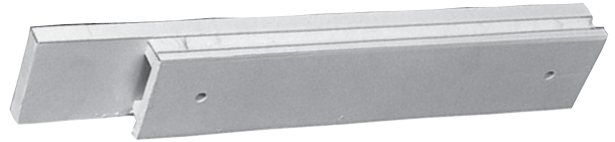
Weight: 2 lbs. (.91 kg)

## Frame Pulling Plate 603240



A variety of holds and slots to align with any conventional frame and many unitized bodies. Heavy duty steel for extra strength.  
Weight: 6 lbs. (2.27 kg)

## Tie-Down Post 610263



Provides solid anchoring from almost any position around the Chief S21 and S21M deck. It's also ideal for use as a "push" base.

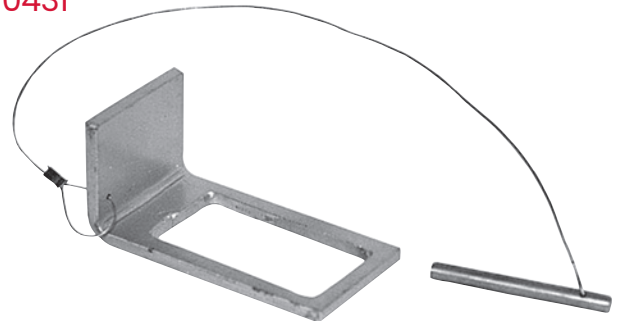
Weight: 37 lbs. (16.65 kg)

### NOTE:

Requires Tie-Down Post Lock Collar, Part #610431.

For use with S21 and S21M only.

## Tie-Down Post Lock Collar 610431



Used in conjunction with the Tie-Down Post.

Weight: 2 lbs. (.91 kg)

NOTE: For use with S21 and S21M only.

## Slotted Chain Anchor 606548

A great time saver, this fast, positive chain anchor can secure a chain quickly to the mainframe.

Weight: 3 lbs. (1.36 kg)



# PULLING ACCESSORIES

## Chief Down-Pull Attachment

697730 - EZ Liner



The down-pull attachment allows operators to make forward, rearward, side and angular down-pulls when used on the machine's treadway. It allows just side down-pulls when used on a cross-member.

Weight: 16 lbs. (7.2 kg)

## Jumbo Pulling Plate With Legs

602669



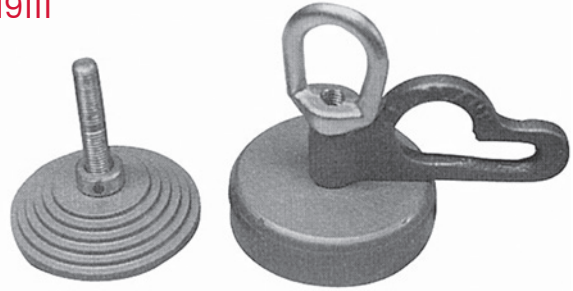
(With 3 Legs)

Includes a multi-adaptable jumbo strut pulling plate and two sets of extension legs to fit most U.S. and global suspensions.

Weight:  
10 lbs. (4.54 kg)

## Boltless Strut Tower Puller

619111



Designed for many European vehicles and the Ford Contour. Easy, fast and reliable method for pulling strut towers. Developed for strut towers without bolts to correct chassis dimensions to factory specifications, strut tower removal is necessary.

Weight: 7 lbs. (3.15 kg)

## Panel Puller

619070



Light and easy to use with slide hammer or pulling post. Use on fender openings, deck lids, door posts and other openings. Heat treated alloy steel.

### SPECIFICATIONS:

|                 |                  |
|-----------------|------------------|
| Capacity:       | 3 Ton (2,722 kg) |
| Overall Length: | 8" (203mm)       |
| Weight:         | 3 lbs. (1.36 kg) |

## Twin Pull

092162



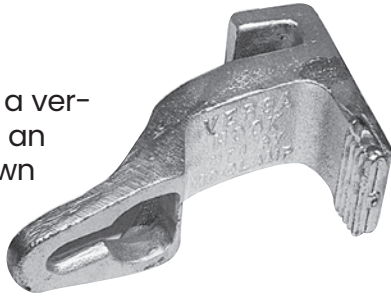
Enables technicians to use two clamps side by side for more pulls. Designed for use with 3/8" chain.

Weight: 2 lbs. (.91 kg)

# PULLING ACCESSORIES

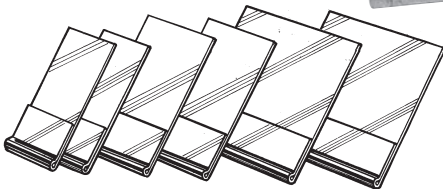
## Versa Hook 092157

This Versa Hook is a versatile tool used as an outer track tie-down to secure vehicles during pulls. Use for pulling rocker panels, door post, windshield posts, etc. Versa Hook end is 2-1/2" wide. Weight: 6 lbs. (2.7 kg)



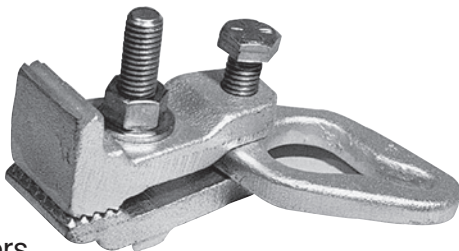
## Tac-N-Pull™ With Pull Plates 092175

Pull plate kit includes:  
10 – 1" Pull Plates  
5 – 1-1/2" Pull Plates  
5 – 3" Pull Plates  
Weight: 3 lbs. (1.36 kg)



## Mini-Bite With Pull Ring 092176

The reversible Mini-Bite Clamp is designed to get around lips and corners for strong pulls and to pull narrow seams and lips. Cross-Hatch tooth design assures a firm grip. 1-1/2" wide. For use with 1/4" chain. Weight: 3 lbs. (1.36 kg)



## Track Hook 092179

Quick tie-down for track systems or back anchoring on frame racks. Lip can be used for pulling damaged areas; multiple uses for chain lengthening or shortening. Slot can be used for chain hook-up. For use with 3/8" chain. Weight: 2 lbs. (.91 kg)



## Quick Hook 092182

Four hole-size selections for quick hook-ups in existing frame holes for pulling of damaged frames. Weight: 3 lbs. (1.36 kg)



# HYDRAULICS & ACCESSORIES

## 10-Ton Low & High Pressure Rams



### 10-Ton High Pressure Rams

| Part No. |                                | Length     | Weight            |
|----------|--------------------------------|------------|-------------------|
| 601196   | Dual acting low pressure ram   | 4" (100mm) | 9 lbs. (4.1 kg)   |
| 601197   | Dual acting low pressure ram   | 6" (150mm) | 14 lbs. (6.3 kg)  |
| 450479   | Single acting low pressure ram | 4" (100mm) | 9 lbs. (4.1 kg)   |
| 450441   | Single acting low pressure ram | 6" (150mm) | 13 lbs. (5.85 kg) |

### 10-Ton High Pressure Rams

| Part No. | Length     | Collapsed Length | Weight          |
|----------|------------|------------------|-----------------|
| 601877   | 4" (100mm) | 5-1/16" (130mm)  | 9 lbs. (4.1 kg) |
| 602360   | 6" (150mm) | 11-1/2" (290mm)  | 11 lbs. (5 kg)  |

## Ram Base 611303

Holds Chief rams #602360 and #601877 perpendicular to mainframe when lifting vehicle or making down pulls. Reduces the possibility of ram tipping over or kicking out.

Weight: 5 lbs. (2.27 kg)

Low Pressure Ram Base #601140 not shown.



### Standard and S1 "Welded Coupling" Model

| Part No. | Description        |
|----------|--------------------|
| 604576   | 3/8" (10mm) Nipple |
| 602474   | 176" (4.4m) Hose   |
| 602802   | 3/8" Valve         |
| 616122   | 7" (70mm) Hose     |
| 602407   | Male Quick Coupler |
| 602360   | 6" (150mm) Ram     |
| 602319   | Male Connector     |
| 602335   | V-Base (2)         |

### Standard EZ Liner Only "Grommet" Model

| Part No. | Description        |
|----------|--------------------|
| 602474   | 176" (4.4m) Hose   |
| 602802   | 3/8" Valve         |
| 616122   | 27" (70mm) Hose    |
| 602407   | Male Quick Coupler |
| 602360   | 6" (150mm) Ram     |
| 602319   | Male Connector     |
| 602335   | V-Base (2)         |

### EZ II / Classic "Welded Coupling" Model

| Part No. | Description        |
|----------|--------------------|
| 602474   | 176" (4.4m) Hose   |
| 602802   | 3/8" Valve         |
| 616122   | 27" (70mm) Hose    |
| 602407   | Male Quick Coupler |
| 602360   | 6" (150mm) Ram     |
| 602319   | Male Connector     |
| 602335   | V-Base (2)         |



# HYDRAULICS & ACCESSORIES

## Auxiliary Ram Add-On Kit

Component required to add an additional portable ram to the Chief EZ Liner. Allows an extra "multi-pull" to handle the really big jobs. Kit includes 6" (150mm) ram, coupler, all hoses and mounting fittings.

NOTE: Includes 3/8" (10mm) nipple and high pressure tee

- not required

for Standard

EZ Liner

"Grommett",

EZ Liner II or Classic Models.

| Part No. | Description   | Weight            |
|----------|---------------|-------------------|
| 691026   | Low Pressure  | 22 lbs. (9.9 kg)  |
| 691024   | High Pressure | 21 lbs. (9.52 kg) |



## Auxiliary Extension Tubes

| Part No. | Description | Weight            |
|----------|-------------|-------------------|
| 601842   | 6" (150mm)  | 2 lbs. (.91 kg)   |
| 601850   | 12" (300mm) | 4 lbs. (1.81 kg)  |
| 601869   | 20" (510mm) | 7 lbs. (3.18 kg)  |
| 601922   | 31" (790mm) | 10 lbs. (4.54 kg) |



## Flat Cap 620840

This attachment protects the ram's threads and serves as a pushing base.

Weight: 1 lb. (.45 kg)



## Threaded Adaptor 602618

Used in conjunction with low and high pressure rams for quick accessory add-ons.

Weight: 1 lb. (.45 kg)



## Threaded Male Connector 602319

Convenient threaded connector for quick accessory add-ons.

Weight: 1 lb. (.45 kg)



## Male Pull Ram Hook 601213

Works with the female pull ram hook in conjunction with the 6-inch dual-acting ram to create a pull arm used on the S2IM and Excelsator.

Weight: 3 lbs. (1.36 kg)



## Female Pull Ram Hook 601214

Works with the male pull ram hook in conjunction with the 6-inch dual-acting ram to create a pull arm used on the S2IM and Excelsator.

Weight: 3 lbs. (1.36 kg)

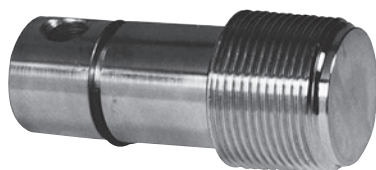


# HYDRAULICS & ACCESSORIES

## Auxiliary Ram Male Coupling 607849

This heavy-duty component enables extension tubing to be added to the ram end.

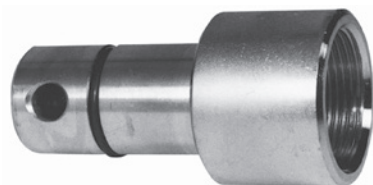
Weight: 2 lbs. (.91 kg)



## Auxiliary Ram Female Coupling 601826

This heavy-duty component enables extension tubing to be added to the ram end.

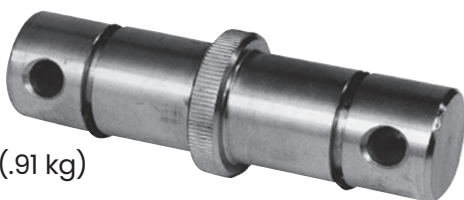
Weight: 2 lbs. (.91 kg)



## Auxiliary Ram Extension 601834

A convenient add-on that connects auxiliary extension tubes for extra length.

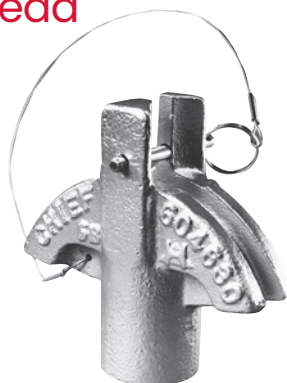
Weight: 2 lbs. (.91 kg)



## Auxiliary Pulling Head 610829

Engineered for hard pulls, this attachment secures the chain to the auxiliary ram and extension tubing.

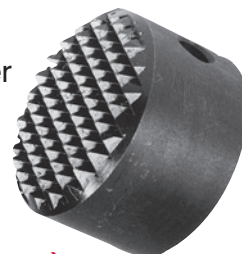
Weight: 4 lbs. (1.81 kg)



## Serrated Saddle 605640

Protects the ram's and other male coupling threads, while perfect for use as a pushing base.

Weight: 1 lb. (.45 kg)



092105 (smooth - not shown)

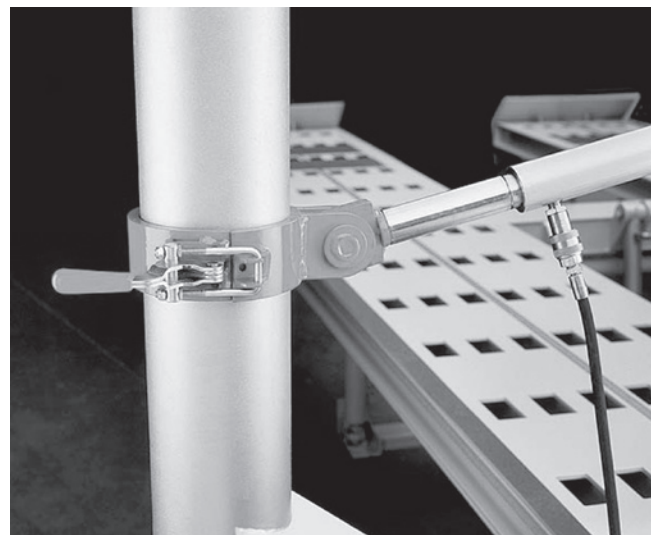
## "V" Base 602335

Designed to protect the ram's threads. The V-Base is ideal for use as a pushing base.

Weight: 2 lbs. (.91 kg)



## Auxiliary Push Attachment 612058



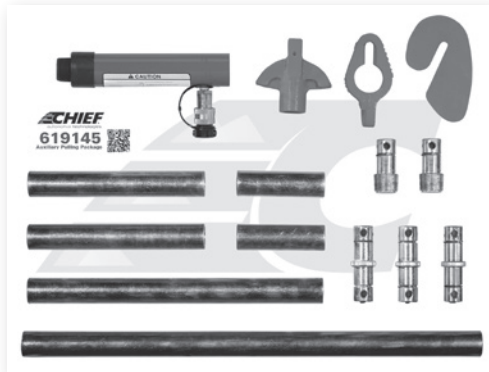
| Part No. | Use                                       | Weight            |
|----------|-------------------------------------------|-------------------|
| 612058   | 10 Ton S21M, Standard and 1-Ton G- Series | 19 lbs. (8.55 kg) |

The Auxiliary Push Attachment provides a secure and convenient method of pushing from a tower with an auxiliary ram.

# HYDRAULICS & ACCESSORIES

## Auxiliary Pulling Package Impulse Tilt 619218

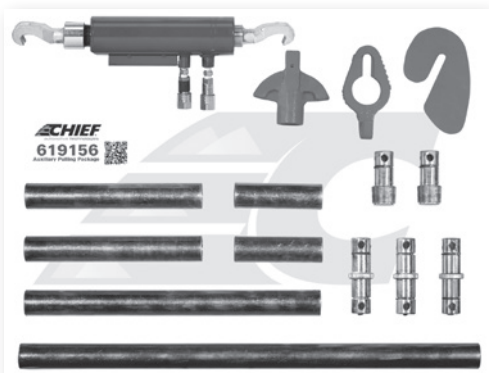
Weight: 89 lbs. (40.05 kg) – wall mounted



| Part No. | Qty. | Description                  |
|----------|------|------------------------------|
| 601834   | 3    | Auxiliary Extension Coupling |
| 601842   | 2    | Auxiliary Extension, 6"      |
| 601850   | 2    | Auxiliary Extension, 12"     |
| 601869   | 1    | Auxiliary Extension, 20"     |
| 601922   | 1    | Auxiliary Extension, 31"     |
| 602335   | 1    | Ram V-Base                   |
| 602360   | 1    | Auxiliary Ram, 6" Stroke     |
| 606548   | 2    | Slotted Chain Anchor         |
| 607849   | 2    | Auxiliary Male Coupling      |
| 610829   | 1    | Auxiliary Pulling Head       |
| 619057   | 1    | Slotted Chain Hook           |

## Auxiliary Pulling Package S21M & Titan 619219

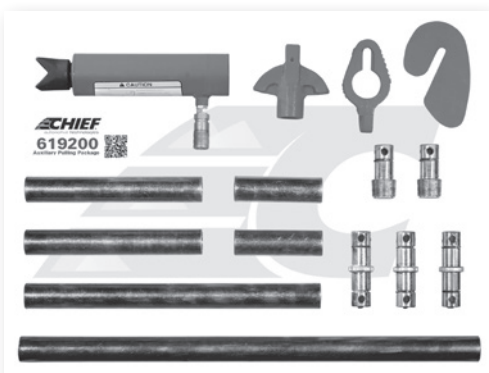
Weight: 114 lbs. (51.3 kg) – wall mounted



| Part No. | Qty. | Description                                 |
|----------|------|---------------------------------------------|
| 601140   | 1    | Auxiliary Ram Base                          |
| 601197   | 1    | Auxiliary Ram, 6" Stroke with Quick Coupler |
| 601213   | 1    | Male / Klaw Assembly                        |
| 601214   | 1    | Female / Klaw Assembly                      |
| 601834   | 3    | Auxiliary Extension Coupling                |
| 601842   | 2    | Auxiliary Extension, 6"                     |
| 601850   | 2    | Auxiliary Extension, 12"                    |
| 601869   | 1    | Auxiliary Extension, 20"                    |
| 601922   | 1    | Auxiliary Extension, 31"                    |
| 602335   | 1    | Ram V-Base                                  |
| 606548   | 2    | Slotted Chain Anchor                        |
| 607849   | 2    | Auxiliary Male Coupling                     |
| 610829   | 1    | Auxiliary Pulling Head                      |
| 619057   | 1    | Slotted Chain Hook                          |

## Auxiliary Pulling Package Impulse E/VHT 619200

Weight: 107 lbs. (48.15 kg) – wall mounted



| Part No. | Qty. | Description                  |
|----------|------|------------------------------|
| 450441   | 1    | Auxiliary Ram, 6" Stroke     |
| 601140   | 1    | Auxiliary Ram Base           |
| 601834   | 3    | Auxiliary Extension Coupling |
| 601842   | 2    | Auxiliary Extension, 6"      |
| 601850   | 2    | Auxiliary Extension, 12"     |
| 601869   | 1    | Auxiliary Extension, 20"     |
| 601922   | 1    | Auxiliary Extension, 31"     |
| 602335   | 1    | Ram V-Base                   |
| 606548   | 2    | Slotted Chain Anchor         |
| 607849   | 2    | Auxiliary Male Coupling      |
| 610829   | 1    | Auxiliary Pulling Head       |
| 619057   | 1    | Slotted Chain Hook           |

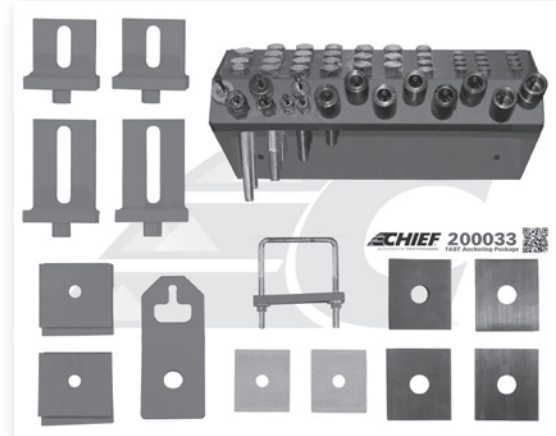
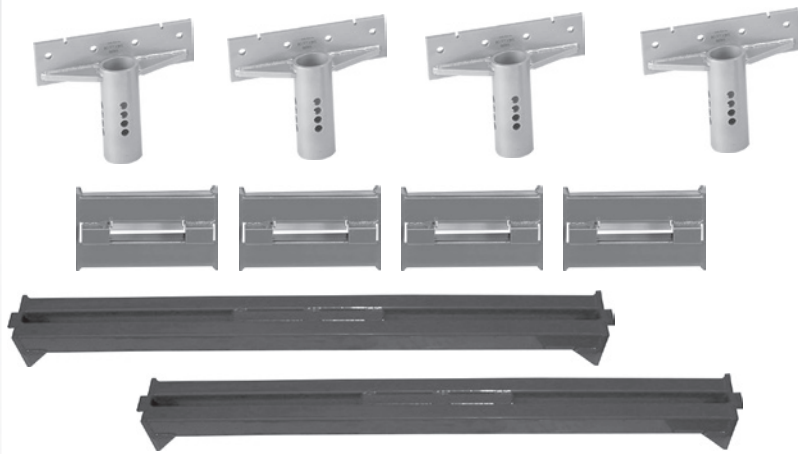
# FAST ANCHORING SYSTEMS & ACCESSORIES

## FAST Anchoring System

619202 – Wall Mount Weight: 540 lbs. (245 kg)

619203 – Cart Mount Weight: 625 lbs. (284 kg)

Anchors the majority of pickup trucks, SUVs and full frame cars when used with Universal Anchoring System (UAS, USC) stands. Design allows broader anchoring points for measuring. Components either allow or prevent rail movement. The system's long crossbars can be rotated to match the slope of any attachment or frame rail.



## FAST Anchoring Upgrade Package 200030



\*Does not include pin, clevis and triangle loop.

The F.A.S.T. Anchoring Upgrade package features several new components plus several other components that were previously available as add-on accessories only. The package includes the Spring Bolt Vise Attachments (with bushings), Rail Vise Attachments, Riser Bars, Turnbuckle Assists, Tie Back Brackets and a Tool Box for equipment storage.

Weight: 150 lbs. (67.5 kg)

## Tool Board Cart 619275M

Tool Boards may be wall-mounted or gain mobility by mounting them to this sturdy Tool Board Cart.

Weight: 100 lbs. (45.36 kg)

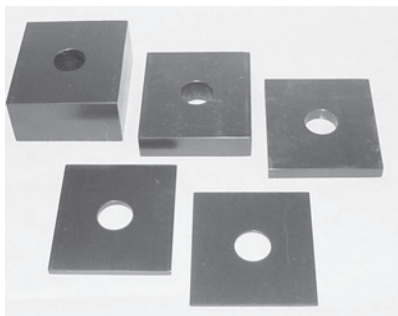




# FAST ANCHORING SYSTEMS & ACCESSORIES

## Spacers

Spacers allow height adjustment of anchoring system components.



**539438** – 4-1/2" x 4" x 1/8"

**539407** – 4-1/2" x 4" x 1/4"

**539408** – 4-1/2" x 4" x 1/2"

**539409** – 4-1/2" x 4" x 1"

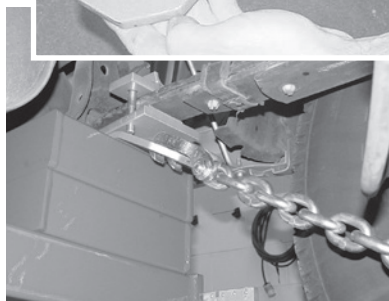
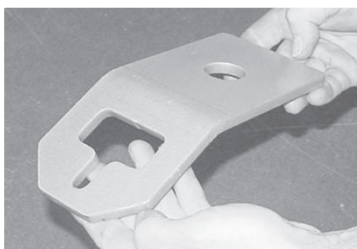
**539410** – 4-1/2" x 4" x 2"

## Tie Back Bracket

**539539**

Tie Back Brackets fit between the attachment and top of riser bar in tall anchoring applications. They provide an ideal hookup point for turn-buckle assist/tie down chain applications.

Weight: 5 lbs.  
(2.27 kg)



## Turnbuckle Assist

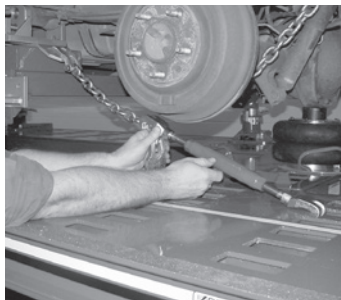
**628220** – One

**539630** – Set of two

Turnbuckle assists provide secondary holding capability when used in conjunction with tie back bracket and tie down chain. Turnbuckles feature a cylindrical center unit with adjustable hooks.

**628220** Weight: 5 lbs. (2.27 kg)

**539630** Weight: 12 lbs. (5.4 kg)



## L Brackets

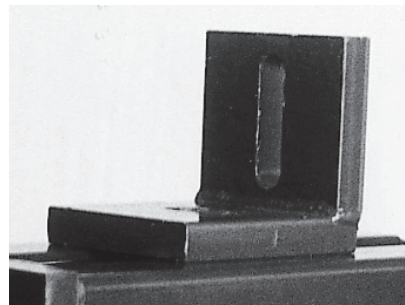
**539404** – One (5 3/4")

**539400** – One (3 1/2")

L-Brackets allow rail movement in direction of pulls or prevent movement in wrong direction. Slot allows access for bolting to rail or for straddling bolt protruding from rail.

**539404** Weight: 6 lbs (2.7 kg)

**539400** Weight: 2 lbs. (.91 kg)

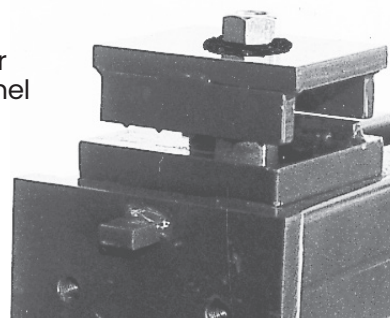


## Horizontal Clamp Assembly

**539360** – One clamp half

**539365** – One base half

Horizontal clamp attaches to lower lip of open channel frame rails.



**539360** Weight: 4 lbs. (1.81 kg)

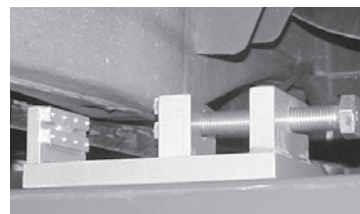
**539365** Weight: 4 lbs. (1.81 kg)

## Narrow Rail Vise

**CK110035** – One

Narrow rail vise secures box-shaped frame rails. It is primarily used in front of vehicle's center section; however, it can be used in rear of center section in some applications.

Weight: 13 lbs.  
(5.85 kg)



# FAST ANCHORING SYSTEMS & ACCESSORIES

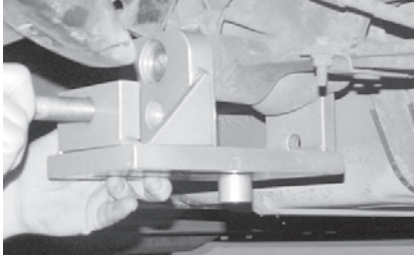
## Spring Bolt Vise

**539341** – One / Weight: 17 lbs. (7.65 kg)

**539342** – Set of two (with bushings)  
Weight: 40 lbs. (18 kg)

**539380** – Set of two (with bushings and tool box)  
Weight: 48 lbs. (21.6 kg)

Spring Bolt Vise attachments mate with the design of spring/trailing arm mount bolts at rear of center section.

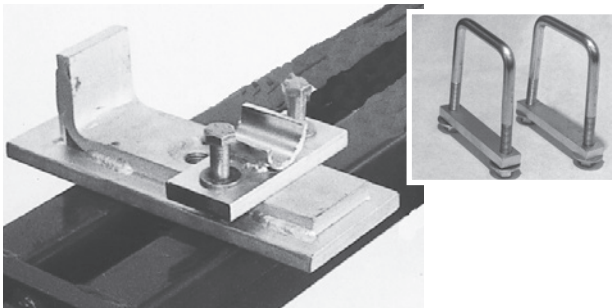


The attachment provides a secure hold and should be used whenever both sides of a spring bolt are accessible.

## Spring Shackle Attachment

**539423** – One

**539327** – U bolt and strap pkg.



Spring Shackle Attachments are used at spring/trailing arm mount locations when space limitations prevent use of spring bolt vise attachments. U-bolts are used with this attachment to secure vehicles with 3-inch wide leaf springs.

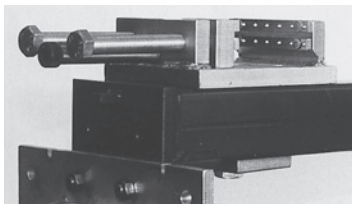
**539423** Weight: 10 lbs. (4.5 kg)

**539327** Weight: 2 lbs. (.91 kg)

## Standard Rail Vise

**539444**

Standard Rail Vise (optional) functions much like the Narrow Rail Vise. The wider jaws of this vise provide



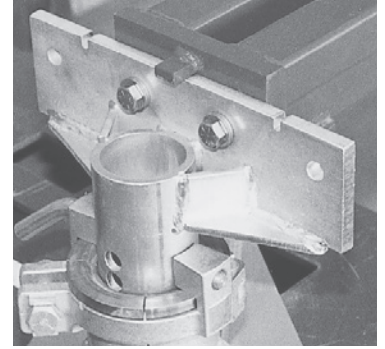
a broader gripping area. The extra width requires the use of two adjustment bolts to secure jaws firmly to a boxed frame rail. Weight: 15 lbs. (6.75 kg)

## Universal Adapter Tube Without Clamps

**508281**

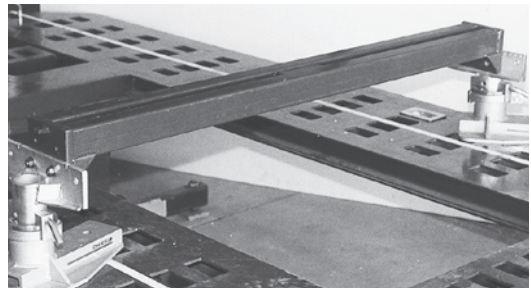
A specially designed tube that fits within Universal Anchoring Stands. Tubes adjust to various heights and provide vertical mounting surface for attachment to the long crossbars.

Weight: 12 lbs. (5.4 kg)



## Long Crossbar

**539415**



Attaches to Universal Adapter Tubes or Universal Clamping System anchoring stands. Serves as a base for all anchoring assemblies. Crossbars measure 63" (1,606mm) long and can be rotated to match the slope of attachments or rails.

Weight: 54 lbs. (24.3 kg)

## Riser Bar

**539541**

Three-inch riser bars provide additional height for drive shaft clearance above



crossbar. The riser bars mate with the channel in the crossbar and may occasionally be stacked two high in some applications. Riser bars can be installed perpendicular to the crossbars to allow rail movement with the pull. (For example: when correcting diamond.)

Weight: 13 lbs. (5.85 kg)

# FAST ANCHORING SYSTEMS & ACCESSORIES

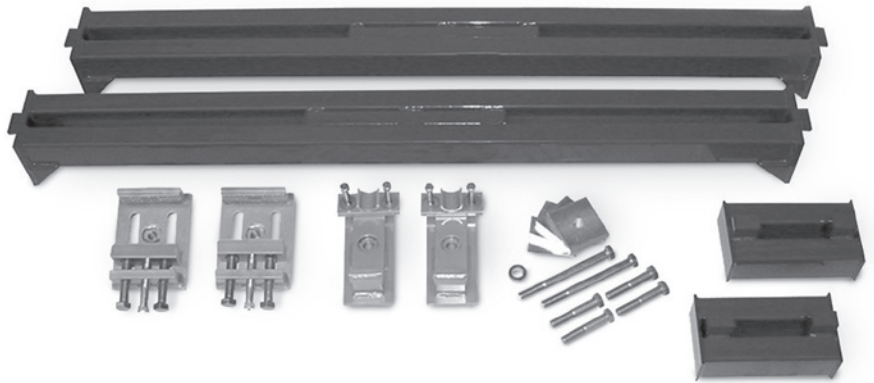
## Econo FAST 200050

**Econo FAST**  
200051 – Upgrade to  
FAST Anchoring System 200033

**Econo FAST**  
200052 – Upgrade to  
FAST Anchoring System 20043

The Econo F.A.S.T. utilizes two Long Bars to provide vehicle support and the Spring Shackle Clamps and Standard Rail Vises to hold many common frame types. If needed, the system can be upgraded to the full fast system for expanded vehicle anchoring capability.

Weight: 250 lbs. (112.5 kg)



### ECONO F.A.S.T. Package Includes:

- 2 Long Crossmember Bars
- 2 Riser Bars
- 4 – 100mm Bolts
- 4 Tie Bolts
- 4 Washers
- 2 – 200mm Bolts
- 2 Spring Shackles
- 2 Rail Vises

## Fast Hole Adapter Package 539385

The accessories in this optional package increase the flexibility of the F.A.S.T. Anchoring System. The hole adapters can be used to prevent fore/aft and lateral movement of rails.

Includes: 20mm Bolts, 35mm Hole Adapter, Offset Hole Adapter, 50mm Hole Adapter Sleeve

Weight: 18 lbs. (8.1 kg)

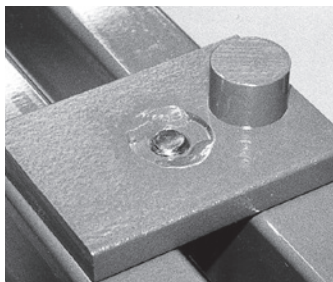
### Offset Hole Adapter 539370 – 35mm

### Offset Hole Adapter Sleeve 539422 – 50mm

Offset Hole Adapters (optional) prevent lateral movement of structural components. The adapter mates with reference holes on underside of frame rails. Diameter of attachment (35mm) can be expanded to 50mm by adding outer sleeve.

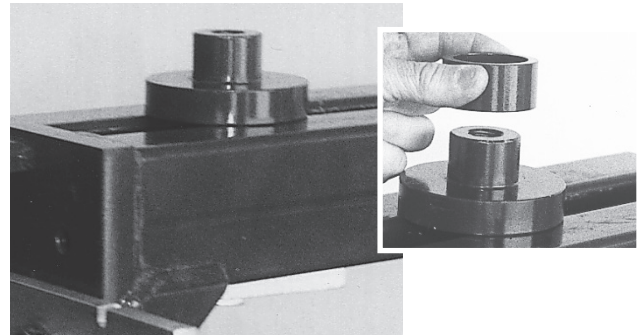
539370 Weight: 5 lbs. (2.27 kg)

539422 Weight: 1 lb. (.45 kg)



## Hole Adapter 539411 – 35mm

### Hole Adapter Sleeve 539422 – 50mm



Standard Hole Adapters (optional) prevent lateral movement of structural components. The adapter mates with reference holes on underside of frame rails. Diameter of attachment (35mm) can be expanded to 50mm by adding outer sleeve.

539411 Weight: 2 lbs. (.91 kg)

539422 Weight: 1 lb. (.45 kg)

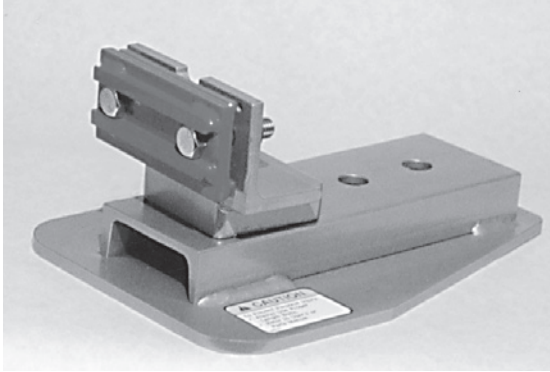


# STREAMLINER ANCHORING SYSTEM & ACCESSORIES

## Basic Anchoring Stand w/Clamp

401420 – One

401054 – Set of four



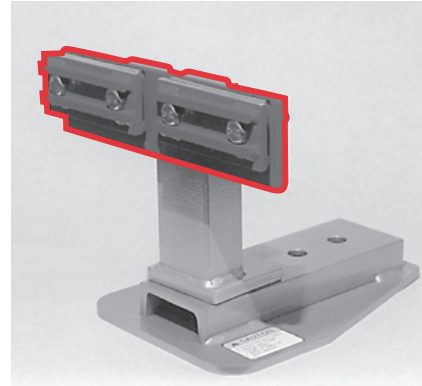
Set of four anchoring stands to be installed at corners of vehicle's center section. Provides positive anchoring of unitized body vehicles when making a pull with a Streamliner System. Clamps mount to vehicle's pinch welds or to T-Tabs welded to frame rails. Stands attach to sliding nut positioned in treadway slot on mainframe.

401420 Weight: 30 lbs. (13.5 kg)

401054 Weight: 120 lbs. (54 kg)

## Dual Clamp Jaws/Bars (Optional)

401026 – Set of four



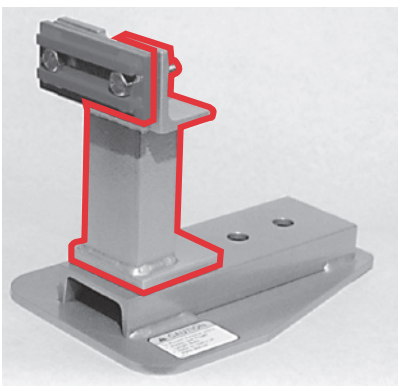
Broadens anchoring capability of stand by allowing the attachment of two four inch clamp jaws to vehicle's pinch weld.

Weight: 9 lbs. (4.05 kg)

---

## Tall Mast (Optional)

401099



Extends height of Streamliner Anchoring Stand and is used primarily whenever vehicle measurements are required.

Weight: 9 lbs. (4.05 kg)



# TOOL BOARD PACKAGES

Chief Tool Board Packages feature the most innovative tools for repair of today's vehicles. These pulling accessories are available in various configurations, offering maximum versatility to keep pace with the evolution of automotive design. You can make precise pulls on hundreds of unitized and conventional frame models while minimizing the possibility of structural distortion.

## Tool Board Cart 619275M

Chief Tool Boards may be wall-mounted or gain mobility by mounting them to this sturdy Tool Board Cart. Weight: 100 lbs. (45.36 kg)



## Basic Chain Package

619209 Weight: 60 lbs. (27 kg) – wall mounted



| Part No. | Qty. | Description                                |
|----------|------|--------------------------------------------|
| 602853   | 2    | Chain, Tie-Down, 3/8" x 4' w/Hook          |
| 602861   | 2    | Chain, Tie-Down, 3/8" x 8' w/Hook          |
| 606548   | 2    | Slotted Chain Anchor                       |
| 610984   | 1    | Chain Connector                            |
| 619251   | 1    | Board Assembly, Basic Chain Accessory      |
| 619274   | 1    | Bolt Bag Package, Basic Chain              |
| 619289   | 1    | Wall Board Frame                           |
| 619217   | 1    | Basic Chain Layout Details (Install Sheet) |

## Basic Chain & Clamping Package

619208 Weight: 177 lbs. (80.25 kg) – wall mounted

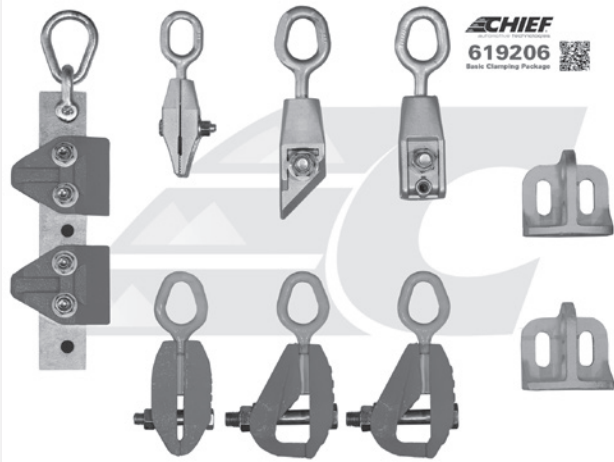


| Part No. | Qty. | Description                                             |
|----------|------|---------------------------------------------------------|
| 628220   | 2    | Turnbuckle Assist                                       |
| 605261   | 2    | Bumper Puller, w/18" Chain                              |
| 610870   | 1    | Pulling Plate, Right                                    |
| 610888   | 1    | Pulling Plate, Left                                     |
| 619057   | 2    | Slotted Chain Hook                                      |
| 602749   | 2    | 'T' Hook, w/18" Chain                                   |
| 602757   | 2    | 'R' Type Hook, w/18" Chain                              |
| 611899   | 2    | All-Angle Clamp                                         |
| 619248   | 1    | Board Assembly, Basic Chain and Clamping                |
| 619273   | 1    | Bolt Bag Package, Basic Chain and Clamping              |
| 619289   | 1    | Wall Board Frame                                        |
| 619216   | 1    | Basic Chain and Clamping Layout Details (Install Sheet) |

# TOOL BOARD PACKAGES

## Basic Clamping Package

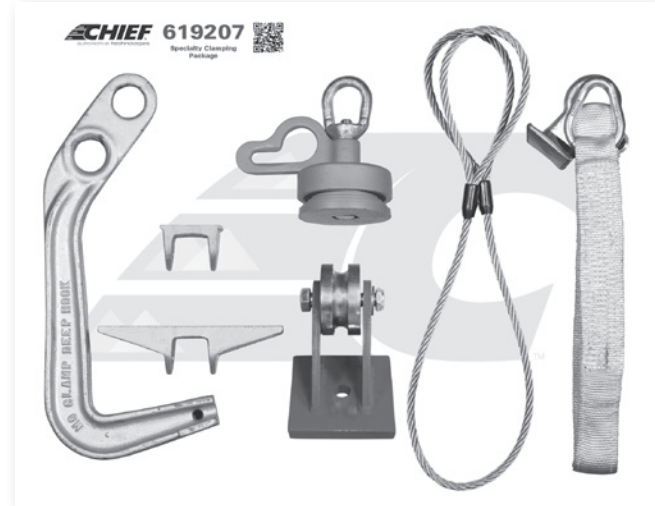
619206 Weight: 45 lbs. (20.25 kg) – wall mounted



| Part No. | Qty. | Description                                   |
|----------|------|-----------------------------------------------|
| 611880   | 1    | Unitized Body Clamp                           |
| 624235   | 2    | Chief Attachment Side-Pull                    |
| 672034   | 2    | 2" Self-Tightening Clamp                      |
| 672000   | 1    | 1-1/2" Self-Tightening Clamp                  |
| CL1290CA | 1    | Chief Bite-Tight C-Clamp                      |
| CL0690CA | 1    | Chief Mini Bite-Tight Clamp                   |
| CL1590CA | 1    | Chief Angle Bite-Tight Clamp                  |
| 619013   | 1    | Users Manual, Self-Tightening Clamp           |
| 619242   | 1    | Board Assembly, Basic Clamping                |
| 619271   | 1    | Bolt Bag Package, Basic Clamping              |
| 619289   | 1    | Wall Board Frame                              |
| 619214   | 1    | Basic Clamping Layout Details (Install Sheet) |

## Specialty Clamping Package

619207 Weight: 45 lbs. (20.25 kg) – wall mounted



| Part No. | Qty. | Description                                       |
|----------|------|---------------------------------------------------|
| 697730   | 1    | Down-Pull Attachment                              |
| MC6400   | 1    | Regular Deep Hook Set, Mo-Clamp                   |
| 619111   | 1    | Boltless Strut Tower Puller                       |
| 602896   | 1    | Nylon Fender Strap                                |
| 602909   | 1    | Cable Sling                                       |
| 619245   | 1    | Board Assembly, Specialty Clamping                |
| 619272   | 1    | Bolt Bag Package, Specialty Clamping              |
| 619289   | 1    | Wall Board Frame                                  |
| 619215   | 1    | Specialty Clamping Layout Details (Install Sheet) |

## Small Pulling Package

619201 Weight: 50 lbs. (22.5 kg) – wall mounted

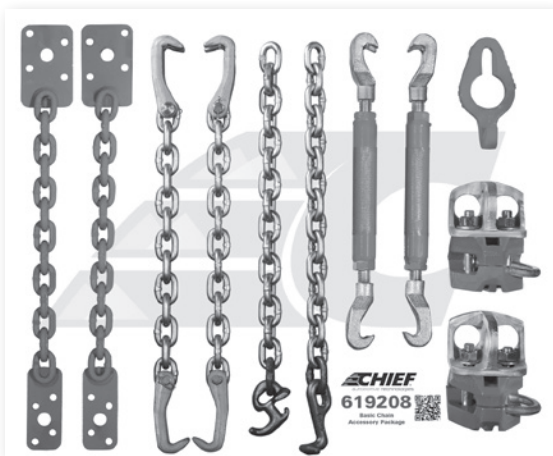
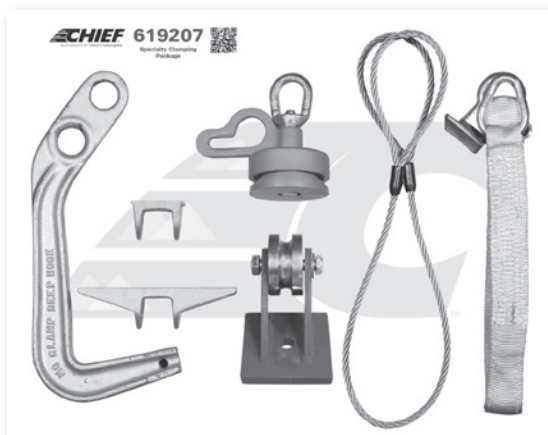
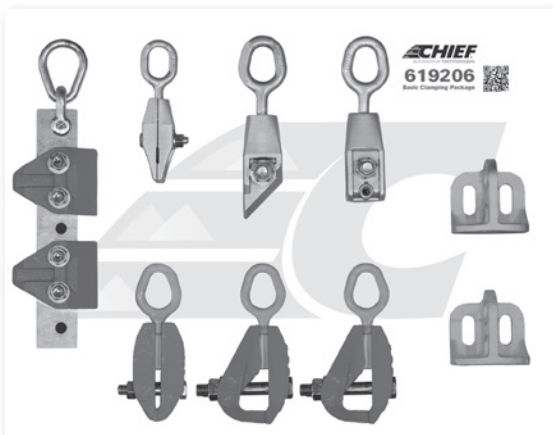


| Part No. | Qty. | Description                                  |
|----------|------|----------------------------------------------|
| 602861   | 1    | Tie-Down Chain, 3/8" x 8" w/Hook             |
| 602853   | 1    | Tie-Down Chain, 3/8" x 4" w/Hook             |
| 606548   | 2    | Slotted Chain Anchor, 3/8" Thick             |
| 611899   | 1    | All-Angle Clamp                              |
| CL0690   | 1    | Chief Mini Bite-Tight Clamp                  |
| CL1590CA | 1    | Chief Angle Bite-Tight Clamp                 |
| 672000   | 1    | 1-1/2" Self-Tightening Clamp                 |
| 672034   | 1    | 2" Self-Tightening Clamp                     |
| 619013   | 1    | Users Manual, Self-Tightening Clamp          |
| 619233   | 1    | Board Assembly, Small Pulling                |
| 619268   | 1    | Bolt Bag Package, Small Pulling              |
| 619289   | 1    | Wall Board Frame                             |
| 619211   | 1    | Small Pulling Layout Details (Install Sheet) |

# TOOL BOARD PACKAGES

## Deluxe Chain & Clamping Accessory Package

619204 – Wall Mount Weight: 330 lbs. (150 kg) / 619205 – Cart Mount Weight: 400 lbs. (182 kg)



| Part No. | Qty. | Description                     |
|----------|------|---------------------------------|
| 697730   | 1    | Unitized Body Clamp             |
| 624235   | 2    | Chief Attachment Side-Pull      |
| 672034   | 2    | 2" Self-Tightening Clamp        |
| 672000   | 1    | 1-1/2" Self-Tightening Clamp    |
| CL1290CA | 1    | Chief Bite-Tight C-Clamp        |
| CL0690CA | 1    | Chief Mini Bite-Tight Clamp     |
| CL1590CA | 1    | Chief Angle Bite-Tight Clamp    |
| 697730   | 1    | Down-Pull Attachment            |
| MC6400   | 1    | Regular Deep Hook Set, Mo-Clamp |
| 619111   | 1    | Boltless Strut Tower Puller     |
| 602896   | 1    | Nylon Fender Strap              |
| 602909   | 1    | Cable Sling                     |
| 628220   | 2    | Turnbuckle Assist               |
| 605261   | 2    | Bumper Puller, w/18" Chain      |
| 610870   | 1    | Pulling Plate, Right            |
| 610888   | 1    | Pulling Plate, Left             |
| 619057   | 2    | Slotted Chain Hook              |
| 602749   | 2    | 'T' Hook, w/18" Chain           |
| 602757   | 2    | 'R' Type Hook, w/18" Chain      |

| Part No. | Qty. | Description                                |
|----------|------|--------------------------------------------|
| 611899   | 2    | All-Angle Clamp                            |
| 602853   | 2    | Chain, Tie-Down, 3/8" x 4' w/Hook          |
| 602861   | 2    | Chain, Tie-Down, 3/8" x 8' w/Hook          |
| 606548   | 2    | Slotted Chain Anchor                       |
| 610984   | 2    | Chain Connector                            |
| 619289   | 4    | Wall Board Frame                           |
| 619013   | 1    | Users Manual, Self-Tightening Clamp        |
| 619242   | 1    | Board Assembly, Basic Clamping             |
| 619271   | 1    | Bolt Bag Package, Basic Clamping           |
| 619214   | 1    | Basic Clamping Layout Details              |
| 619245   | 1    | Board Assembly, Specialty Clamping         |
| 619272   | 1    | Bolt Bag Package, Specialty Clamping       |
| 619215   | 1    | Specialty Clamping Layout Details          |
| 619248   | 1    | Board Assembly, Basic Chain and Clamping   |
| 619273   | 1    | Bolt Bag Package, Basic Chain and Clamping |
| 619216   | 1    | Basic Chain and Clamping Layout Details    |
| 619251   | 1    | Board Assembly, Basic Chain                |
| 619131   | 1    | Bolt Bag Package, Basic Chain              |
| 619217   | 1    | Basic Chain Layout Details                 |

# TOOL BOARD PACKAGES

## Deluxe Tool Board Set

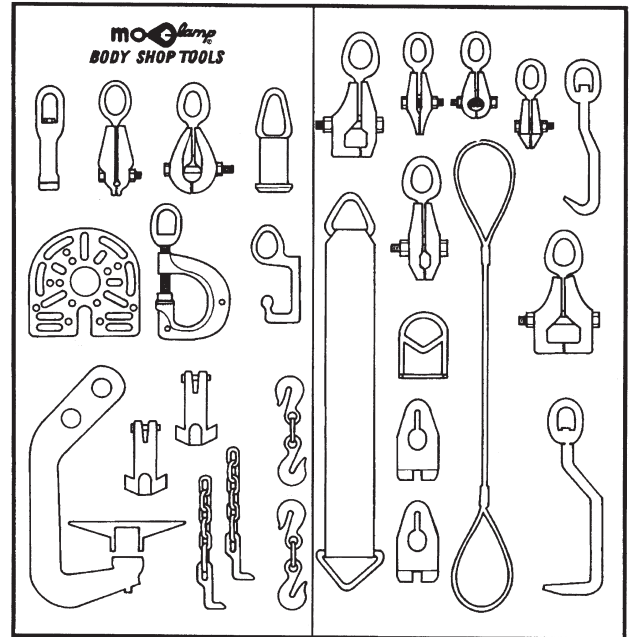
MC5013 Weight: 157 lbs. (71 kg)



| Qty. | Description                       |
|------|-----------------------------------|
| 1    | Angle Bite                        |
| 1    | JR Clamp                          |
| 1    | W Clamp                           |
| 1    | Tac-N-Pull                        |
| 1    | Handy Link                        |
| 1    | Slim Line Sill Hook               |
| 1    | Numerous Angle Pull               |
| 1    | Track Hook                        |
| 1    | Multi-Adapter Plate               |
| 1    | Small Flat-Nose Sheet Metal Hook  |
| 1    | Large Round-Nose Sheet Metal Hook |
| 1    | 7/16" Screw Pin Shackle           |
| 1    | Multi-Angle Clamp                 |
| 1    | Door Post Puller                  |
| 1    | Cable Sling                       |
| 1    | Dyna-Mo C Clamp                   |
| 1    | Dyna-Mo Corner Clamp              |
| 1    | Flash Clamp                       |
| 1    | Handy Hook                        |
| 1    | Panel Puller                      |
| 1    | JR Versa Hook                     |
| 1    | Chain Locking Fork                |
| 1    | Inline Slider                     |
| 1    | 1/2" Screw Pin Shackle            |
| 1    | Double Grab Hook                  |
| 1    | G Clamp                           |
| 1    | 3/8" x 6' Chain                   |
| 1    | 3/8" x 8' Chain                   |
| 1    | Hook - 3/8" Chain                 |
| 1    | Regular Deep Hook                 |
| 1    | Nylon Sling                       |

## No. 10 Tool Board with Tools

MC5078 Weight: 157 lbs. (71 kg)

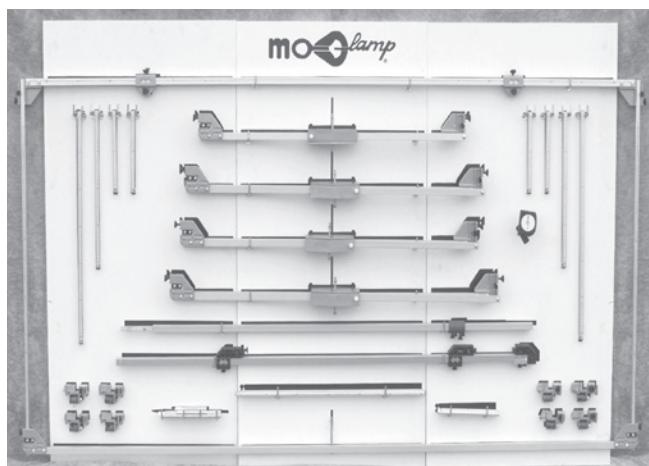


| Qty. | Description              |
|------|--------------------------|
| 1    | C Clamp                  |
| 1    | JR Clamp                 |
| 1    | T.O. Clamp               |
| 1    | Long Nose Clamp          |
| 1    | Baby Box Clamp           |
| 1    | Panel Puller             |
| 2    | Track Hook               |
| 1    | Sill Hook                |
| 2    | Double Grab Hook         |
| 1    | Sm Flat Nose SMH         |
| 1    | Lg Flat Nose SMH         |
| 2    | Hole Plug                |
| 1    | Door Post Puller/Twister |
| 2    | "T" Hook Tie-Downs       |
| 1    | G Clamp                  |
| 1    | Cable Sling              |
| 1    | Dyna-Mo Clamp            |
| 1    | Dyna-Mo JR               |
| 1    | Dyna-Mo W                |
| 1    | Big Mouth Clamp          |
| 1    | Adapter Plate            |
| 1    | Slide-Through Sling      |
| 1    | Deep Hook Set            |
| 1    | Tool Board with Hooks    |



# MISCELLANEOUS

## Mo-Pro Gauge Package MC7400



Includes:

- Universal Tram Gauge
- Deluxe Centerline Gauge
- Strut Tower
- Alignment Gauge
- Display Board and Hooks

Weight: 96 lbs. (43.54 kg)

## Universal Tram Gauge with Storage Case MC7000



Includes hard plastic storage case.  
Measures from 2-1/2" (65mm) to 11' (3.3m)  
Weight: 11 lbs. (4.99 kg)

## Baby Tram™ Gauge MC7051

Measures from 2-1/2" (65mm) to 7' (2.1m)  
Weight: 7 lbs. (3.18 kg)

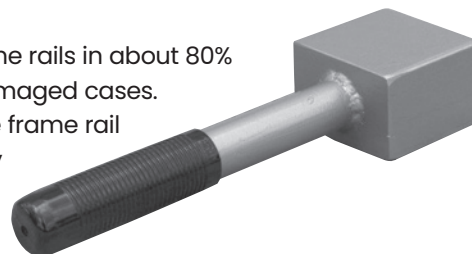


## Baby Tram™ Gauge with Case MC7050

Includes hard plastic storage case.  
Measures from 2-1/2" (65mm) to 7' (2.1m)  
Weight: 11 lbs. (4.99 kg)

## Mo-Block Dolly™ for Frame Rails MC5710

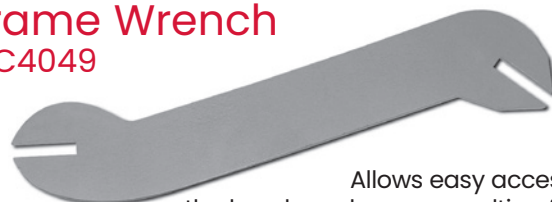
Straightens frame rails in about 80% of front-end damaged cases. Inserted into the frame rail pocket, the dolly straightens high strength low-alloy metals easily and quickly. Dolly design keeps hands and fingers safely away from the impact area.



### SPECIFICATIONS:

|                 |                  |
|-----------------|------------------|
| Overall Length: | 11" (280 mm)     |
| Weight:         | 6 lbs. (2.72 kg) |

## Frame Wrench MC4049



Allows easy access to the bends and waves resulting from frame straightening. Helps achieve the "pre-accident" look, and eliminates unsightly hammer marks on the frame. Designed for C-Clamp construction. Two different angles to access the difficult underside of vehicles.

### SPECIFICATIONS:

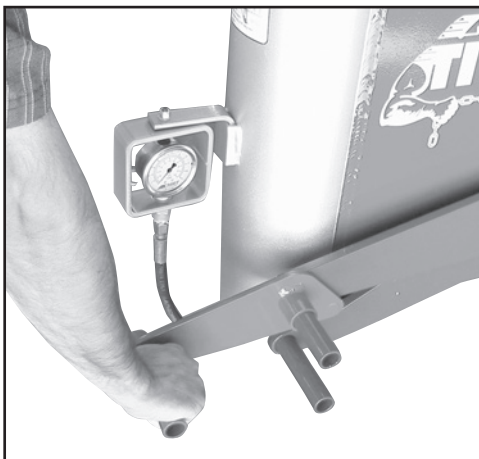
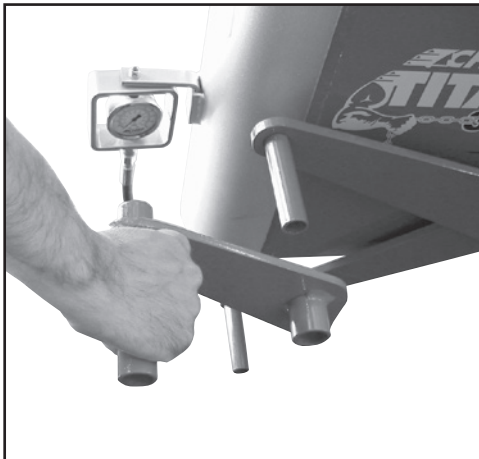
|                 |                   |
|-----------------|-------------------|
| Capacity:       | 5 tons (4,536 kg) |
| Overall Length: | 15" (381 mm)      |
| Weight:         | 4 lbs. (1.81 kg)  |

## MISCELLANEOUS

### Sure-Lock® Handle Extension 450510

Lock and unlock your Sure-Lock towers with ease using Chief's Sure-Lock Handle Extension. Acting similar to a "cheater bar" the Handle Extension fits easily over your patented Sure-Lock tower handles, allowing you to lock or unlock the tower clamping mechanism with little effort.

Weight: 3 lbs. (1.36 kg)



### Wheel Chock Assembly

648880 - Single

648882 - Set of Two



The Wheel Chock Assembly is a fast and secure method of blocking a vehicle's wheels before lifting the frame machine. Works on all Chief frame pulling systems.

Weight: 30 lbs. (13.50 kg) Set of Two

---

### Crossmembers

450530 -E/VHT Wide-Trak and Goliath

Weight: 59 lbs. (26.55 kg)

450003 -E/VHT Standard and Impulse Tilt

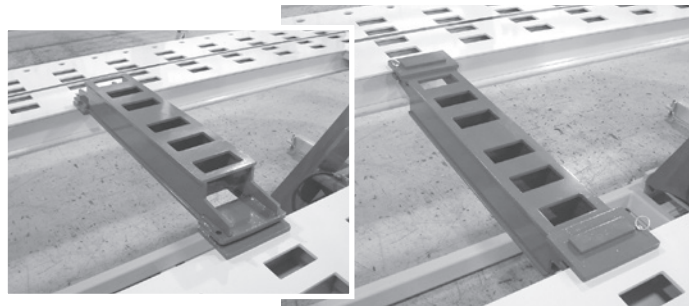
Weight: 65 lbs. (29.25 kg)

610773 -S21M

Weight: 60 lbs. (27 kg)

687099 -Titan-360

Weight: 58 lbs. (26.1 kg)



Increase the set-up versatility of your Chief rack with these rugged and durable crossmembers. Fully movable with locking capabilities, each crossmember is custom designed for your specific Chief pulling system. Quality engineered to provide a wide range of pulling and holding options, including the option of flipping the crossmember over if greater height is required.

## MISCELLANEOUS

### Dead Vehicle Dolly (single) 610706

Engineered for safety and ease when used to position a disabled vehicle on a pulling rack. Most versatile when used with the Chief Electric Winch.

Weight: 23 lbs.  
(10.35 kg)



### Electric Winch 610538



Heavy-duty electric winch is durable and lightweight for long life and easy handling. Provides the power necessary to position disabled vehicles on pulling racks.

Weight: 39 lbs. (17.55 kg)

### Vehicle Loading Package 691032



Load and position undriveable or hard-to-maneuver vehicles directly onto platform by positioning. Dead Vehicle Dollies under wheels and pulling with the Electric Winch.

Weight: 85 lbs. (38.25 kg)

### Chief Air Jack 091900

Fast, easy to use and, above all, safe. Operation is easy – simply press the green arrow to raise, and the red arrow to lower. The Chief Air Jack's valves are designed to allow it to maintain its position when the air supply is disconnected. This means a single air line can be used for



#### SPECIFICATIONS:

|                       |                    |
|-----------------------|--------------------|
| Relaxed Height:       | 5-3/4" (146mm)     |
| Full Extended height: | 13-3/4" (349mm)    |
| Weight:               | 39 lbs. (17.55 kg) |

### Saddle-Mate 605830



The Saddle-Mate is a great addition to the Chief Air Jack. It fits into the top of the Chief Air Jack and helps displace the lifting load over more of the sill or pinch weld.

Weight: 3 lbs. (1.36 kg)

### Box of Blocks 604740



Includes 10 each of the following sizes:

- 4" x 4" x 9" (100mm x 100mm x 230mm)
- 2" x 4" x 9" (50mm x 100mm x 230mm)
- 1" x 4" x 9" (25mm x 100mm x 230mm)

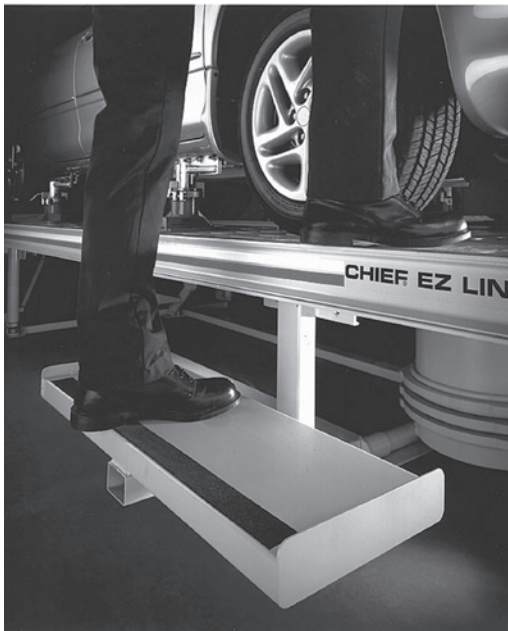
Weight: 58 lbs. (26.1 kg)



## MISCELLANEOUS

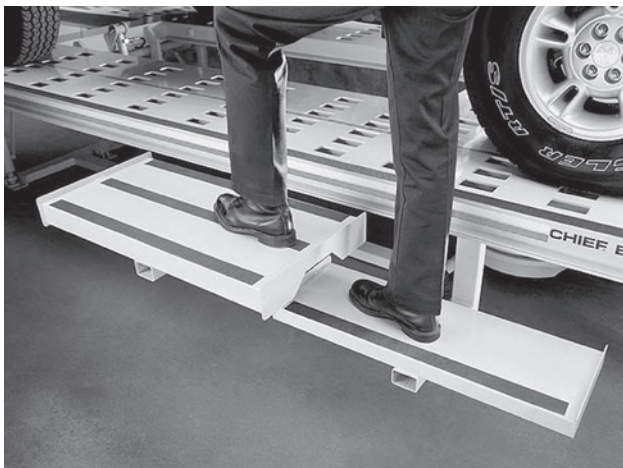
### Portable Step

649030



### Work Platform

649040



Work Platform shown  
with Portable Step

Add the Portable Step to your Chief rack and give technicians an easy step onto the mainframe. The step can also be used to more easily view and repair vehicles. Both the Portable Step and Work Platform are simple to install and remove.

Portable Step Weight: 35 lbs. (15.75 kg)

Work Platform Weight: 50 lbs. (22.50 kg)

### Universal Wheel Stand

674507 – Set of Two



When it's necessary to remove a vehicle's wheel, Chief's Universal Wheel Stands are a safe and practical method for supporting the vehicle...either on the floor or on a Chief rack. The stands are particularly useful when supporting vehicles with strut suspension when using a measuring system. The stands feature a wider range of adjustment, and optional extension legs allow usage on high ground-clearance vehicles.

Weight: 33 lbs. (14.85 kg) Set of two



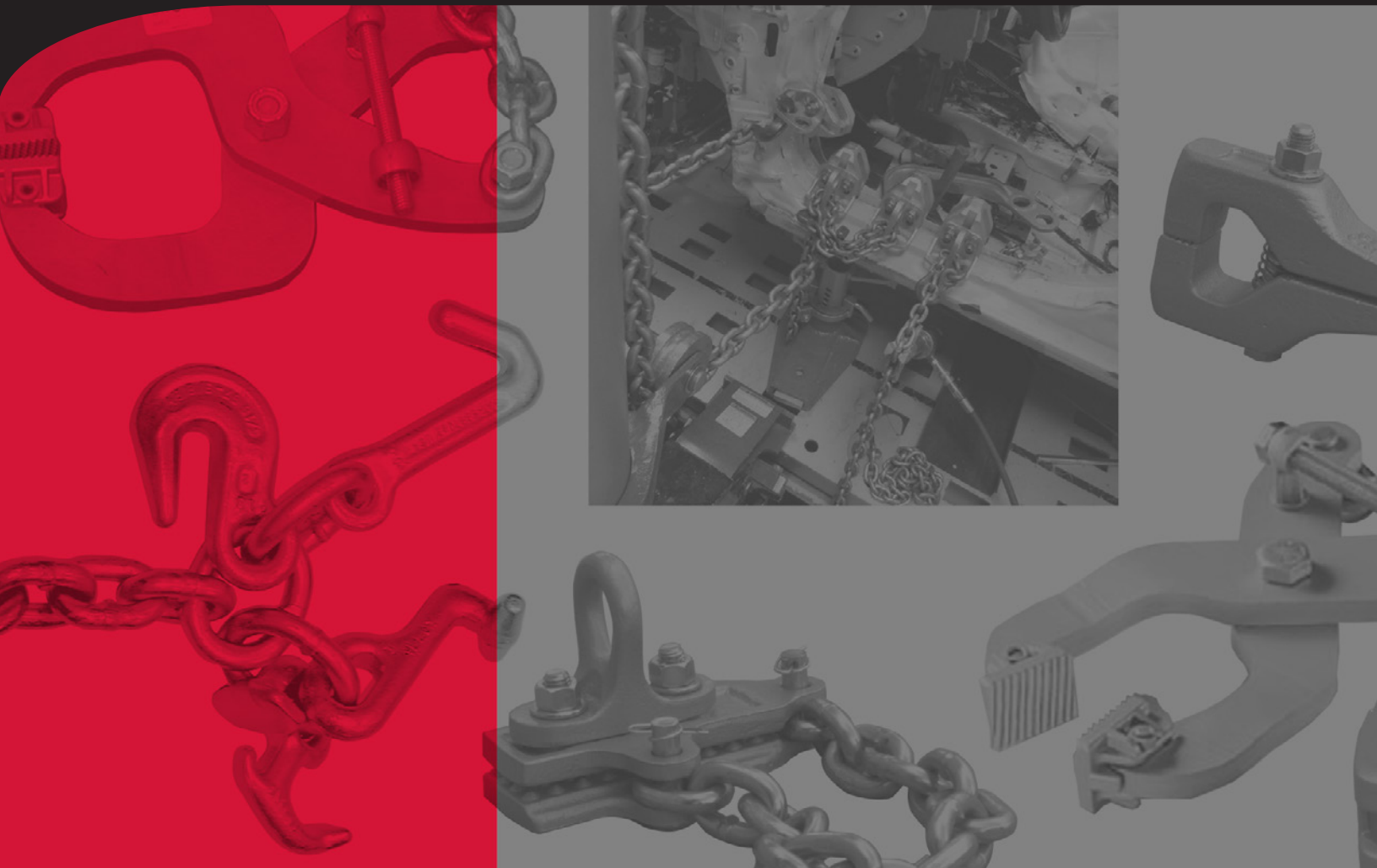


## **LIMITED ONE-YEAR WARRANTY & LIABILITY**

Unless otherwise indicated, Chief Collision Technology warrants for one year from date of installation and/or purchase any of its products which do not perform satisfactorily due to defect caused by faulty material or workmanship. Chief's obligation under this warranty is limited to the repair or replacement of products which are defective and which have not been misused, carelessly handled or defaced by repair or repairs made or attempted by others.

*CHIEF COLLISION TECHNOLOGY DOES NOT ASSUME RESPONSIBILITY FOR ANY DEATH, INJURY OR PROPERTY DAMAGE RESULTING FROM THE OPERATOR'S NEGLIGENCE OR MISUSE OF THIS PRODUCT OR ITS ATTACHMENTS. CHIEF MAKES NO WRITTEN, EXPRESS OR IMPLIED WARRANTY WHATSOEVER OF MERCHANTABILITY OR FITNESS FOR A PARTICULAR PURPOSE OTHER THAN THE LIMITED ONE-YEAR WARRANTY STATED ABOVE.*

Merchandise eligible for return requires a "RETURNED GOODS AUTHORIZATION" number on the package. Authorization numbers can be obtained by calling or writing the Customer Service Department, Chief Collision Technology. No returned merchandise will be accepted without an authorization number. All returned merchandise must be shipped freight prepaid and may be subject to a handling and restocking charge.



PART OF **VSG** a **DOVER** company

**ROTARY SOLUTIONS**

To learn more about all of our automotive service and repair solutions or to contact your local distributor, visit us at [www.RotarySolutions.com](http://www.RotarySolutions.com) today.

**Need assistance or have questions? We're here to help:**

800.445.5438 / Sales: [insidesales@rotarysolutions.com](mailto:insidesales@rotarysolutions.com)

Technical Support: [chiefsupport@rotarysolutions.com](mailto:chiefsupport@rotarysolutions.com)

**ROTARY SOLUTIONS™**

2700 Lanier Drive | Madison, IN 47250, U.S.A.

Lit# **CHIEF Tools/Accessories Catalog.05.01.2025**

©2025 VEHICLE SERVICE GROUP™

All Rights Reserved. Unless otherwise indicated, ROTARY SOLUTIONS™, VEHICLE SERVICE GROUP™, DOVER® and all other trademarks are property of Dover Corporation and its affiliates.

Product specifications, part numbers, images and component descriptions are subject to change without notice or liability.