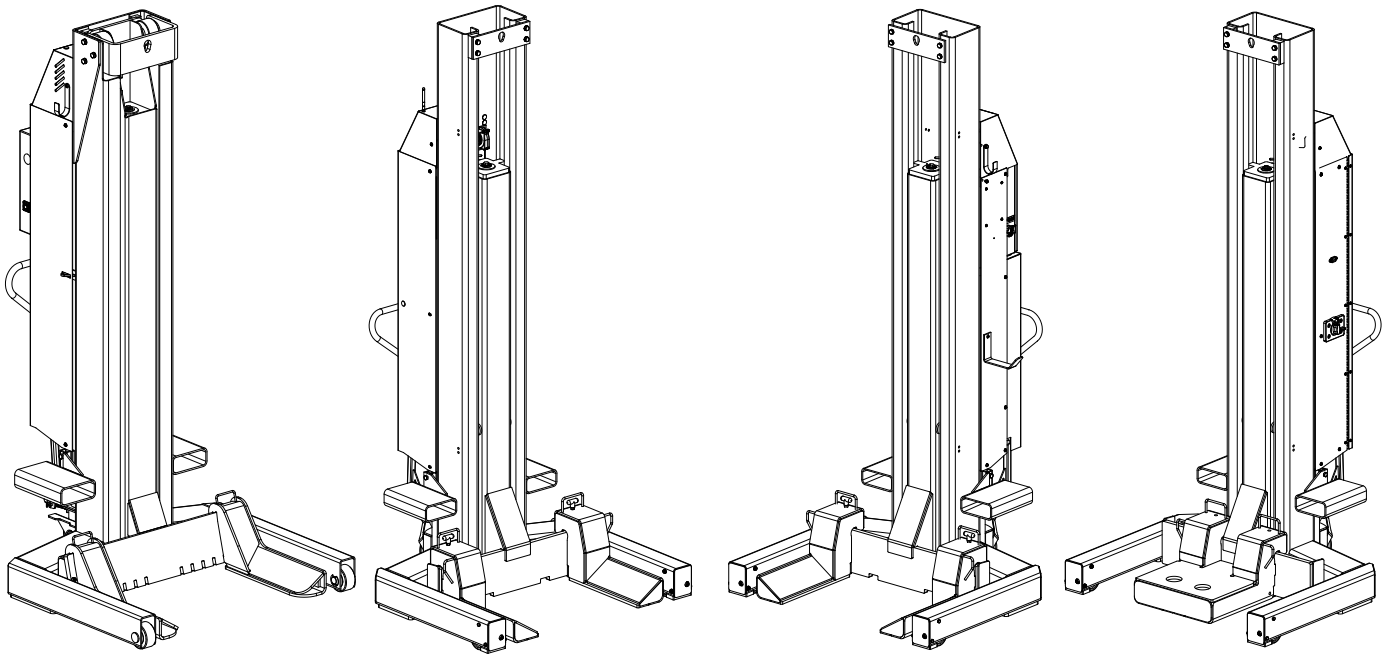




# Parts Breakdown All Mobile Column Lift Series



**IMPORTANT:** When ordering parts or requesting service always give exact model and power unit serial number. Model number is shown on nameplate attached to side of column. Power unit serial number is located on front of power unit.

**OWNERS RECORD**  
Complete information  
at right and keep in  
a safe place.

Date Installed \_\_\_\_\_

Installed in Bay # \_\_\_\_\_

Power Unit Serial # \_\_\_\_\_

Power Unit Model # \_\_\_\_\_

Lift Serial # \_\_\_\_\_

Lift Model # \_\_\_\_\_

**NOTE: For replacement parts -See your nearest Parts Distributor.**

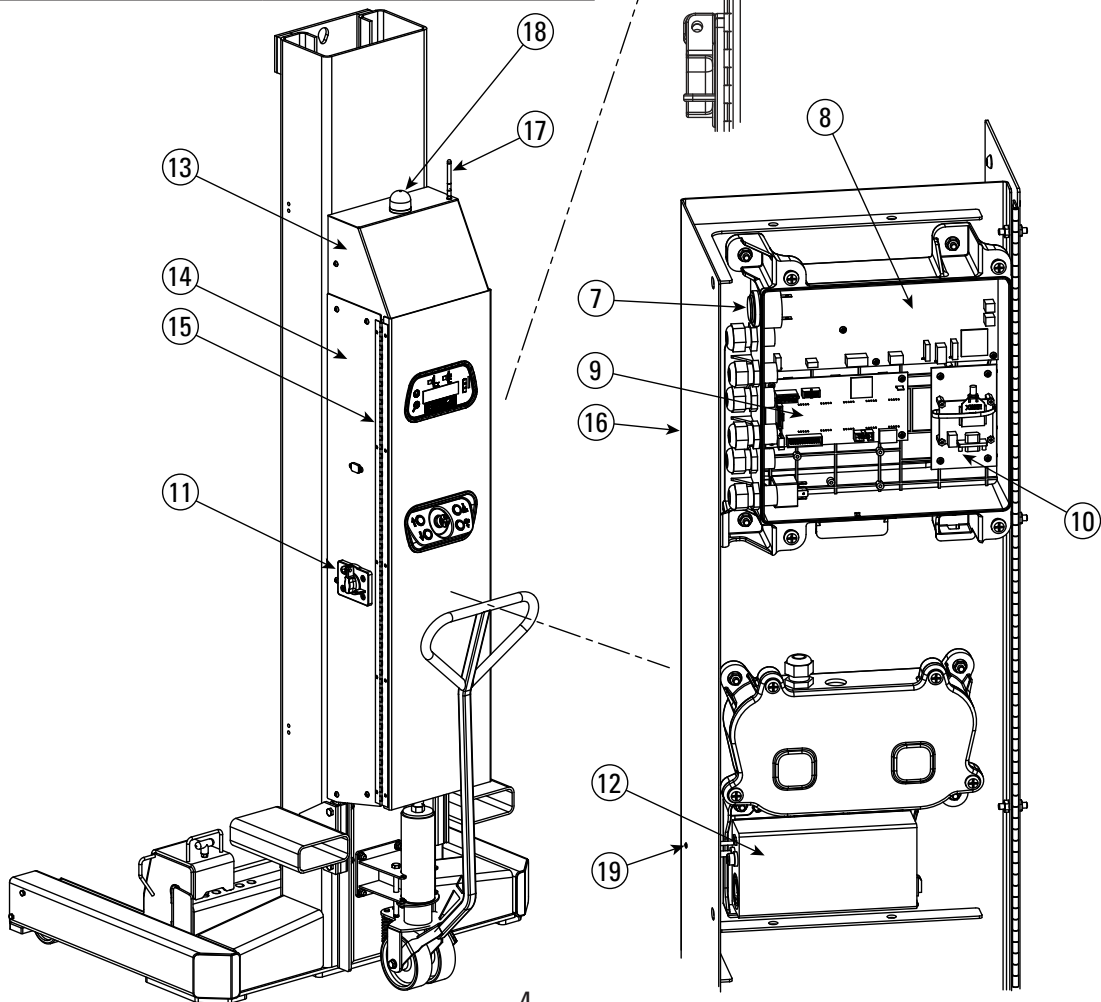
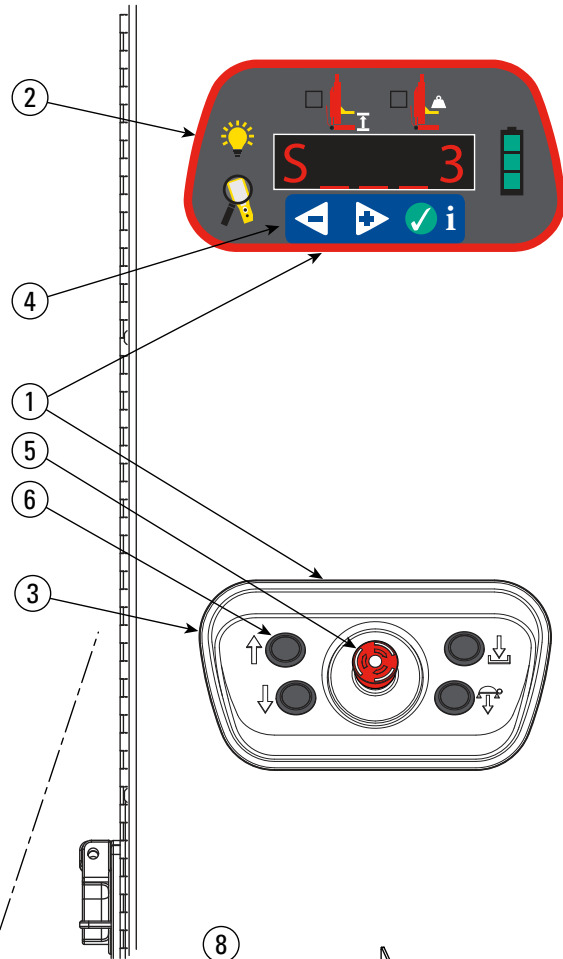
Notes:

## TABLE OF CONTENTS:

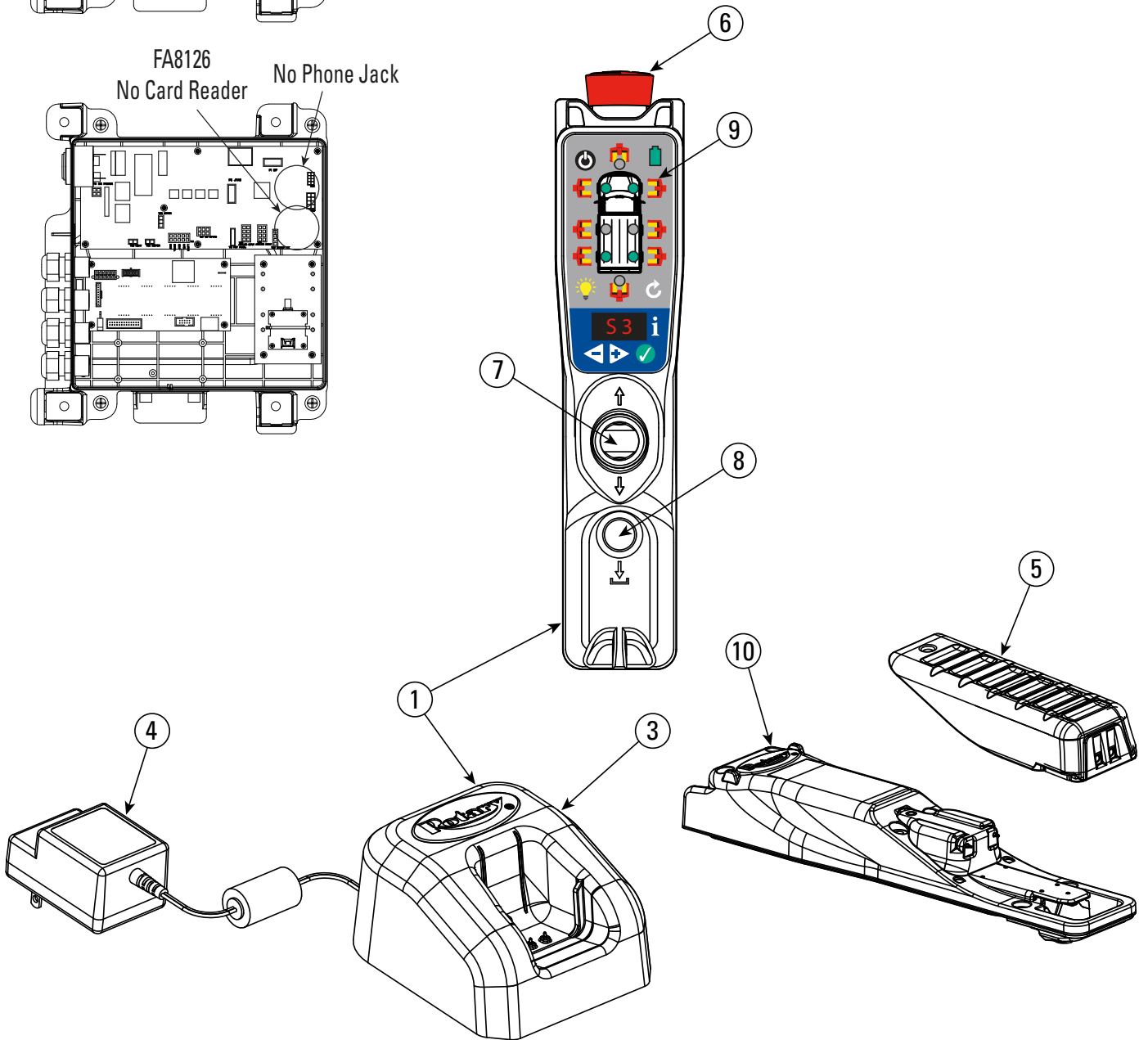
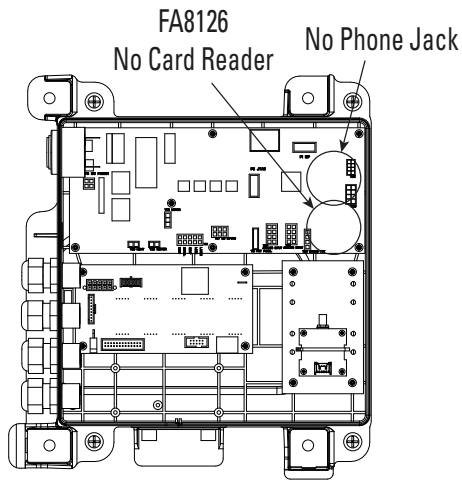
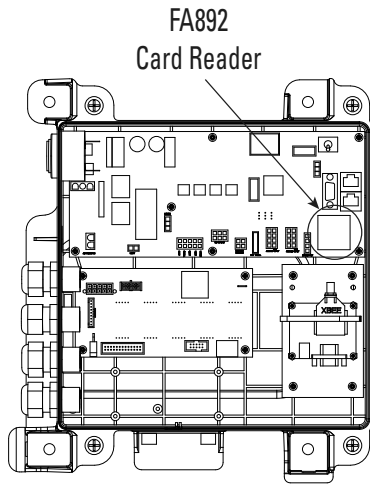
|                                       |    |
|---------------------------------------|----|
| DC .....                              | 4  |
| CONTROLS .....                        | 4  |
| FLEX/FLEX MAX CONTROLS .....          | 4  |
| FLEX COLUMN MOUNTED CONTROL.....      | 4  |
| FLEX REMOTE .....                     | 5  |
| FLEX WIRING DIAGRAM .....             | 6  |
| CLASSIC MACH.....                     | 8  |
| MACH 18 CONTROLS .....                | 8  |
| MACH 13 CONTROLS .....                | 10 |
| CLASSIC WIRING DIAGRAM .....          | 11 |
| DC INSIDE CABINET .....               | 12 |
| DC POWER UNIT .....                   | 15 |
| <br>                                  |    |
| AC .....                              | 16 |
| CONTROLS .....                        | 16 |
| WIRING DIAGRAMS.....                  | 19 |
| AC POWER UNIT AND INSIDE CABINET..... | 21 |
| STRUCTURAL.....                       | 22 |
| 18-20K STRUCTURAL.....                | 22 |
| 13-14K STRUCTURAL.....                | 24 |
| CASTER ASSEMBLY .....                 | 27 |
| DECALS.....                           | 28 |

|      |                              | Pre-Feb 2019     | Post-Feb 2019 |
|------|------------------------------|------------------|---------------|
| Item | Description                  | Part No.         |               |
| 1    | Controls assembly            | FA892            | FA8126        |
| 2    | Display and Controls Assy    | FA868            | FA8125        |
| 3    | Lift Operation Controls Assy | FA874            |               |
| 4    | Membrane Touchpad            | FA8107           |               |
| 5    | E-Stop Actuator              | FA885            |               |
| 6    | Push Buttons                 | FA877            |               |
| 7    | Audible Single Device        | FA7974           |               |
| 8    | Control Board                | M140140          | FA9220        |
| 9    | UI Board                     | FA872            |               |
| 10   | Modem Assembly               | M110258-KIT      | FA8145-KIT    |
| 11   | DC Disconnect Switch         | FA884            |               |
| 12   | 24V Charger                  | FA966-63BK       |               |
| 13   | Upper Cover Weldment         | M120500BK        |               |
| 14   | Side Panel Weldment          | M120502BK        |               |
| 15   | Door Hinge                   | M120504          |               |
| 16   | Door Weldment                | M140139BK        |               |
| 17   | RF Antenna                   | M130074/MC130271 |               |
| 18   | Beacon Light                 | M130194          |               |
| 19   | Charger Window               | FA966-60         |               |
| 20   | FLEX MAX KIT                 | W/O MEMBRANE     | FA8136        |
|      |                              | WITH MEMBRANE    | FA8137        |

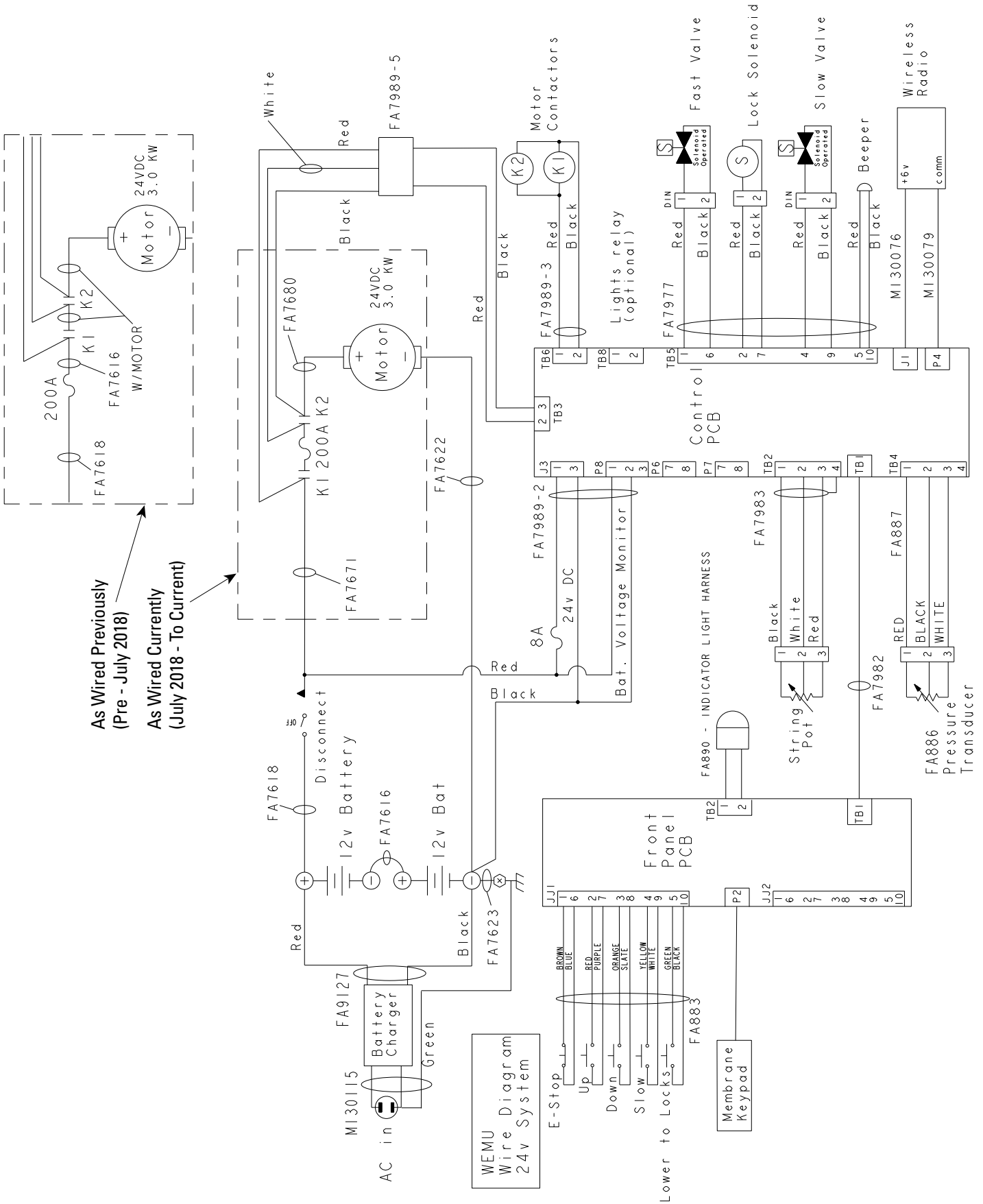
# Flex



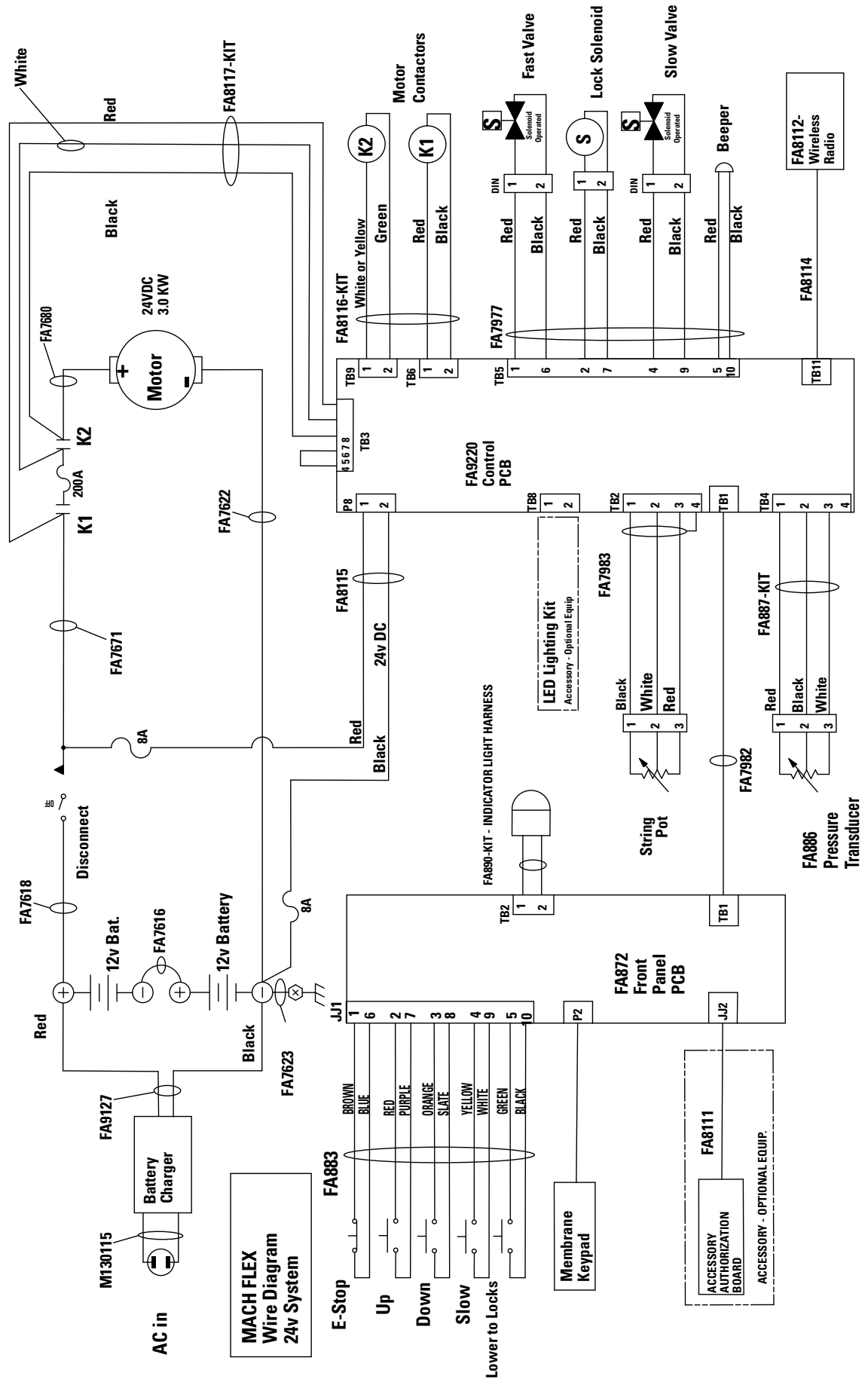
| Item | Description                              | Part No.      |
|------|--|---------------|
| 1    | Remote Controller and Charging Dock Assy | FA845-MCH-KIT |
| 2    | NA                                       | NA            |
| 3    | Dock Assy                                | FA860         |
| 4    | Charger                                  | FA867         |
| 5    | Battery Pack                             | FA849-KIT     |
| 6    | Emergency Stop                           | FA9123-9      |
| 7    | Joystick Assy                            | FA880         |
| 8    | Lower to Lock Button                     | FA859         |
| 9    | Membrane Switch                          | FA855         |
| 10   | Remote Back                              | FA8134        |



# Flex With FA892 Control Box



# Flex New Control Box FA8126

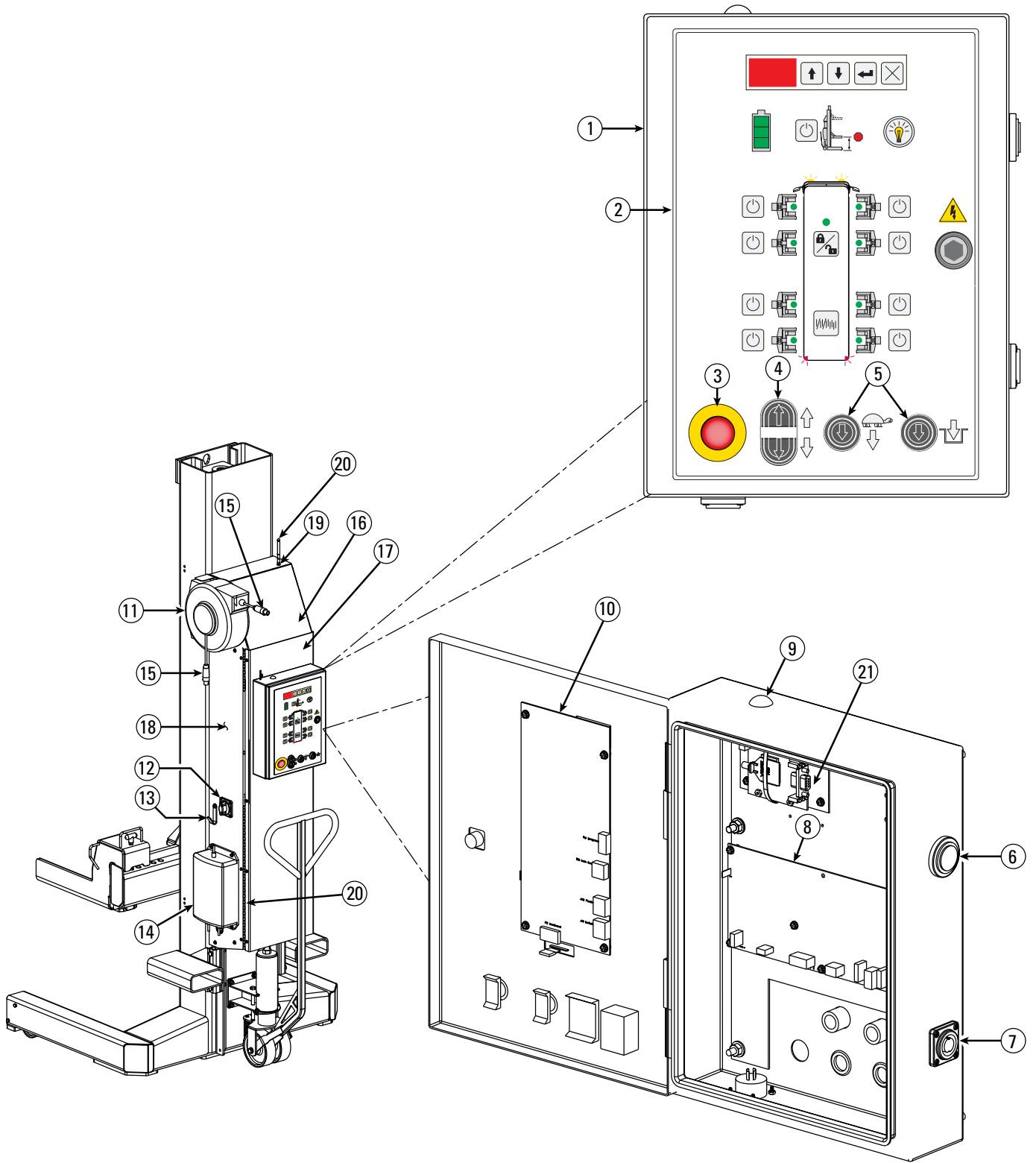


## 18K DC Classic Controls

| Item | Description                      |                        | Part No.               |            |
|------|----------------------------------|------------------------|------------------------|------------|
| 1    | Control Panel Assembly           | Wired                  | FA7958B                |            |
|      |                                  | Wireless               | FA7958WLSB             |            |
| 2    | Membrane Touchpad                |                        | FA7964                 |            |
| 3    | E-Stop Actuator                  |                        | FA7962                 |            |
| 4    | Dual Push Button & Switch Assy   |                        | FA8138                 |            |
| 5    | Single Push Button & Switch Assy |                        | FA8139                 |            |
| 6    | Audible Single Device            |                        | FA7974                 |            |
| 7    | Communications Connection Port   |                        | FA7958-17              |            |
| 8    | Control Board                    |                        | M140018                |            |
| 9    | 1/2" Hole Plug                   |                        | FA7958-9               |            |
| 10   | UI Board                         |                        | FA7963                 |            |
| 11   | Cord Reel Assembly               |                        | FA7958-21              |            |
| 12   | DC Disconnect Switch             |                        | FA7958-4               |            |
| 13   | Cord Hook                        |                        | M120189                |            |
| 14   | 24V Charger                      | External               | 110V Input             | FA7958-11  |
|      |                                  |                        | 230V Input             | FA7958-43  |
|      |                                  | Internal               | 110 or 230V Input      | FA966-63BK |
| 15   | Communication Connector          |                        | FA7958-19              |            |
| 16   | Upper Cover Weldment             | No Lockable Disconnect | M120152                |            |
|      |                                  | Lockable Disconnect    | M120500                |            |
| 17   | Door Weldment                    | No Lockable Disconnect | M140040RD              |            |
|      |                                  | Lockable Disconnect    | M120561RD              |            |
| 18   | Side Panel                       | Exterior Charger       | No Lockable Disconnect | M120157    |
|      |                                  |                        |                        | M110163    |
|      |                                  | Interior Charger       | Lockable Disconnect    | M110202    |
| 19   | Antenna Bulkhead                 |                        | M130072                |            |
| 20   | Continuous hinge                 | No Lockable Disconnect | M120159                |            |
|      |                                  | Lockable Disconnect    | M120504                |            |
| 21   | Modem assembly                   |                        | M110258-KIT            |            |

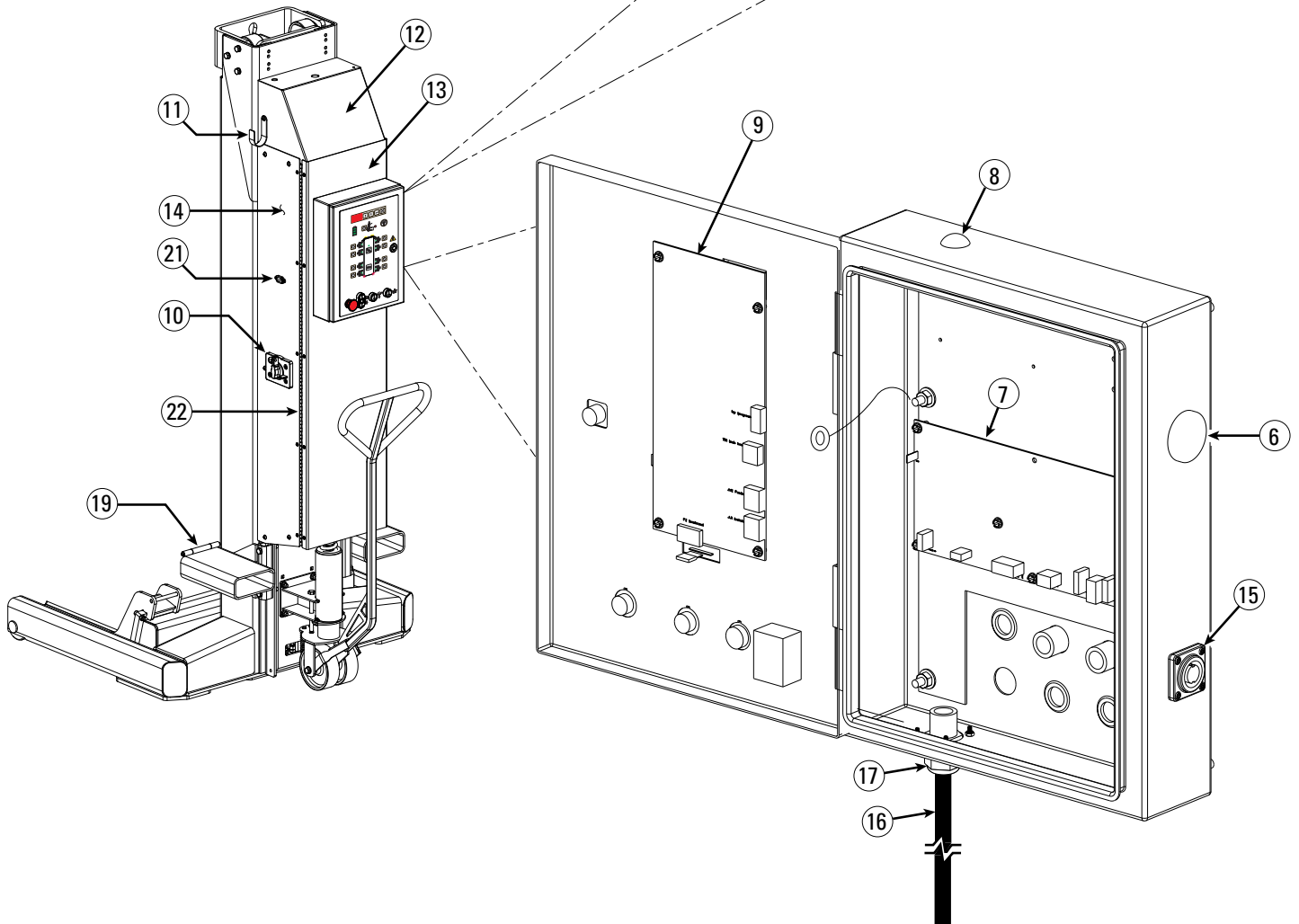
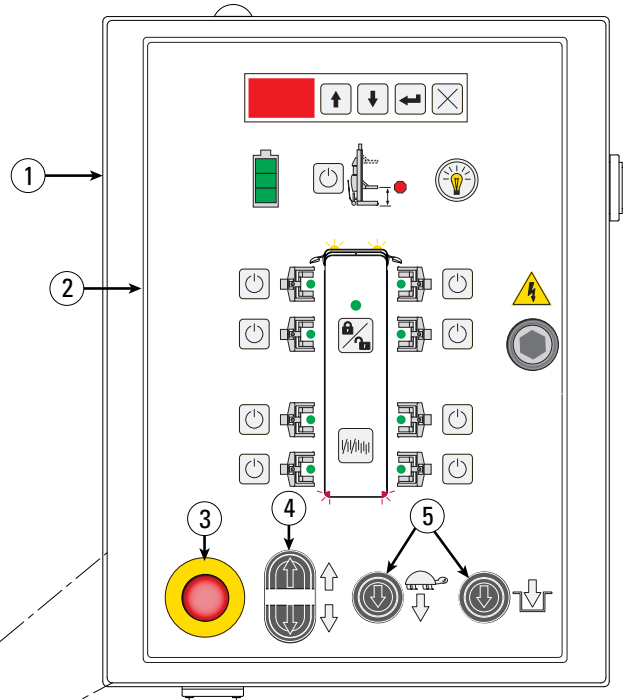


# 18K DC Classic Controls

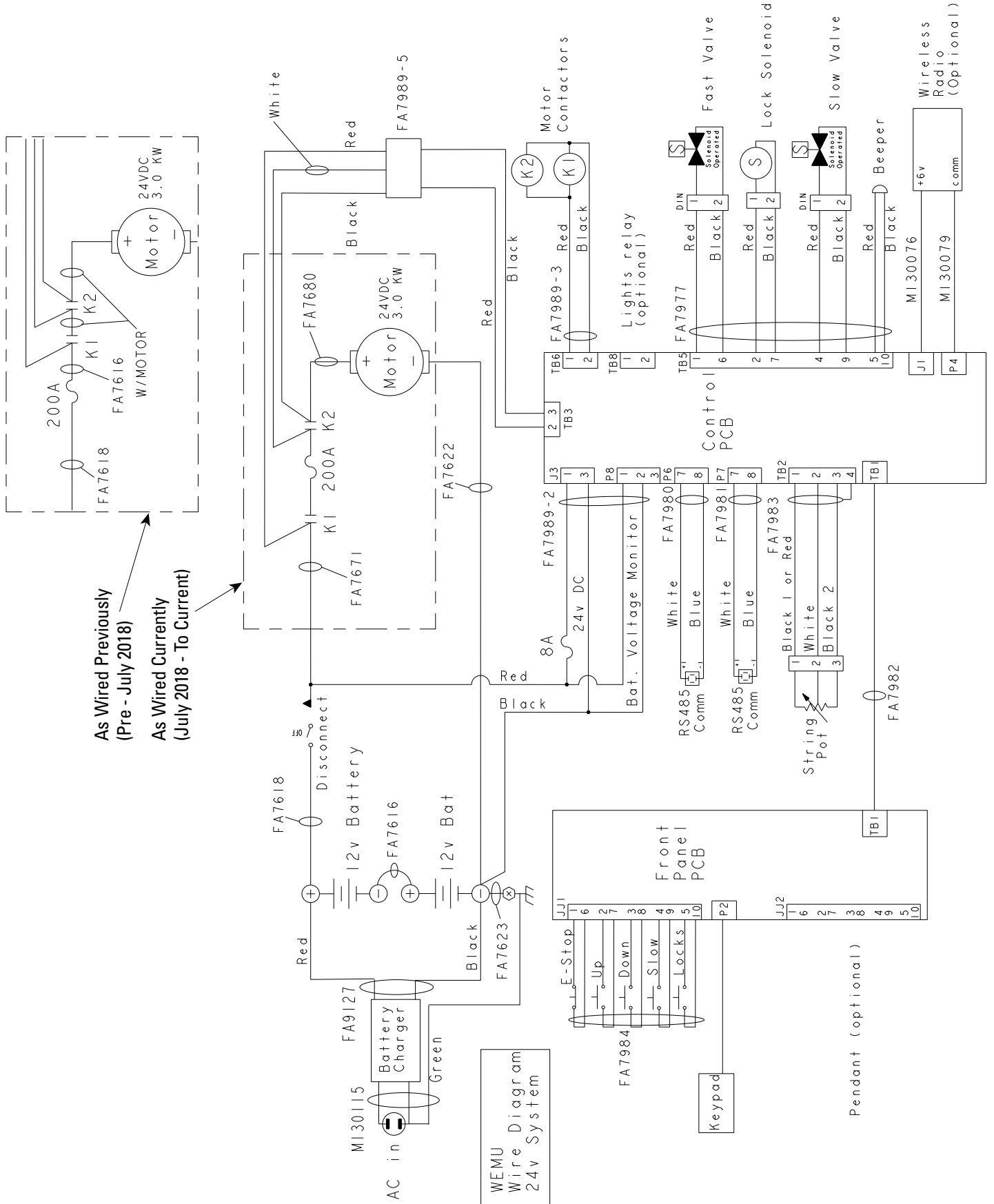


# 13K DC Classic Controls

| Item | Description                    | Part No.  |
|------|--------------------------------|-----------|
| 1    | Control Panel Assembly         | M110063   |
| 2    | Membrane Touchpad              | FA7964    |
| 3    | E-Stop Actuator                | FA7962    |
| 4    | Dual Push Button and Switch    | FA8138    |
| 5    | Single Push Button and Switch  | FA8139    |
| 6    | Plug                           | M130149   |
| 7    | Control Board                  | M140018   |
| 8    | 1/2" Hole Plug                 | FA7958-9  |
| 9    | UI Board                       | FA7963    |
| 10   | DC Disconnect Switch           | FA7958-4  |
| 11   | Cord Hanger                    | M120262   |
| 12   | Upper Cover Assembly           | M110060   |
| 13   | Cover Weldment                 | M120163   |
| 14   | Side Panel Assembly            | M110061   |
| 15   | Communications Connection Port | FA7958-17 |
| 16   | Cord                           | M130116   |
| 17   | Strain Relief                  | FA7958-28 |
| 18   | NA                             | NA        |
| 19   | Fork Lift Bracket Assembly     | M120235   |
| 20   | NA                             | NA        |
| 21   | Charger Internal Power Cord    | M130115   |
| 22   | Continuous Hinge               | M120159   |



# DC Classic Controls



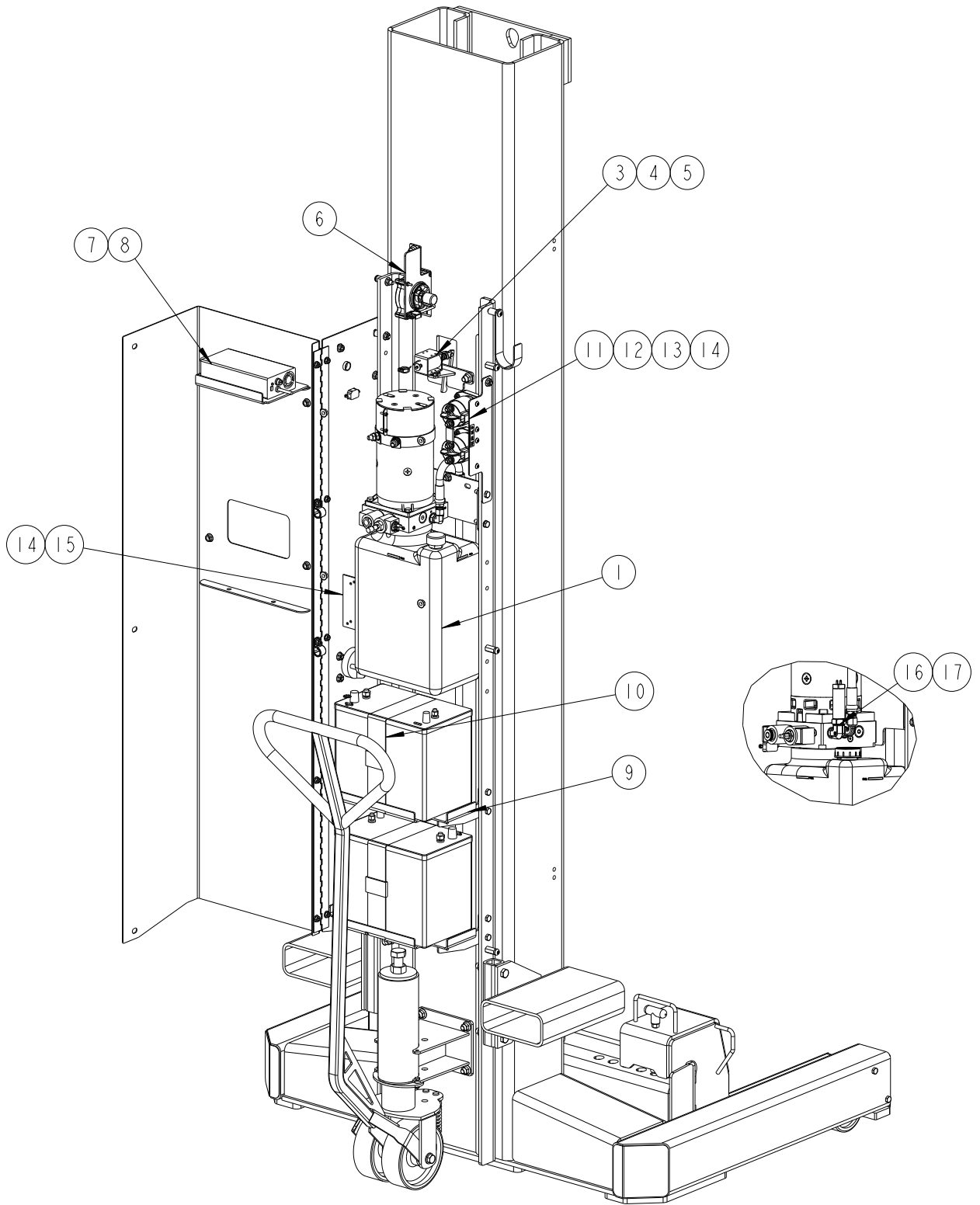
As Wired Previously  
(Pre - July 2018)

As Wired Currently  
(July 2018 - To Current)

## DC Column

| ITEM | DESCRIPTION                     | PART #              | Notes  |
|------|---------------------------------|---------------------|--|
| 1    | POWER UNIT                      | REFER TO PU SECTION |  |
| 2    | NA                              | NA                  |  |
| 3    | LOCK ASSEMBLY                   | M110008             |  |
| 4    | LOCK SOLENOID                   | M130017             |  |
| 5    | LATCH ASSEMBLY BRACKET          | M120067Y            |  |
| 6    | STRING POT ASSEMBLY             | M110187KIT          |  |
| 7    | CHARGER AND MOUNTING KIT        | FA966-63BK          |  |
| 8    | BATTERY CHARGER                 | FA966-63BK          |  |
| 9    | BATTERY TRAY                    | M120167Y            |  |
| 10   | BATTERY STRAP                   | M130032             |  |
| 11   | SOLENOID CONTACTOR RETROFIT KIT | M140149             |  |
| 12   | SOLENOID CONTACTOR              | FA976               |  |
| 13   | CONTACTOR HARNESS EXTENSIONS    | FA7989-7            |  |
| 14   | FUSE 200A                       | FA7958-6            |  |
| 15   | FUSE HOLDER                     | FA7958-50           | *NOT NEEDED IF FUSE MOUNTED BETWEEN CONTACTORS |
| 16   | PRESSURE TRANSDUCER             | FA866               | *FLEX AND FLEX MAX ONLY                        |
| 17   | 90 DEGREE FITTING               | M130235             |  |

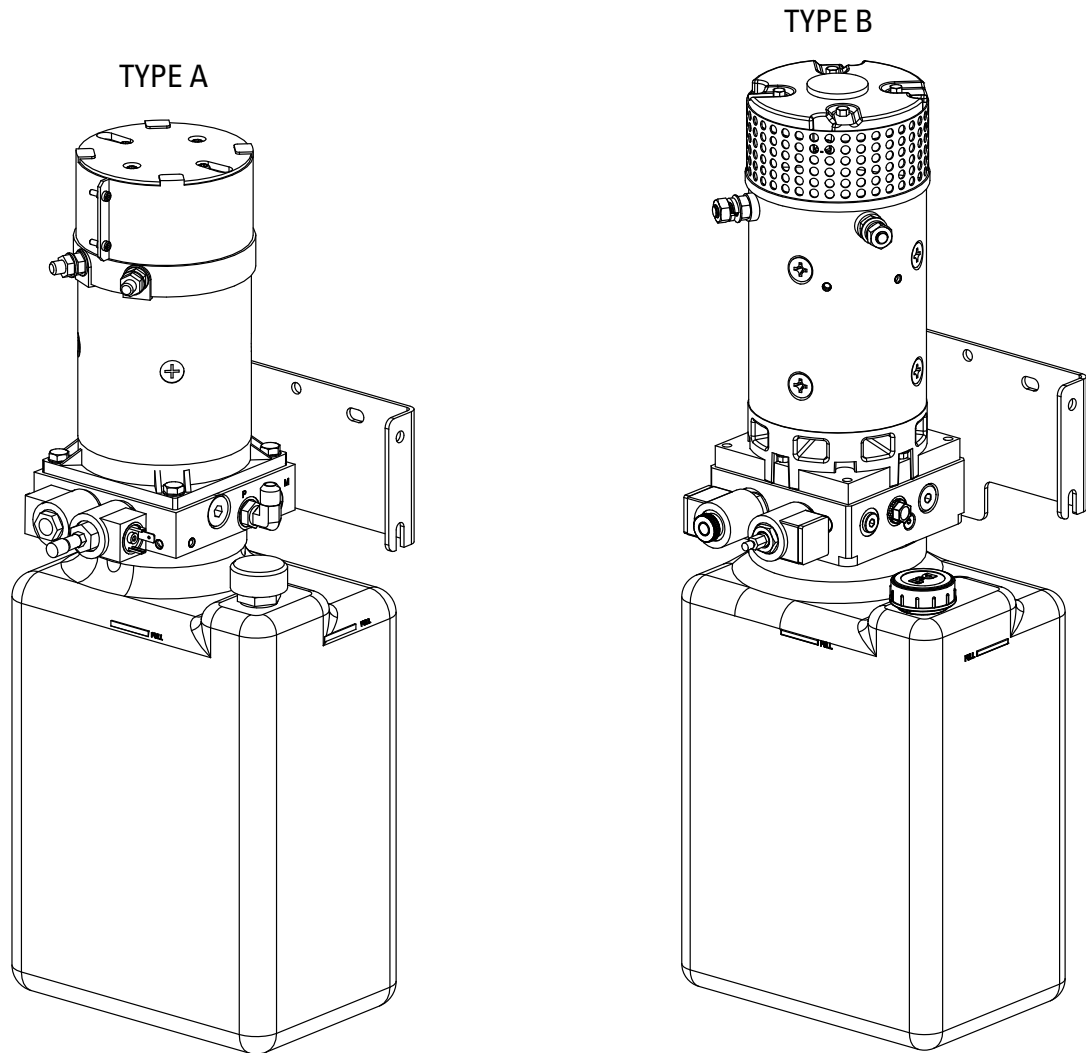
# DC Column



Notes:

## DC Power Unit

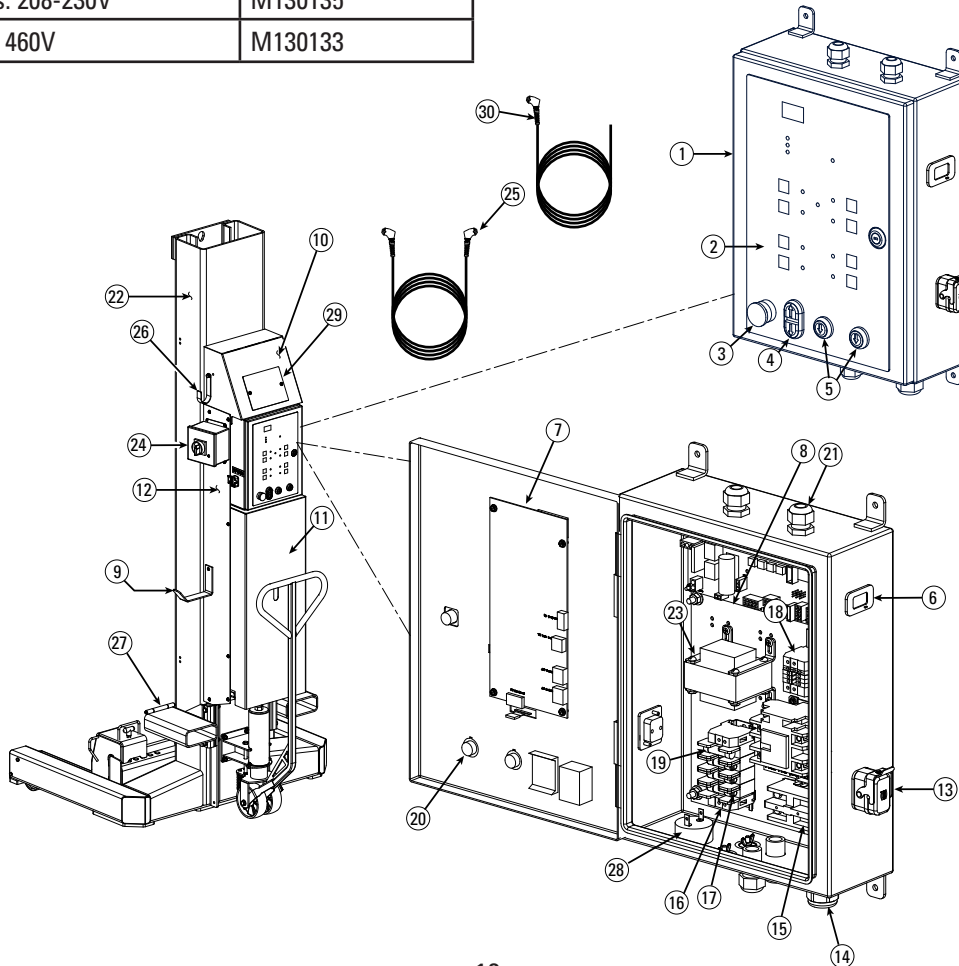
| Item |  | TYPE A   | TYPE B   |
|------|--|----------|----------|
| 1    | POWER UNIT FULL ASSEMBLY                   | 13/14k   | P3693    |
|      |  | 18/19k   | P3692    |
|      |  | 20k      | P3689    |
| 2    | Tank 10L                                   | P3580-19 | P3694-1  |
| 3    | CAP  | P3580-21 | P3610-7  |
| 4    | COIL 24VDC                                 | P3570-14 |          |
| 5    | SOLENOID VALVE (FAST)                      | P3580-8  | P3694-10 |
| 6    | SOLENOID VALVE WITH MANUAL LOWERING (SLOW) | P3580-7  | P3694-7  |
| 7    | GRIP                                       |          | P3694-12 |



## AC Controls / Cabinet

| Item | Description                      | Part No.      |
|------|----------------------------------|---------------|
| 1    | Control Panel Assembly           | FA7959-50/-51 |
| 2    | Membrane Touchpad                | FA7964        |
| 3    | E-Stop Actuator                  | FA7962        |
| 4    | Dual Push Button & Switch Assy   | FA8138        |
| 5    | Single Push Button & Switch Assy | FA8139        |
| 6    | Hour Meter                       | FA7959-53     |
| 7    | UI Board                         | FA7963        |
| 8    | Control Board                    | M140018       |
| 9    | Cord Hook                        | M120303       |
| 10   | Upper Cover Weldment             | M120293       |
| 11   | Cover Weldment                   | M120298       |
| 12   | Side Panel Weldment, Left        | M120291       |
|      | Side Panel Weldment, Right       | M120296       |
| 13   | Panel Connector                  | FA7959-10     |
| 14   | Cord Grip                        | MC130118      |
| 15   | Contactora 20 FLA                | M130160       |
| 16   | Fuse Holder (Bussman TCFH30)     | FA7969        |
|      | Fuse Holder (Bussman NDNF1)      | FA7971        |
| 17   | Fuse                             |               |
|      | TCF-10 Amps. 208-230V            | FA7970-1      |
|      | TCF-6 Amps. 460V                 | FA7970-2      |
|      | LPCC-10 Amps. 208-230V           | M130135       |
|      | LPCC-6 Amps. 460V                | M130133       |

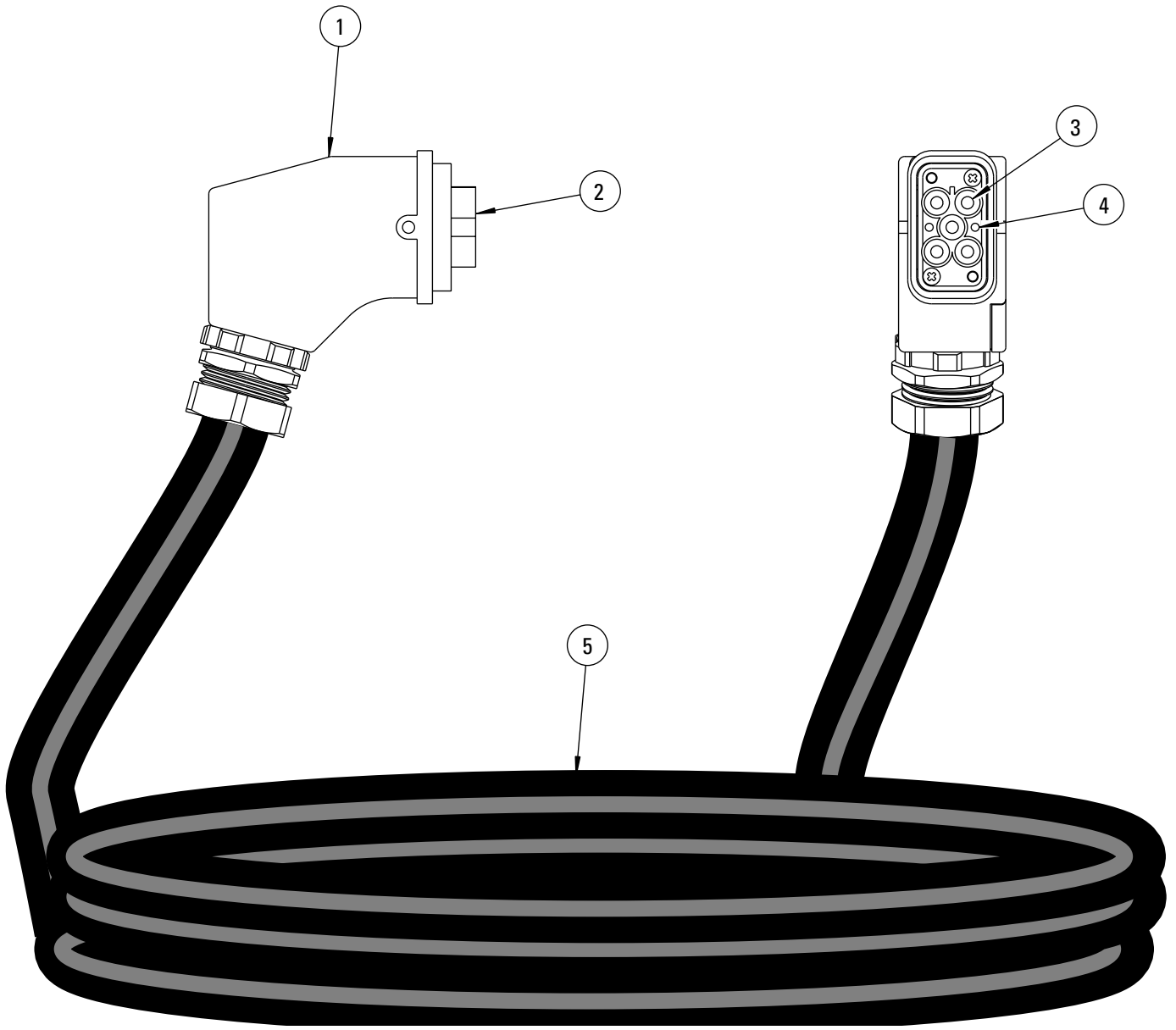
|    |                                      |           |
|----|--------------------------------------|-----------|
| 18 | Terminal Block                       | MC130016  |
| 19 | Fuse                                 |           |
|    | 0.8 Amps. 460V                       | FA7967    |
|    | 1.5 Amps. 208-230V                   | FA7972    |
| 20 | Contact Block, N. O. "Moeller"       | M130091   |
| 21 | Cord Grip                            | MC130037  |
| 22 | Column Sub Assembly Adjustable Forks | M110085   |
|    | Column Sub Assembly Fixed Forks      | M110071   |
| 23 | Transformer                          | FA8135    |
|    | Transformer (75 VA)                  | FA7653    |
| 24 | Power Box                            | M130187   |
| 25 | Interconnect Harness 4'              | FA7966-4  |
|    | Interconnect Harness 70'             | FA7966-70 |
| 26 | Cord Hanger                          | M120262   |
| 27 | Fork Lift Bracket                    | M120235   |
| 28 | Audible Signal Device                | FA7974    |
| 29 | Latch Cover                          | M120307   |
| 30 | 70' Power Cord                       | M130189   |





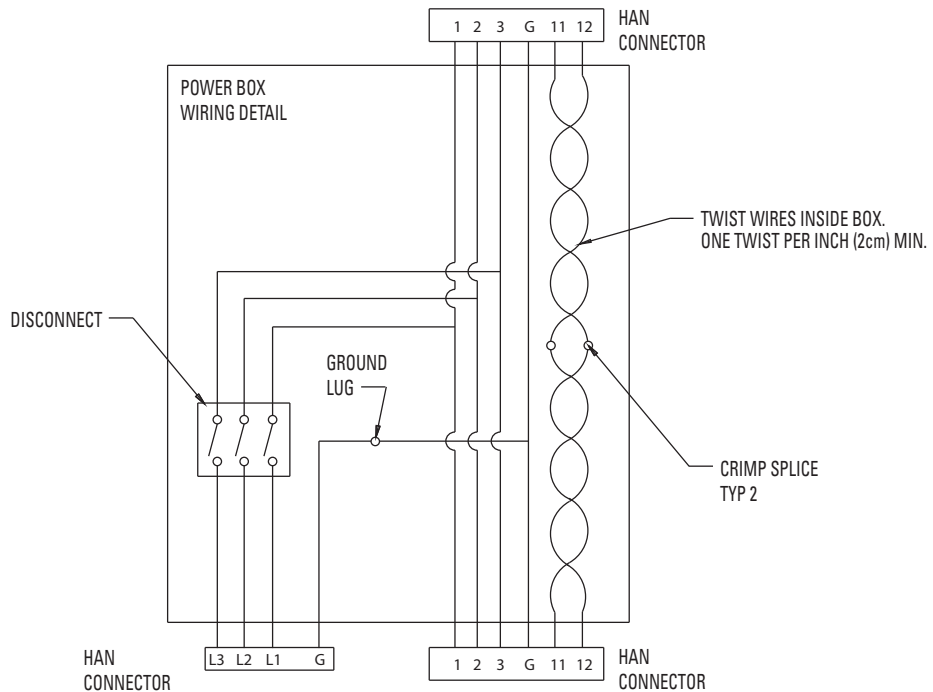
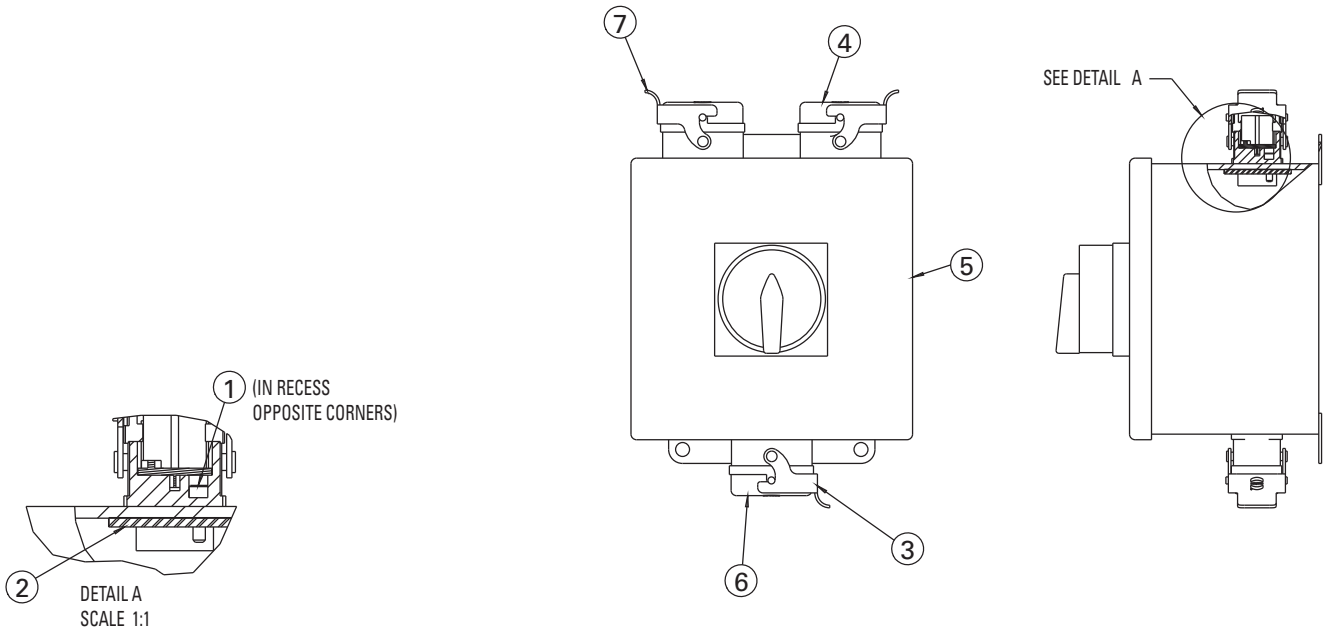
## AC Controls

| Interconnect Harness Detail |                     |          |
|-----------------------------|---------------------|----------|
| Item                        | Description         | Part No. |
| 1                           | Metal Hood Housing  | M130124  |
| 2                           | Male Crimp Terminal | M130125  |
| 3                           | Male Power Contact  | M130126  |
| 4                           | Male Signal Contact | M130127  |
| 5                           | Cord                | M130120  |

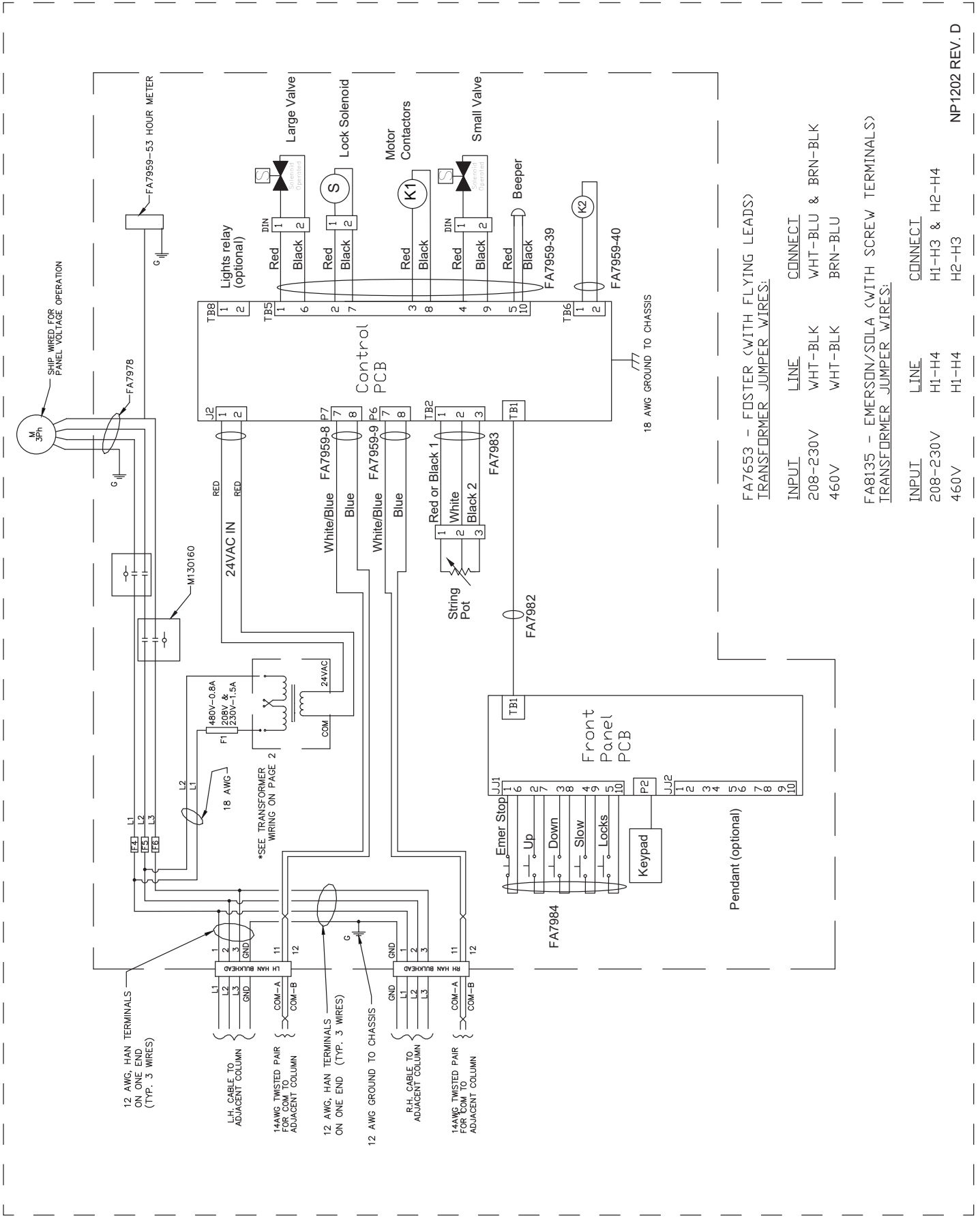


# AC Controls

|      |     |          |   |
|------|-----|----------|---|
| 7    | 2   | M130195  | PANEL BULKHEAD CONN. ASS'Y, 10 Ga. WIRE |
| 6    | 1   | M130188  | PROTECTION COVER, MALE                  |
| 5    | 1   | M130186  | POWER BOX w/DISCONNECT                  |
| 4    | 2   | M130084  | PROTECTION COVER                        |
| 3    | 1   | FA7989   | PANEL BULKHEAD CONNECT ASS'Y., MALE     |
| 2    | 3   | FA7985-1 | PANEL TAP PLATE                         |
| 1    | 6   | 40053    | #6-32NC x 1/2" Lg. HEX SHCS             |
| ITEM | QTY | PART NO. | DESCRIPTION                             |



# AC Schematic



FA7653 - FOSTER (WITH FLYING LEADS)  
TRANSFORMER JUMPER WIRES:

| INPUT    | LINE    | CONNECT           |
|----------|---------|-------------------|
| 208-230V | WHT-BLK | WHT-BLU & BRN-BLK |
| 460V     | WHT-BLK | BRN-BLU           |

FA8135 - EMERSON/SOLA (WITH SCREW TERMINALS)  
TRANSFORMER JUMPER WIRES:

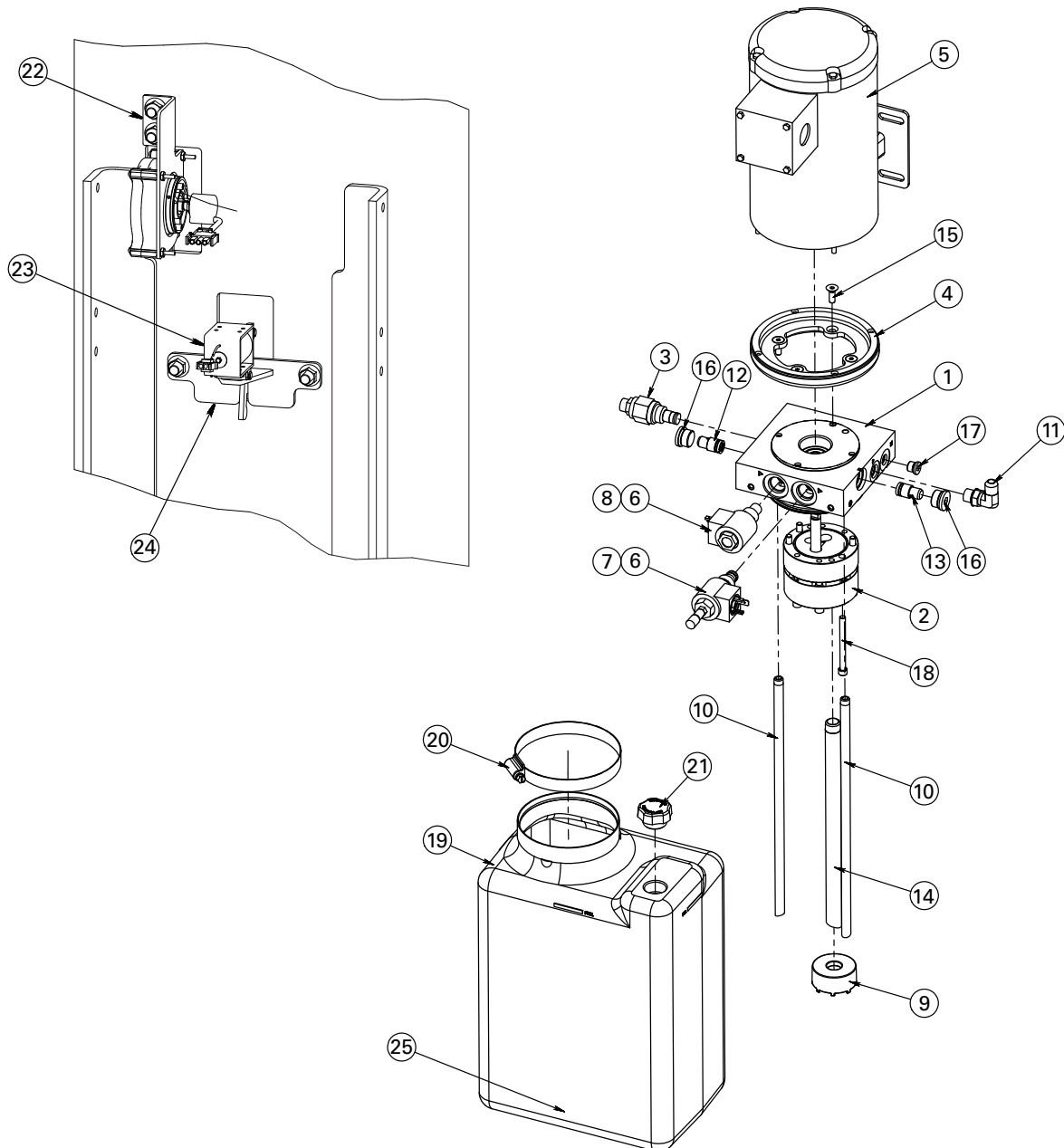
| INPUT    | LINE  | CONNECT       |
|----------|-------|---------------|
| 208-230V | H1-H4 | H1-H3 & H2-H4 |
| 460V     | H1-H4 | H2-H3         |

Notes:

## AC Power Unit and Inside Cabinet

| Item | Description      | Part No.  |
|------|------------------|-----------|
| 1    | Base Assy.       | P-3580-1  |
| 2    | P Assy.          | P-3580-2  |
| 3    | Valve, Relief,   | P-3580-3  |
| 4    | Adapter,         | P-3580-4  |
| 5    | Motor, AC, 2.5HP | P-3580-5  |
| 6    | Coil, 24VCD      | P3570-14  |
| 7    | Cartridge        | P-3580-7  |
| 8    | Cartridge        | P-3580-8  |
| 9    | Filter Assy.     | P3570-8   |
| 10   | Tube, RTN        | P-3580-10 |
| 11   | Fitting, Elbow   | P3570-22  |
| 12   | Poppet Assy.     | P3570-24  |

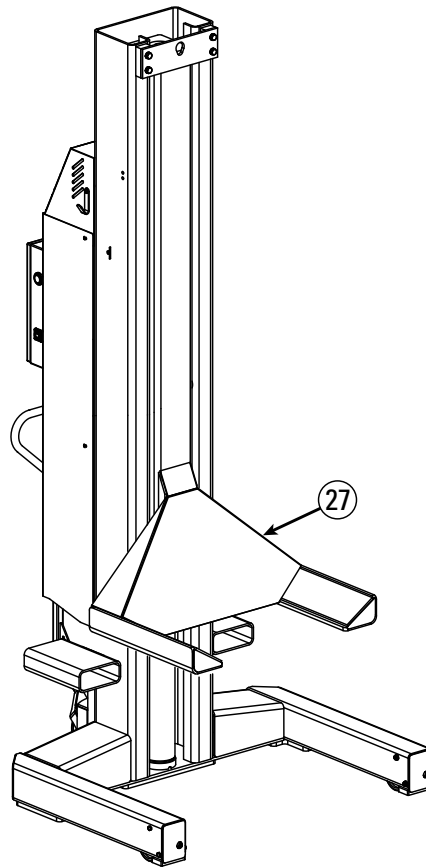
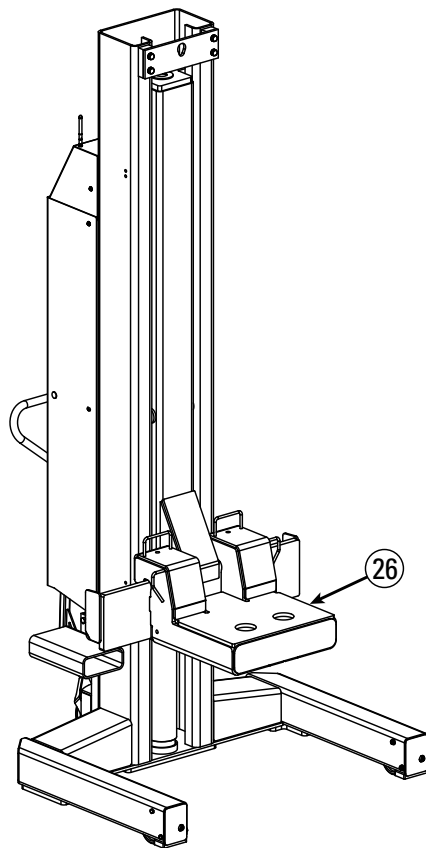
|    |   |                |
|----|---|----------------|
| 13 | Poppet Assy.                            | P3570-23       |
| 14 | Tube, Suct,                             | P-3580-14      |
| 15 | Screw. F., HD., SOC., CAP, 1/4-20 x 3/4 | P-3580-15      |
| 16 | Plug, SAE, O-Ring, 3/4-16, HEX SOC      | P3570-25       |
| 17 | Plug, SAE, O-Ring, 7/16-20, HEX SOC     | P3570-26       |
| 18 | Screw, SHC, 1/4-20 x 2.75, BLK OX       | P-3580-18      |
| 19 | Poly Reservoir                          | P-3580-19      |
| 20 | Clamp, Hose, Worm Gear                  | P-3580-20      |
| 21 | Plug, Resev, Breather-Filler            | P-3580-21      |
| 22 | String Pot Assembly                     | M110187<br>Kit |
| 23 | Solenoid                                | M130017        |
| 24 | Latch Assembly Bracket                  | M120067Y       |
| 25 | Magnet, Drop In                         | P3576-5        |



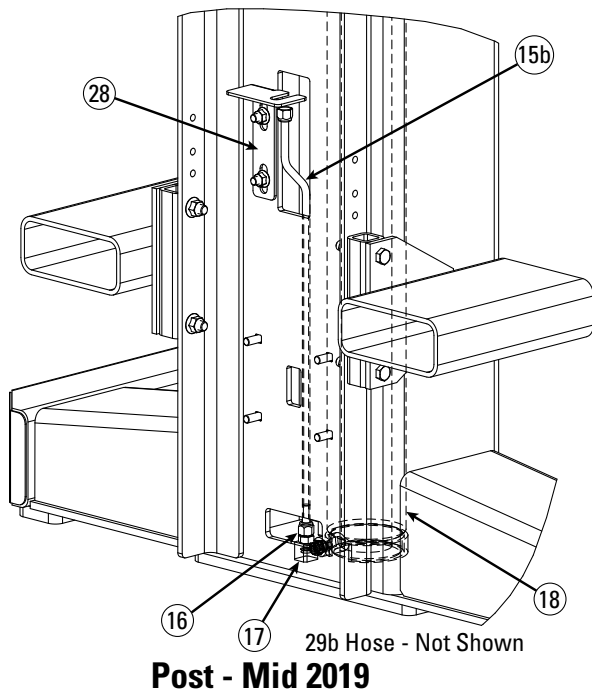
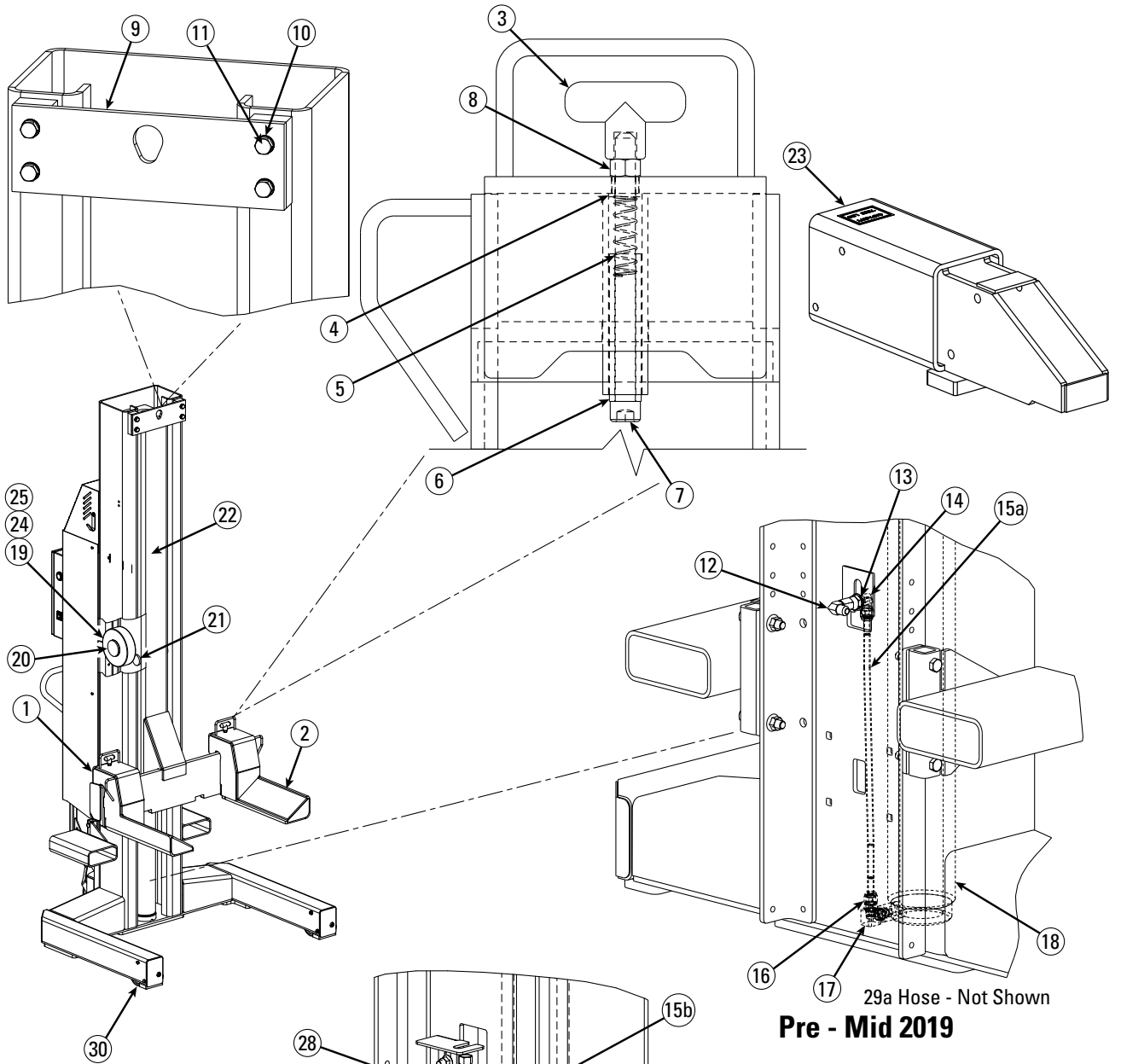
## 18-20K Structural

| Item | Description                                | Part No. |
|------|--|----------|
| 1    | RH Fork Assembly                           | M110011  |
|      | RH Fork Assembly NYC (Long)                | M110053  |
|      | RH Fork Assembly NYC (Short)               | M110130  |
| 2    | LH Fork Assembly                           | M110010  |
|      | LH Fork Assembly NYC (Long)                | M110052  |
|      | LH Fork Assembly NYC (Short)               | M110129  |
| 3    | Fork Pin Handle                            | M130013Y |
| 4    | Fork Pin Bushing                           | M130015Y |
| 5    | Fork Pin Spring                            | M120136Y |
| 6    | Bolt Collar                                | M120135Y |
| 7    | 3/8"-16NC x 5" Lg. Hex SHCS, PLTD          | 40389    |
| 8    | 3/8"-16NC Hex Nut, PLTD Grade 5            | 40659    |
| 9    | Tie Bar                                    | M120045Y |
| 10   | M12 Lock Washer                            | 41595    |
| 11   | M12 x 1.75 x 30mm Lg. HHCS Grade 8.8, PLTD | 41684    |
| 12   | Swivel Nut Elbow #6                        | M130028  |
| 13   | 9/16" Internal Tooth Lock Washer, PLTD     | 40998    |

|     |                                 |           |
|-----|---------------------------------|-----------|
| 14  | Bulkhead Union Elbow #6         | T140138   |
| 15a | Cylinder Hydraulic Tube         | M130009   |
| 15b | Cylinder Hydraulic Tube         | M130247   |
| 16  | Adapter                         | FJ7352-3  |
| 17  | Velocity Fuse                   | M130016   |
| 18  | Hydraulic Cylinder              | M130001Y  |
|     | Cylinder Seal Kit               | M130130   |
| 19  | Roller                          | M130002Y  |
| 20  | Carriage Slider                 | M130006Y  |
| 21  | Slider                          | FC5905-4Y |
| 22  | WEMU Carriage Assembly          | M110002Y  |
| 23  | Leg Extension                   | M120309   |
| 24  | Shim .030"                      | M120286   |
| 25  | Shim .060"                      | M120190   |
| 26  | 20k Rail Lift Platform          | M110167   |
| 27  | Wemu Fixed Fork Carriage Assy   | M11049Y   |
| 28  | Hose Bulkhead Bracket           | M120653   |
| 29a | PU Hose Assembly (Not Shown) DC | M130029   |
|     | PU Hose Assembly (Not Shown) AC | M130243   |
| 29b | PU Hose Assembly (Not Shown) DC | M130245   |
|     | PU Hose Assembly (Not Shown) AC | M130246   |
| 30  | Front Wheel Assembly            | M110015Y  |



# 18-20K Structural



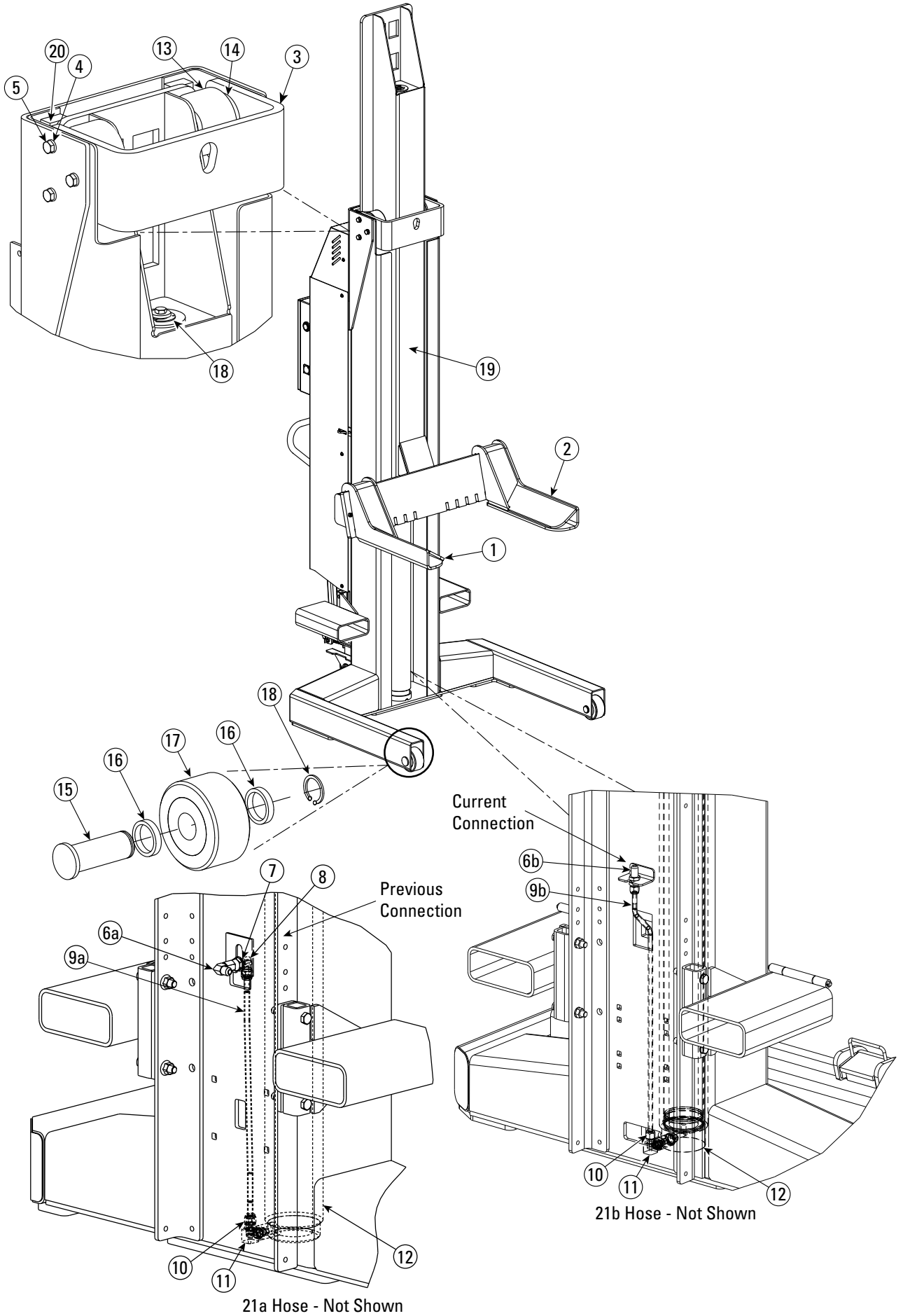
### 13-14K Structural

| Item | Description                                   | Part No. |
|------|---|----------|
| 1    | RH Fork Weldment                              | M120668  |
| 2    | LH Fork Weldment                              | M120667  |
| 3    | Roller Support Weldment                       | D13100Y  |
| 4    | M12 Lock Washer                               | 41595    |
| 5    | M12 x 1.75 x 30mm Lg. HHCS<br>Grade 8.8, PLTD | 41684    |
| 6a   | Swivel Nut Elbow #6                           | M130028  |
| 6b   |   | T140132  |
| 7    | 9/16" Internal Tooth Lock Washer,<br>PLTD     | 40998    |
| 8    | Bulkhead Union Elbow #6                       | T140138  |
| 9a   | Cylinder Hydraulic Tube                       | M130009  |
| 9b   |   | M130227  |

|     |                              |           |
|-----|------------------------------|-----------|
| 10  | Adapter                      | FJ7352-3  |
| 11  | Velocity Fuse                | M130016   |
| 12  | Hydraulic Cylinder           | M130001Y  |
|     | Cylinder Seal Kit            | M130130   |
| 13  | Roller                       | D12201Y   |
| 14  | Slider                       | FC5905-4Y |
| 15  | Leg Wheel Axle               | D10001Y   |
| 16  | Spacer Tube                  | D10002Y   |
| 17  | Leg Wheel Assembly           | D10010Y   |
| 18  | Clip Ring                    | B60-30    |
| 19  | Carriage Assembly            | M110114Y  |
| 20  | Column Thrust Bearing        | D15001Y   |
| 21a | PU Hose Assembly (Not Shown) | M130029   |
| 21b | PU Hose Assembly (Not Shown) | M130226   |

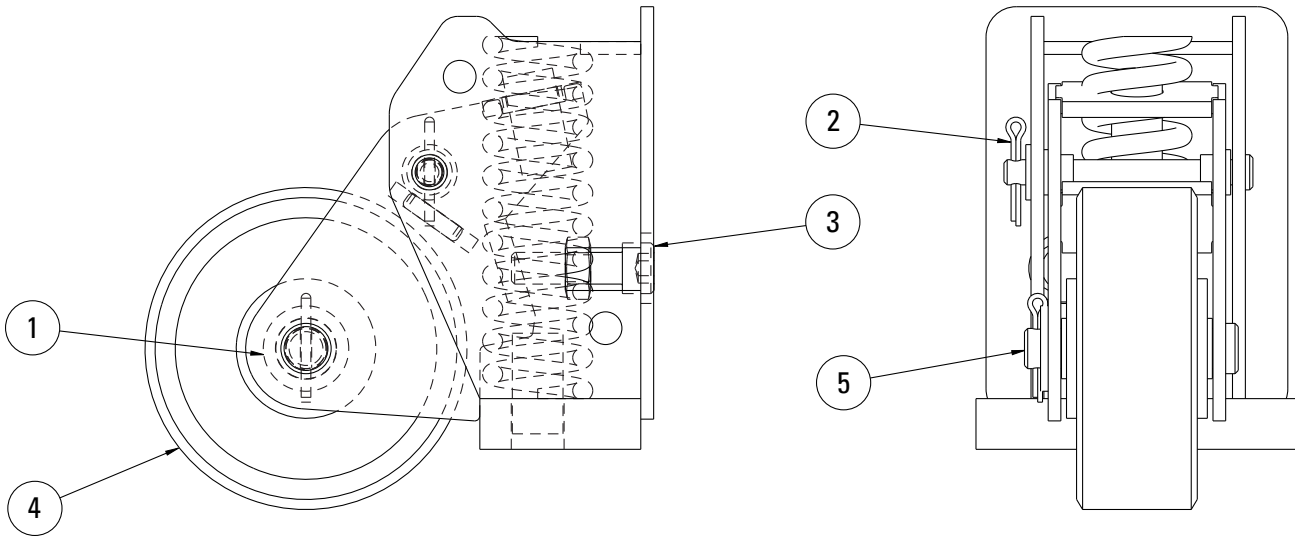


# 13-14K Structural



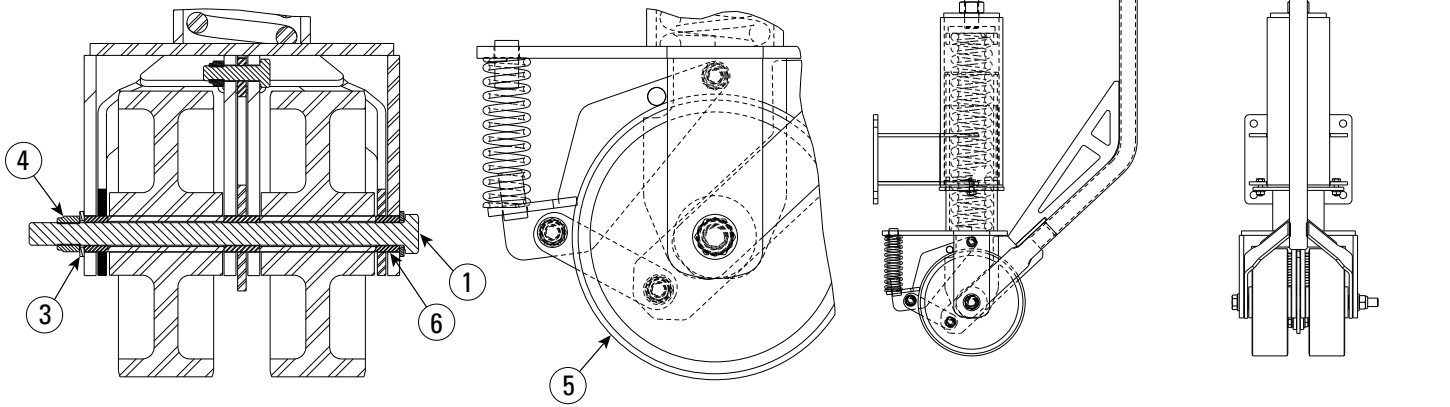
## 18-20K Structural Front Wheel Assembly

| Item | Description  | Part No. |
|------|--|----------|
| 1    | 1/2" SAE Flat Washer                                 | 40920    |
| 2    | 1/8" x 1" Lg. Cotter Pin                             | 41200    |
| 3    | M10 x 1.5 x 35mm Nylon Locking<br>SOC. HD. CS., PLTD | 41512    |
| 4    | Leg Wheel  | M120149Y |
| 5    | Floor Roller Shaft                                   | M120150Y |



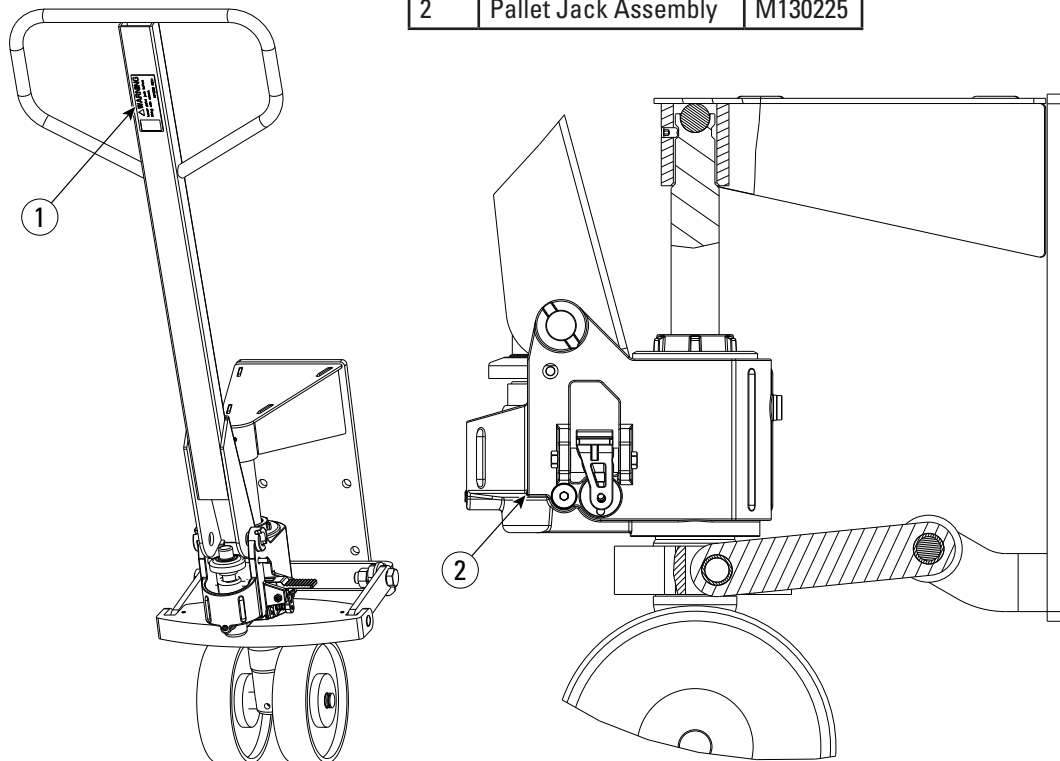
## M110005Y Caster Assembly

| Item | Description  | Part No. |
|------|--|----------|
| 1    | M12 x 1.75 x 200mm Lg. HHCS<br>Grade 8.8, PLTD       | 41483    |
| 2    | M20 x 2.5 x 60mm HHCS Full<br>Thread Grade 8.8, PLTD | M130129  |
| 3    | M12 Flat Washer                                      | 41520    |
| 4    | M12 x 1.75 Hex Nylon Insert Lock<br>Nut PLTD         | 41568    |
| 5    | Caster Wheel   | M130011  |
| 6    | Outer Handle Bearing                                 | M130026Y |

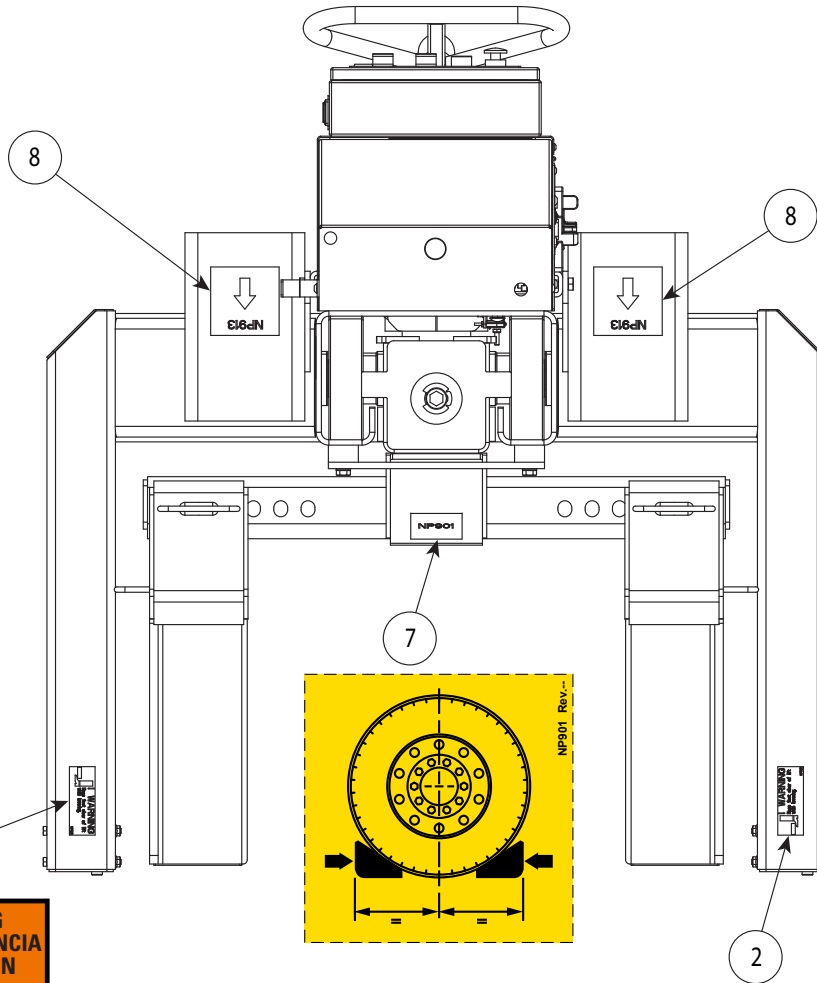
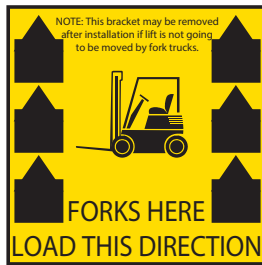


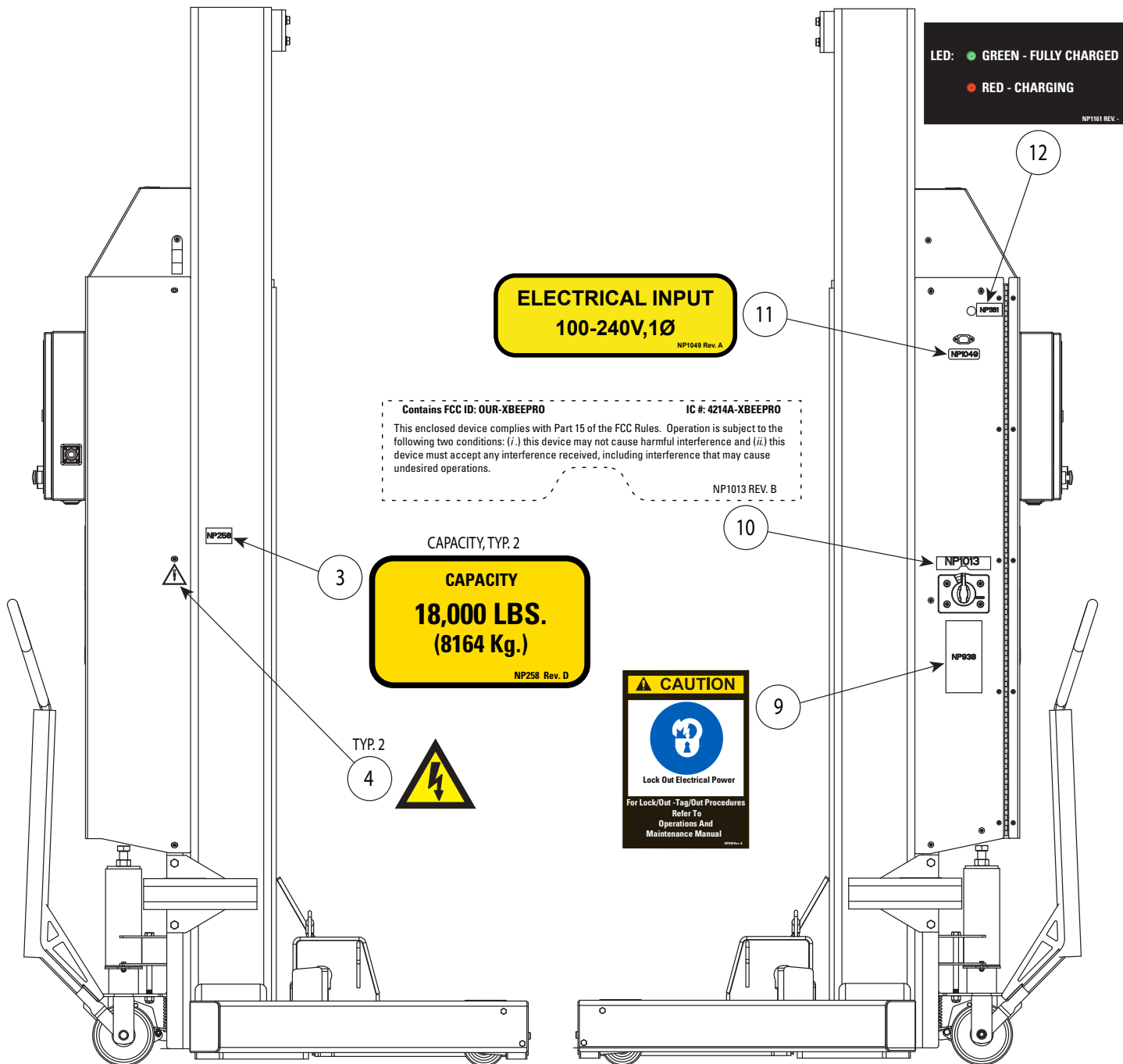
## M110281 Pallet Jack Assembly

| Item | Description          | Part No. |
|------|----------------------|----------|
| 1    | Nameplate            | NP1336   |
| 2    | Pallet Jack Assembly | M130225  |



| ITEM | QTY | PART NO. | DESCRIPTION                                  |
|------|-----|----------|--|
| 1    | 1   | 14606    | LABEL KIT, ALI/WL400S ALI/WL400C, ALI/WL400W |
| 2    | 2   | NP253    | NAMEPLATE - KEEP FEET CLEAR                  |
| 3    | 2   | NP258    | NAMEPLATE                                    |
| 4    | 2   | NP584    | HIGH VOLTAGE NAMEPLATE                       |
| 5    | 1   | NP865    | ETL ACCESSORY LABEL                          |
| 6    | 1   | NP900    | OPERATING HAZARDS LABEL                      |
| 7    | 1   | NP901    | EQUAL FORK DISTANCE LABEL                    |
| 8    | 2   | NP913    | FORKLIFT BRACKET LABEL                       |
| 9    | 1   | NP938    | LOCK OUT, TAG OUT NAMEPLATE                  |
| 10   | 1   | NP1013   | NAMEPLATE                                    |
| 11   | 1   | NP1049   | NAMEPLATE                                    |
| 12   | 1   | NP1161   | NAMEPLATE                                    |
| 13   | 1   | NP1254   | NAMEPLATE                                    |





**ELECTRICAL INPUT**  
 100-240V, 1Ø  
NP1049 Rev. A

**Contains FCC ID: 0UR-XBEEPRO**      **IC #: 4214A-XBEEPRO**  
 This enclosed device complies with Part 15 of the FCC Rules. Operation is subject to the following two conditions: (i) this device may not cause harmful interference and (ii) this device must accept any interference received, including interference that may cause undesired operations.  
NP1013 REV. B

CAPACITY, TYP. 2  
**CAPACITY**  
**18,000 LBS.**  
**(8164 Kg.)**  
NP258 Rev. D

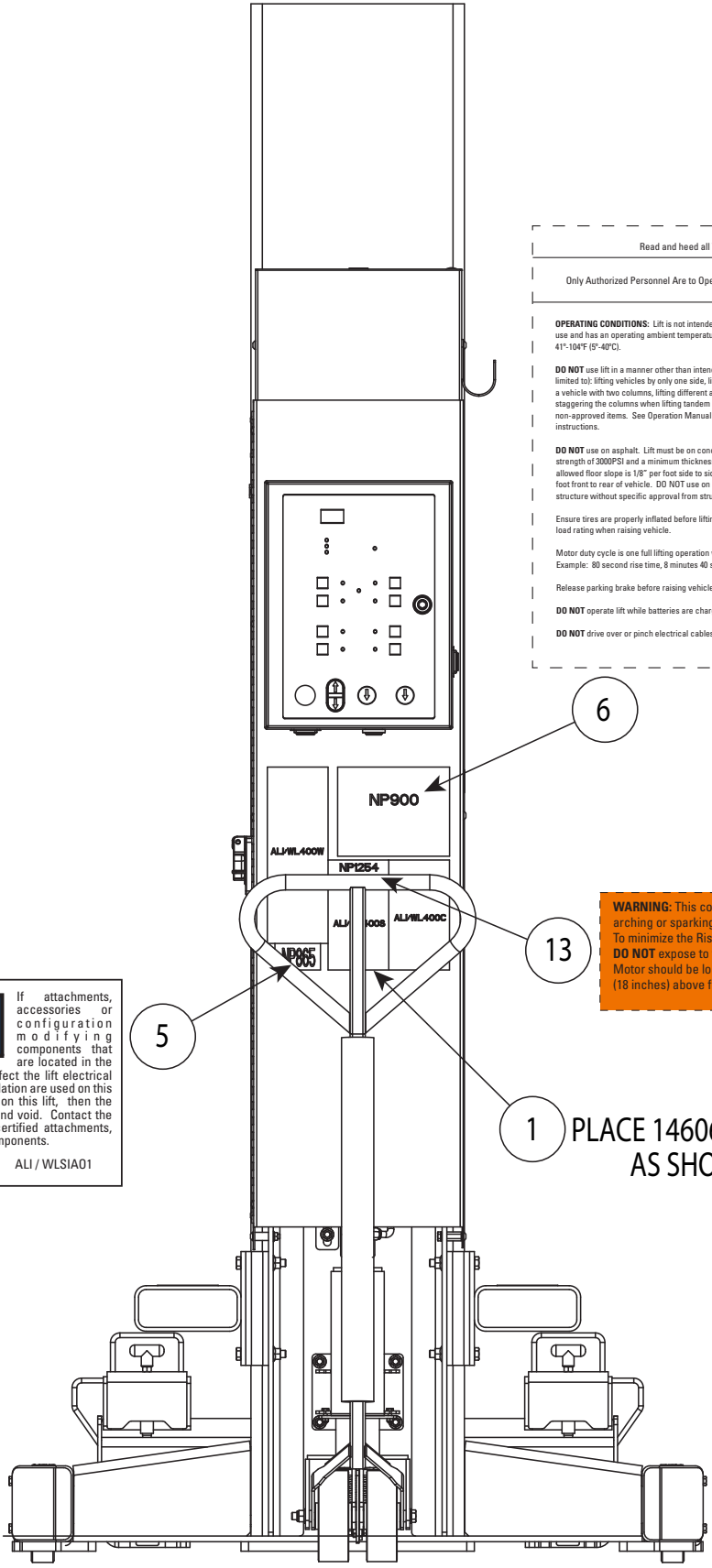
**CAUTION**  
  
**Lock Out Electrical Power**  
 For Lock/Out - Tag/Out Procedures Refer To Operations And Maintenance Manual

**LED:** ● GREEN - FULLY CHARGED  
 ● RED - CHARGING  
NP1101 REV. -

**NOTICE**

If attachments, accessories or configuration modifying components that are located in the load path, affect operation of the lift, affect the lift electrical listing or affect intended vehicle accommodation are used on this lift and, if they are not certified for use on this lift, then the certification of this lift shall become null and void. Contact the participant for information pertaining to certified attachments, accessories or configuration modifying components.

www.autolift.org ©2011 by ALI, Inc. ALI / WLSIA01



**SAFETY INSTRUCTIONS**  
Read and heed all WARNING, CAUTION and SAFETY INSTRUCTION labels on lift.

**OPERATING INSTRUCTIONS**  
Only Authorized Personnel Are to Operate Lift. Before operating lift, read Operation & Maintenance Manual and Safety documents supplied with lift.

**OPERATING CONDITIONS:** Lift is not intended for outdoor use and has an operating ambient temperature range of 41°-104°F (5°-40°C).

**DO NOT** use lift in a manner other than intended. Included (but not limited to): lifting vehicles by only one side, lifting only a single axle of a vehicle with two columns, lifting different axles with two columns, staggering the columns when lifting tandem axles, and lifting non-approved items. See Operation Manual for more detailed instructions.

**DO NOT** use on asphalt. Lift must be on concrete with a minimum strength of 3000PSI and a minimum thickness of 4.5". Maximum allowed floor slope is 1/8" per foot side to side of vehicle and 1/4" per foot front to rear of vehicle. DO NOT use on a suspended floor structure without specific approval from structural engineer.

Ensure tires are properly inflated before lifting. DO NOT exceed tire load rating when raising vehicle.  
Motor duty cycle is one full lifting operation within a 10 minute period.  
Example: 80 second rise time, 8 minutes 40 second rest.

Release parking brake before raising vehicle.

**DO NOT** operate lift while batteries are charging\*.

**DO NOT** drive over or pinch electrical cables.

System ID (eg S01) displays when the wireless control system is engaged.

**IMPORTANT!** Use a different system ID for each column group in a facility.

| Error Codes and Explanations:        |                             |
|--------------------------------------|-----------------------------|
| E0                                   | CPU Error                   |
| E1                                   | Improper Configuration      |
| E2                                   | Improper Parking            |
| E3                                   | Communication Error         |
| E4                                   | Out Of Level                |
| E5                                   | Emergency Stop              |
| E6                                   | Potentiometer Error         |
| E7                                   | Short Circuit Detected*     |
| E8                                   | Software Mismatch           |
| E9                                   | Stuck Key                   |
| E10                                  | Display Communication Error |
| E11                                  | Low Battery Error*          |
| E12                                  | Weight Sensor Error**       |
| E14                                  | Wireless Radio Error*       |
| E15                                  | Intermittent Power Error*   |
| HL                                   | Height Limit Reached        |
| HD                                   | Height Offset Limit Reached |
| CL                                   | Communication Loss**        |
| EHL                                  | Height Limit Reached        |
| All Other Codes See Operation Manual |                             |

\* Not applicable for all AC mobile columns.  
\*\* Motion stop initiated after 1 second of missed or invalid messages.

NP900 Rev. M

**WARNING:** This column has internal arching or sparking parts. To minimize the Risk Of Explosion, **DO NOT** expose to flammable vapors. Motor should be located at least 460mm (18 inches) above floor.

**Avertissement:** Cette colonne a ou voûte interne suscitant des pièces. Pour minimiser le risque d'Explosion, **NE PAS** exposer à des vapeurs inflammables. Le moteur doit être situé à au moins 460mm (18 pouces) au-dessus de sol.

NP 1254 Rev. V

1 PLACE 14606 KIT AS SHOWN

NP397

**Additional Decals**

NP1032



| NP1032 Rev. B | Electrical Service    | Current Required | "X" Mark Required |
|---------------|-----------------------|------------------|-------------------|
| MCH418        | 208-230V, 3Ph., 60Hz. | 7.1 Per Column   |                   |
| MCH418        | 460V, 3Ph., 60Hz.     | 3.5 Per Column   |                   |
| MCH618        | 208-230V, 3Ph., 60Hz. | 7.1 Per Column   |                   |
| MCH618        | 460V, 3Ph., 60Hz.     | 3.5 Per Column   |                   |

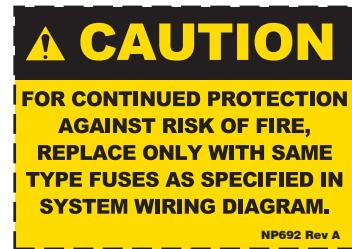
NP919



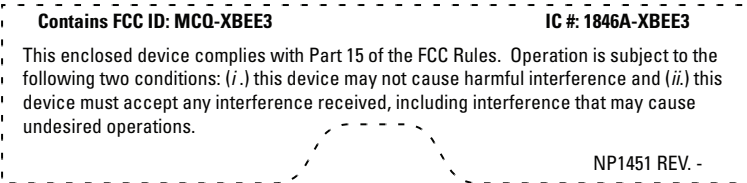
NP220-3



NP692



NP1451



NP1025



NP1026

**WIRELESS OPERATION ONLY**

- Verify the wire/wireless selector switch in each control panel is set to "wireless." (Set by installer)
- Turn on or unlock the column set. When powered up or unlocked, the system number should be displayed on the menu screen (e.g. "S1").
- The system number should be blinking. If not, press the key on the menu pad. The system number should then start blinking.
- Use the and buttons to scroll through the system numbers.
- Press once the desired system number is selected
- You must do this for every column in the set ensuring that all the columns have the same system number selected.
- Once the same system number is chosen, operate the column as normal.
- Choose the position of each column (relative to the vehicle) on each console and press the padlock shaped lock button once to lock all columns that are powered on. The lock indicator button will light. Now that the location is entered and the channel is selected, the lifts are now ready to operate wirelessly.
- Use the buttons as needed to operate the lift.
- When desired lift height is achieved, lower lift to locks using the Button.

**Note:** Columns may be added or subtracted when the system is unlocked. Once locked, no columns can be removed, and no outside columns can be added in or control the locked system. Any column that is set to a system number that is already being used by a locked system will display an "E1" error. Always check the column display before locking. If extra columns appear, press the emergency stop and determine the location of the extra columns. Move them to a different system number before locking the system.
- To break up a set of four, six, or eight into smaller sets:  
Unlock the set (if in use) select a new shared channel for just the columns to be operated. Repeat the process above from step 2 and re-lock the set when set-up is complete.

NP1026 Rev. -

NP1034



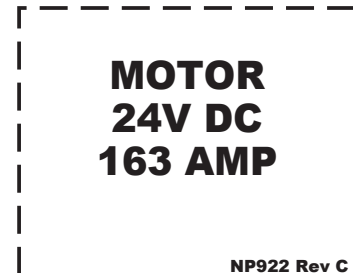
NP1049



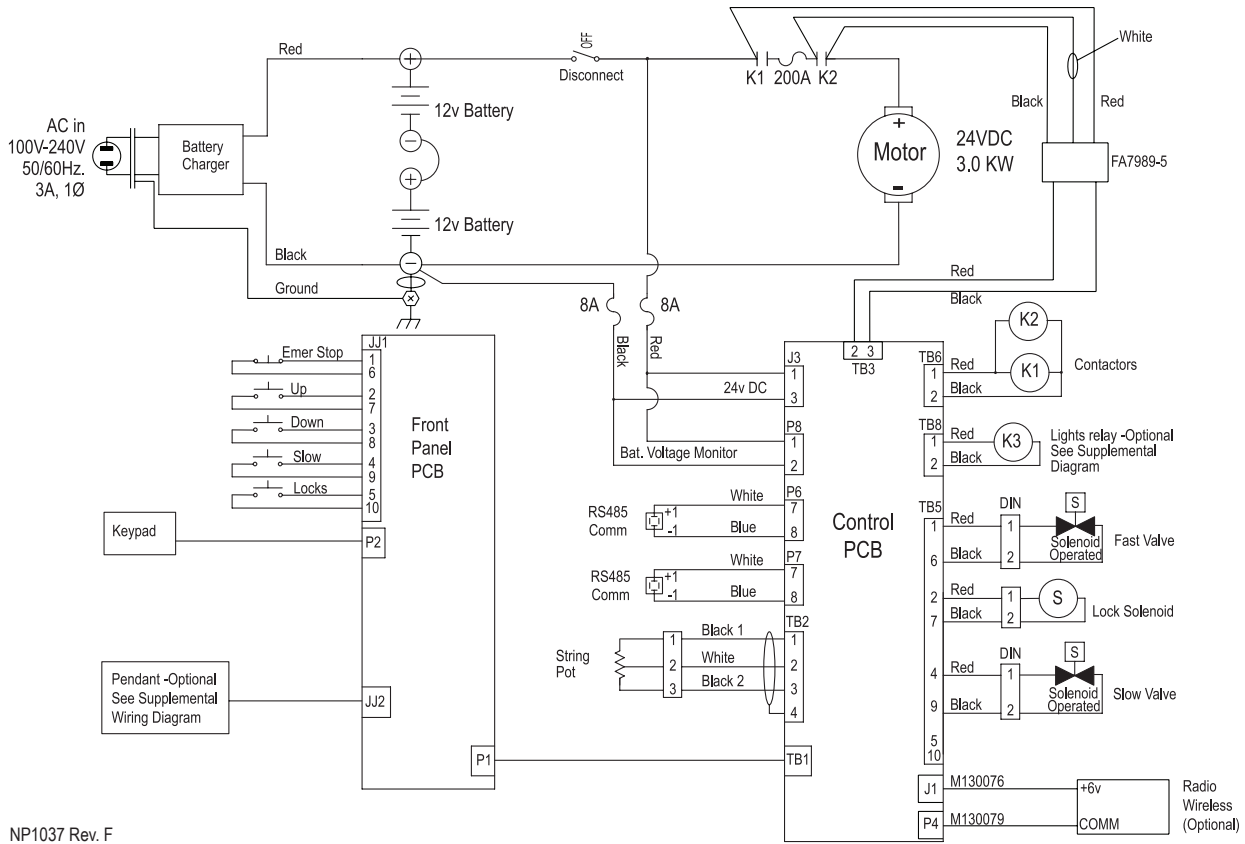
M130140



NP922

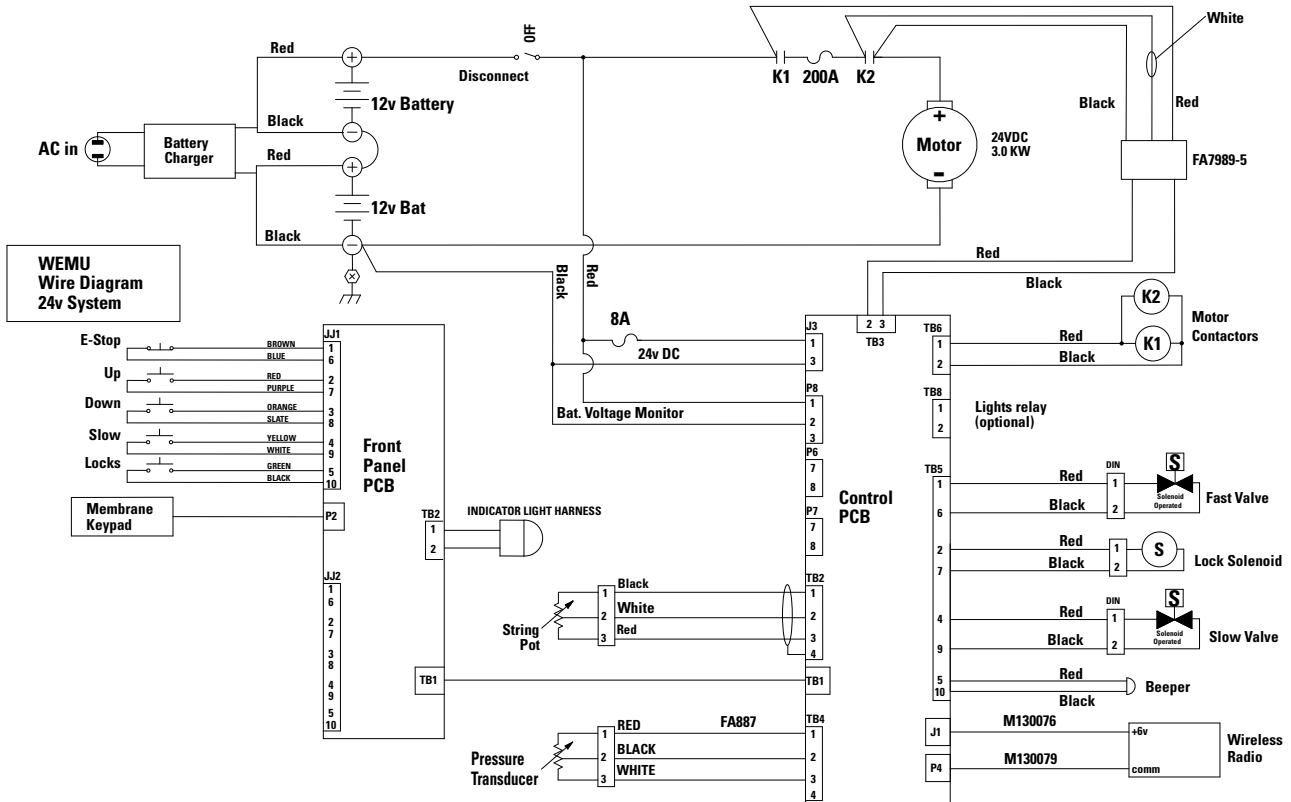


# NP1037



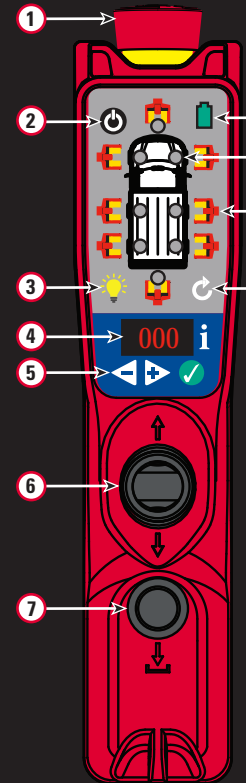
NP1037 Rev. F

# NP1227



NP1227 Rev B






### Quick Start Up Guide

**Initial Set Up:**  
 Power Up The Remote Controller  
 Select System ID  
 Select Number of Columns  
 Position Columns  
 Power Up Each Column  
 System will Auto lock and run as a group

- 1) Emergency Stop Button  
Will Disable Remote Control Communications And Shut The Entire System Down  
Rotate Button To Restart The System Again
- 2) Remote Control Power Button
- 3) Optional Accessory Column Lights On/Off
- 4) Digital Display:  
System ID: All Columns Must Be On The Same System ID As The Remote Controller  
  
**S 3** System ID Example  
  
 Column Count: Lets You Set Up Number Of Columns  
  
**C 4** Column Count Example  
 8 Column Max  
  
**P** "P" Press Protect™ Prevents Accidental Activation Of The Remote Controller  
 Press & Release Any Button To Re-Wake System
- 5) Selection And Enter Buttons Used During Setup
- 6) Joystick:  
Up - Raise  
Partial Down - Slow Lower  
Full Down - Normal Lower
- 7) Lower To Lock:  
Lowers Columns Onto The Locks  
Green Light On Top Of Columns Will Illuminate When Engaged
- 8) Remote Controller Power Indicator
- 9) Column Indicator Light:  
Yellow Flashing - Next Column Position To Add To System  
  
 ● Yellow - Not Active Column  
 ● Green - Active Column  
 ● Red - Column with Error or Height Limit Reached
- 10) Column Buttons - Activate/Deactivate Pair of Columns
- 11) Lock/Unlock The Group Or Refresh/Wake Up The Group

See Operation Instructions Decal For List Of Error Codes

For Setup Video And Other Information:  
<http://www.rotarylif.com/machflex/>



**MACH FLEX**

POWERED BY  
**RedFire™**

NP1236 REV A

ROTARY LIFT



18,800 LB CAPACITY

NP1250


MACH

FLEX

POWERED BY


Red
Fire

NP1253



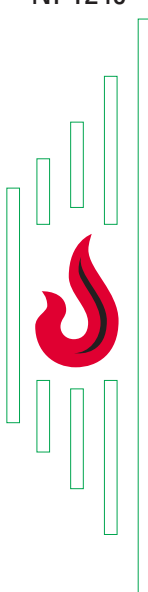
**CAPACITY**  
13,000 LB  
5897 KG

NP1252




**CAPACITY**  
13,000 LB  
5897 KG

NP1249



NP1248



NP1251

MACH FLEX



ROTARY LIFT

MACH FLEX

NP1334



NP1333



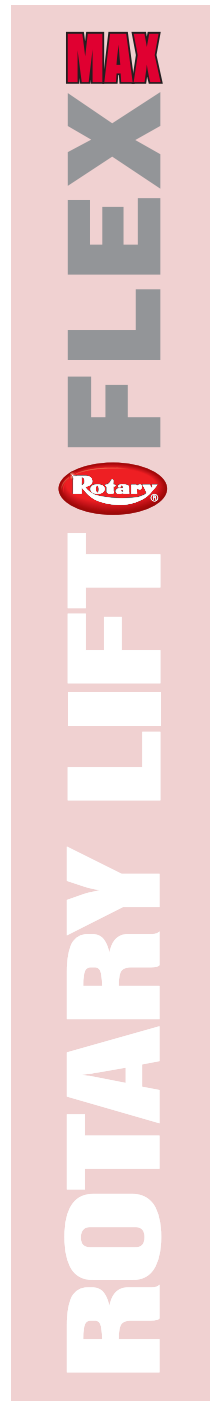
NP1352



14k  
NP1403



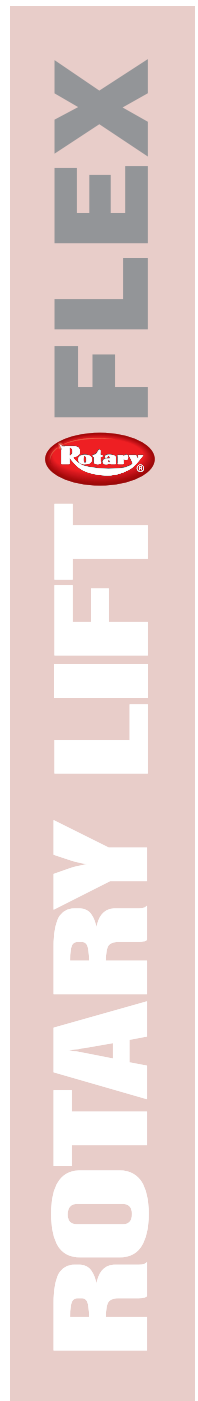
19-20k  
NP1409



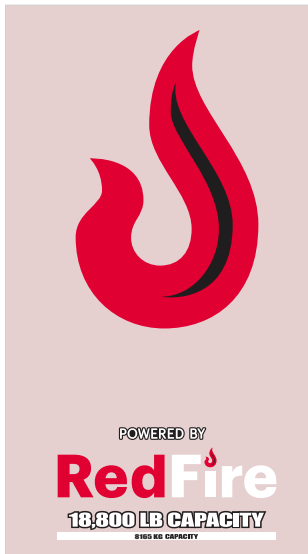
14k  
NP1412



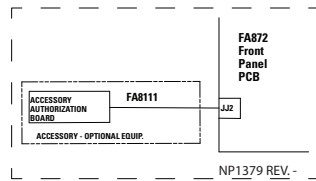
19-20k  
NP1413



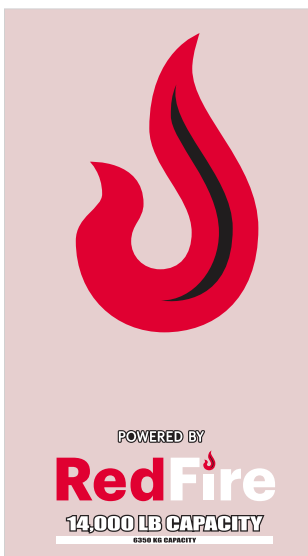
NP1407



NP1379



NP1410



NP1411



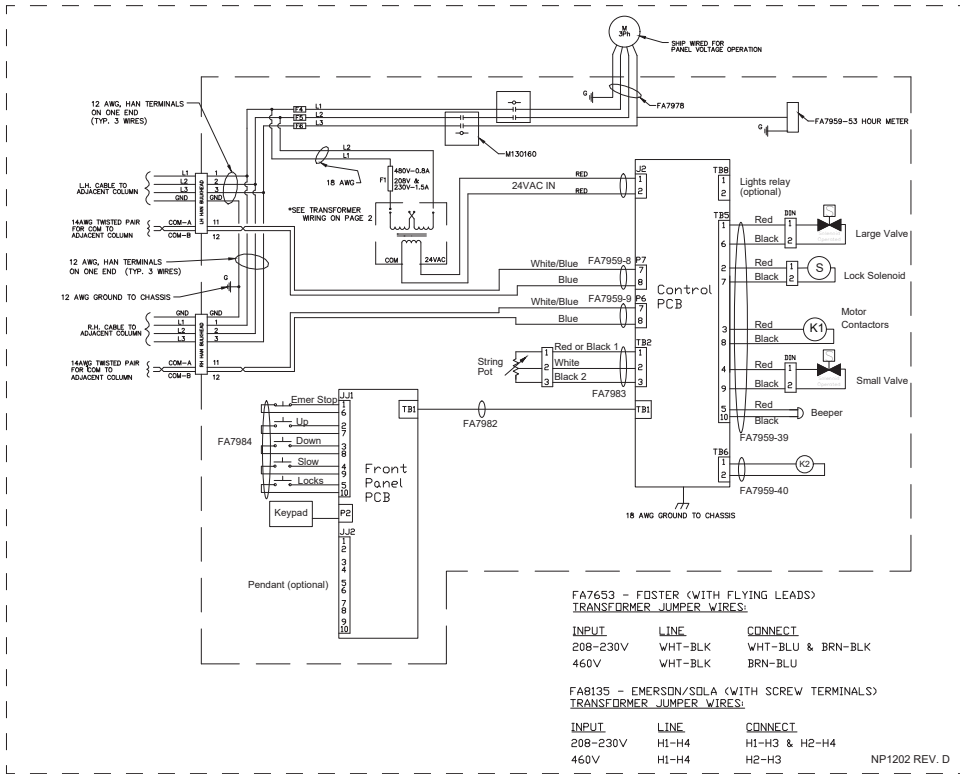
NP1408



NP1414



# NP1202



# NP1074

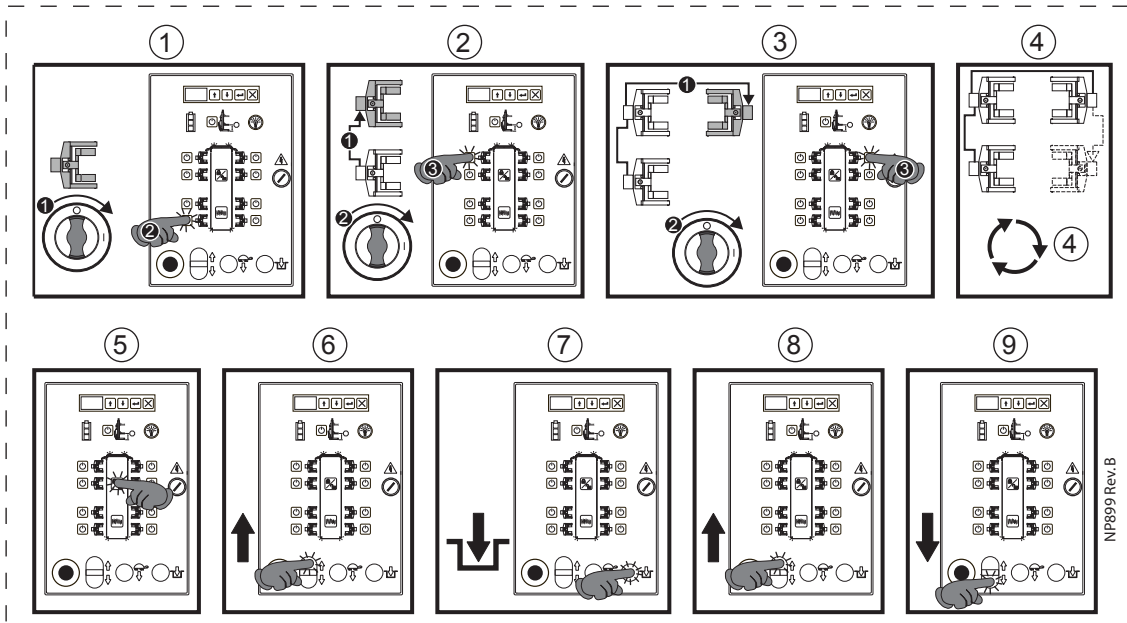
**CAPACITY**  
**13,000 LBS.**  
**(5869 Kg.)**  
 NP1074 REV. A

# NP1101

**CAPACITY**  
**14,500 LBS. (6577 Kg.)**  
**When Yellow Forks**  
**And Extensions**  
**Are Installed**  
 NP1101 Rev. -

# NP789

# NP899



**ROTARY LIFT**

**Installer:** Please return this booklet to literature package, and give to lift owner/operator.

***Thank You***

***Trained Operators and Regular Maintenance Ensures Satisfactory Performance of Your Lift.***

***Contact Your Nearest Authorized Parts Distributor for Genuine Replacement Parts. See Literature Package for Parts Breakdown.***

**Rotary World Headquarters**

2700 Lanier Drive  
Madison, IN 47250, USA  
www.rotarylif.com

**North America Contact Information**

Tech. Support:  
p 800.445.5438  
f 800.578.5438  
e userlink@rotarylif.com  
Sales: p 800.640.5438  
f 800.578.5438  
e userlink@rotarylif.com

**World Wide Contact Information**

World Headquarters/USA: 1.812.273.1622  
Canada: 1.905.812.9920  
European Headquarters/Germany: +49.771.9233.0  
United Kingdom: +44.178.747.7711  
Australasia: +60.3.7660.0285  
Latin America / Caribbean: +54.3488.431.608  
Middle East / Northern Africa: +49.771.9233.0

**© Vehicle Service Group<sup>SM</sup>**

Printed in U.S.A., All Rights Reserved. Unless otherwise indicated, ROTARY, and all other trademarks are property of Dover Corporation and its affiliates.

